

*Bally* MIDWAY  
T.M.

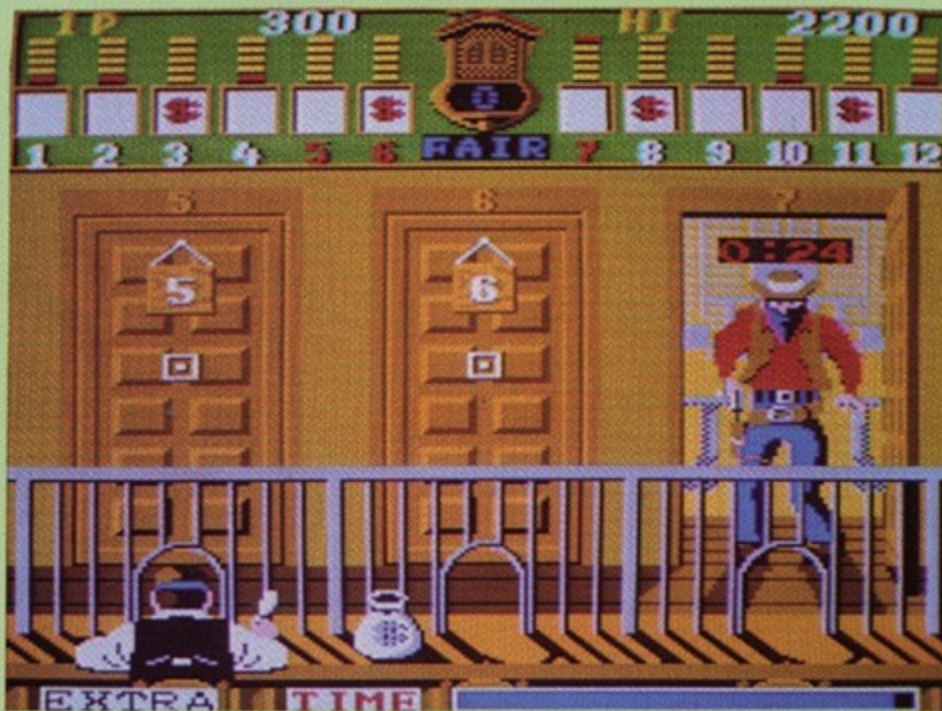
SEGA  
T.M.



**B**ank on action when you lend a helping hand down at the town depository. As deputy of security, your job is to ward off villains and see to it the moneybags are safely stashed. But keep your eyes on the busy entrance doors. Every now and then a gun-toting outlaw just might pop in to make an unauthorized withdrawal. Shoot him before he robs the teller and you'll be rewarded with bonus points. But pull the trigger on a law-abiding customer and you could set off a BANK PANIC!



## OUTWIT THE OUTLAWS BEFORE THEY CAUSE A BANK PANIC!



### GAME FEATURES & CONTROLS:

- 1 & 2 Player Games
- 2-Way Joystick
- Left, Center & Right Fire Buttons

### Earn A Bonanza of Bonus Points!

The tellers at the town bank need help with money matters. Customer traffic is heavy and someone has to keep a watchful eye on the cash flow. Greedy outlaws have been known to mingle with the law-abiding citizens. Your job is to stand behind the teller window and see to it things remain financially secure. Protect the stash from surprise outlaw attacks and you'll be handsomely rewarded with extra points!

### The Door To Success is Often Filled With Danger!

There are 12 doors allowing customers to enter the bank. To make your job easier, red bar graphs at the top of the screen will indicate which door is being approached by potential customers. Only 3 doors are displayed at any one time below the 12 graph indicators. Move your joystick left or right to scan the doors until you reach an area where customers are approaching. But be on the lookout! You won't know for sure whether it's a customer or an outlaw until the door opens!

### The Buck Stops Here!

Once the door swings open, you'll have to think fast on your feet! It may only be a law-abiding citizen who wants to make a deposit. But it could be a nasty outlaw who is dead set on making a speedy withdrawal. In that case, you'll have to wait until *he* makes a move before you make yours!

"BANK PANIC" is engineered and designed by Sega. Manufactured under license by Bally Midway Mfg. Co. TM and © 1985 Sega. © 1985 Bally Midway Mfg. Co.



Height: 69½"  
Width: 27¼"  
Depth: 32¼"

**Bally MIDWAY** MFG. CO.

10601 W. Belmont Avenue  
Franklin Park, Illinois 60131  
Telephone (312) 451-9200

