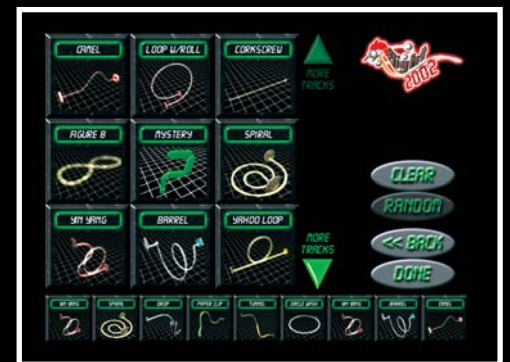
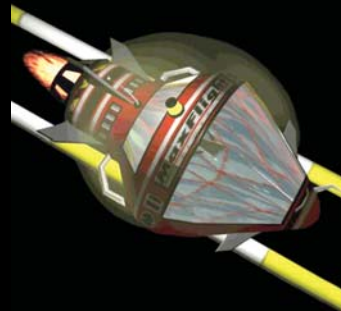


## The Ultimate Rush – Soaring To New Heights

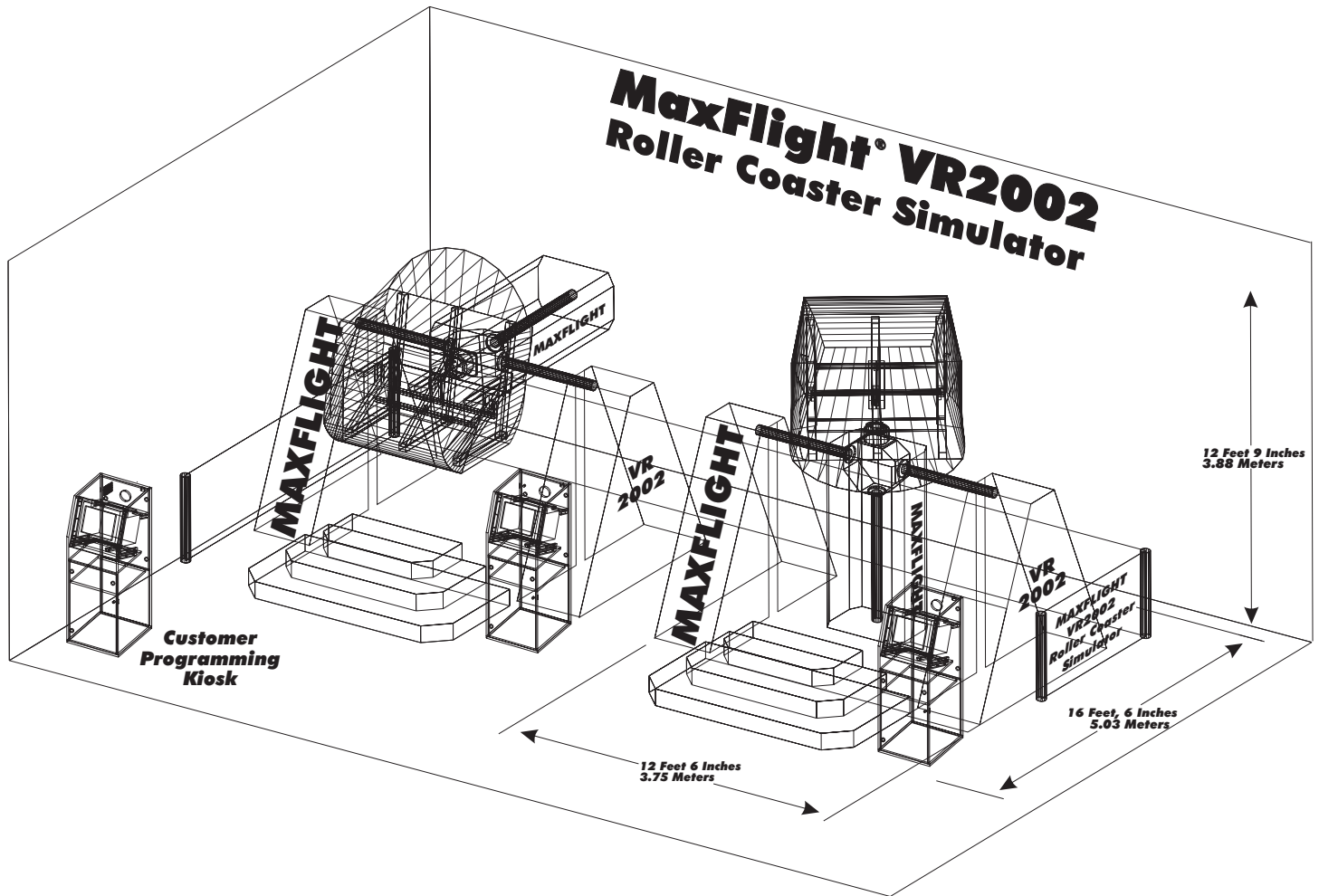
The VR2002 Roller Coaster Simulator, a futuristic Virtual Reality voyage through an awesome space asteroid, has succeeded in a phenomenal fashion worldwide. Riders can program their own journey, selecting track pieces from over 38 billion different "mild to wild" track combinations. Passengers then strap into the big red coaster cab and the full-motion 360 degree "forward-of-axis" action sends them soaring, spiraling, plunging and twisting in two different pulse-pounding directions. Every loop, leap and lunge is seen on the huge "what-you-view-is-what-you-do" 58" screen. Premium-quality surround-sound and the feel of real wind in your face creates a true adrenaline rush.

Customers everywhere are drawn to the VR2002 Roller Coaster's "big attraction" appeal and, like all MaxFlight simulators, operators can count on high throughput, small footprint, solid revenues and excellent return.



visit us online at [www.maxflight.com](http://www.maxflight.com) for more information

MaxFlight Corporation • 1 Executive Drive • Toms River, NJ 08755-4947 • USA • Phone: +1 (732) 281-2007 • Fax: +1 (732) 281-2009 • [sales@maxflight.com](mailto:sales@maxflight.com)



## SPECIFICATIONS

### Game Specifications

|                              |  |
|------------------------------|--|
| Model                        | MaxFlight® VR2002 Roller Coaster Simulator   |
| Description                  | Full 2-axis 360-degree motion base simulator |
| Game Description             | Customer Programmable Roller Coaster system  |
| Total Cycle Time per Play    | Variable                                     |
| Players Per Machine          | Two  |
| Proprietary Hardware         | Yes  |
| Computer Platform            | Intel compatible PC, Microsoft® Windows®     |
| Proprietary Software         | Yes  |
| Display System               | DLP Display                                  |
| Operator Required            | Yes  |
| On-Site Technician Required  | Yes (free factory training available)        |
| Remote Diagnostics / Support | Via modem / internet or phone                |

### Physical/Electrical Specifications

|   |  |
|---|--|
| Height Requirements                             | 12 feet, 9 inches (3.88 meters)  |
| Width   | 12 feet, 6 inches (3.75 meters)  |
| Length (Depth)                                  | 16 feet, 6 inches (5.03 meters)  |
| Floor Area                                      | 206.25 ft <sup>2</sup> (19.16 m <sup>2</sup> )   |
| Contact Feet                                    | (2) 8 inches x 88 inches (20.3 cm x 223.5 cm)  |
| Weight  | 4,000 pounds (1,814.36 kg) approx.   |
| Static Floor Loading                            | 19.39 pounds/ft <sup>2</sup> (94.58 kg/m <sup>2</sup> )  |
| Electrical Requirements (North America)         | (1) 208-volt 3-phase 60 Hz, 30 Amps (dedicated)<br>(2) 110-volt 1-phase 60 Hz, 20 Amps (dedicated) |
| Electrical Requirements (Outside North America) | Available upon request   |
| Shipping Weight                                 | 4,300 pounds (1,950.44 kg)   |

visit us online at [www.maxflight.com](http://www.maxflight.com) for more information

MaxFlight Corporation • 1 Executive Drive • Toms River, NJ 08755-4947 • USA • Phone: +1 (732) 281-2007 • Fax: +1 (732) 281-2009 • [sales@maxflight.com](mailto:sales@maxflight.com)