

SEGA®

# Sand Buggy



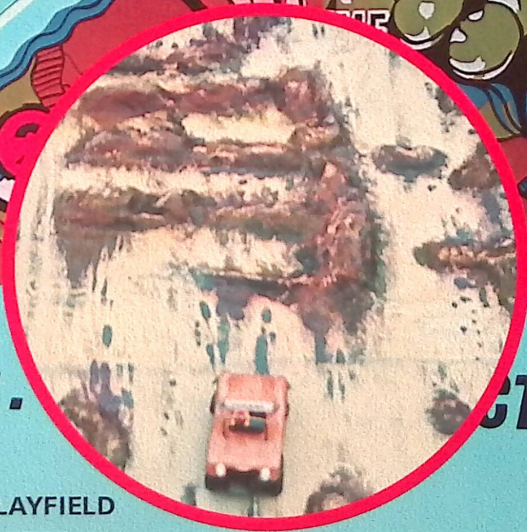
STAND BY

**ACTION - A**

**ACTION -**

**CTION**

PLAYFIELD



4

3

2

1



**SEGA<sup>®</sup>**

# ***SAND BUGGY***

Speed driving of a Sand Buggy over sand dunes and hazards. The object of the game is to cover as much distance as possible in the playing time allowed. Player's scoring is shown on the back glass in Rank reached from 6 to 1. A player reaching 1st rank earns one free game. Only one replay per cash game.



Player controls Sand Buggy speed with foot accelerator.



When player has an accident, player's car lifts and holds for three seconds.



Playfield consists of a three dimensional panoramic sand dune driving area, on an endless belt.



Sand Buggy has a two sound synchronized sound system, plus optional background music, consisting of a tape deck player.



Game Time: 50 cycle area 72 seconds.  
60 cycle area 60 seconds.

## **SPECIFICATIONS**

Height: 63" Width: 28" Depth: 61" Export Packing: 57 cft.

**SEGA<sup>®</sup>** MANUFACTURED BY  
**enterprises Ltd.**

TOKYO INT'L AIRPORT P.O. BOX 63, TOKYO, JAPAN CABLE: SEGASTAR TOKYO