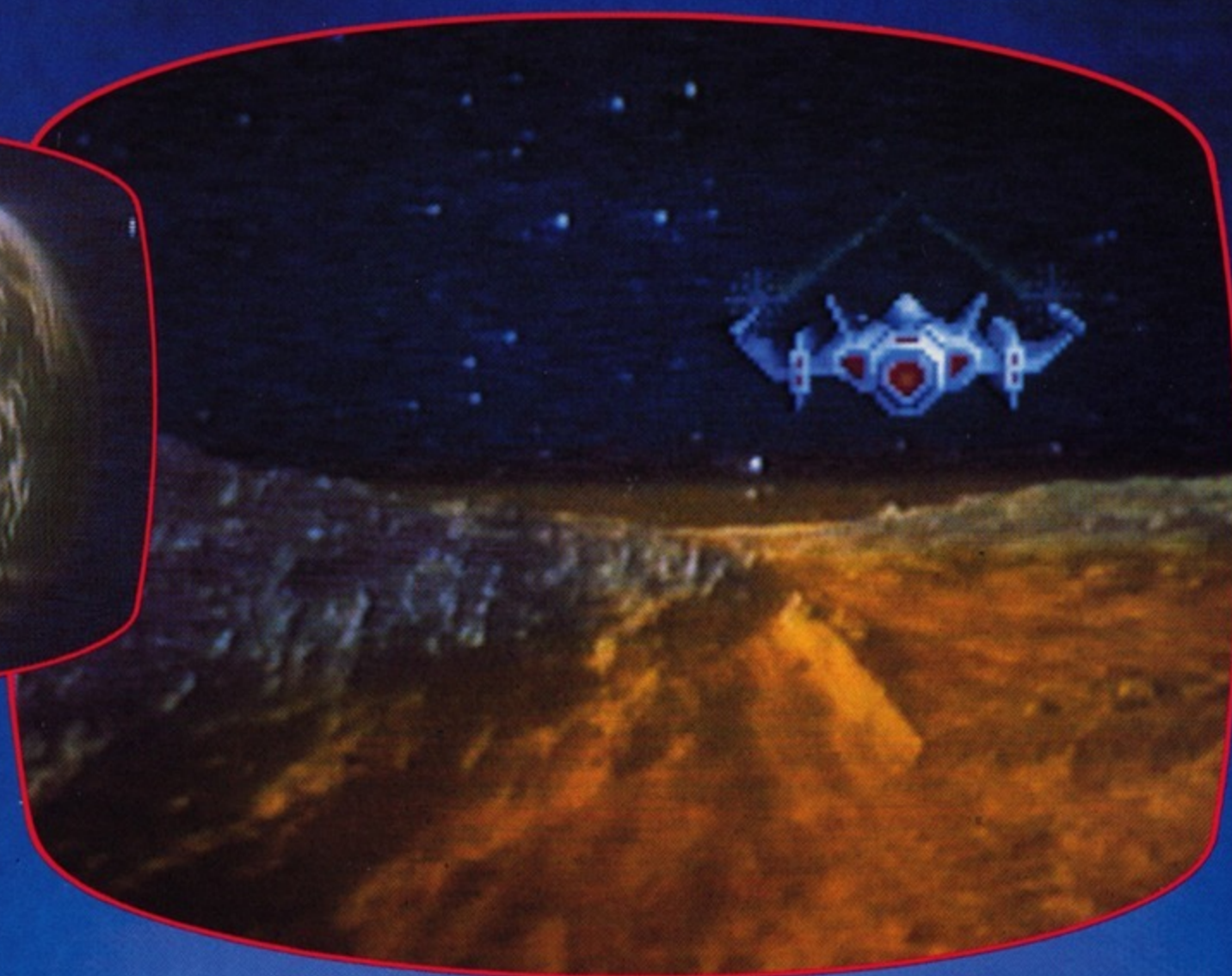
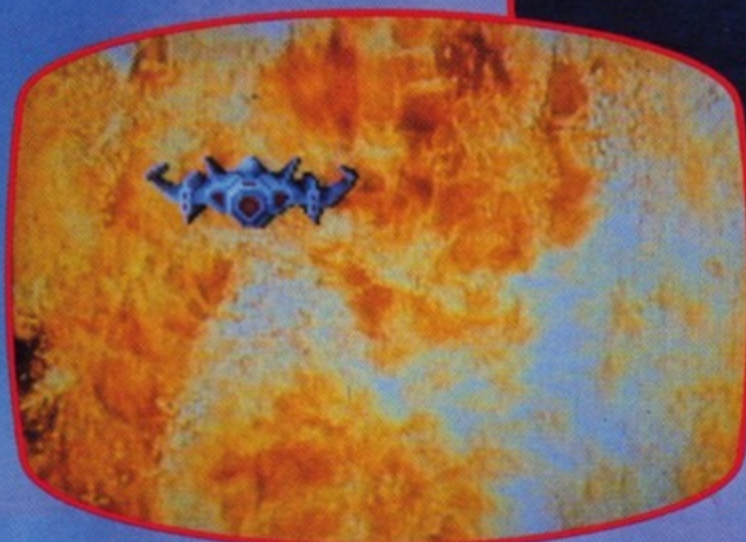


# ASTRON BELT

T.M.



**BOLDLY INTRODUCED IN '82  
BREATHTAKINGLY PERFECTED IN '83  
AVAILABLE TODAY AT YOUR  
BALLY MIDWAY DISTRIBUTOR**



a laser video system from *Bally* **MIDWAY**

"Astron Belt" is engineered and designed by Sega. Manufactured under license by Bally Midway Mfg. Co. TM & © 1983 Sega

© MCMLXXXIII BALLY MIDWAY MFG. CO.

T.M.

# Here's the Laser Disc Game you've Been Waiting For!



## Cabinet Specs

72 $\frac{5}{8}$ " Height  
24 $\frac{5}{8}$ " Width  
22 $\frac{1}{16}$ " Depth

Now the game that generated laser-disc fever at the 1982 A.M.O.A. is ready for your location. Sega and Bally Midway engineers have spent over a year perfecting ASTRON BELT since that introduction. Prototyping, location polling, surveying, fine-tuning and torture-testing ASTRON BELT for one reason, we don't make them for us, we make them for you. The result—a laser disc game system with the reliability, quality control, and player response to match its earnings. And it's backed by Bally Midway's Service and Parts network, because downtime means lost profits. See your Bally Midway Distributor and play ASTRON BELT. Then discover the features that make ASTRON BELT the laser disc game you've been waiting for.

## Operator Features:

1. Combination base/clock game. The advantages of timer play with the base feature players expect.
2. Continuous or individual play preset by the operator.
3. Total interaction between computer generated graphics and laser disc images.
4. Ergonomically designed analog joystick for improved control.
5. Available in upright model.

© MCMLXXXIII BALLY MIDWAY MFG. CO.

"Astron Belt" is engineered and designed by Sega. Manufactured under license by Bally Midway Mfg. Co. TM & © 1983 Sega

**Bally MIDWAY MFG. CO.**

10601 W. Belmont Avenue  
Franklin Park, Illinois 60131  
Telephone (312) 451-9200



PRINTED IN U.S.A.