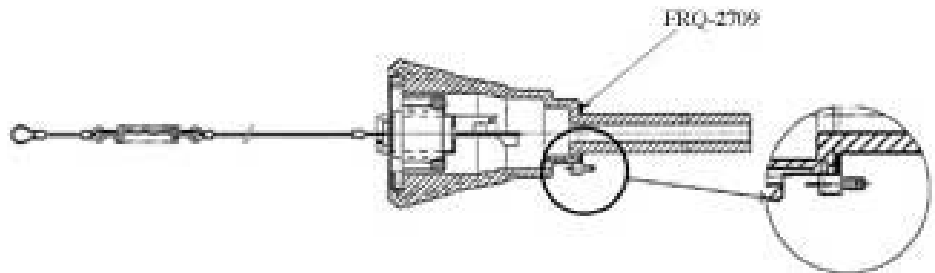


SEGA SERVICE

Field Service Bulletin Brave Firefighter Nozzle Assembly Parts Advisory

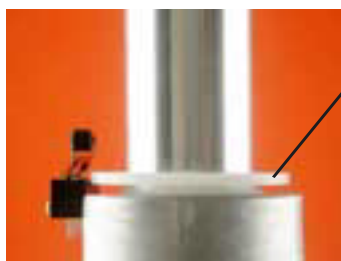
Problem: Micro-switch (Spray Select) breaks causing players not to be able to control spray type. Problem occurs in newly purchased replacement Nozzle Assy.

Solution: Verify Washer (FRQ-2709) is installed on the assembly. See figures below. If Washer is missing, please contact your Sega Parts Distributor to obtain the washer.



Nozzle Assembly Drawing showing placement of FRQ-2709

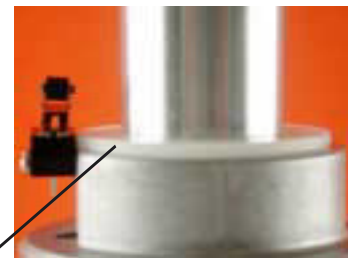
Washer (FRQ-2709) MUST be on this surface to assure no damage to the Micro-Switch.



Bevel Up
Gap between
Washer and Nozzle

Incorrect Placement

Bevel Down
No Gap between
Washer and Nozzle



Correct Placement