

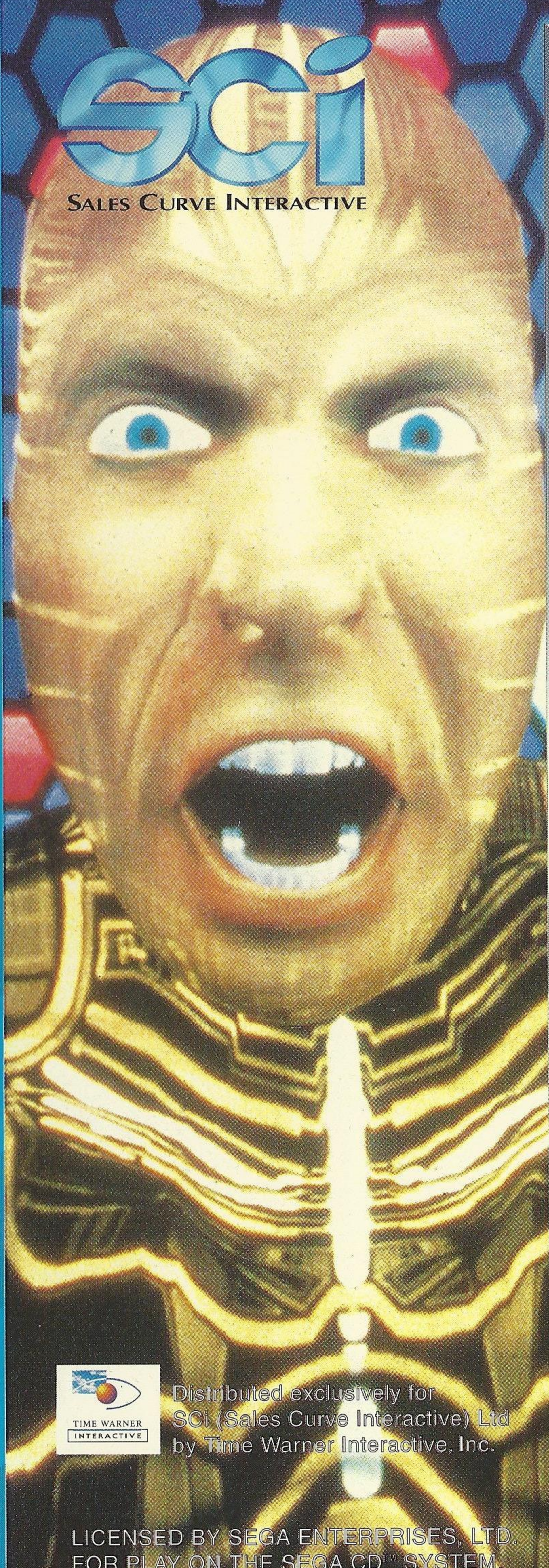
SEGA™

sci

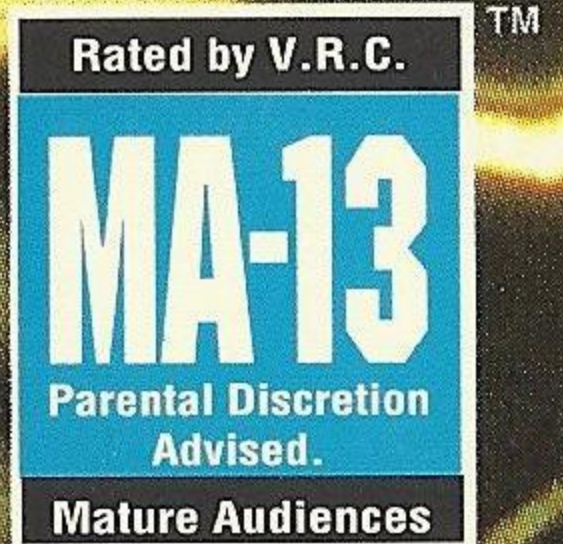
SALES CURVE INTERACTIVE

SEGA CD™

THE
LAWNMOWER
MAN™



Distributed exclusively for
SCi (Sales Curve Interactive) Ltd
by Time Warner Interactive, Inc.



LICENSED BY SEGA ENTERPRISES, LTD.
FOR PLAY ON THE SEGA CD™ SYSTEM.



This official seal is your assurance that this product meets the highest quality standards of SEGA™. Buy games and accessories with this seal to be sure that they are compatible with the SEGA CD™ SYSTEM.

WARNING: READ BEFORE USING YOUR SEGA VIDEO GAME SYSTEM.

A very small percentage of individuals may experience epileptic seizures when exposed to certain light patterns or flashing lights. Exposure to certain patterns or backgrounds on a television screen or while playing video games may induce previously undetected epileptic symptoms even in persons who have no history of prior seizures or epilepsy. If you, or anyone in your family, has an epileptic condition, consult your physician prior to playing. If you experience any of the following symptoms while playing a video game - dizziness, altered vision, eye or muscle twitches, loss of awareness, disorientation, any involuntary movement, or convulsions - IMMEDIATELY discontinue use and consult your physician before resuming play.

WARNING TO OWNERS OF PROJECTION TELEVISIONS: STILL PICTURES OR IMAGES MAY CAUSE PERMANENT PICTURE-TUBE DAMAGE OR MARK THE PHOSPHOR OF THE CRT. AVOID REPEATED OR EXTENDED USE OF VIDEO GAMES ON LARGE-SCREEN PROJECTION TELEVISIONS.

CONTENTS

A note from the Producer of The Lawnmower Man™ Movie.....	4
Introduction.....	5
Setting Up.....	6
Quickstart.....	6
The Game	7
The Lawnmower Man™	9
Cyberjobe	13
Take Control!	14
1 - Cyber Boogie.....	15
2 - Crackin' the Code.....	15
3 - Path to Freedom	16
4 - Ledge of Darkness.....	16
5 - Access Denied	17
6 - Into the Void.....	17
7 - Breaking Through.....	18
8 - Leap of Faith	18
9 - Tune In	19
10 - The Sting.....	19
11 - Spin Out	20
12 - Glory Road	20
Characters	21
Dr Lawrence Angelo	21
Jobe Smith - Cyberjobe.....	21
Peter Parkette.....	21
Carla Parkette	22
Rosco	22
Dr Frederick Timms	22
The Director	23
Father McKeen	23
Jake Simpson.....	23
Steve Hillage biography	24
Credits	24

For more information and Technical Support,
call the Gameplay Hotline on (408) 434 3950 (USA); 44 (0)604 604060 (Europe).

A NOTE FROM THE PRODUCER OF THE LAWNMOWER MAN™ MOVIE.

When we embarked on the production of The Lawnmower Man™ we did not then realize that we were creating a film whose title would become generically used to describe the stunning visual effects that can now be created in Virtual Reality.

It was natural for us to have immediately applied the concept of these effects and fictional story of transition to and from Virtual Reality to the media of computer and video games. Through our partnership with SCi (Sales Curve Interactive) Ltd can now see clearly the increasing tie-ups between feature film and the wonderful new media of CD-ROM.

In "The Lawnmower Man 2™" we will take this concept even further. The film will actually be produced to incorporate effects designed for computer games, and I acknowledge, with thanks, the tremendous input of SCi (Sales Curve Interactive) Ltd.

We hope that, like us, you will be thrilled with this product and your appetite whetted further for "The Lawnmower Man 2™".



Edward Simons
Chairman
Allied Vision/The Big Red Trading Company

INTRODUCTION

The story so far...

Jobe, a simpleton who spends his hours cutting neighborhood lawns, is used as a human guinea-pig by Dr Angelo and attains superhuman powers with the help of a unique Virtual Reality system. These powers, initially intended for peaceful purposes, are misused by "The Shop", a government agency financing Dr Angelo's experiments. Their intervention turns the initially passive Jobe into Cyberjobe, a highly destructive psychopath intent on taking over the world from within its computer networks.

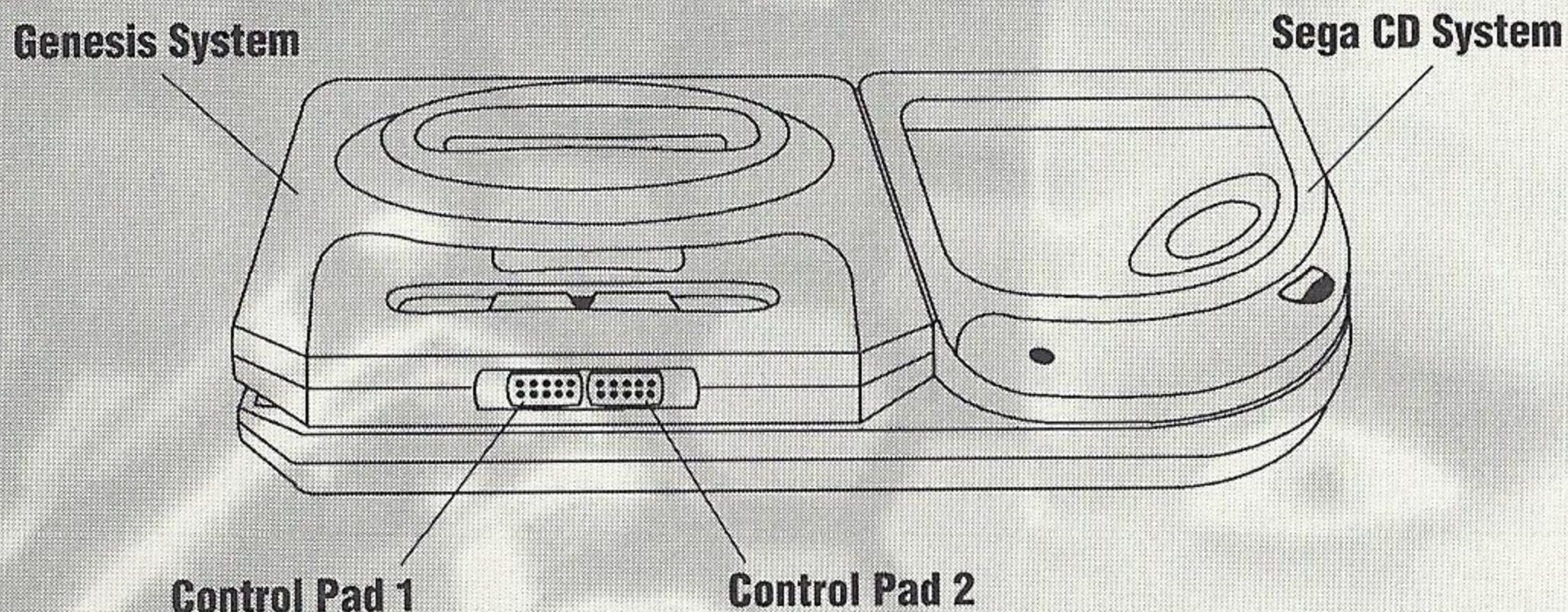
The game: Cyberjobe has entered Virtual Reality within the world's computer networks and now seeks revenge against Dr Angelo for the injustice carried out against him. Using his new-found powers he manages to pull Dr Angelo, Carla and Peter with him into his V.R. domain. As Dr Angelo, push your gaming skills to the limit as you pit yourself, both mentally and physically against the ultimate in computer incarnations.

CYBERJOBE AWAITS YOU!

HANDLING YOUR SEGA CD DISC

- The Sega CD Disc is intended for use exclusively with the Sega CD™ System.
- Do not bend it, crush it or submerge it in liquids.
- Do not leave it in direct sunlight or near a radiator or other source of heat.
- Be sure to take an occasional recess during extended play, to rest yourself and the Sega CD Disc.
- **KEEP YOUR SEGA CD DISC CLEAN.** Always hold by the edges, and keep in its case when not in use. Clean with a lint-free, soft dry cloth -wiping in straight lines from center to edge. Never use solvents or abrasive cleaners.

SETTING UP

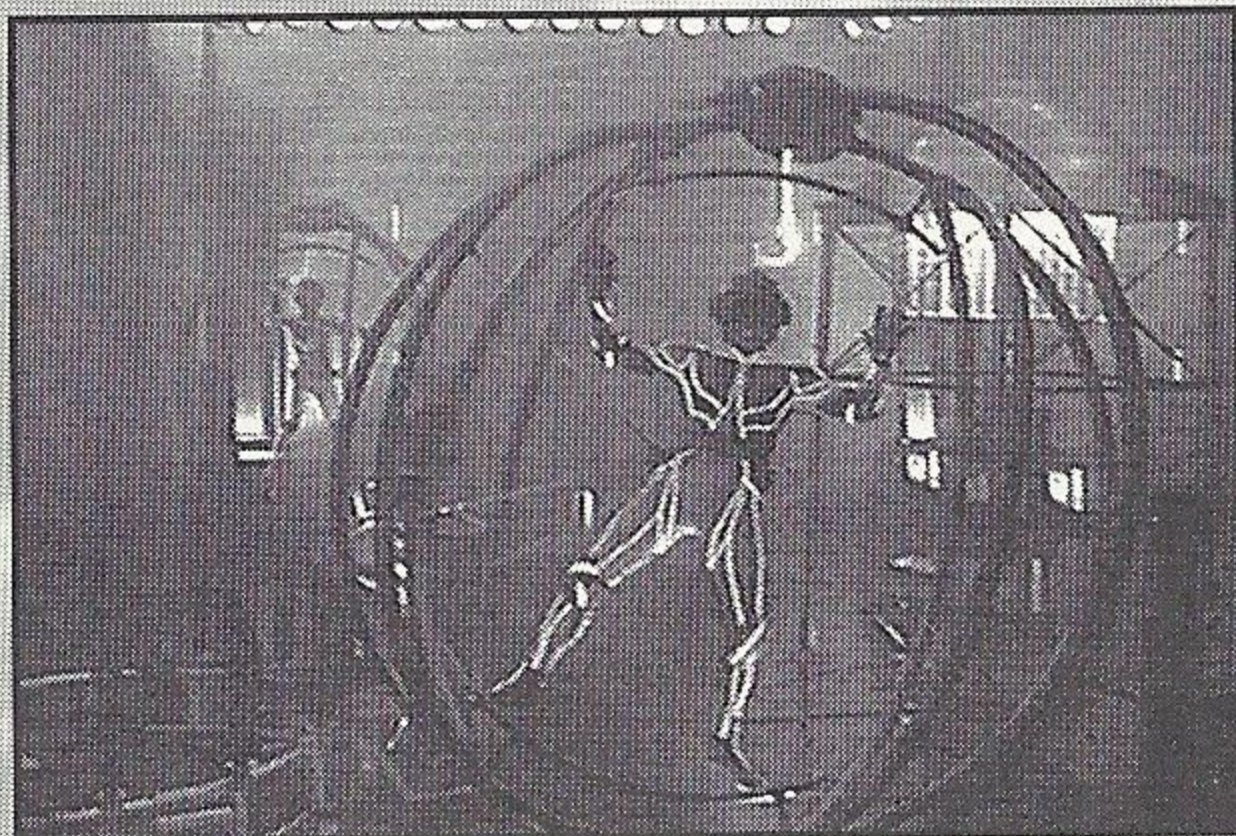


1. Connect your Sega CD and Sega Genesis™ systems and plug in control pad 1.
2. Turn on your TV or monitor, and then turn on your Genesis. The Sega CD logo appears.
3. Press the open button on the Sega CD console to open the CD door. Place The Lawnmower Man™ CD into the tray, label side up. Close the CD door.
4. If the Sega CD logo is on screen, press **Start** to begin the game. If the Control Panel is on screen, move the cursor to the CD-ROM button, and then press **Button A,B** or **C** to begin.

Note: If The Lawnmower Man™ compact disc is already in the Sega CD when you turn it on, the game will begin automatically after a few moments.

5. The Sega screen appears, followed by the SCi (SALES CURVE INTERACTIVE) Ltd Logo, Credits and Introduction screens.

QUICKSTART

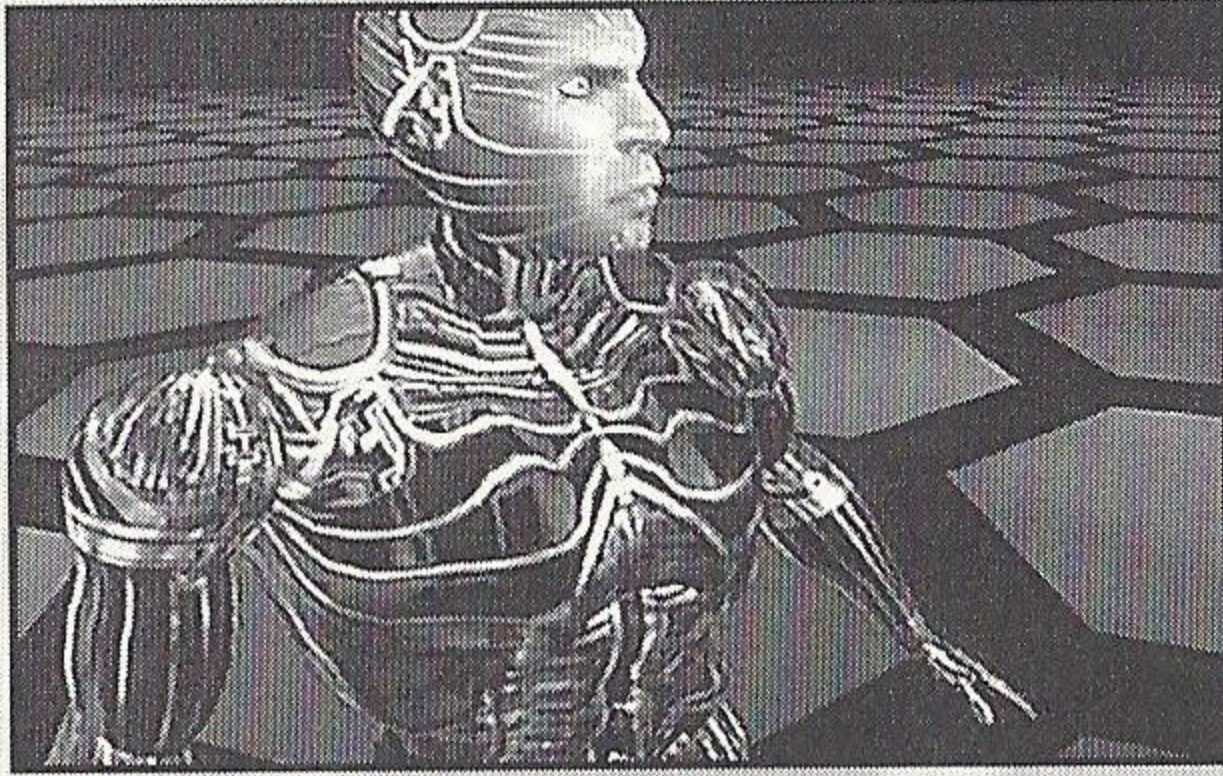


If you wish to start playing the game as quickly as possible then:

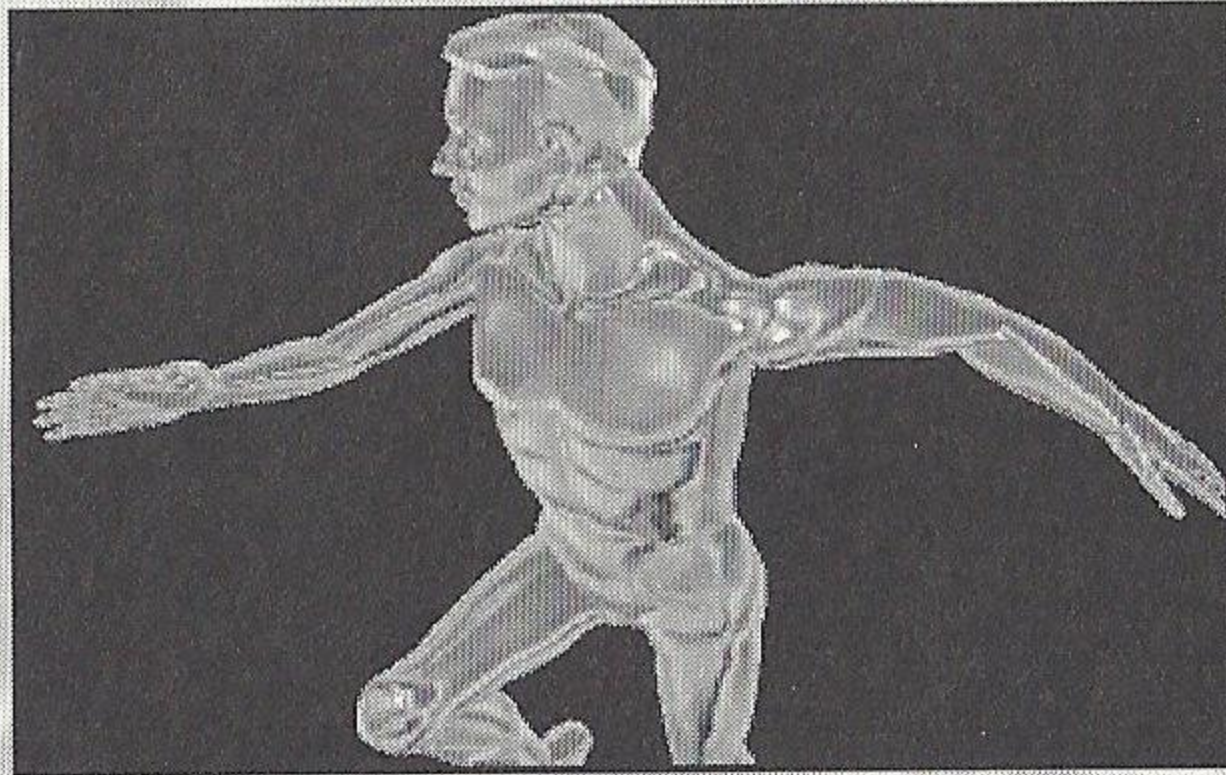
- 1) Read the following section 'The Game' first and...
- 2) Refer to the 'Controls' sections as you reach each new part of Cyberjobe's Virtual Reality universe.

THE GAME

Following Dr Angelo's experiments, Jobe Smith the simpleton becomes a being of pure energy and strange powers. In Virtual Reality Jobe has a dual personality. This can manifest itself either as Cyberjobe or Big Red, the Virtual Reality incarnation of the killer lawnmowing machine.

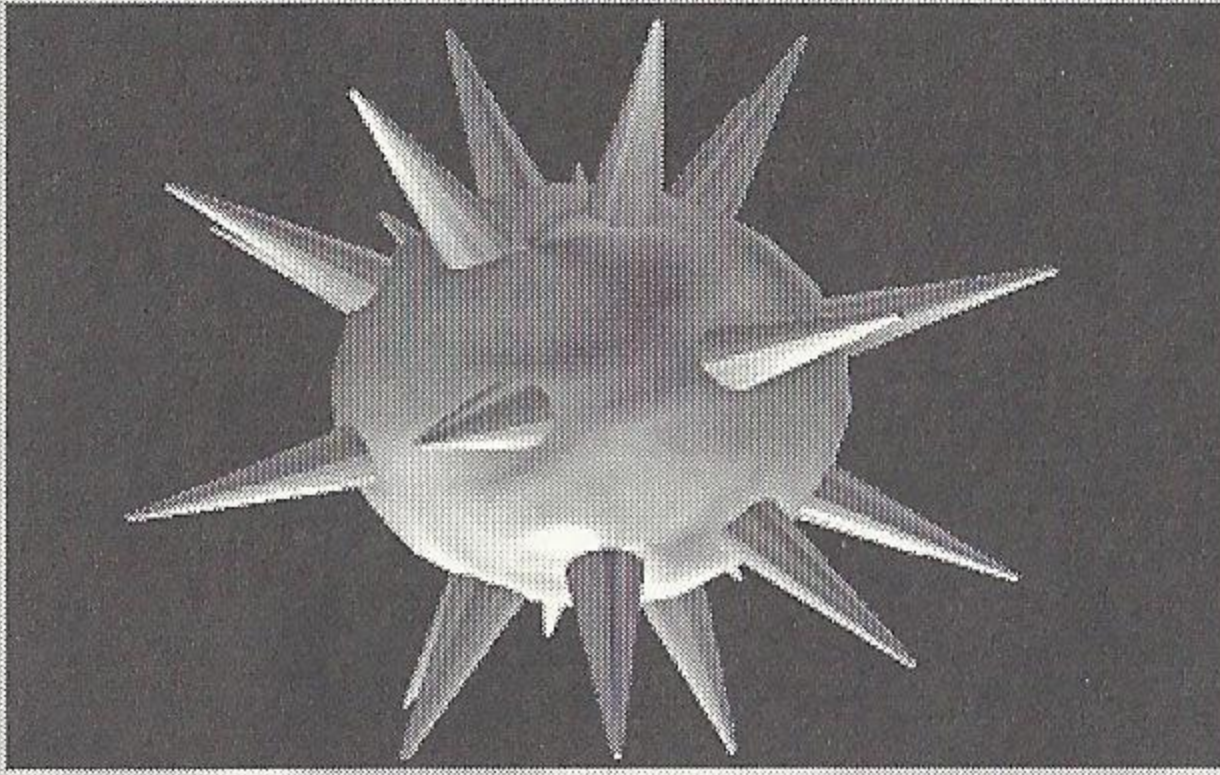


Cyberjobe thinks he's been betrayed by Dr Angelo, Peter and Carla. In an insane fit of rage he drags Dr Angelo, Peter and Carla out of the Real World and into Virtual Reality.

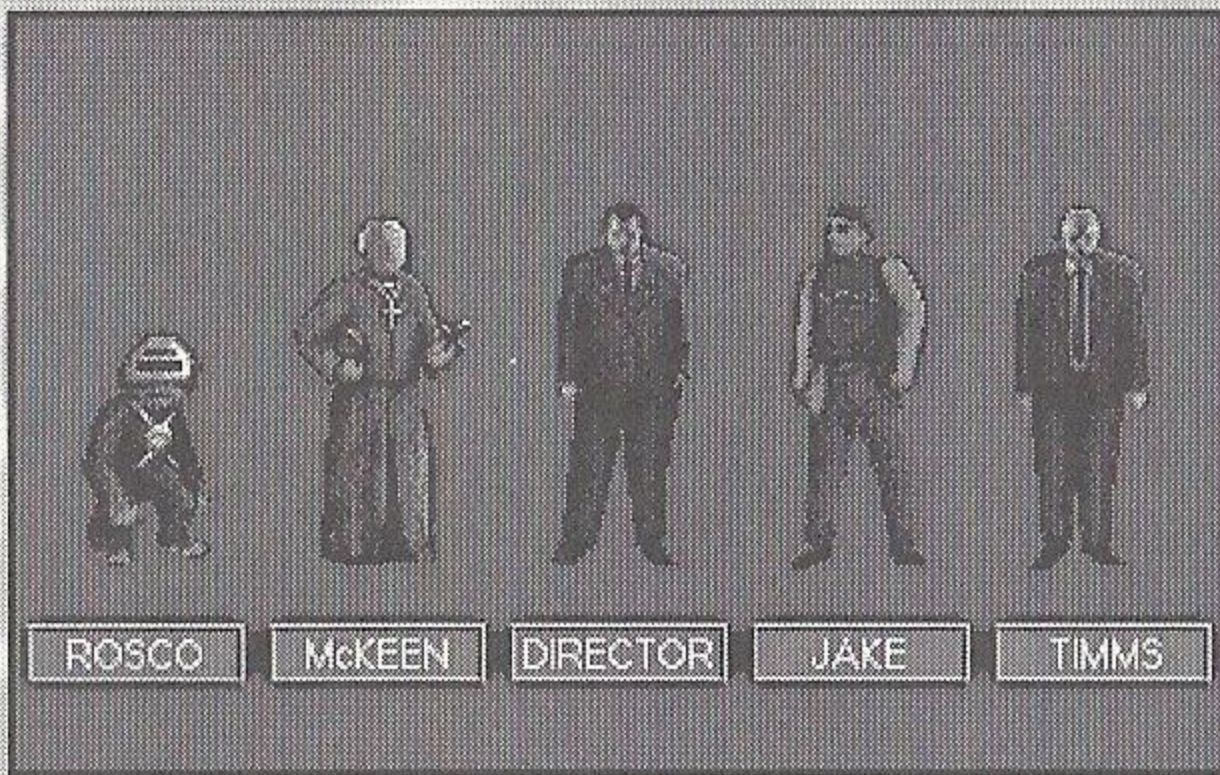


In The Lawnmower Man™ game you take control of Dr Angelo as he battles through a bizarre Virtual Reality universe created by Cyberjobe. Dr Angelo must first rescue Carla and then Peter if he is to have any hope of escaping from Cyberjobe's universe.





Cyberjobe has placed Carla and Peter in Cyberstasis Spheres which will terminally decay and kill them unless Dr Angelo can reach them in time and unlock their Cyberstasis Spheres with Decryption Units. While in Cyberjobe's universe, Dr Angelo must collect as many Decryption Units as possible to be sure of unlocking the Cyberstasis Spheres. Cyberjobe has placed the two Cyberstasis Spheres somewhere in his Virtual Reality universe.

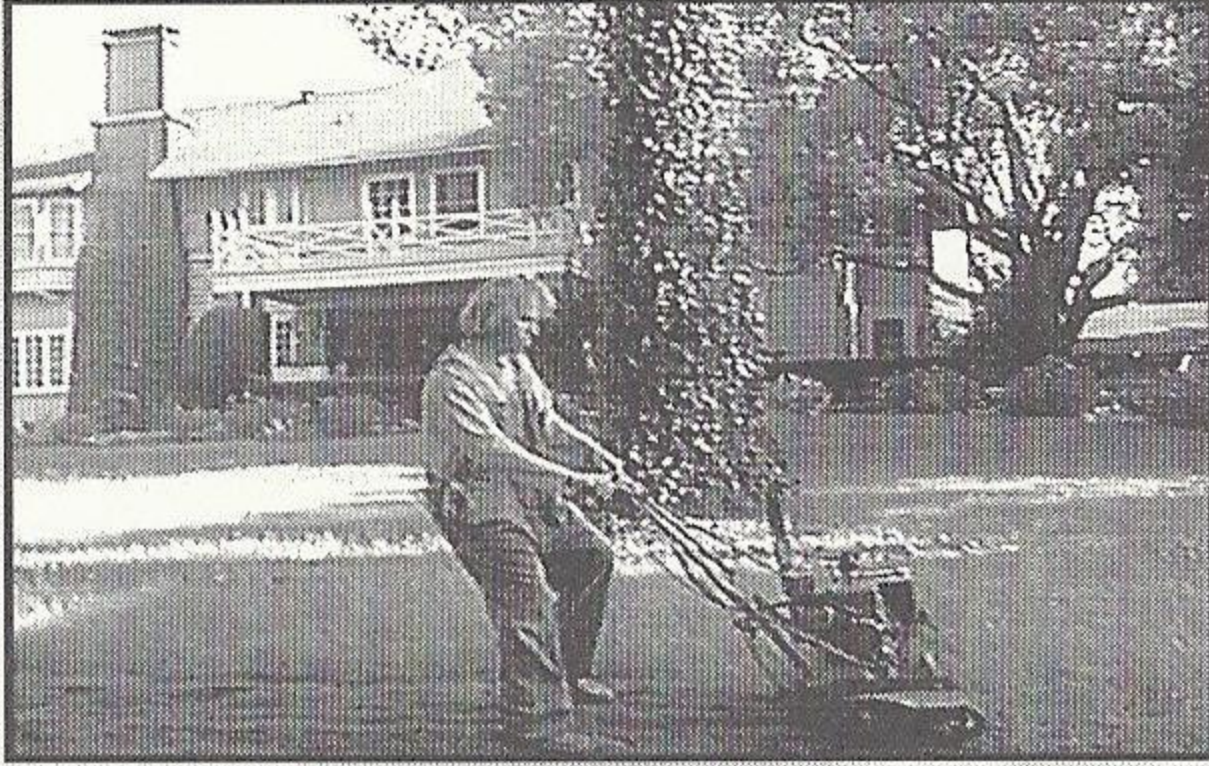


Cyberjobe has filled his universe with copies of people from his memory. Not only are all of these out to stop Dr Angelo but also Cyberjobe himself enters the game and plays against Dr Angelo. However he doesn't want Dr Angelo to be defeated too soon. Before that he wants to see him suffer...

THE LAWNMOWER MAN™

Dr Lawrence Angelo developed equipment and techniques which allowed him to enter a world that existed inside computers - A Virtual Reality.

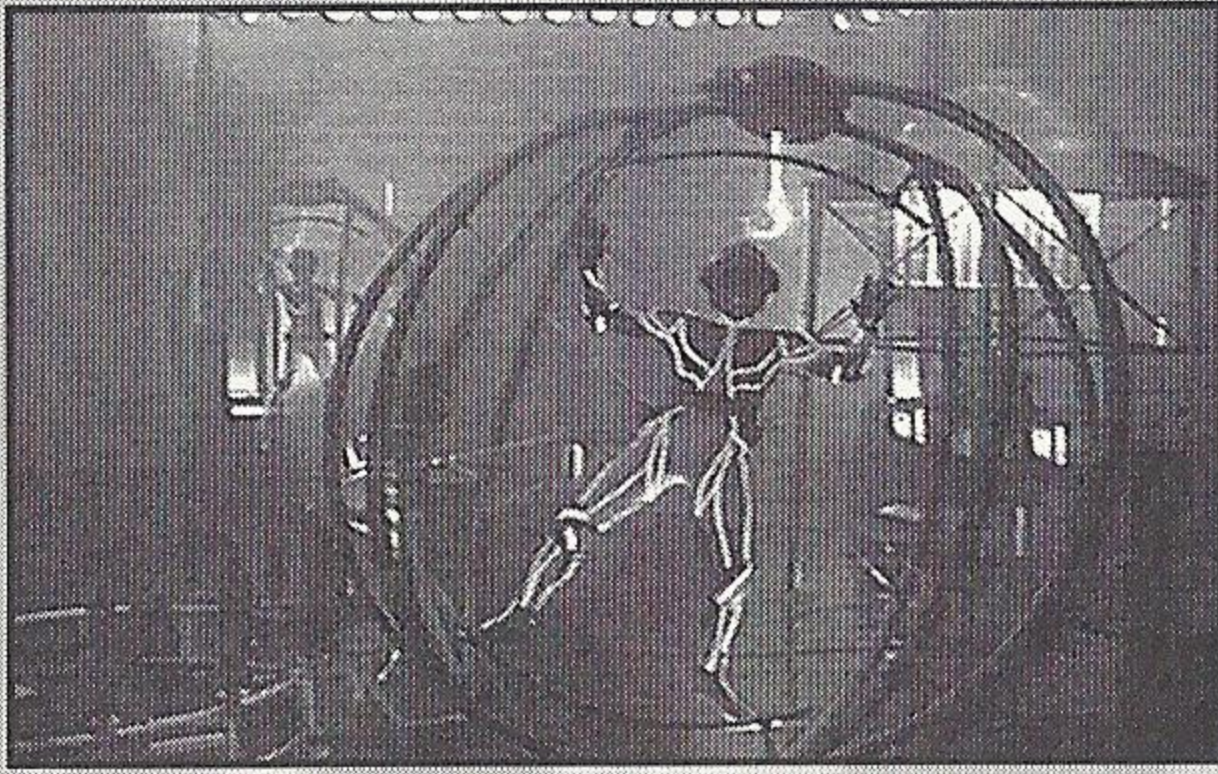
Dr Angelo used his Virtual Reality equipment on a simple man called Jobe, a man who mowed lawns for a living.



As Dr Angelo worked on Jobe, Jobe's intelligence started to increase. He built his own lawnmower which he called Big Red. He also started to see how people mistreated him, just because he was simple. Jake, who worked at the gas station picked on him and his landlord Father McKeen bullied him.



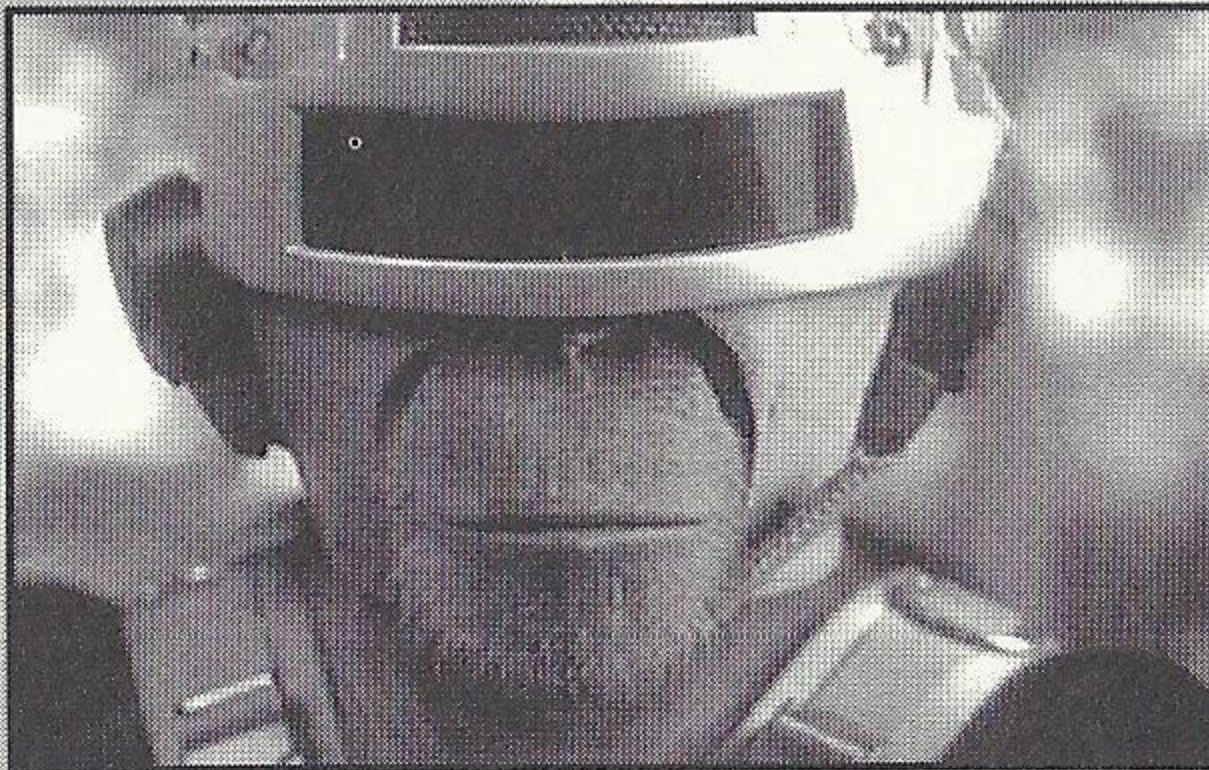
Jobe fell for the sexy Marnie. She couldn't believe that the new improved Jobe had been her lawnmower man and took no time in seducing him. Jobe was enthusiastic but inexperienced and eventually took Marnie for a joy ride in Virtual Reality. A ride which overloaded Marnie's mind and left her drooling, wide eyed and crazy.



Then Dr Angelo's techniques started to unlock hidden powers in Jobe. Powers which had existed in man for thousands of years, powers which conjurers and alchemists used in the distant past. Even when not in Virtual Reality Jobe found that strange things were happening to him. He could read peoples thoughts, move physical objects with his mind, create fire and illusions...

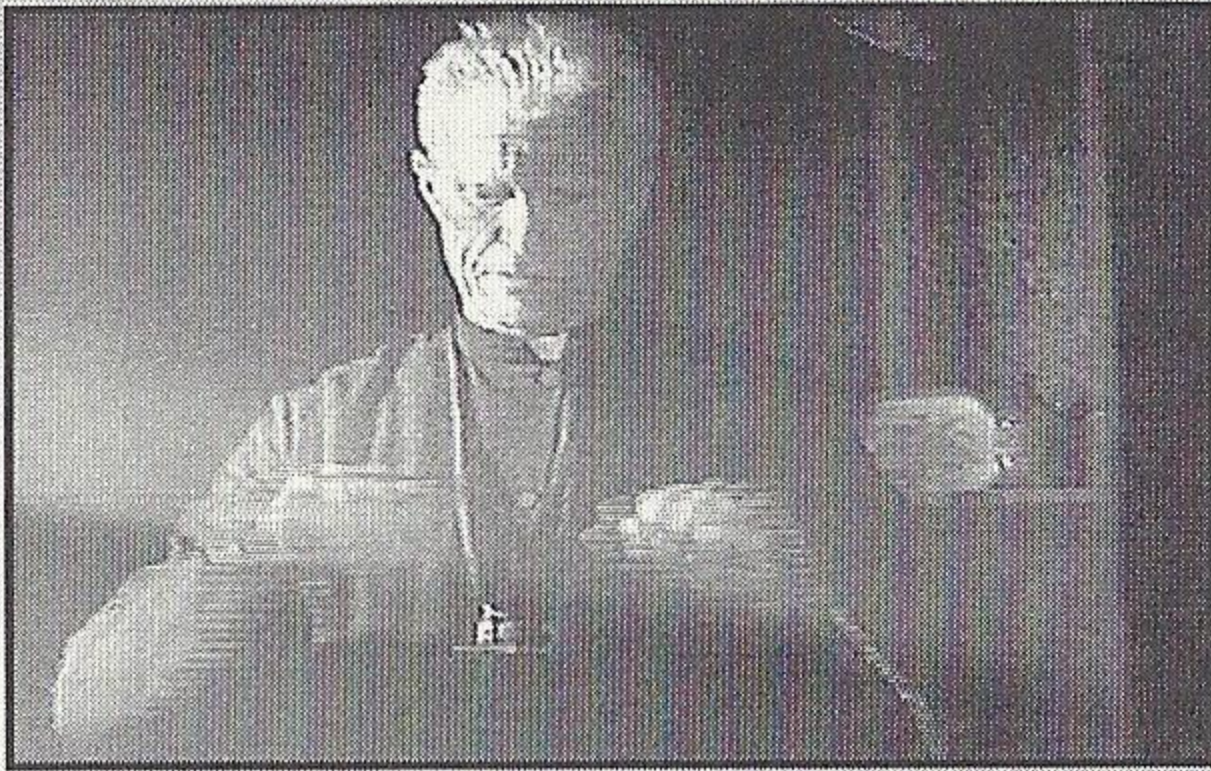


Meanwhile Dr Angelo's superiors at Virtual Space Industries, the research complex where he had his Virtual Reality equipment set up, were ordered by a government department known simply as The Shop to feed Jobe some 'Project Five Formula'. The Director of The Shop ordered Dr Timms at Virtual Space Industries to secretly use the Project Five Formula on Jobe.



Dr Angelo had previously tried the Project Five Formula out on a Virtual Reality enhanced chimp called Rosco. He found that this Formula made Rosco unstable and very aggressive.

Now the Director wanted to try out the Project Five Formula on a human...



Jobe's powers increased dramatically and a dark side of him surfaced. He became dangerous and started to wreak revenge on people who had hurt or taunted him in the past. He even used his lawnmower, Big Red, to kill the cruel father of a young boy he had befriended. This boy was Peter. Peter and Carla, his mother, had always been kind to Jobe.



The Shop sent in a team to grab Jobe. He'd become a very valuable weapon and they wanted to study him. Jobe accused Dr Angelo of betraying him and killed the Shop thugs when they came to get him. He turned them into swirling clouds of globules which dissipated to nothing.



Jobe then raced to the Virtual Space Industries where he intended to use the Virtual Reality equipment to leave his body and enter Virtual Reality as pure information. Jobe saw this as the final stage of his evolution. He would become a god and if he entered Virtual Reality he would have access to every computer, every network, every database in the world. His birth cry would be the sound of every phone on the planet ringing...



Dr Angelo, assisted by Carla and Peter, attempted to stop Jobe, but were too late. Jobe managed to break into Virtual Space Industries and connect himself to the main computer system.



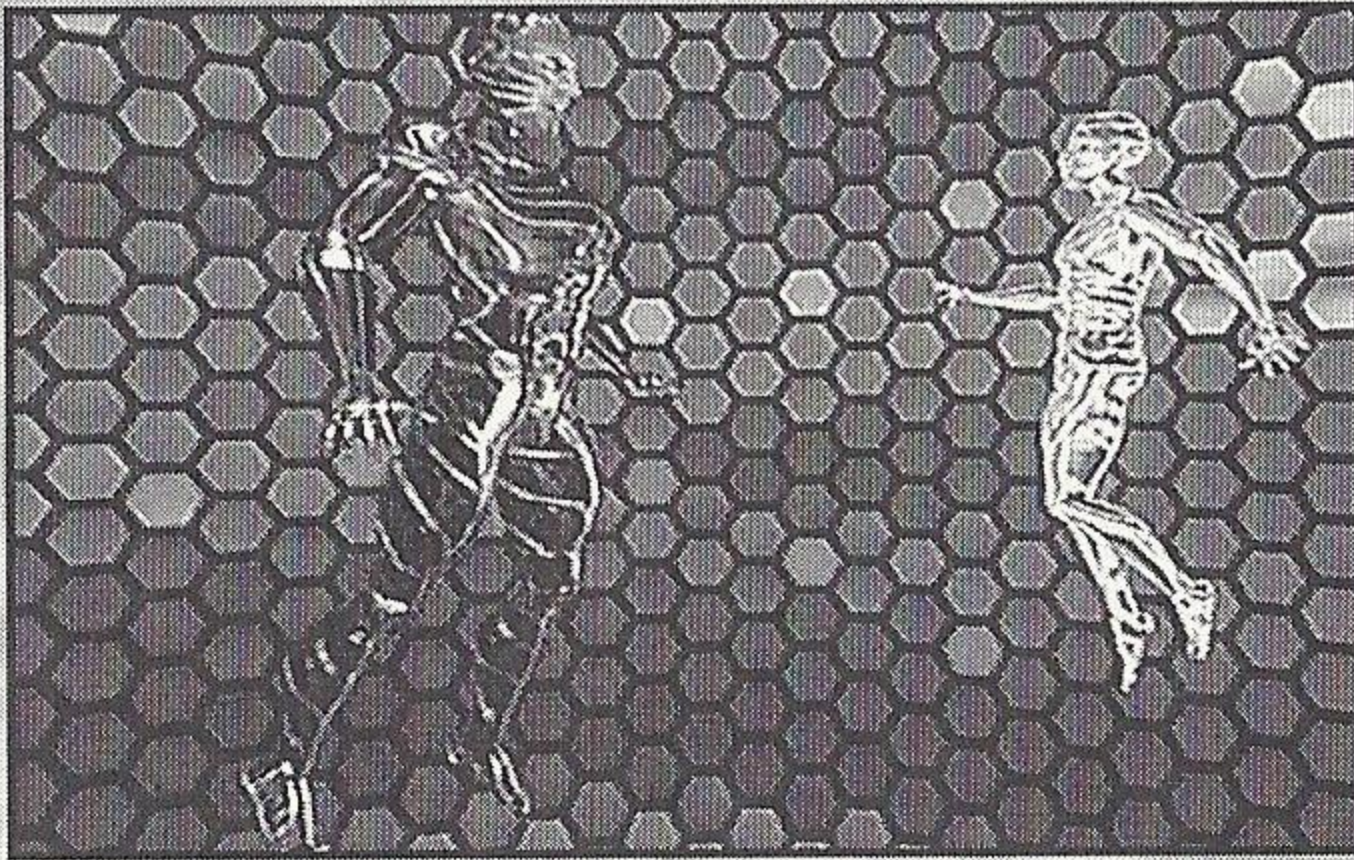
Jobe's body withered as he projected himself into Virtual Reality and became the most powerful virtual being ever created: CYBERJOB. Breaking out of the Virtual Space Industries' computer, Cyberjobe transferred himself into the computer networks of the world where he now resides, waiting for the chance to get even with Dr Angelo...

CYBERJOB



As a being of pure energy, time passes differently for Cyberjobe. A nanosecond (0.000000001 of a second) seems to last for minutes or hours. As the nanoseconds pass the pain which accompanied Cyberjobe's entry into the world's computer network becomes bearable. He creates his own private universe and fills it with copies of people from his memory and from the memories of people whose minds he's read.

In his own domain Cyberjobe is all powerful. However, this power is not tempered by wisdom. If he is indeed some sort of god then he's an insane child god.

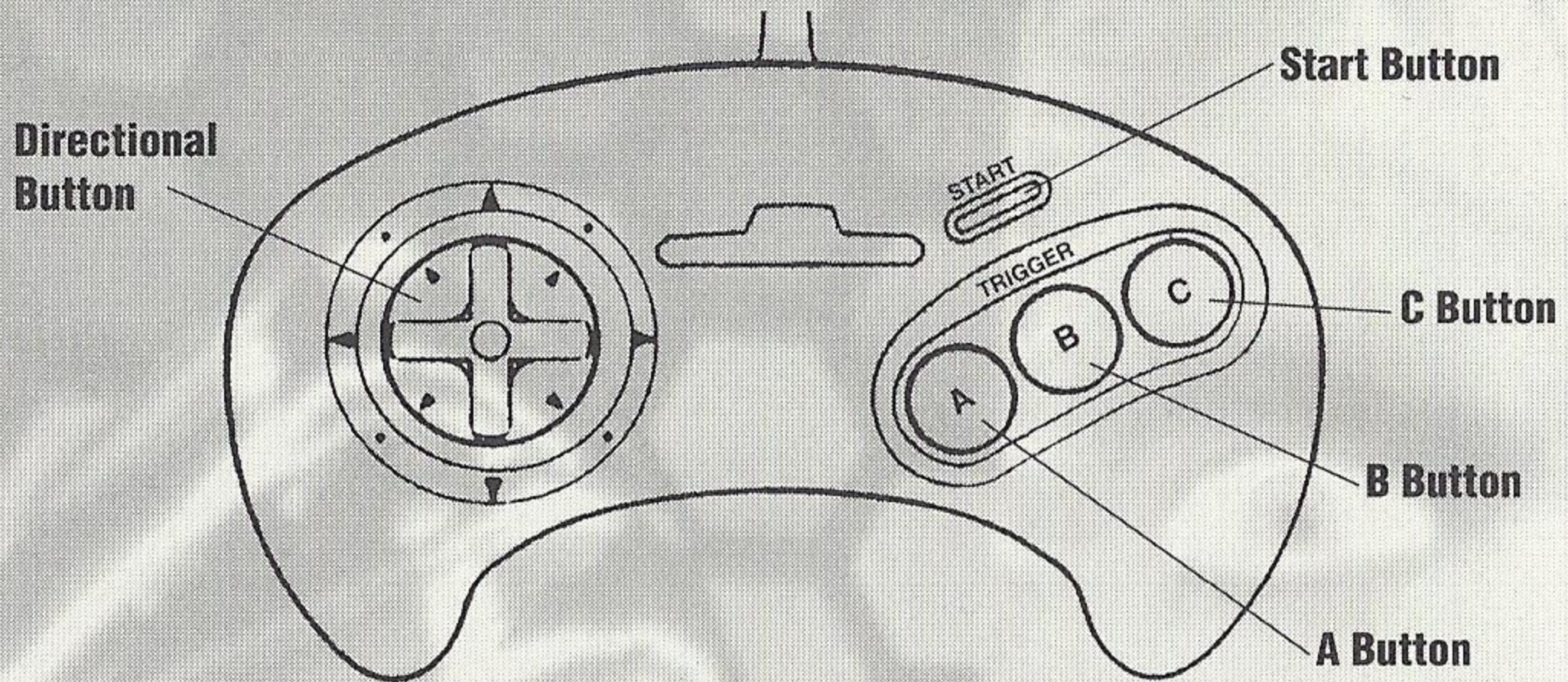


Cyberjobe rages at the man, woman and child who he believed betrayed him and forced him into this Virtual World of pain and confusion. He turns his attention outwards, towards the real world. He locates Dr Angelo, Carla and Peter...

Then Cyberjobe calls on his new power...

Less than a second has passed since he first entered the world's computer network.

TAKE CONTROL!



START

- During the Introduction, returns you to the title screen.
On the title screen, starts the game on the current skill level.

D-PAD

- Steers or moves the cursor.

BUTTON A

- Not used.

BUTTON B

- On the title screen, goes to skill level selection screen.
Select on the skill level selection screen.
Fire or select during the game.

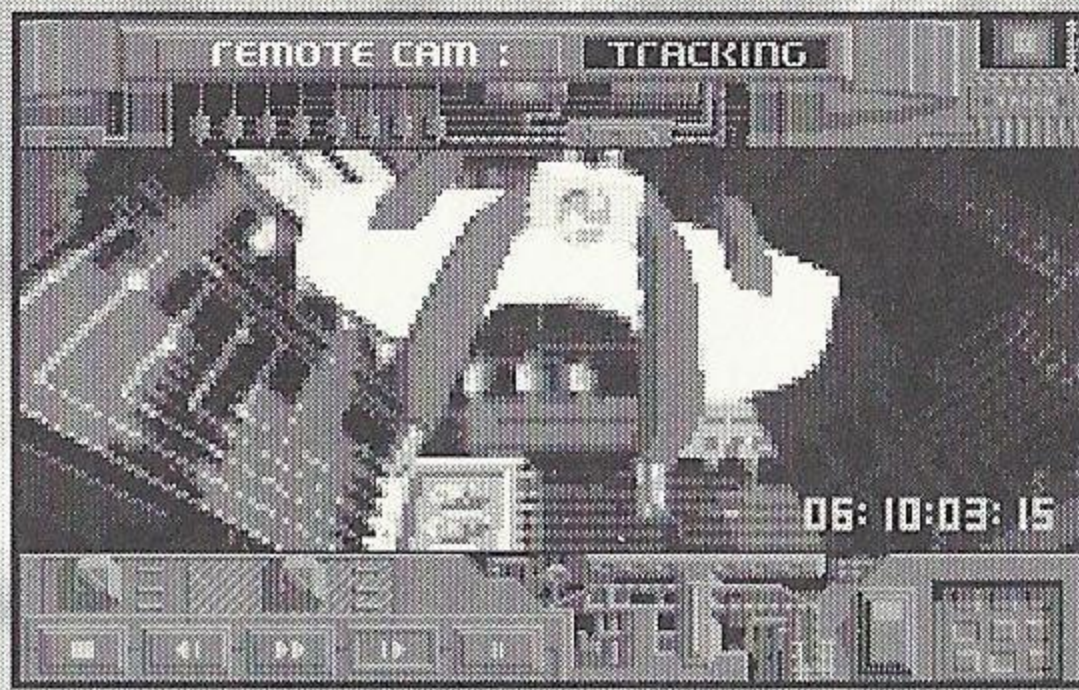
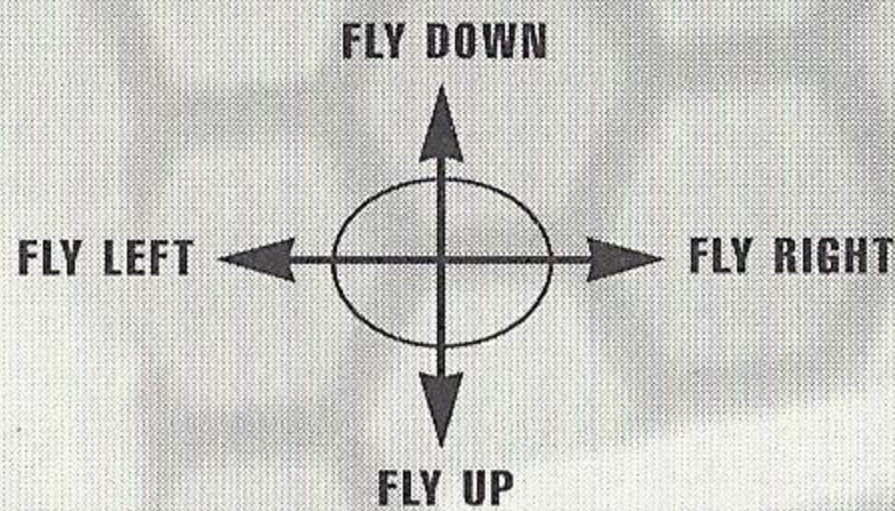
BUTTON C

- Not used.

At any point during the game pressing Start, A, B and C simultaneously will return you to the title screen.

To identify which section of The Lawnmower Man™ Game you are playing refer to the still which accompanies each of the control instructions. Most of the sections occur more than once, though with variations.

1 - CYBER BOOGIE



FIRE: SHOOT VASERS (VIRTUAL PULSE LASERS)

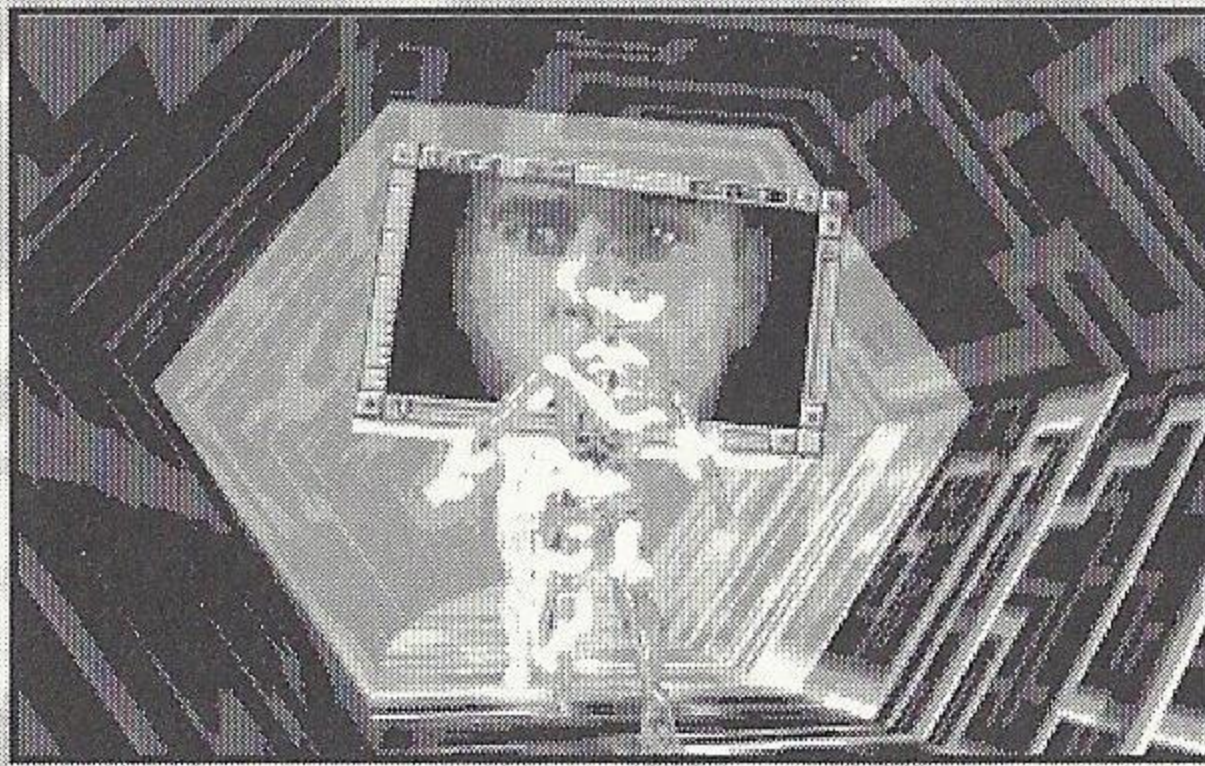
Fly through the tunnels avoiding contact with the walls. Fly around sections of wall which jut in from the sides of the tunnel. Shoot out the snapping jaw doors. Look out for sharp turns.

Watch the screen for head up indicators (displayed at the top of the screen) which tell you which way to turn.

The Vasers take a little while to recharge once they've been fired so make sure you are careful to fire at the correct time. You only get one shot at a time. The on-screen indicator will tell you when your Vasers are recharged.

Soundtrack composed and performed by Steve Hillage.

2 - CRACKIN' THE CODE



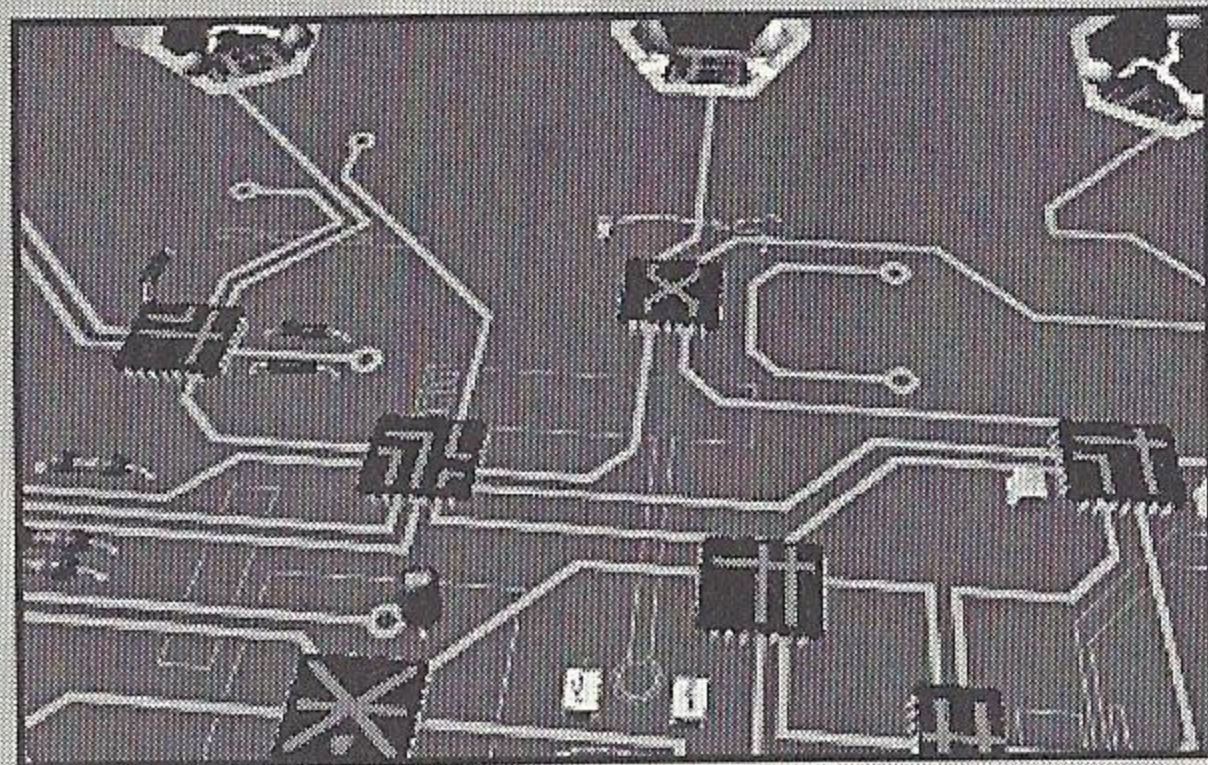
Some doors are sealed with coded locks. To gain access you must solve the code you are presented with. These codes take the form of 'odd one out' puzzles. There are four of these on each door. The four puzzles appear alongside each other and each of these contains four options.

- UP - HIGHLIGHT OPTION ABOVE
- DOWN - HIGHLIGHT OPTION BELOW
- FIRE - SELECT OPTION AND MOVE TO NEXT PUZZLE

If your answers are all correct, access will be granted once you have selected four codes.

Don't take too long because Big Red is on the way...

3 - PATH TO FREEDOM



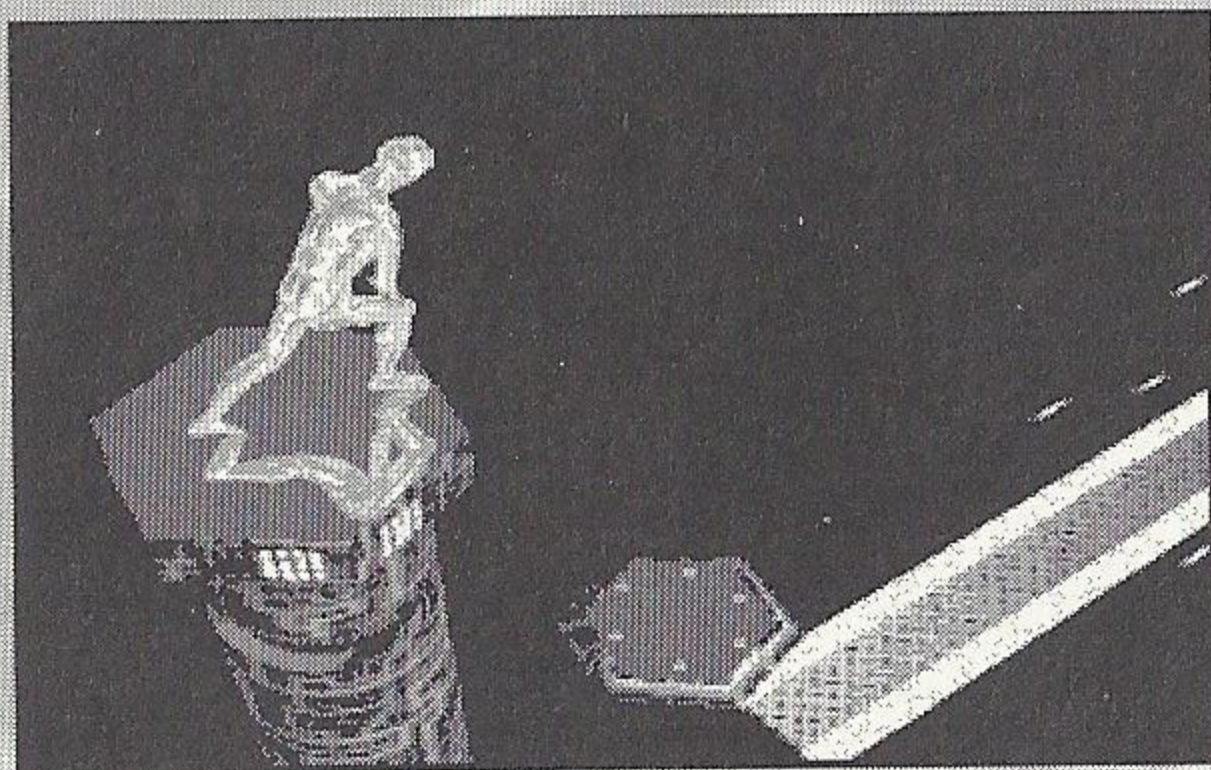
You are on a pillar at one side of a circuit board. Three tracks lead away from you, one to safety and two to an electrical death. To cross the circuit board safely you will have to study the layout and components carefully. Use your controls to move around the circuit board for a closer look.

Once you have decided which of the three possible routes is correct move either to the left side of the board, the center of the board or to the right of the board. Then press FIRE. You will fly down the LEFT, CENTER or RIGHT track.

Don't take too long to decide what to do...

UP, DOWN, LEFT AND RIGHT	-	MOVE AROUND THE CIRCUIT BOARD
FIRE	-	FLY DOWN A TRACK

4 - LEDGE OF DARKNESS



Jump from pillar to pillar to platform.

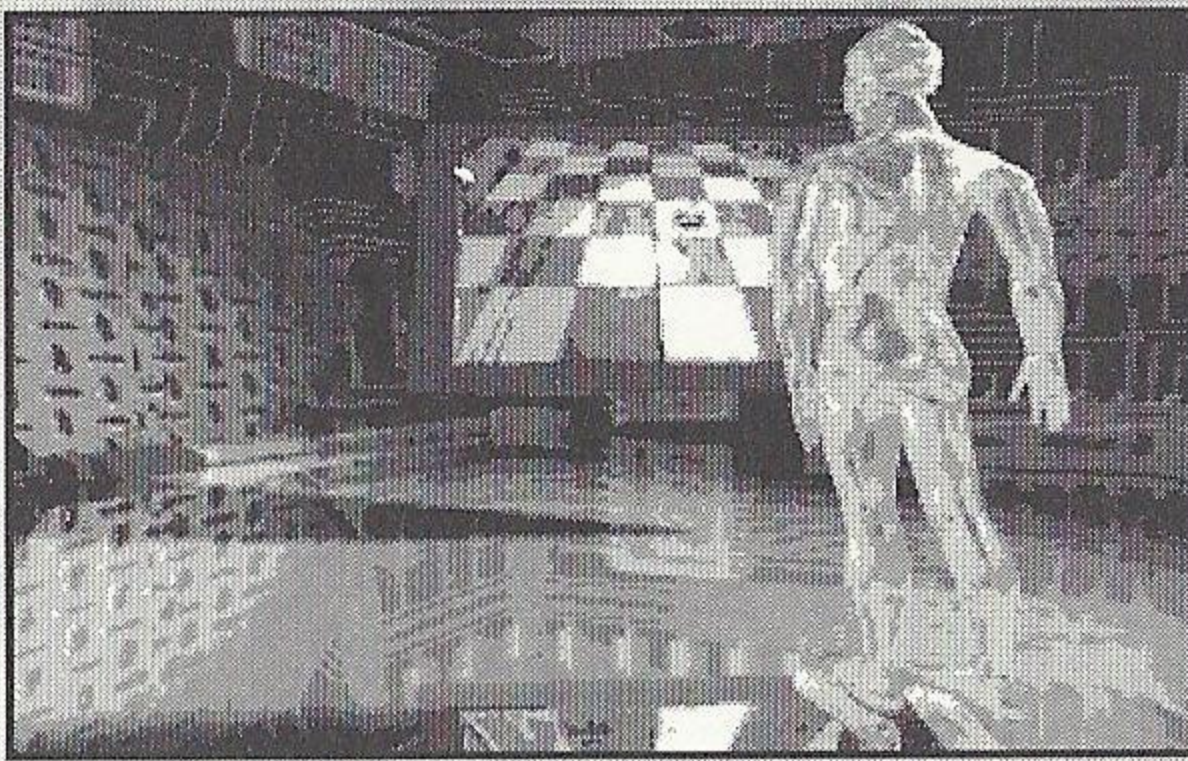
Press UP to jump from pillar to pillar.

Press UP to jump over obstacles.

Press DOWN to slide and avoid the bad guys.

In this section timing is everything.

5 - ACCESS DENIED



To open the sealed door in front of you, you must guide a robot around a hidden room, collecting door keys as it goes.

There is a screen floating in front of you showing a view of the hidden room. Now press FIRE to flip the screen over. On the reverse of the screen there are four arrows.

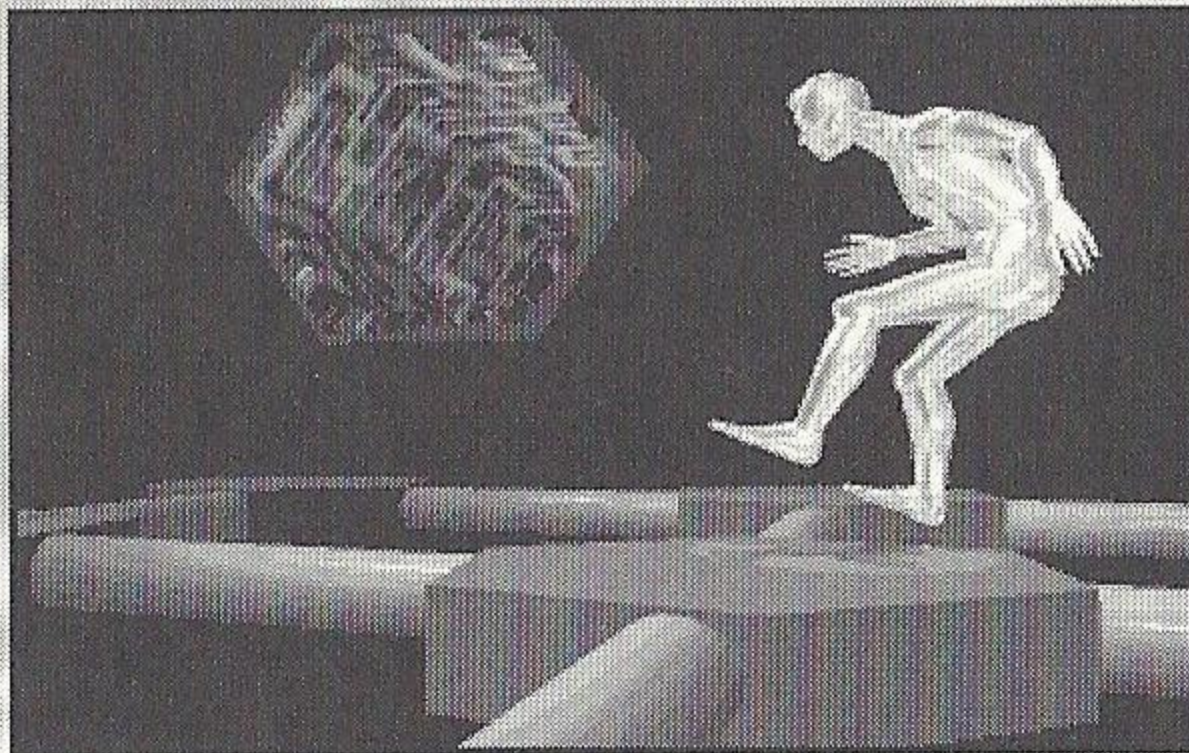
Use LEFT, RIGHT, UP and DOWN to move the robot one square in those directions. On the easier skill levels, at any time Fire will flip the screen back over so you can monitor your progress.

To collect a key, pass the robot over it.

Once you have collected the key you will be granted access.

Don't take too long...

6 - INTO THE VOID

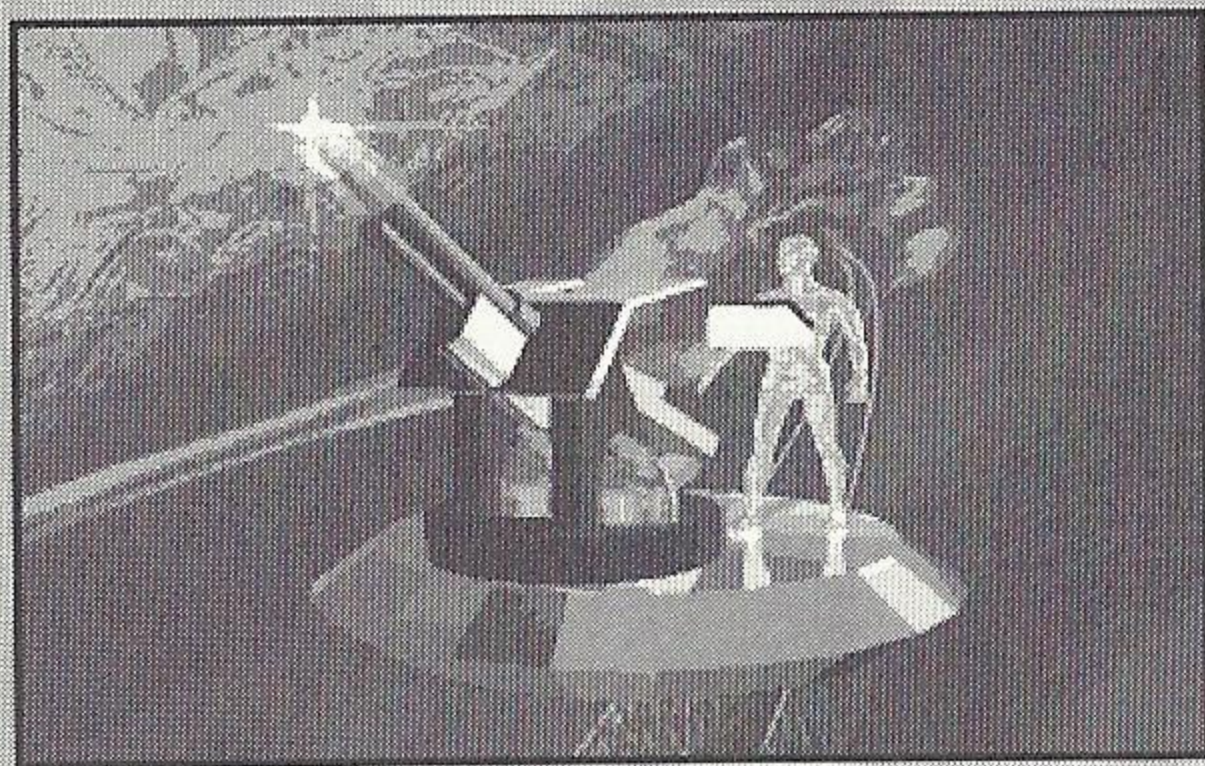


You must get safely to the other side of the Vortex Bridge without stepping onto the same tile as the invisible Dr Timms. Each time you move forward one tile the invisible Dr Timms moves one tile, towards you. If you step onto the same tile as Dr Timms you will be destroyed.

Use UP, DOWN, LEFT and RIGHT to choose which square you wish to move to. Press FIRE to move.

But don't take too long...

7 - BREAKING THROUGH

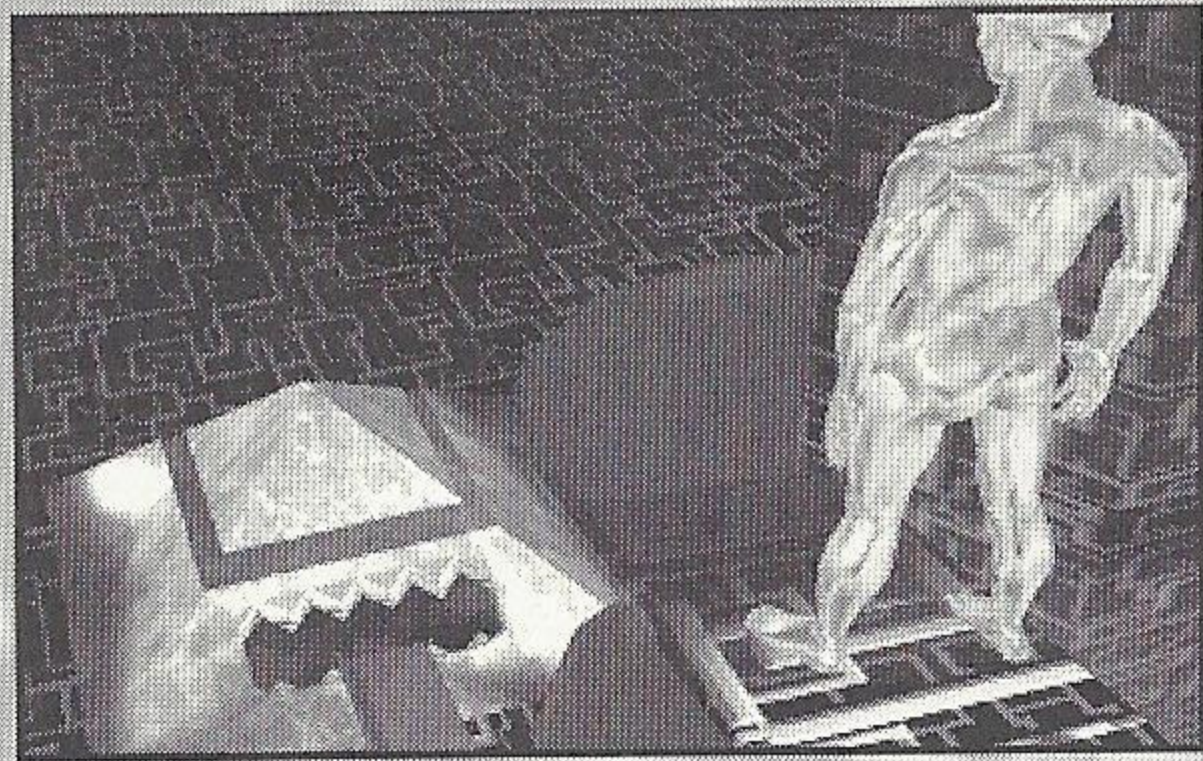


While facing Father Mckeen, you will both be equipped with a cannon. There is an invisible wall between yourself and Father McKeen and in this wall there is a single hole. You and Father McKeen take turns firing at each other, trying to get your shell to pass through the hole and hit your opponent.

A control pad will appear on screen showing possible elevations for the barrel of your gun. Use UP, DOWN, LEFT and RIGHT to highlight the icon which shows what you believe to be the correct angle of elevation.

Press FIRE to fire your Cannon. Watch carefully what happens when your shell hits the wall...

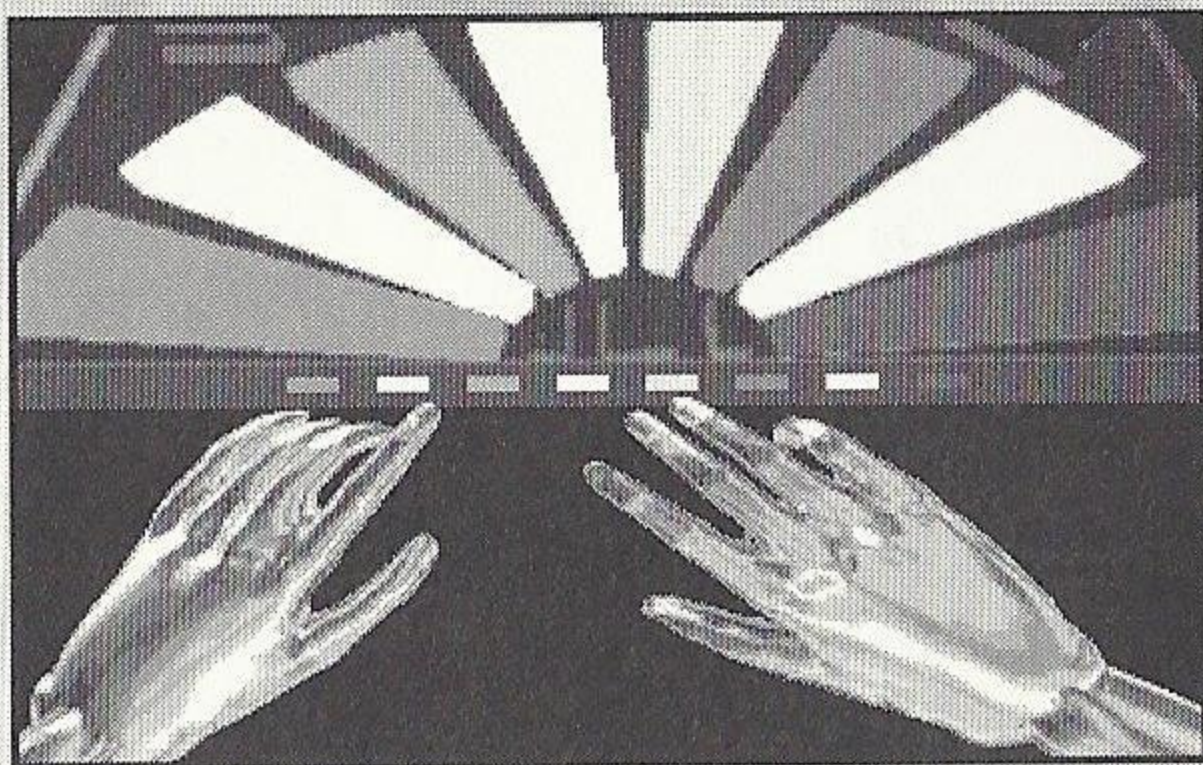
8 - LEAP OF FAITH



You are at the top of a slide which may lead to your doom if you don't time your jump correctly. Leap onto the slide so that you slide safely through the snapping jaws below.

Press FIRE to leap.

9 - TUNE IN

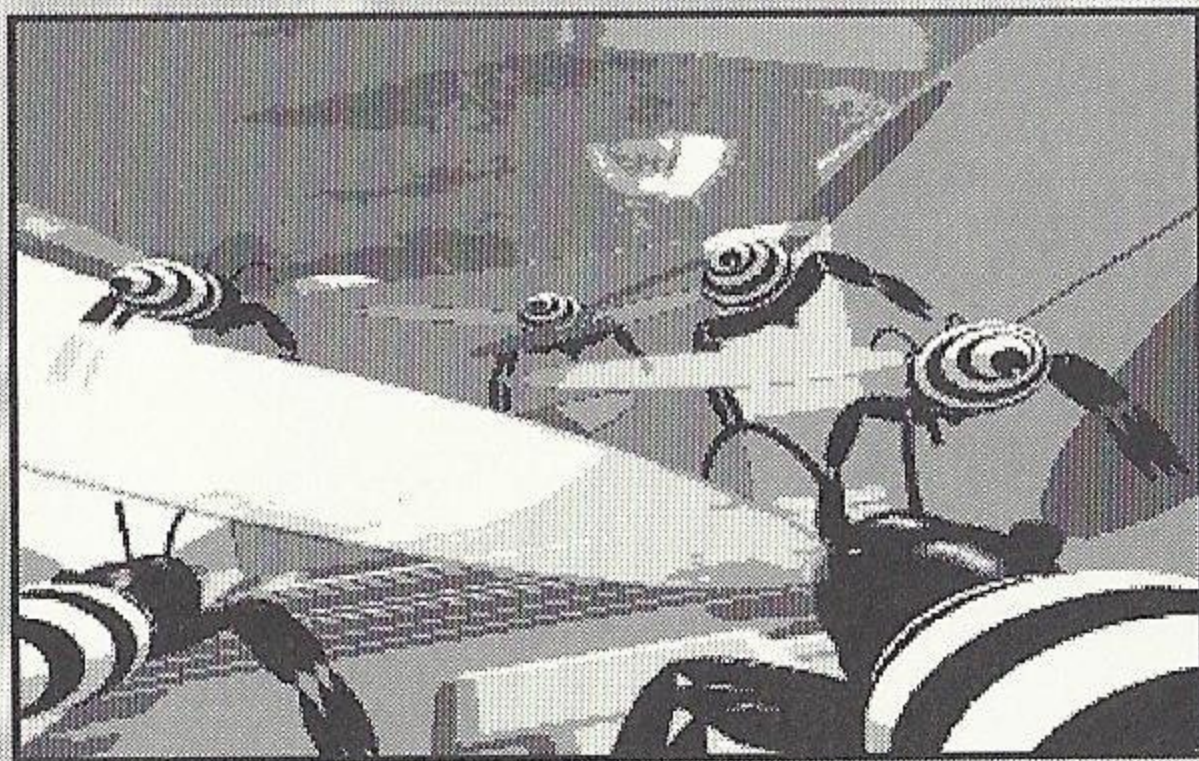


In this section you have control of a Virtual Keyboard. A tune plays and you must repeat it exactly to move on.

- LEFT - HIGHLIGHT KEY TO THE LEFT
- RIGHT - HIGHLIGHT KEY TO THE RIGHT
- FIRE - PLAY KEY

Don't take too long, Big Red is on the way...

10 - THE STING



The maze contains deadly Cyberbees. You must guide them to their doom so that you can pass safely. There are three colored icons alongside the maze (and an OK icon). These correspond to similarly colored doors within the maze. As each icon is activated its corresponding doors open or close.

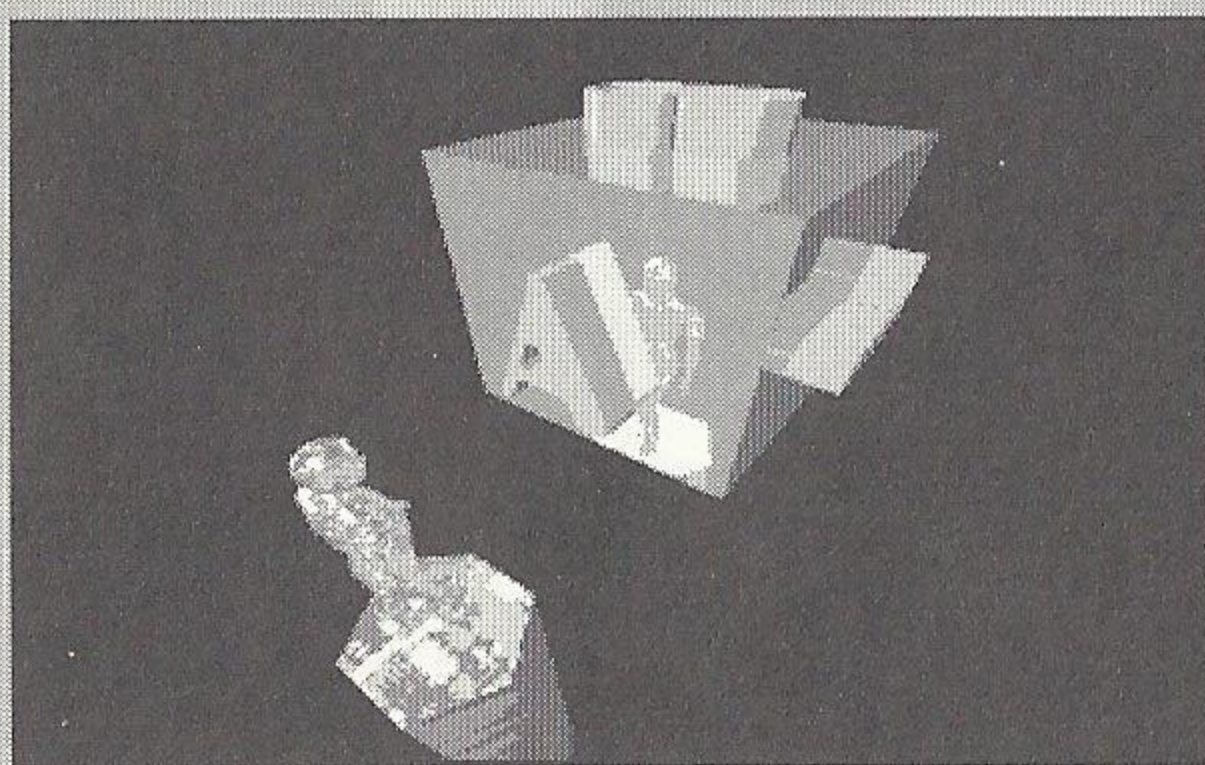
Use UP and DOWN to highlight an icon and use FIRE to select it. As it is selected, its doors will all open or close (open ones close, closed ones open).

When you are satisfied that you have oriented the doors correctly to send the Cyberbees to their deaths, select the OK icon and the bees will be guided into the maze.

Of course, if you choose incorrectly the Cyberbees will be released...

But don't take too long...

11 - SPIN OUT



Use LEFT, RIGHT, UP and DOWN to rotate the cube.

You must solve this final puzzle to progress to the next level.

Don't make any mistakes...

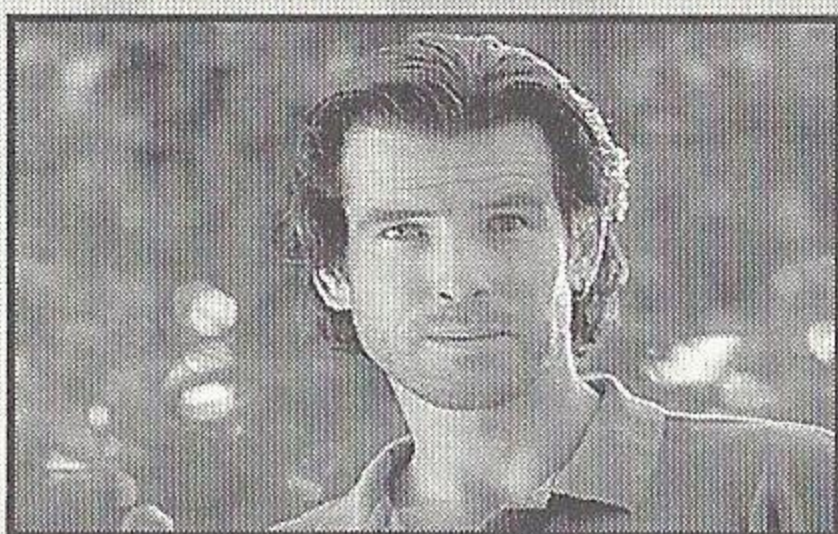
12 - GLORY ROAD



Save Peter! There's a way to reverse the direction in which the conveyor belts are travelling, but you'll have to be both brave and quick to do it. Once you've reversed the direction of the belts you must leap to Peter's rescue.

Press UP to jump in the direction you're facing.

CHARACTERS



Real World

Dr Lawrence Angelo
Researcher at Virtual Space Industries.

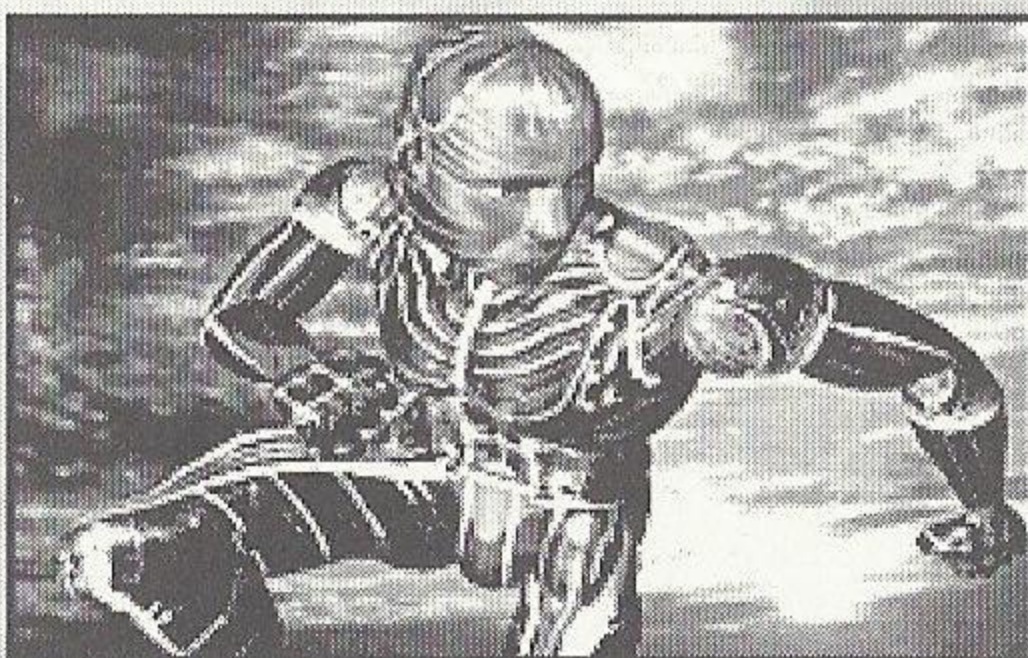


Virtual World



Real World

Jobe Smith - Cyberjobe
The Lawnmower Man™.



Virtual World



Real World

Peter Parkette
Friend of Dr Angelo and Jobe.

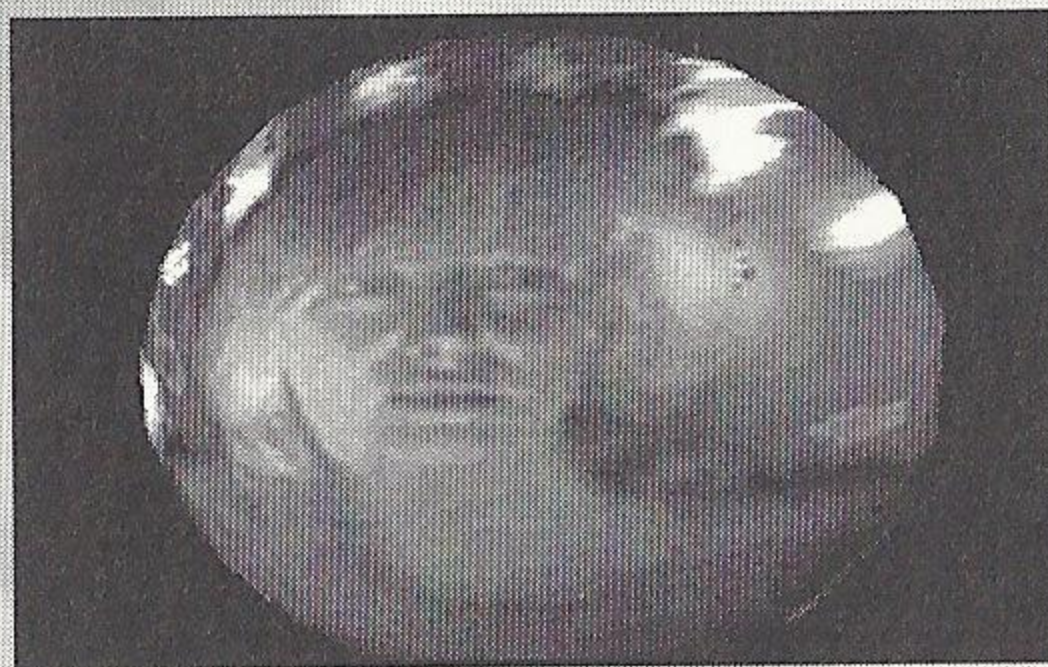


Virtual World



Real World

Carla Parkette
Peter's mother and friend of Dr Angelo.

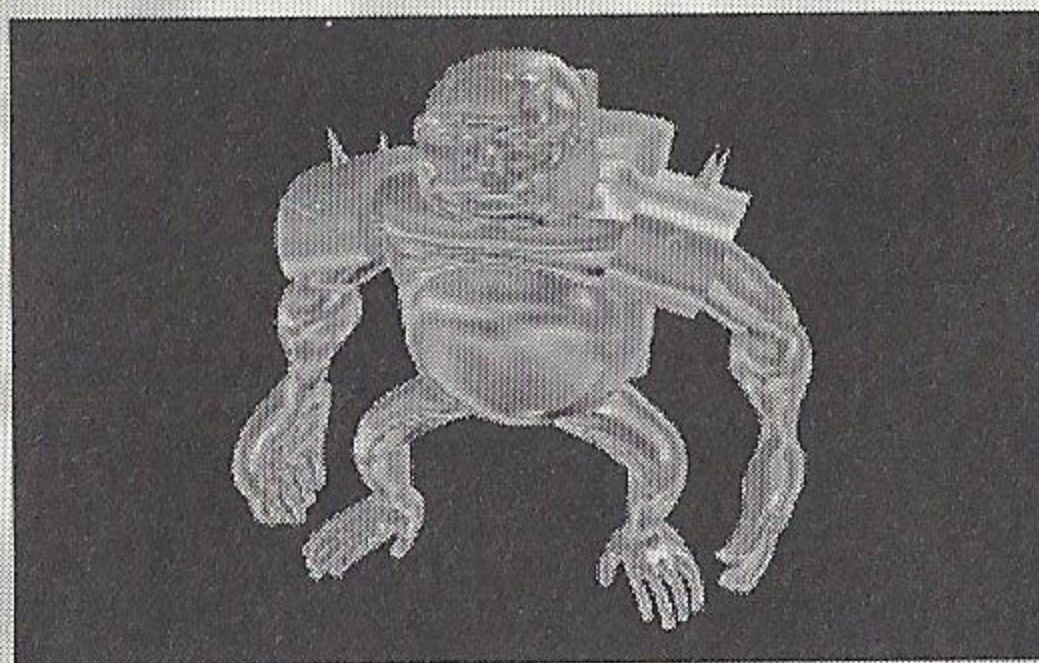


Virtual World

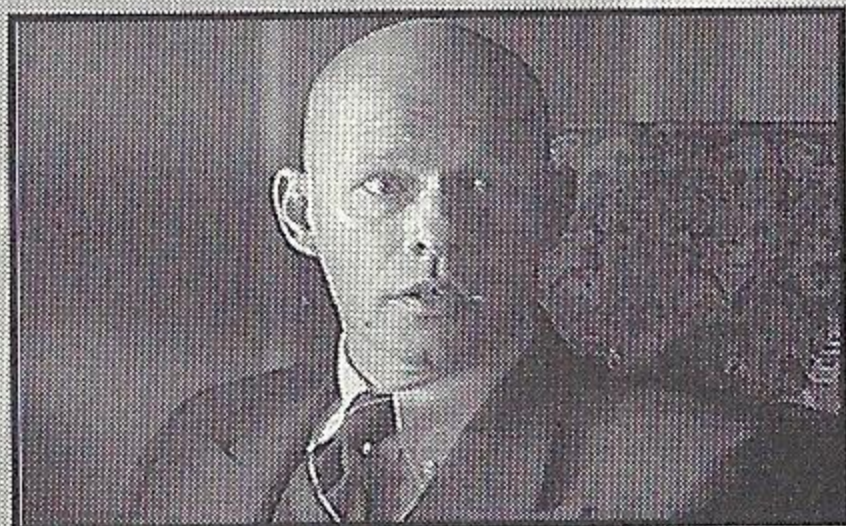


Real World

Rosco
Chimpanzee with enhanced intelligence.

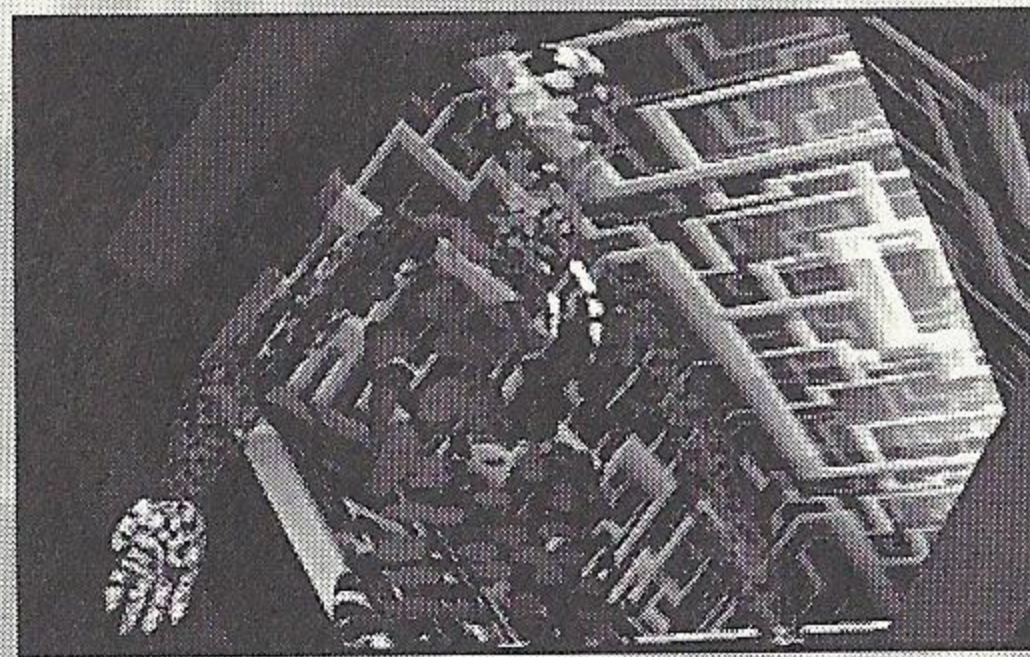


Virtual World

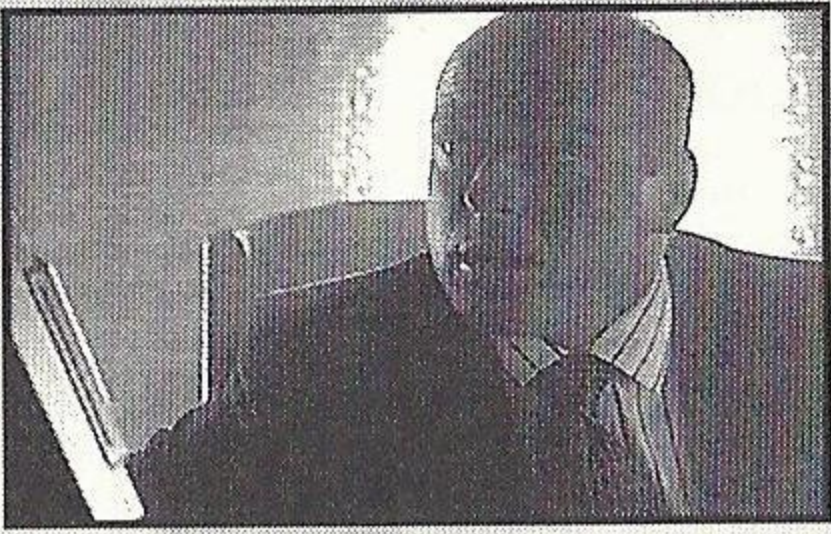


Real World

Dr Frederick Timms
Project Supervisor and Government
liaison at Virtual Space Industries.

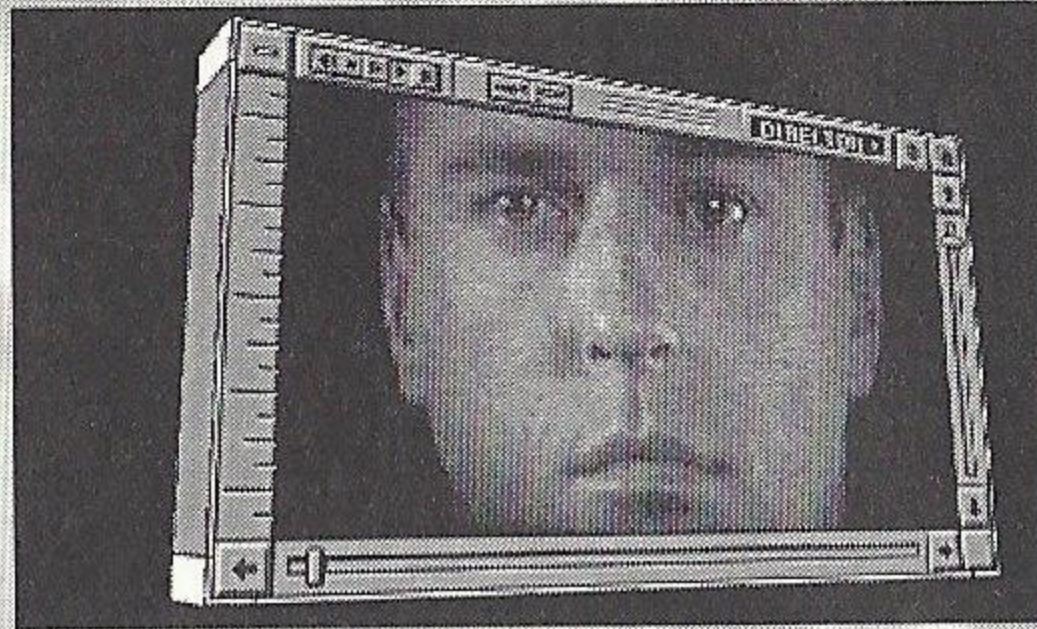


Virtual World



Real World

The Director
Runs a secret Government department known as 'The Shop'.

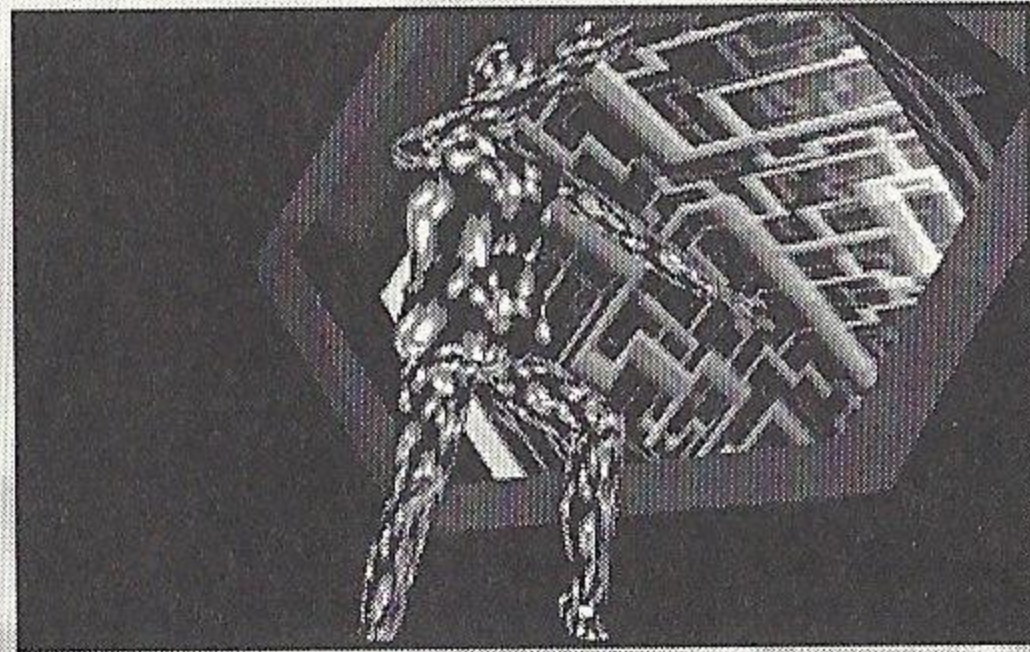


Virtual World

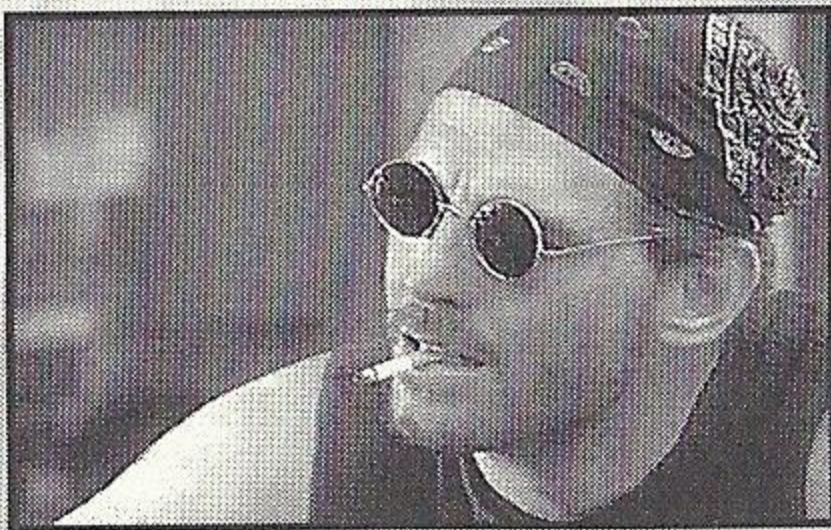


Real World

Father McKeen
Jobe's evil landlord.

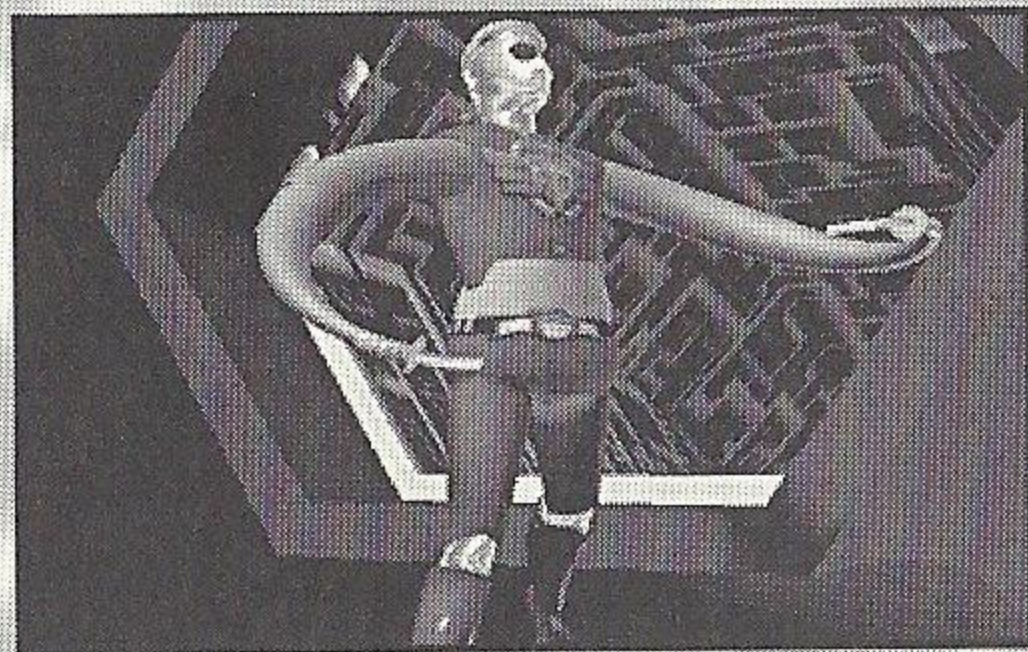


Virtual World



Real World

Jake Simpson
Works at the only gas station in town.



Virtual World

STEVE HILLAGE - BIOGRAPHY

"THE ENTITY" IS THE SOUNDTRACK TO "CYBERBOOGIE"

Steve Hillage first came to prominence as a young guitarist in the 1970's with the Psychedelic band Gong, and went on to greater success as a solo artist. As well as developing a unique set of guitar sounds and keyboard effects, together with his long-term partner Miquette Giraudy, he also became excited with the development of personal computers and the finer aspects of recording productions. After spending most of the 80's developing a solid reputation as a Record Producer, with several international hits including Simple Minds "Sons and Fascination", he re-emerged as an artist in 1990. He is also seen as one of the pioneers of ambient dance music, most notably with his own project System 7 and as a collaborator with The Orb.

Together with Miquette, he also developed his activities to incorporate film soundtracks, most notably with work on the award winning French produced feature films "URGA" (1991) and "L'enfant Lion" (1993). Being already a fan of "The Lawnmower Man™" film, he seemed a natural choice to provide music for this game. As someone who has been involved for many years with high technology, he feels that we are at the start of a whole new art-form of integrated digital music, sound, visuals and graphics.

CREDITS

Producer	Rob Henderson.
Executive Producer	Jane Cavanagh.
Director & Original Script	Fergus Mc Neill.
Additional Scripting and Storyboard	Mark Eyles.
Incidental Music	Fergus Mc Neill, Russell Dunham.

Soundtrack "The Entity" composed and performed by Steve Hillage in section entitled 'Cyber Boogie'

Visualisation Engineers	Bob Plested, Glenn Broadway, Virgil Manning, Russ Dunham.
Playback Engineers	John Chasey, Steve Haggerty.
Development System	John Chasey.
Publicity	James Owens, Colin Brown.
Testing	Chris Lipscombe, Jim Loftus, Matt Sansam.
Budget Control	David Crump, Mark Hancox, Ruth Cassidy.
Artwork/Manual Design	The Producers, Kee Scott Associates.
Artwork Co-ordinators	James Owens, Nicky Pancoust, Colin Brown.
Administration	Stephanie Railton, Katie Blundell.

Cyberjobe appears courtesy of Angel Studios

Special thanks to: Edward Simons, Peter McRae, Catherine, Sophie and Jackie at Allied Vision, Mike Limber, Lisa Sontag and everyone else at Angel Studios, Special thanks to Chris Garske and Steve Ackrich at Sega of America. Derek dela Fuente, Andy Butcher, Freehand, Adris and Wavefront UK.



ORLANDO

Technical Support

USA - Time Warner Interactive on (408) 434 3950

EUROPE - Time Warner Interactive on 44 (0)604 604060

90 DAY LIMITED WARRANTY

Time Warner Interactive warrants to the original purchaser of this software product that the medium on which the computer program is recorded is free from defects in material and workmanship for a period of ninety (90) days from the date of purchase. Time Warner Interactive agrees to repair or replace, at its option, free of charge, any Time Warner Interactive software product. Before any returns are accepted you must call our warranty department (408) 473-9400 for a return authorization number. You may then return the product postage paid, together with the return authorization number, sales slip or similar proof of purchase.

THIS WARRANTY IS NOT APPLICABLE TO NORMAL WEAR AND TEAR. THIS WARRANTY SHALL NOT BE APPLICABLE IF A DEFECT ARISES OUT OF ABUSE, UNREASONABLE USE, MISTREATMENT OR NEGLIGENCE OF THE SOFTWARE PRODUCT. THIS WARRANTY IS IN LIEU OF ALL OTHER WARRANTIES, WHETHER ORAL OR WRITTEN, EXPRESS OR IMPLIED, ANY IMPLIED WARRANTIES OF MERCHANTABILITY AND FITNESS FOR A PARTICULAR PURPOSE ARE HEREBY EXCLUDED. THIS WARRANTY IS LIMITED TO THE 90 DAY PERIOD DESCRIBED ABOVE AND IN NO EVENT WILL TIME WARNER INTERACTIVE BE LIABLE FOR CONSEQUENTIAL OR INCIDENTAL DAMAGES RESULTING FROM THE BREACH OF ANY EXPRESS OR IMPLIED WARRANTIES RELATING TO THE SOFTWARE PRODUCT.

The provisions of this warranty are valid in the United States only. Some states do not allow limitations on how long an implied warranty lasts or exclusion of consequential or incidental damages, so the above limitations and exclusion may not apply to you. This warranty gives you specific legal rights, and you may also have other rights which vary from state to state. Address all correspondence regarding this Time Warner Interactive game to:

**Time Warner Interactive Warranty Department, P.O. Box 360782
Milpitas, CA 95036-0782**

REPAIRS AFTER EXPIRATION OF WARRANTY: If your Time Warner Interactive game cartridge develops problems after the 90-day warranty period, you may contact Time Warner Interactive at 1-408-473-9400. If the Time Warner Interactive customer service technician is unable to solve the problem by phone, they will provide you with a RETURN MATERIAL AUTHORIZATION number (RMA). Write this number on the outside of the package used to return your defective game cartridge to Time Warner Interactive. Return the defective game cartridge, freight prepaid, to Time Warner Interactive at the address below. Enclose a check or money order for \$12.00, payable to "Time Warner Interactive." Time Warner Interactive will, at its option, subject to the conditions above, repair the cartridge or replace it with a new or repaired cartridge. If replacement cartridges are not available, the defective will be returned and the \$12.00 payment refunded.

**Time Warner Interactive, Inc.
Attn: Customer Service
675 Sycamore Drive
Milpitas, CA 95035-0782**

STATUTORY RIGHTS

The warranty and limitations described above, in no way alter or affect your statutory rights.

Unless indicated otherwise, all software and documentation is © **SCi (SALES CURVE INTERACTIVE) LTD.**, all rights reserved.

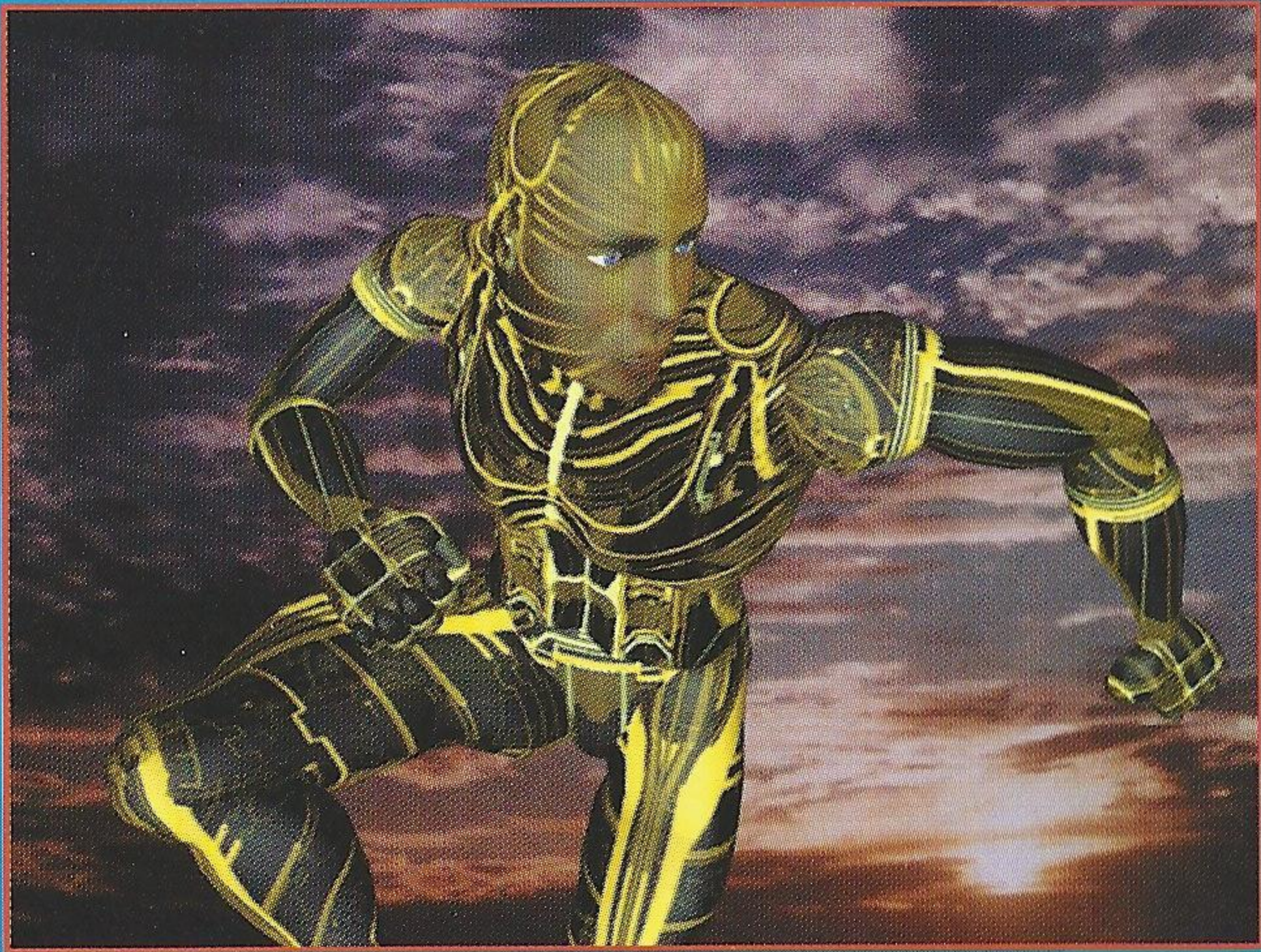
NOTICE

SCi (SALES CURVE INTERACTIVE) INC. RESERVES THE RIGHT TO MAKE IMPROVEMENTS IN THE PRODUCT DESCRIBED IN THIS MANUAL AT ANY TIME AND WITHOUT NOTICE.

THIS MANUAL, AND THE SOFTWARE DESCRIBED IN THIS MANUAL, IS COPYRIGHTED. ALL RIGHTS ARE RESERVED. NO PART OF THIS MANUAL OR THE DESCRIBED SOFTWARE MAY BE COPIED, REPRODUCED, TRANSLATED, OR REDUCED TO ANY ELECTRONIC MEDIUM OR MACHINE-READABLE FORM WITHOUT THE PRIOR WRITTEN CONSENT OF **SCi (SALES CURVE INTERACTIVE) LTD.**

PATENTS:

U.S. #'s 4,442,486/4,454,594/ 4,462,076/
4,026,555; Europe # 80244; Canada #'s
1,183,276/1,082,351; Hong Kong # 88-
4302; Germany # 2,609,826; Singapore #
88-155; U.K. # 1,535,999; France #
1,607,029; Japan #'s 1,632,396/82-205605
(Pending).



SEGA AND SEGA CD ARE TRADEMARKS
OF SEGA ENTERPRISES, LTD.
ALL RIGHTS RESERVED

THE VIDEOGAME RATING COUNCIL, ITS RATING SYSTEM, SYMBOLS AND
INDICIA ARE TRADEMARKS OF SEGA OF AMERICA, INC. © 1993 SEGA.

THE LAWNMOWER MAN™ © 1994 SCi (SALES CURVE INTERACTIVE) Inc.
WASHINGTON SQUARE, 330 WASHINGTON BOULEVARD, SUITE 700,
MARINA DEL REY, CALIFORNIA 90292.

DISTRIBUTED EXCLUSIVELY FOR SCi (SALES CURVE INTERACTIVE) Ltd.
BY TIME WARNER INTERACTIVE, Inc. 675 SYCAMORE DRIVE, MILPITAS, CA 95035.

Manufactured in the U.S.A.