



**STAFF**

**Chief Programmer**

**Toru Kujirai**

## Programmers

Hironobu Tsujikawa

Masayoshi Iwai

Kazunori Masuda

Yukinori Kaneko

Hajime Take

Takuo Kaneko



**Chief Designer**

**Norihito Omoda**

**Designers**

**Masakazu Yanagida**

**Satoshi Fujinuma**

**Hiroko Katoh**

**Kazuya Suzuki**



**Planner**

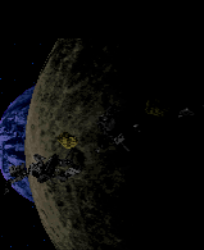
**Yasuhiro Nishimoto**

**Music & Effects**

**Naoshi Kunisawa**

**Special Thanks**

**Hiroshi Aso**



Hisao Oguchi

Masayuki Hasegawa


Nobutaka Arii

Jun Kasahara

Yoshimi Fujii

Hiroyuki Kashima

Yuuri Ohtake



**Producer**

**Makoto Oshitani**

**Keisuke Chiwata**

**Director**

**Katsuhiro Hasegawa**




**Character Design**

**Hajime Katoki**

**Program Technical Advisor**

**Yoshihiro Sonoda**

A composite image showing the Earth on the left and the Moon on the right, set against a black background with small white stars. The Earth is blue and white, while the Moon is grey and cratered.

**Design Technical Advisor**

**Hiroshi Yoshida**

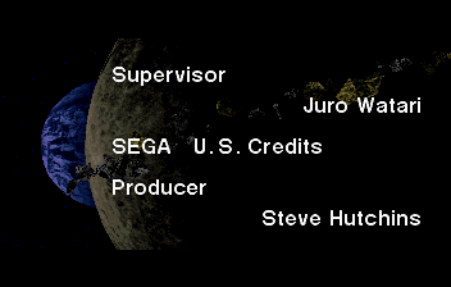
**Kohichi Ozaki**

**Nobukazu Naruke**

**Music Advisor**

**Kentaro Koyama**



A space-themed background featuring a view of Earth from the Moon. The Earth is on the left, showing blue oceans and white clouds. The Moon's surface is in the foreground, showing a grey, cratered terrain. The background is a dark, starry space.

**Supervisor**

**Juro Watari**

**SEGA U.S. Credits**

**Producer**

**Steve Hutchins**

A composite image of Earth and the Moon in space. The Earth is on the left, showing blue oceans and white clouds. The Moon is on the right, showing its grey, cratered surface. The background is black with small white stars.

**SOJ Liaison**

**Ryoichi Hasegawa**

**Product Manager**

**Andrew Stein**

**Asst. Producer**

**Michael S. Jablonn**

The background of the slide is a composite image of Earth and the Moon. On the left, a portion of the Earth is visible, showing blue oceans and white clouds. To its right, the Moon is shown in a larger, more detailed view, displaying its grey, cratered surface. The background is a dark space filled with numerous small, blue-tinted stars.

**Lead Tester**

**Tony Lynch**

**Assistant Leads**

**Lance Nelson**

**Fred Selker**

**Alan Tan**

The background of the slide is a dark space filled with small, distant stars. On the left side, a portion of the Earth is visible, showing its blue oceans and white clouds. To the right of the Earth, a large, detailed view of the Moon's surface is shown, with its characteristic grey, cratered terrain. The text is overlaid on this scene in a white, sans-serif font.

Thanks To

Granillo, Stolar, Taka,  
Lindstrom & SEEDY

Reprogrammed by

CSK Research Institute Corp.  
(CRI)

PRESENTED BY  
**SEGA**™