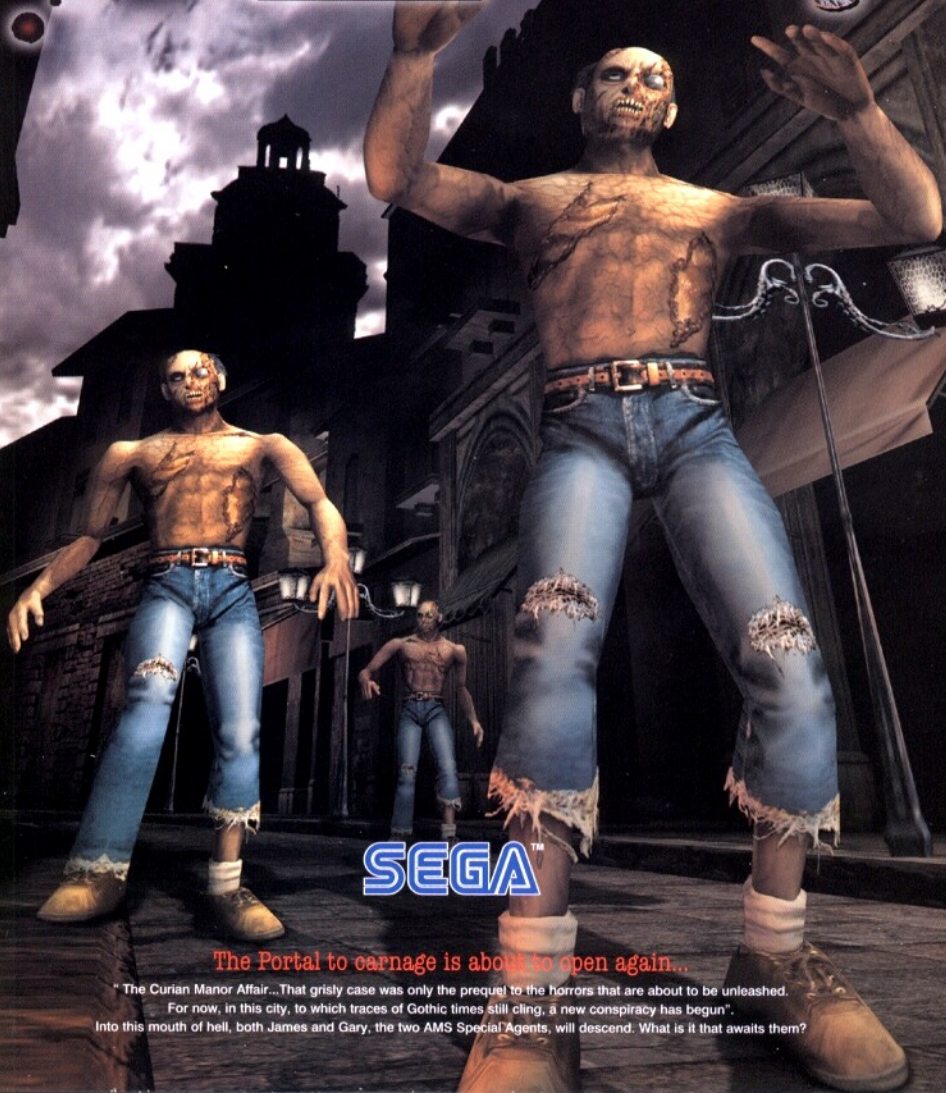
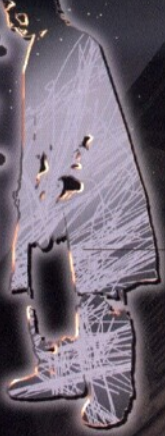


# THE HOUSE OF DEAD 2

TM



SEGA™

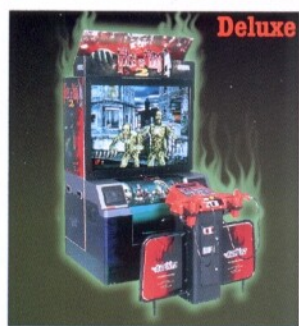
The Portal to carnage is about to open again...

"The Curian Manor Affair...That grisly case was only the prequel to the horrors that are about to be unleashed.

For now, in this city, to which traces of Gothic times still cling, a new conspiracy has begun".

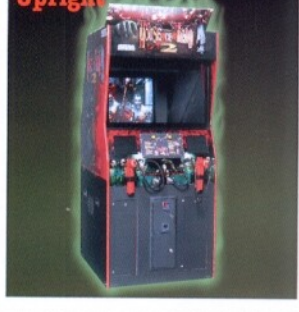
Into this mouth of hell, both James and Gary, the two AMS Special Agents, will descend. What is it that awaits them?

## Deluxe



A 60" inch big screen that guarantees to draw the crowd.  
W: 1,140mm D: 1,646mm H: 2,264mm  
Weight: 242kg Power: AC100V  
Monitor: 50 inch projection TV

## Upright



Saves space without compromising on NAOMI's functionality.  
W: 800mm D: 890mm H: 2,072mm  
Weight: 192kg Power: AC100V  
Monitor: 29 inch monitor

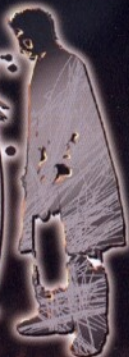
## Super Deluxe



Larger than life visuals and sound effects coupled with a theatre cabinet provide the realistic anticipation of actually being in the movie theatres.

W: 1,270mm D: 2,460mm H: 2,164mm  
Weight: 402kg Power: AC100V  
Monitor: 50 inch projection TV

# THE HOUSE OF THE DEAD 2



The second installment of the hugely popular shooting game "THE HOUSE OF THE DEAD" challenges players to find their way through the city and to the heart of the mystery while taking on a relentless wave of Zombies.

A well-fleshed story with a fine-tuned gaming balance, horror staging that one-ups the original, and ensures repeat enjoyment, all conspire to take the game above and beyond the terrifying memories of the original.

### HOW TO PLAY

- Deposit coin and start game with the START button. Two-player mode is also available.
- Use the gun to dispatch the attacking zombies. Shoot outside the screen to re-load.
- Shoot boxes and doors to find hidden items.
- Scores are displayed after each stage is cleared.
- "Continues" are available.

### • Highly varied situations keeping the players attention!

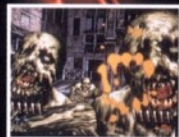
Deadly struggles played out against the backdrop of streets redolent with medieval ambience, Venetian scenery, and contemporary high-rises, two-player co-operative gaming allows a wider range of players to participate.

### • A total of six stages, and with more options in the story than in the original!

Players reactions affect later events, including the showdown site as well as the Big Boss's attack methods. Variations and event selections are too numerous to be exhausted by several plays, inspiring repeat play from a number of gamers.

### • The incredible graphics are made possible by the cutting-edge GC motherboard "NAOMI"

Highly articulated backgrounds, underwater battle scenes, and other visuals are unleashed. In addition, gripping sound effects and voice overs ensure audience interest, along with guaranteed contribution to the dynamic atmosphere of the arcade itself.



## MAKE YOUR SACRIFICE

# SEGA™

SEGA AMUSEMENTS EUROPE, Ltd.

Unit 2, Industrial Estate, Leigh Close, New Malden, Surrey KT3 3NL, England  
Tel: 44- (0) 181-336-2256 Fax: 44- (0) 181-336-1715