

THE MAZE OF THE KINGS

IT'S TIME FOR THE WORLD TO
CONFRONT ITS INNER MOST FEARS!!!
LEARN THE TRUE STRENGTH AND
POWER OF THE ANCIENT PHARAOHS!!!

WANTED

ACTION HERO ARCHAEOLOGIST TREASURE HUNTER!
SINGLE PERSON WHO DESIRES ADVENTUROUS POSITION,
WOULD IDEALLY SUIT BORED MUSEUM CURATOR LOOKING
FOR SOME EXTRA JOB SATISFACTION. MUST BE SUAVE,
ATTRACTIVE AND LIKE TO WEAR KHAKI SHORTS AND
WALKING BOOTS. MUST BE WILLING TO TRAVEL THE
WORLD IN PARTICULAR HOT ARID CLIMATES.
A PASSION FOR EGYPTOLOGY AND A THOROUGH
KNOWLEDGE OF ANCIENT EGYPTIAN TEXT IS ESSENTIAL.
MUST BE FULLY PROFICIENT IN HAND TO HAND MARTIAL
ART COMBAT AND A COMPETENT WEAPONS EXPERT.
PERSONS AFRAID OF SNAKES, SPIDERS, ASPES, HELLENIC
HOUNDS, MUMMIES AND DEAD SOLDIERS OF THE
PHARAOHS EMPIRE NEED NOT APPLY. MUST BE
WILLING TO PROVIDE OWN LIFE ASSURANCE.

BENEFITS INCLUDE TRAVELLING TO EXOTIC
CONTINENTS, VISITING THE PYRAMIDS,
AS MANY DIAMONDS, RUBIES AND EMERALDS
THAT YOU CAN FIT INTO YOUR POCKETS AND
LOTS OF GOLD.

INTERESTED?
PLEASE APPLY IN WRITING WITH A RECENT PHOTOGRAPH TO

SEGA

©SEGA/Hitmaker 2002

Sega Amusements Europe Ltd
Suite 3a, Oaks House,
12 - 22 West Street, Epsom,
Surrey, United Kingdom, KT18 7RG
Tel: +44 (0) 1372 731820. Fax: +44 (0) 1372 731849

www.sega-amusements.co.uk

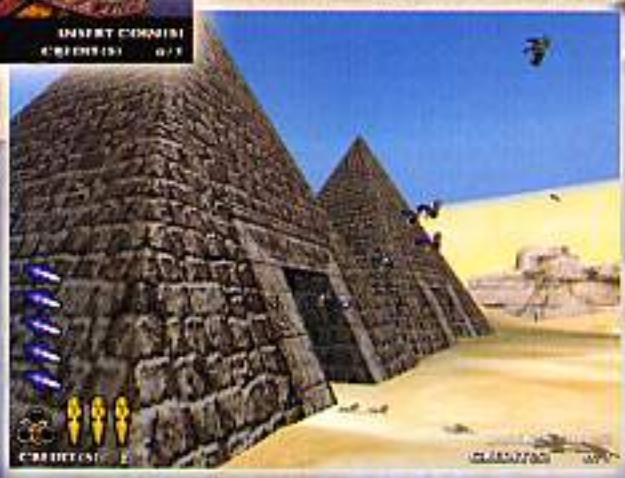
NAOMI™

ATEI 2002 brochure - actual
game details may alter on
final production software

STORY

The "Maze of the Kings" is a terrifying and exciting shooting game in which you take on the role of the intrepid action hero, Archaeological Treasure Hunter.

You travel through rivers, across deserts and explore inside vast Pyramids whilst in search of the "Worlds Lost Treasure". This is a perilous journey that is fraught with many dangers from the evil guardians of the lost empire who appear in the form of mummies and sinister creatures..... You use a Magical Cane to shoot Light, Sparks or Fire to fend off and kill these evil incarnations.



RANDOM MAP SYSTEM

The first time ever for a shooting game! The story unfolds randomly. There are 3 to 4 areas to clear in each stage and a total of 4 stages.

These areas will be randomly selected by the game from a list of more than 24 areas, so that each game holds new and exiting discoveries for the player. Players can win repeatedly, each time building on their score.

The story develops in different directions from an early stage of the game, allowing even beginners to enjoy the different plots and sub plots. The creatures insane expressions and rapid movements invite you into a world of fantasy and fear, where the story develops at a rapid pace. The game creates fear and terror with realistic graphics and a story filled with puzzles - just as if you'd been transported back in time to Ancient Egypt and the days of the Pharaohs.

MAGICAL CANE

The weapon of choice for any aspiring Archaeological Treasure Hunter is a Magical Cane to fend off the evil forces of darkness. This Magical Cane has a choice of effects. At the beginning of the game the player can choose 1 effect from a choice of 3 magical effects:

LIGHT - The damage created by this effect is low, but the player is able to use it 8 times before re-loading.

SPARK - The basic effect in this game.

FIRE - This is the most powerful effect, but can only be used sparingly before having to re-load.

FEATURES:

- * 2 PLAYER SHOOTING GAME.
- * EXCHANGE SYSTEM ALLOWS PLAYERS TO SWAP LIVES.
- * USE THE MAGIC CANE TO SHOOT THE ENEMY.
- * REVOLUTIONARY RANDOM MAP SYSTEM ENSURE LIMITLESS VARIETY TO THE GAME.
- * SHOOT OFF SCREEN TO RELOAD.
- * CONTINUE FEATURE KEEPS THE ACTION HOT
- * AVAILABLE IN HIGH RESOLUTION 50" DLX AND 29" NAOMI UNIVERSAL CABINETS.

