

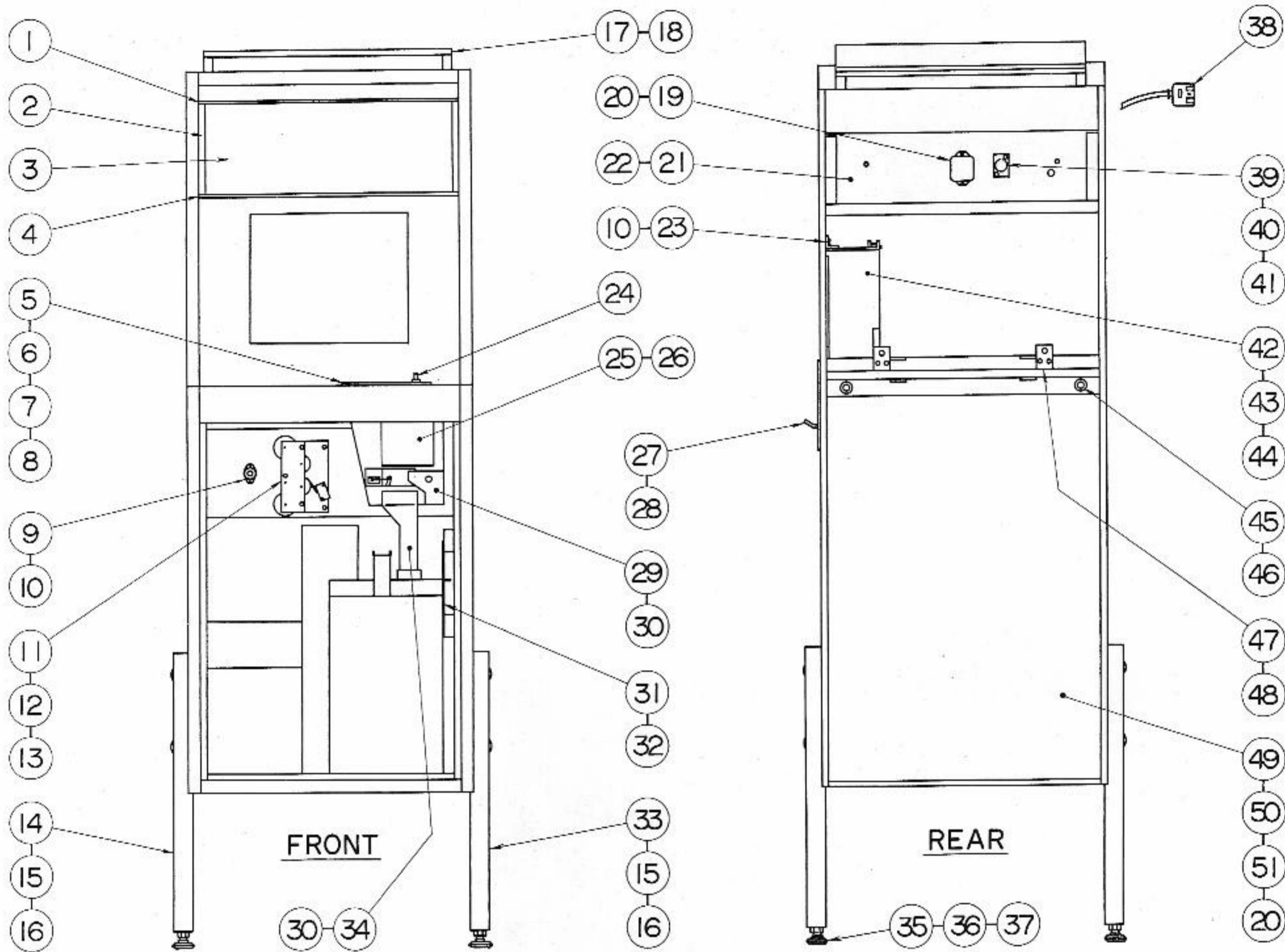
SEGA

# RIFLEMAN

**PARTS CATALOG**

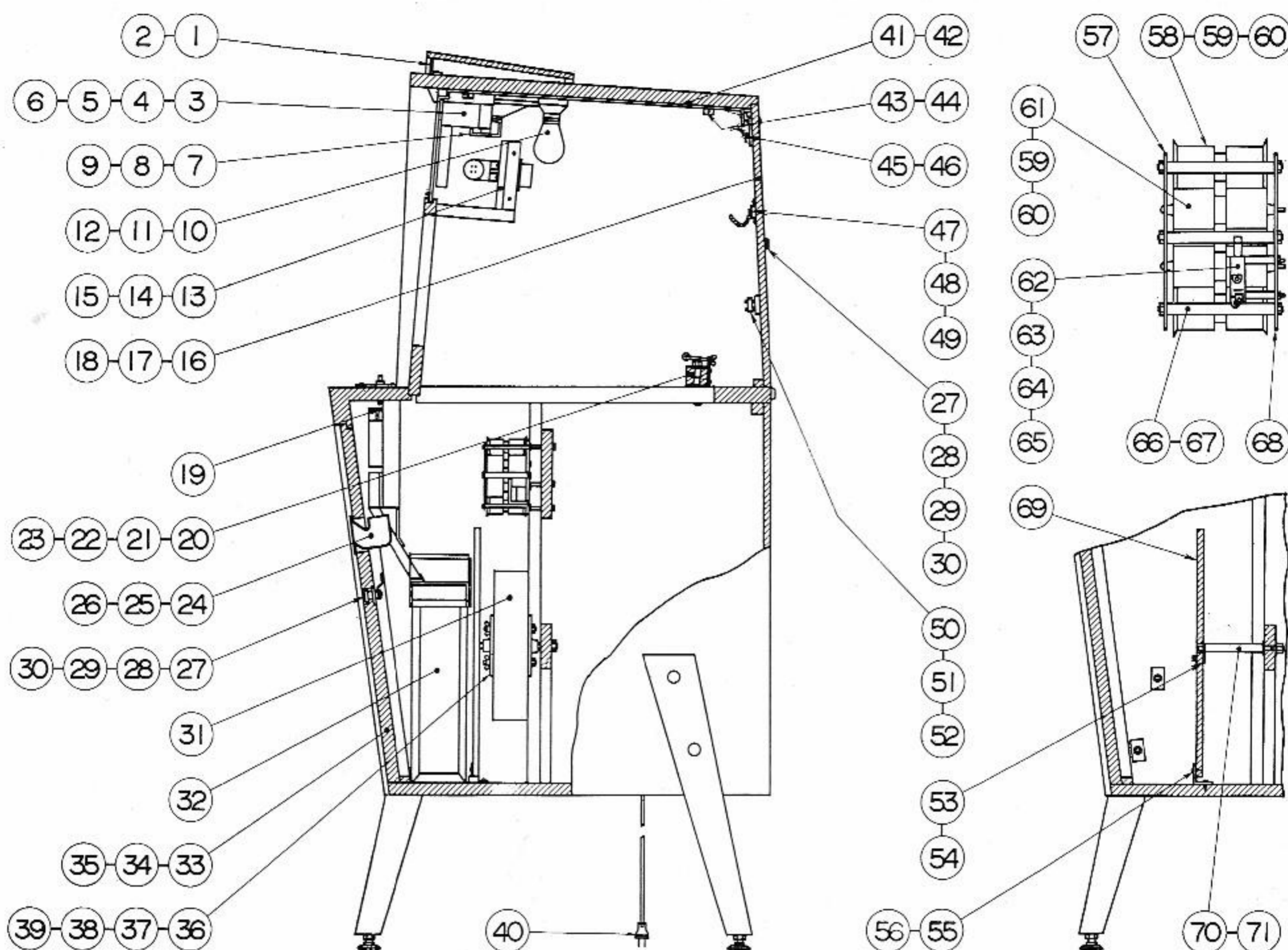
**SEGA**

OFFERS YOU THE UNBEATABLE COMBINATION OF QUALITY AND PLAY APPEAL IN AMUSEMENT GAMES

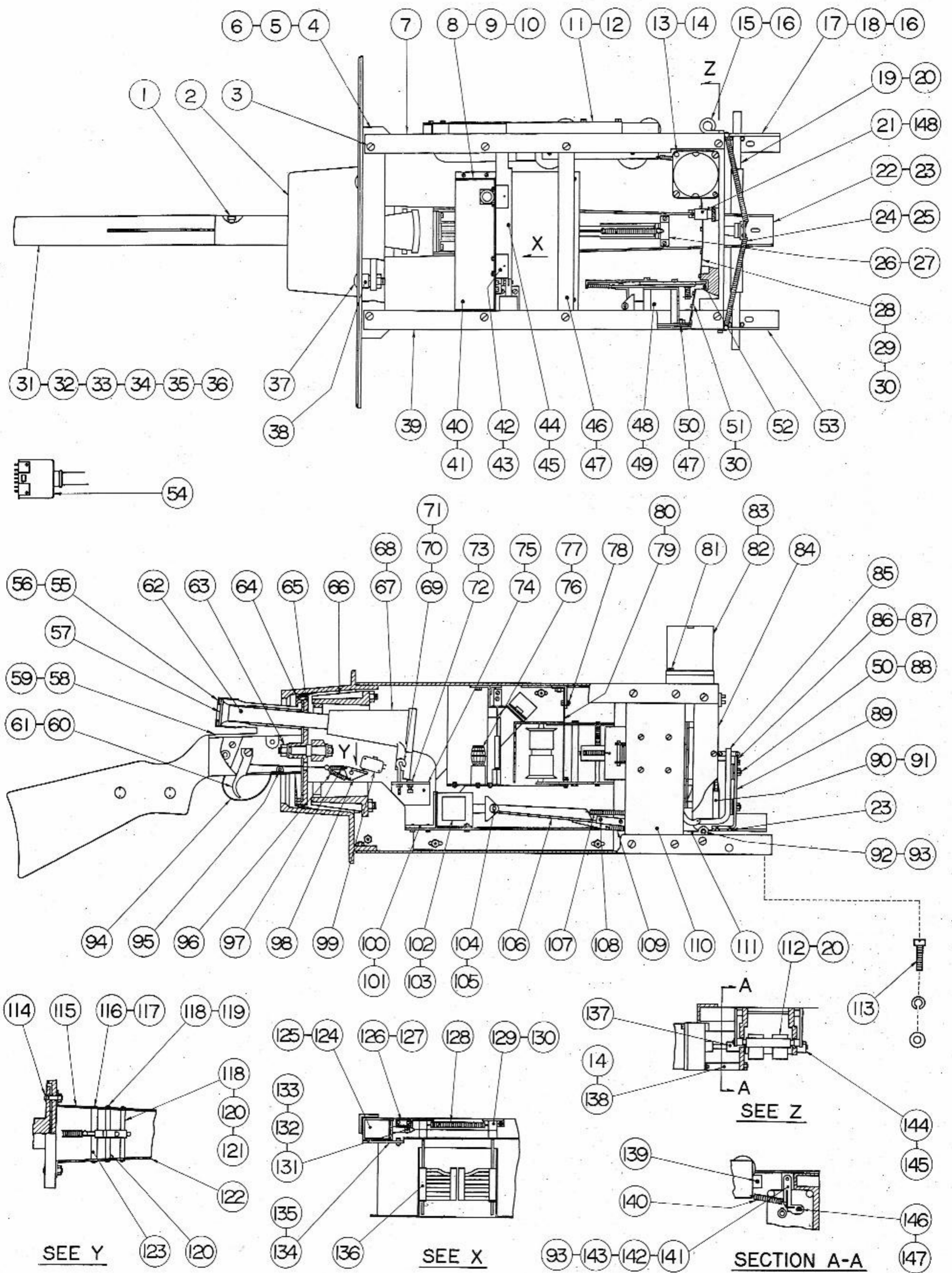


Item	Part No.	Description	Item	Part No.	Description	Item	Part No.	Description
1	RM-1038	Window Sash 459	19	91000	Ballast Coil, 100V 10W, 50% <sub>s</sub>	36	M-163-4	Leg Adjuster
2	RM-1039	Window Sash 158	20	122-004	Wood Screw, R. H. Phill. 3.5×16	37	122-111	Wood Screw, F. H. Phill. 3.1×20
3	RM-1027	Window Glass	21	RM-1013	Fluorescent Light Plate		133-006	Hex. Nut 3/8-16
4	RM-1037	Window Sash	22	122-097	Wood Screw, R. H. Phill. 3.8×32	38	S-91015-2	Plug, 12P
5	RM-1003	Coin Chute Unit Bracket		144-078	Flat Washer M4	39	S-90244	Starter, Fluorescent Bayonet Type, FG-1P
6	RM-1004	Coin Entry Plate, Base	23	RM-1042	Door Assembly	40	S-90264	Socket, Fluorescent, Starter Bayonet Type
7	RM-1005	Denomination Plate, ¥20	24	RM-1009	Reject Button Assembly	41	122-086	Wood Screw, R. H. Phill. 3.5×20
8	111-288	Carriage Bolt, Chromed M5×32	25	CC-2025	Coin Chute Bracket Assembly Two Coin Type	42	RM-1014	Score Paper Chute
	133-033	Hex. Nut M5	26	111-201	M. Screw, C. H. M4×6	43	RM-1041	Score Paper Holder
	144-105	Flat Washer M5		144-078	Flat Washer M4	44	122-004	Wood Screw, R. H. Phill. 3.5×16
	144-149	Lock Washer, Ext. M5	27	RM-1040	Front Ornament Plate		133-017	Hex. Nut M4
9	S-91348	Switch, Push Button, Baby Type	28	111-288	Carriage Bolt, Chromed M5×32		144-078	Flat Washer M4
10	122-064	Wood Screw, R. H. Phill. 3.1×13		133-033	Hex. Nut M5		144-167	Lock Washer, Ext. M4
11	RM-1018	Paper Roller Assembly		144-105	Flat Washer M5	45	S-80367	Rubber Foot 24×10
12	RM-1026	Spacer Tube		144-149	Lock Washer, Ext. M5	46	122-004	Wood Screw, R. H. Phill. 3.5×16
13	111-499	M. Screw, C. H. M4×50	29	RM-1008	Reject Chute		144-070	Flat Washer M3.5
	133-017	Hex. Nut M4	30	111-467	M. Screw, C. H. M4×5	47	RM-1030	Mechanism Mounting Bracket
	144-078	Flat Washer M4		144-078	Flat Washer M4	48	122-024	Wood Screw, R. H. Phill. 3.8×16
14	RM-1001-G	Leg, Right		144-167	Lock Washer, Ext. M4	49	RM-1001-A	Wooden Cabinet
15	RM-1001-Q	Washer Plate	31	RM-1006	Cash Box Lock Bracket	50	S-90591	Clamp, Cord, Plastic, 5 m/m I.D.
16	133-027	Hex. Nut M10	32	122-065	Wood Screw, F. H. Phill 3.5×16	51	S-90181	Clamp, Cord, Plastic, 8 m/m I.D.
	144-069	Spring Washer M10 (#2)	33	RM-1001-F	Leg, Left			
	111-546	Carriage Bolt, Chromed M10×65	34	RM-1007	Lower Coin Chute			
17	RM-1001-J	Speaker Cover Plate	35	K-106-1	Leg Adjuster Nut Plate			
18	122-118	Wood Screw, O. H. Phill. 3.1×16						

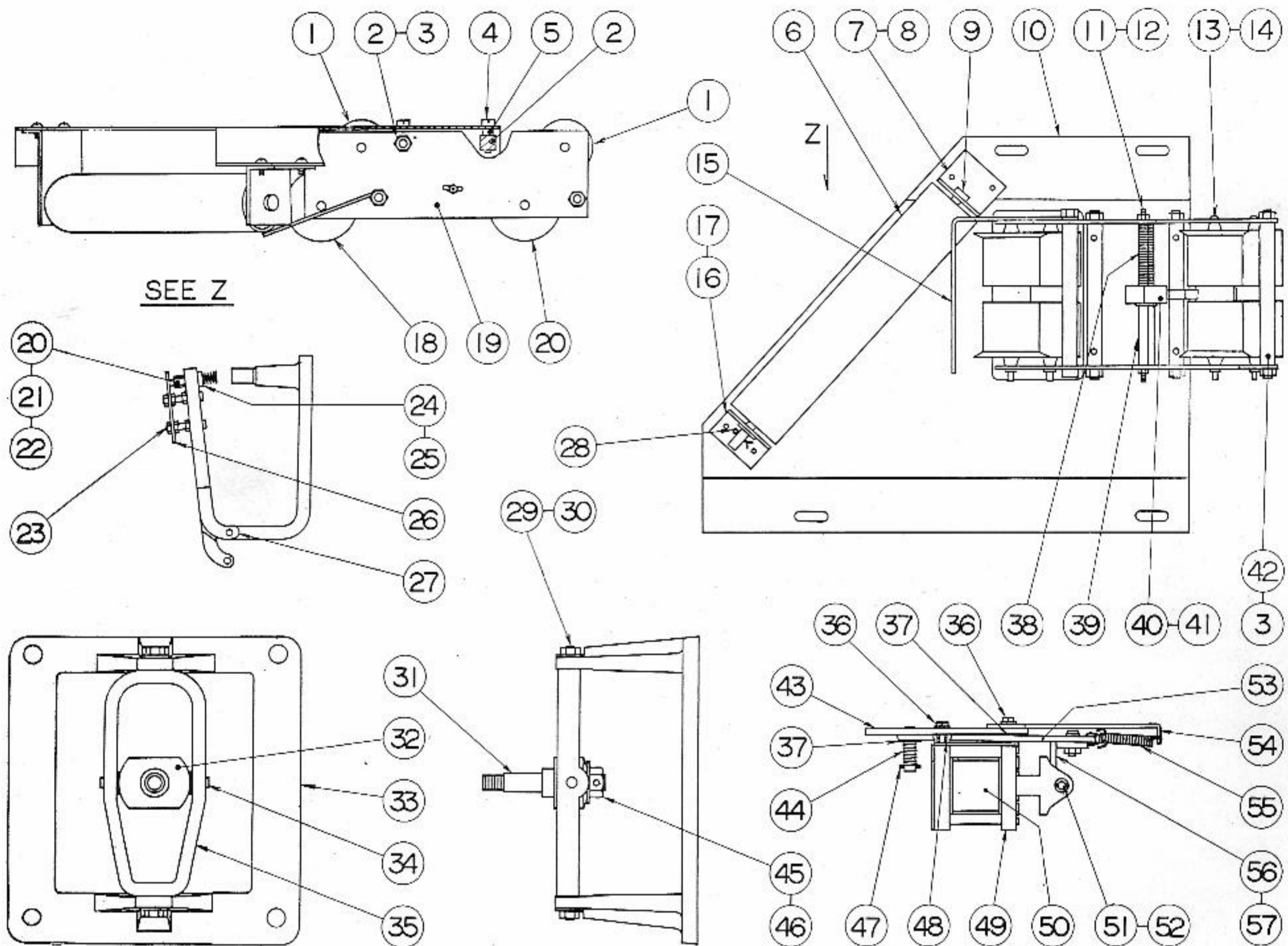
M.....Machine      R.....Round      H.....Head  
 F.....Flat            C.....Cheese      O.....Oval  
 Hex.....Hexagon      Ext.....External      Phill. ....Phillips



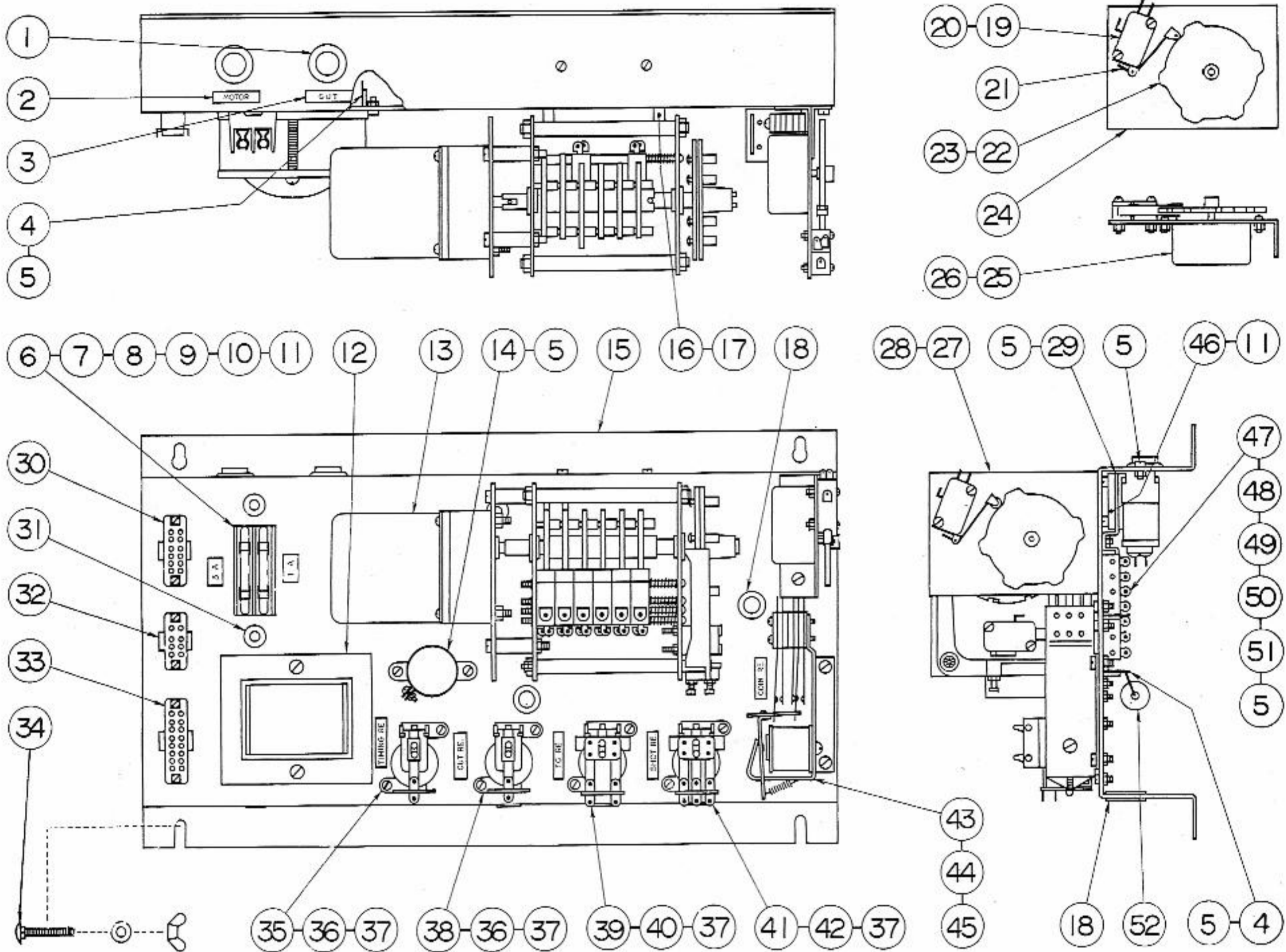
Item	Part No.	Description	Item	Part No.	Description	Item	part No.	Description
1	RM-1001-H	Speaker Cover	144-124	Flat Washer, Special	133-033	Hex. Nut M5		
2	122-080	Wood Screw, R. H. Phill. 3.1×16	144-132	Spring Washer M8 (#2)	47	RM-1045	Limit Bracket	
3	RM-1033	Light Box Assembly	24	AF-2507	Reject Cup	48	RM-1046	Limit Chain
4	S-90710-1	Socket, Miniature Screw Table Type	25	AF-2508	Retainer Plate	49	122-024	Wood Screw, R. H. Phill. 3.8×16
5	S-91345	Bulb, Miniature Screw Type Transparent 110V, 5W	26	111-197	M. Screw, C. H. M3×14	133-017	Hex. Nut M4	
6	122-004	Wood Screw, R. H. Phill. 3.5×16	122-064	Wood Screw, R. H. Phill. 3.1×13	144-078	Flat Washer M4		
7	S-91359	Speaker, 19 cm×12 cm, 8Ω	27	SD-1044	Locking Tongue	144-167	Lock Washer, Ext. M4	
8	S-91360	Speaker, 8.4 cm, 8Ω	28	1AB-10474-1	Ace Cylinder Lock	111-203	M. Screw, C. H. M4×10	
9	122-004	Wood Screw, R. H. Phill. 3.5×16	29	SGJ-1096-3	Lock Retainer Plate	50	RM-1031	Main Switch Bracket
10	144-078	Flat Washer M4	30	122-042	Wood Screw, R.H. Phill. 3.1×10	51	S-90834	Switch, Push Button Type
11	S-90473	Lamp Socket, Standard Screw Base Single, Table Type	144-052	Flat Washer, Special 19.5-27×1.6	52	122-064	Wood Screw, R. H. Phill. 3.1×13	
12	S-90151	Bulb, 100V 20W	31	RM-0001	Ticket	53	RM-1001-M	Paper Holder Adjust Plate
13	122-024	Wood Screw, R. H. Phill. 3.8×16	32	RM-1002	Cash Box	54	111-550	M. Screw, F.H. M5×20
14	S-90260	Socket, Fluorescent Light, Spring Type	33	RM-1001-B	Front Door	133-033	Hex. Nut M5	
15	S-90200	Fluorescent Light, 10W	34	RM-1001-D	Hinge, Long	144-105	Flat Washer M5	
16	111-201	M. Screw, C. H. M4×6	35	122-042	Wood Screw, R. H. Phill. 3.1×10	144-149	Lock Washer, Ext. M5	
17	133-045	Square Nut M4-8.5×2	122-076	Wood Screw, F. H. Phill. 3.1×10	55	RM-1001-N	Hinge	
18	144-078	Flat Washer M4	36	RM-1015	Paper Roll Casting A	56	122-074	Wood Screw, R. H. Phill. 4.1×13
19	RM-1001-C	Back Door	37	RM-1016	Paper Roll Casting B	57	RM-1020	Paper Roller Bracket, B
20	RM-1001-T	Back Door Hinge	38	RM-1017	Spacer Post	58	RM-1021	Roller, A
21	122-004	Wood Screw, R. H. Phill. 3.5×16	39	133-033	Hex. Nut M5	59	RM-1024	Shaft
22	122-065	Wood Screw, F. H. Phill. 3.5×16	144-090	Spring Washer M5 (#2)	60	133-080	Push Nut 3m/m	
23	CC-2001	Coin Chute, Rejector Type, 10Yen×1	133-048	Wing Nut M5	61	RM-1022	Roller, B	
24	RM-1012	Mechanism Mounting Bar	40	90998	Cable And Plug Assembly	62	RM-1025	Spacer Tube
25	RM-0002	Mechanism Mounting Screw	41	RM-1028	Glass Holder Bar	63	S-91342	Switch, Micro Type
26	RM-1001-Q	Washer Plate	42	111-309	M. Screw, C. H. M5×18	64	S-91063	Actuator, Micro Switch
27	111-399	Carriage Bolt M8×70	133-033	Hex. Nut M5	65	111-300	M. Screw, C. H. M3×40	
28	133-004	Hex. Nut M8	43	RM-1029	Lock Bar Guide Bracket	133-029	Hex. Nut M3	
29	133-054	T-Nut M6	44	122-024	Wood Screw, R. H. Phill. 3.8×16	144-057	Flat Washer M3	
30	133-082	Wing Nut, w/Single Hole M5	45	RM-1032	Holder Plate	144-088	Spring Washer M3 (#2)	
31	144-054	Flat Washer M8	46	111-288	Carriage Bolt, Chromed M5×32	66	RM-1023	Spacer Post
32			111-548	Carriage Bolt, M5×20	67	133-033	Hex. Nut M5	
33			122-065	Wood Screw, F. H. Phill. 3.5×16	68	144-090	Spring Washer M5 (#2)	
34					69	RM-1019	Paper Roller Bracket, A	
35					70	RM-1001-K	Paper Holder Plate	
36					71	RM-1001-L	Shaft	
37								
38								
39								
40								
41								
42								
43								
44								
45								
46								
47								
48								
49								
50								
51								
52								
53								
54								
55								
56								
57								
58								
59								
60								
61								
62								
63								
64								
65								
66								
67								
68								
69								
70								
71								



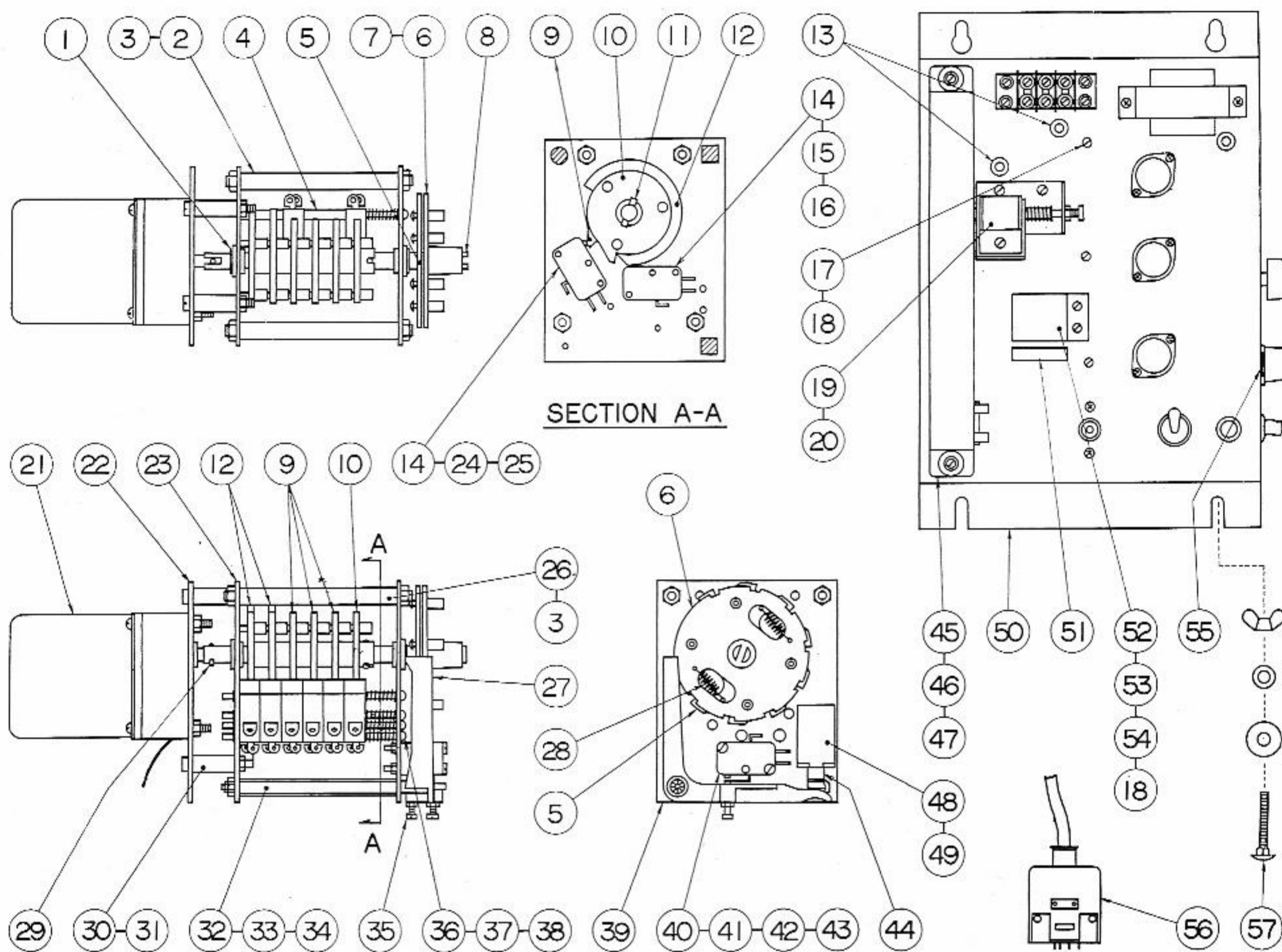
Item	Part No.	Description	Item	Part No.	Description	Item	Part No.	Description	
1	111-557	Set Screw, Hex. Socket H. M6×22	48	RM-2098	Cutter Assembly	102	S-91067	Solenoid, 100V, 1.5 Kg	
2	RM-2001	Front Casting	49	111-204	M. Screw, C.H. M4×12	103	111-201	M. Screw, C. H. M4×6	
3	111-555	M. Screw, F. H. M5×16		144-167	Lock Washer, Ext. M4		111-203	M. Screw, C. H. M4×10	
	133-033	Hex. Nut M5	50	RM-2107	Rubber Washer		133-017	Hex. Nut M4	
	144-090	Spring Washer M5 (#2)	51	RM-2005	Paper Guide Cover		144-076	Spring Washer M4 (#2)	
4	RM-2010	Guide Block	52	RM-2109	Rubber Cushion		144-078	Flat Washer M4	
5	RM-2011	Shim Plate	53	RM-2009	Beam Angle, Lower Left	104	RM-2048	Plunger Pin	
6	111-309	M. Screw, C.H. M5×18	54	S-90934-2	Plug 16P	105	144-078	Flat Washer M4	
	133-033	Hex. Nut M5	55	RM-2023	Finder Cap		155-014	Cotter Pin 1.6×12	
7	RM-2006	Beam Angle, Upper Right	56	111-556	M. Screw, O. H. Phill. Chromed M2×5	106	RM-2049	Plunger Link	
8	RM-2083	Front Screen Bracket		57	RM-2024	Finder Disc	107	3B3-3809	Payout Slide Spring
9	RM-2084	Front Screen		58	RM-2020	Gun Mount Casting, Right	108	144-093	Flat Washer M2.6
10	166-180	Rivet, R. H. Brass 1.4×3		59	RM-2021	Gun Mount Casting, Left		155-077	Cotter Pin 2.5×25
11	RM-2058	Guide Roller Assembly		60	RM-2025	Trigger And Wire Assembly	109	RM-2051	Extension Spring
12	111-407	M. Screw, F.H. M5×14		61	RM-2026	Shoulder Screw	110	RM-2097	Cutter Mounting Plate
	133-033	Hex. Nut M5		62	80452	Telescopic Sight	111	RM-2050	Shot Arm Link
	144-090	Spring Washer M5 (#2)		63	133-004	Hex. Nut M8	112	RM-2076	Feeder Wheel
	144-105	Flat Washer M5			144-132	Spring Washer M8 (#2)	113	111-497	M. Screw, C. H. M6×35
13	RM-2075	Shoulder Stud, Long		64	RM-2022	Rubber Dirt Guard		144-053	Flat Washer M6
14	133-033	Hex. Nut M5		65	RM-2019	Gun Mounting Flange		144-115	Spring Washer M6 (#2)
15	S-90410	Clamp, Cord, Plastic, 10m/m I.D.		66	RM-2012	Universal Joint Assembly	114	111-372	Carriage Bolt M6×28
	111-201	M. Screw, C. H. M4×6		67	RM-2110	Sight And Stylus Assembly		133-003	Hex. Nut M6
17	RM-2007	Beam Angle, Lower Right		68	133-033	Hex. Nut M5		144-115	Spring Washer M6 (#2)
18	S-90591	Clamp, Cord, Plastic, 5 m/m I.D.			111-558	Set Screw, G. H. Special M5×25	115	RM-2034	Stay, Right
	111-201	M. Screw, C. H. M4×6		69	RM-2044	Eye Bolt	116	RM-2038	Actuator Shaft
19	RM-2072	Rear Bar		70	RM-2045	Hold Pin	117	144-078	Flat Washer M4
20	155-032	Cotter Pin 3×30 m/m		71	133-017	Hex. Nut M4		155-014	Cotter Pin 1.6×12
21	S-90445-1	Socket, 3P			144-167	Lock Washer, Ext. M4	118	RM-2040	Micro Switch Adjuster Shaft
22	RM-2035	Shot Mechanism Bracket		72	RM-2043	Telescope Level Adjuster	119	133-029	Hex. Nut M3
23	111-554	M. Screw, F.H. M5×6		73	111-272	M. Screw, C. H. M4×16		144-135	Lock Washer, Ext. M3
24	RM-2056	Tension Limit Chain			133-017	Hex. Nut M4		144-057	Flat Washer M3
25	111-277	M. Screw, C. H. M4×14		74	RM-2042	Telescope Base	120	RM-2041	Spacer, Micro Switch
	133-017	Hex. Nut M4		75	111-201	M. Screw, C. H. M4×6	121	133-029	Hex. Nut M3
26	RM-2052	Bumper Assembly			144-167	Lock Washer, Ext. M4		144-135	Lock Washer, Ext. M3
27	111-203	M. Screw, C. H. M4×10		76	RM-2095	Model Barrel	122	RM-2033	Stay, Left
	133-017	Hex. Nut M4		77	111-195	M. Screw, C. H. M3×6	123	RM-2039	Spacer, Actuator
	144-167	Lock Washer, Ext. M4		78	111-192	M. Screw, C. H. M3×8	124	S-91352	Solenoid, DC. 24V
28	RM-2003	Paper Guide, Upper			133-029	Hex. Nut M3	125	111-559	M. Screw, F. H. Brass M3×4
29	RM-2004	Paper Guide, Lower			144-057	Flat Washer M3	126	RM-2089	Stroke Adjuster
30	111-187	M. Screw, C.H. M2×5		79	RM-2094	Back Screen	127	111-195	M. Screw, C. H. M3×6
31	RM-2028	Gun Stock		80	111-191	M. Screw, C. H. M3×12		144-135	Lock Washer, Ext. M3
32	RM-2029	Gun Stock Plate			133-029	Hex. Nut M3		144-057	Flat Washer M3
33	RM-2030	Gun Stock Fastener, Male, Long			144-057	Flat Washer M3	128	90066	Extension Spring, Reset Hold
	111-203	M. Screw, C. H. M4×10		81	111-285	M. Screw, C. H. M4×35	129	RM-2087	Door Operator
	133-017	Hex. Nut M4			144-076	Spring Washer M4 (#2)	130	111-195	M. Screw, C. H. M3×6
	144-167	Lock Washer, Ext. M4			144-078	Flat Washer M4		155-014	Cotter Pin 1.6×12
34	RM-2031	Gun Stock Fastener, Male, Short		82	91333	Motor, 100V, 1/90, 50/60 Cycle w/Condenser	131	RM-2090	Rope Tie
	111-407	M. Screw, F. H. M5×14			155-066	Roll Pin 2.5×1.4	132	RM-2091	Plunger Guide
	133-004	Hex. Nut M8		83	155-066	Roll Pin 2.5×1.4	133	244-051	Nylon Rope, 1φ White
	144-054	Flat Washer M8		84	RM-2002	Rear Frame Casting	134	RM-2092	Solenoid Base
38	RM-2108	Rubber Grommet		85	RM-2116	Shot Arm Assembly	135	111-203	M. Screw, C. H. M4×10
39	RM-2008	Beam Angle, Upper Left		86	RM-2055	Chain Connect Hook		133-017	Hex. Nut M4
40	RM-2085	Screen Stand Plate		87	111-202	M. Screw, C. H. M4×8		144-167	Lock Washer, Ext. M4
41	111-195	M. Screw, C. H. M3×6		88	111-550	M. Screw, F. H. M5×20		144-078	Flat Washer M4
	133-029	Hex. Nut M3			133-033	Hex. Nut M5	136	RM-2088	Door Model
42	RM-2086	Door Shaft Retainer Bracket			144-105	Flat Washer M5	137	RM-2074	Feeder Shaft
43	111-192	M. Screw, C. H. M3×8		89	RM-2054	Support Bracket	138	RM-2122	Shoulder Stud, Short
	133-029	Hex. Nut M3		90	RM-2046	Rear Casting Sash	139	111-195	M. Screw, C. H. M3×6
	144-135	Lock Washer, Ext. M3		91	RM-2057	Rear Casting Sash, Side		144-135	Lock Washer, Ext. M3
44	RM-2082	Door And Coil Mounting Bracket		92	RM-2053	Joint Pin	140	RM-2081	Extension Spring
	111-407	M. Screw, F. H. M5×14		93	144-092	E. Washer 2.3 m/m	141	RM-2078	Roller Arm, Lower
	133-033	Hex. Nut M5		94	RM-2027	Trigger Case	142	RM-2079	Roller Arm, Upper
	144-090	Spring Washer M5 (#2)		95	111-191	M. Screw, C.H. M3×12	143	RM-2073	Roller Arm Shaft
46	RM-2093	Back Screen Hanger		96	5B-7649	Extension Spring, 20 Payout	144	RM-2077	Cam
47	111-407	M. Screw, F. H. M5×14		97	RM-2037	Length Adjuster Spring	145	111-312	Set Screw, C. H., Special M3×6.5
	133-033	Hex. Nut M5		98	RM-2036	Actuator	146	RM-2080	Guide Roller
	144-105	Flat Washer M5		99	S-91342	Switch, Micro Type	147	144-102	E. Washer 4 m/m
				100	RM-2047	Solenoid Mounting Bracket	148	S-90445-2	Plug, 3P
				101	111-308	M. Screw, C. H. M5×8			
					144-090	Spring Washer M5 (#2)			



Item	Part No.	Description	Item	Part No.	Description	Item	Part No.	Description
1	RM-1022	Paper Roller, B	20	RM-2120	Shot Pin	39	RM-2063	Spacer, Micro Switch
2	RM-2061	Spacer Post, w/Tap	21	RM-2121	Pin Holder	40	RM-2065	Switch Actuator
3	133-033	Hex. Nut M5	22	144-208	Flat Washer M1.7	41	S-91343	Switch, Micro Type
4	144-149	Lock Washer, Ext. M5	23	111-200	M. Screw, C. H. M3×20	42	RM-1023	Spacer Post
5	111-272	M. Screw, C. H. M4×16	24	133-029	Hex. Nut M3	43	RM-2099	Cutter Base Assembly
6	144-167	Lock Washer, Ext. M4	25	RM-2118	Cone Spring Assembly	44	RM-2105	Compression Spring
7	144-078	Flat Washer M4	26	133-081	Hex. Nut M3.5 P=0.35	45	RM-2017	Hex. Stopper
8	RM-2071	Spacer	27	144-207	Wave Washer M5	46	155-075	Roll Pin 4×14
9	RM-2068	Guide Roller	28	RM-2119	Pin End Retainer	47	144-026	Flat Washer, Special 13.5-22.2×0.5
10	RM-2066	Roller Bracket, Upper	29	RM-2117	Shot Arm Assembly, w/o Pin	48	144-099	Flat Washer, Small Type M6
11	111-195	M. Screw, C. H. M3×6	30	144-105	Flat Washer M5	49	155-014	Cotter Pin 1.6×12
12	144-135	Lock Washer, Ext. M3	31	155-014	Cotter Pin 1.6×12	50	RM-2104	Spacer
13	RM-2069	Guide Roller Shaft	32	RM-2018	Pivot Screw	51	RM-2103	Spacer Post
14	RM-2059	Roller Cover Bracket	33	133-036	Hex. Nut M5 (#3)	52	S-91067	Solenoid, 100V, 1.5 Kg
15	RM-2062	Micro Switch Shaft, Guide Roller	34	RM-2016	Pivot Shaft	53	RM-2048	Plunger Pin
16	133-002	Hex. Nut M2.6	35	RM-2015	Universal Joint Mounting, Inner	54	144-095	Flat Washer, Small Type M4
17	144-093	Flat Washer M2.6	36	RM-2013	Universal Joint Mounting, Frame	55	155-014	Cotter Pin 1.6×12
18	RM-1024	Shaft	37	144-105	Flat Washer M5	56	RM-2100	Cutter Blade
19	133-080	Push Nut 3m/m	38	155-063	Straight Pin 5×20 (M6)	57	RM-2102	Spring Bracket
20	RM-2070	Paper Guide Wire	39	RM-2014	Universal Joint Journal, Outer		RM-2106	Extension Spring
21	RM-2067	Roller Bracket, Lower	40	111-205	M. Screw, C. H. M4×20		RM-2101	Plunger Bracket
22	111-195	M. Screw, C. H. M3×6	41	144-167	Lock Washer, Ext. M4		111-204	M. Screw, C. H. M4×12
23	144-135	Lock Washer, Ext. M3	42	144-179	Flat Washer, Special 6.1-11×0.6		144-167	Lock Washer, Ext. M4
24	144-057	Flat Washer M3	43	RM-2064	Compression Spring		133-039	Hex. Nut M4 (#3)
25	RM-1021	Paper Roller, A						
26	RM-2060	Main Plate						



Item	Part No.	Description	Item	Part No.	Description	Item	Part No.	Description	
1	S-91206	Switch, Push Button, Baby Type	19	S-91343	Switch, Micro Type		133-082	Wing Nut, w/Single Hole M5	
2	80435	Sticker, Motor	20	111-199	M. Screw, C.H. M3×18		144-013	Flat Washer, Special 5.6-12.7×1.2	
3	80434	Sticker, Cut		133-029	Hex. Nut M3		35	80473	Sticker, Timing Relay
4	S-90863	Terminal Plate, 1L 5P		144-057	Flat Washer M3		36	S-91340	Cut Relay
5	111-192	M. Screw, C.H. M3×8		144-135	Lock Washer, Ext. M3		37	111-192	M. Screw, C. H. M3×8
	133-029	Hex. Nut M3	21	S-91354	Actuator, Micro Switch			133-029	Hex. Nut M3
	144-135	Lock Washer, Ext. M3	22	RM-3026	Cam Timing Motor 7 Shot			144-057	Flat Washer M3
6	80423	Sticker, 1 Ampere	23	111-174	Set Screw, Hex. Socket, Cup Point M3×4			144-135	Lock Washer, Ext. M3
7	80425	Sticker, 3 Ampere	24	RM-3022	Timing Motor Bracket		38	80451	Sticker, Cut Relay
8	S-90711	Fuse, 3 Ampere, Japanese Size 6.4φ×30	25	S-91353	Timing Motor, 100V, 50 Cycle, 4 RPM, C. W.		39	80450	Sticker, T. C. Relay
9	S-91288	Fuse Holder, 2P High Grade	26	111-192	M. Screw, C.H. M3×8		40	S-91339	Target Control Relay
10	S-90645	Fuse, 1 Ampere, Japanese Size 6.4φ×30		133-029	Hex. Nut M3		41	80449	Sticker, Shot Relay
11	111-198	M. Screw, C. H. M3×16		144-057	Flat Washer M3		42	S-91338	Shot Relay
	133-029	Hex. Nut M3	27	RM-3021	Timing Motor Assembly		43	RM-3020	Coin Relay Assembly
	144-135	Lock Washer, Ext. M3	28	111-192	M. Screw, C. H. M3×8		44	80448	Sticker, Coin Relay
12	91337	Power Transformer, 90~100-6, 27, 28V, 1A		133-017	Hex. Nut M4		45	111-203	M. Screw, C. H. M4×10
13	RM-3002	Cam Unit Assembly		144-167	Lock Washer, Ext. M4			133-017	Hex. Nut M4
14	S-90490	Condenser, 500 MF, 50W.V. Electrolytic Can (25.4φ×60ℓ)	29	LB-8012	Mounting Bracket, Silicon Diode		46	S-90862	Rectifier, Silicon Diode
15	RM-3001	Cam Motor Unit Base	30	S-91015-1	Socket, 12P		47	S-91016	Terminal Plate, 1L 7P
16	RM-3019	Spacer Tube	31	S-91020	Rubber Grommet 5φ×8φ×4.5		48	S-91314	Rectifier, Silicon Diode
17	111-272	M. Screw, C. H. M4×16		32	S-90935-1	Socket, 8P	49	S-91364	Condenser, 0.1 MFD. 400 W.V. Oil Tubular
	144-078	Flat Washer M4		33	S-90934-1	Socket, 16P	50	S-93163	Condenser, 0.05 MFD. 400 W.V. Oil Tubular
	144-167	Lock Washer, Ext. M4	34	111-350	Carriage Bolt, Chromed M5×25		51	S-90286	Resistor, 100Ω 1/2W
18	S-90872	Rubber Grommet 9φ×15φ				52	S-90440	Condenser, 200 MF, 50 W.V. Tubular	



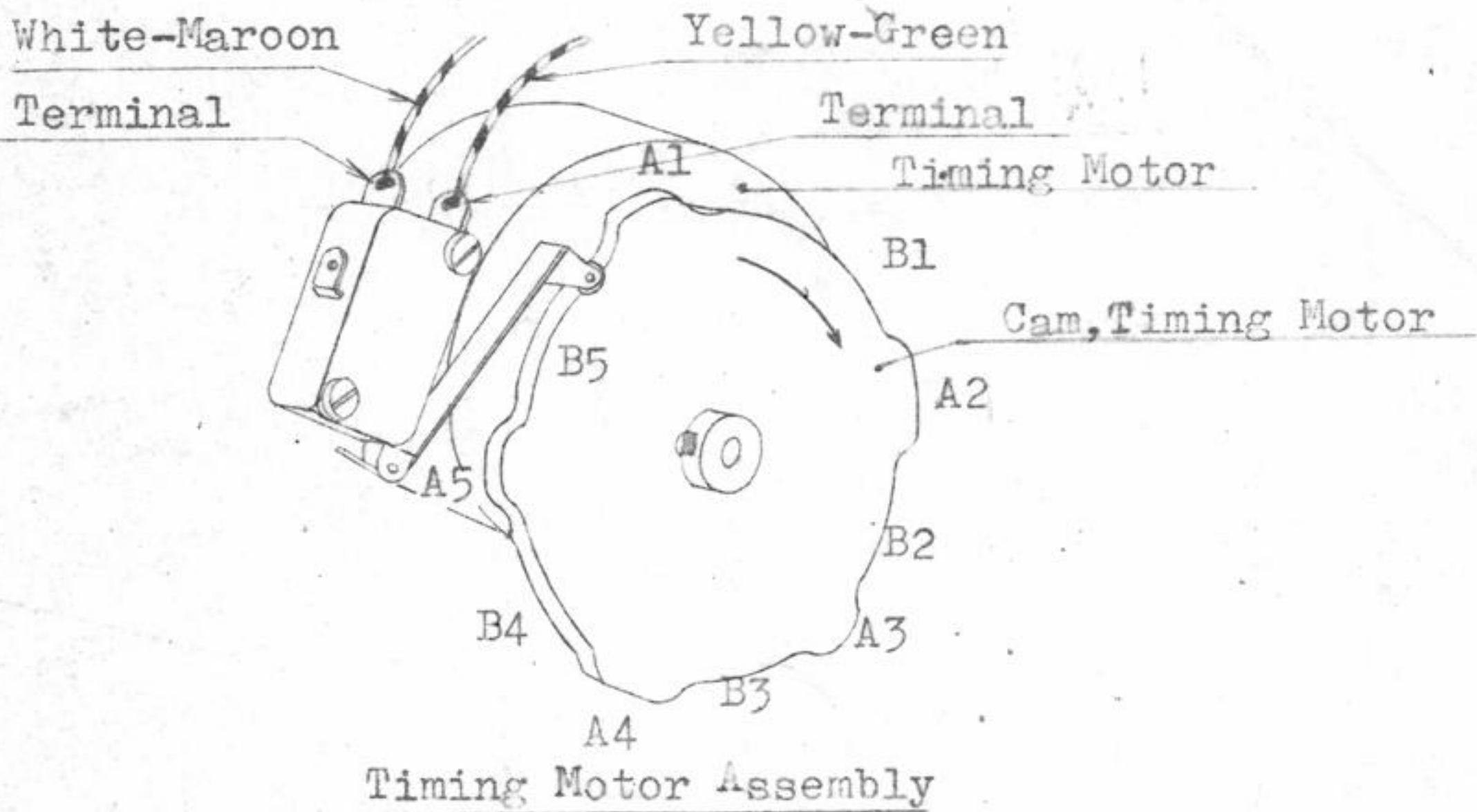
Item	Part No.	Description	Item	Part No.	Description	Item	Part No.	Description
1	144-051	E. Washer 6 m/m	22	RM-3005	Cam Motor Base	42	80447	Sticker, Number, 6-1
2	RM-2061	Spacer Post, w/Tap	23	RM-3004	Cam Unit Base, B	43	111-279	M. Screw, C. H. M3×28
3	133-033	Hex. Nut M5	24	RM-3018	Shim Plate		133-040	Hex. Nut M3 (#3)
4	144-090	Spring Washer M5 (#2)	25	80437	Sticker, Number, 1		144-088	Spring Washer M3 (#2)
5	RM-1025	Spacer Tube		80438	Sticker, Number, 2	44	91322	Plunger Assembly
6	RM-3025	7 Shot, Count Disc Stopper		80439	Sticker, Number, 3	45	91347	Reverb Unit Assembly
7	RM-3024	7 Shot, Count Disc		80440	Sticker, Number, 4	46	RM-4003	Spacer
8	166-179	Rivet, Round Head, Aluminum 2.6×12		80441	Sticker, Number, 5	47	111-199	M. Screw, C. H. M3×18
9	RM-3007	Main Shaft		80442	Sticker, Number, 6		133-029	Hex. Nut M3
10	RM-3013	Cam, #4, 5	26	RM-1023	Spacer Post		144-020	Flat Washer, Special 3.6-9.5×0.8
11	RM-3014	Cam, #6	27	RM-3015	Shot, Count Arm		144-088	Spring Washer, M3 (#2)
12	155-062	Roll Pin 3×14	28	RM-3010	Extension Spring	48	91321	Cam Start Coil
13	RM-3027	7 Shot, Cam, #1, 2	29	155-066	Roll Pin 2.5×14	49	111-194	M. Screw, C. H. M3×5
14	S-91020	Rubber Grommet, 5φ×8φ×45	30	RM-1026	Spacer Tube	50	S-91349	Amplifier "RM" 100V 3W
15	S-91342	Switch, Micro Type	31	111-207	M. Screw, C. H. M4×30	51	80474	Sticker, Mute Relay
16	80443	Sticker, Number, 7		133-017	Hex. Nut M4	52	S-91346	Relay, Miniature Type 2T
17	80444	Sticker, Number, 8		144-076	Spring Washer M4 (#2)	53	S-91314	Rectifier, Silicon Diode
18	S-90860	Terminal Plate, 1L, 4P		144-167	Lock Washer, Ext. M4	54	S-90439	Condenser, 100 MF, 50W.V. Tubular
19	111-192	M. Screw, C. H. M3×8	32	RM-3016	Shaft	55	80423	Sticker, 1 Ampere
20	133-029	Hex. Nut M3	33	RM-3006	Spacer Tube	56	S-90935-2	Plug, 8P
	144-088	Spring Washer M3 (#2)	34	133-040	Hex. Nut M3 (#3)	57	111-288	Carriage Bolt, Chromed M5×32
	144-057	Flat Washer M3		133-080	Push Nut 3 m/m		90008	Rubber Bushing
	144-088	Spring Washer M3 (#2)	35	111-198	M. Screw, C. H. M3×16		144-013	Flat Washer, Special 5.6-12.7×1.2
21	91334	Motor, 100V, 1/50, 50/60 Cycle w/Condenser		133-040	Hex. Nut M3 (#3)		133-082	Wing Nut, w/Single Hole M5
			36	RM-1024	Shaft			
			37	RM-3017	Compression Spring			
			38	133-080	Push Nut 3m/m			
			39	RM-3003	Cam Unit Base, A			
			40	S-91344	Switch, Micro Type			
			41	80446	Sticker, Number, 3-1			





RIFLEMAN  
CONVERSION INSTRUCTIONS  
TO INCREASE DOOR OPENING TIME

To increase door open time reverse micro switch leads.



Operating Time (second)	50 ~	60 ~
Cam		
A1	0.75	0.62
A2	1.04	0.87
A3	0.63	0.52
A4	0.84	0.69
A5	0.58	0.48
B1	3.33	2.78
B2	2.08	1.75
B3	1.67	1.39
B4	1.58	1.32
B5	2.5	2.08