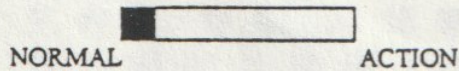


## ACTION TO CHEAT GAME 秘技功能之使用方法

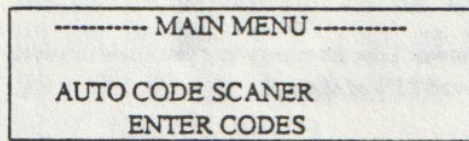
A) MOVE SWITCH TO NORMAL POSITION AND POWER ON.

首先將選擇掣推到 NORMAL 之位置上，開啓電源。



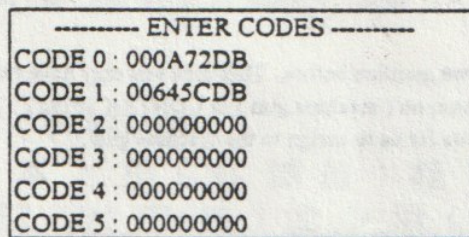
B) SELECT ENTER CODES AND PRESS START BUTTON.

選擇 ENTER CODES 後，按 "START" 掣玩遊戲。



C) ENTER CODES AND PRESS START TO PLAY GAME.

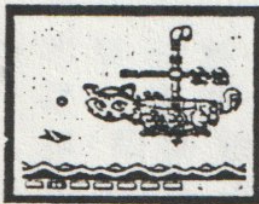
用手掣輸入密碼後，按 "START" 掣玩遊戲。



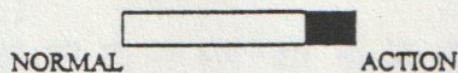
D) WHEN PLAYING THE GAME MOVE SWITCH TO ACTION POSITION.

當遊戲進行時，將選擇掣推到 "ACTION" 之位置上。

1)



2)



E) NOW YOU ARE IN THE CHEATING MODE. (INVINCIBLE, INFINITIVE LIVES, ETC. WHICH DEPEND ON THE CODE YOU ENTER.)

這時已進入秘技狀態，無敵，不死等，依據密碼而定。



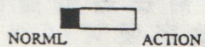
# YOU CAN ENABLE AND DISABLE THE CHEAT BY MOVING THE SWITCH.

註：如在遊戲中想取消秘技，只需將選擇掣推回 NORMAL 之位置便可。

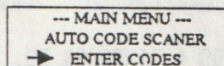
## AUTO CODE SCANNER 密碼追蹤功能

AUTO SEARCH CODE EXAMPLE: SEARCH FOR UNLIMITED TIME.  
使用例子: 找尋無限時間

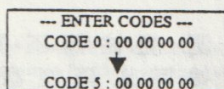
- A) MOVE SWITCH TO NORMAL POSITION AND POWER ON  
首先將掣推到 NORMAL 之位置, 開啓電源。



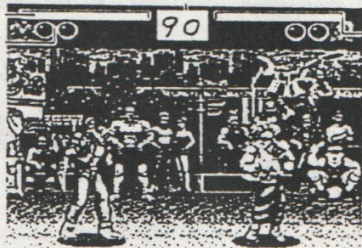
- B) SELECT ENTER CODES.  
選擇 ENTER CODES.



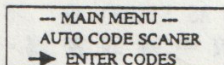
- C) WHEN ENTER CODES SCREEN SHOWN, PRESS START TO PLAY THE GAME.  
在此畫面時, 按 "START" 掣進入遊戲畫面。



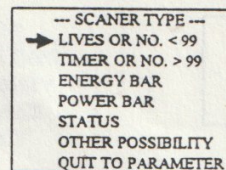
- D) DURING THE GAME, WHEN THE SECRRN'S TIMER SHOWN 90, PRESS RESET BUTTON.  
當遊戲畫面顯示時間是 90 時, 按 "RESET" 掣。



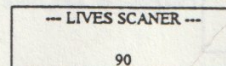
- E) SELECT AUTO CODE SCANNER  
選擇 AUTO CODE SCANNER



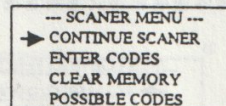
- F) SELECT LIVES OR NO. < 99.  
選擇 LIVES OR NO. < 99。



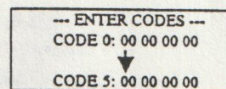
- G) ENTER NO. 90 AND PRESS START.  
輸入 90 再按 "START" 掣。



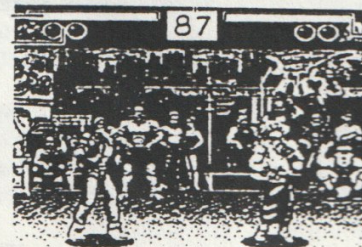
- H) SELECT ENTER CODES.  
選擇 ENTER CODES。



- I) WHEN ENTER CODES SCREEN SHOWN, PRESS START TO PLAY THE GAME AGAIN.  
再按 "START" 掣進入遊戲畫面。



- J) DURING THE GAME, WHEN SCREEN'S TIMER SHOWN 87, PRESS RESET BUTTON.  
當遊戲畫面時間顯示 87 時, 再按 "RESET" 掣。



## AUTO CODE SCANNER TECHNIQUE

### A) LIVES OR NO. < 99

This is the most simple and efficient way to use. You have to count the feature that you are searching for it. For example, if you start with 3 lives, then 3 is the countable number. Or the time start at 99, then 99 is the countable number.

### B) TIME OR NO. > 99

This technique is used when method A was not success but the number still can be count. This happen when timers are being used and those number are greater than 99. For example like H.P. and money in RPG game.

### C) ENERGY BAR

This technique is useful when game is no number is shown. Like the energy that you know relatively how much energy you have. Example 100%, 75%, 50%, and 25% of energy.

### D) POWER BAR

This is the most powerful method among all the searching method. This technique using by comparing the greatest & smallest with current status. For the comparing, we can use it in searching lives, level, energy & etc. User can use their imagine for searching any special codes they.

### E) STATUS

This method is quite different from the technique that we mention before. This time you only have two choice: true or false. For example if we were searching the weapon (machine gun) in CONTRA SPIRIT. Then we either have machine gun or we do not. There is no value for us to assign to the machine gun.

### F) OTHER POSSIBILITY

This method is the last chance if all kind of technique that we used before are failed. It works similar to method E. But it can apply to any value other than the start value.

### PARAMETER CODEA TRANSFER FUNCTION.

When in the POSSIBLE CODE mode, press A button to mark the parameter codes that you want to entry. Press START button will transfer those codes to ENTER CODES screen.

## 密碼追蹤功能 ( AUTO CODE SCANNER ) 介紹

### A) 生命或數值少於 99 ( LIVES OR NO. < 99 )

這是最常用的方法, 只需在遊戲畫面中, 看到生命值, 隻數, 時間等數字便可。( 必須在 99 以內 )。例如隻數是 3 或 99, 那麼 3 或 99 便是我們要知道的數目。

### B) 時計或任何數值大過 99 ( TIMER OR NO. > 99 )

例如時間倒數, H.P., 金錢等等, 如數值開始時大過 99, 便可使用這方法。

### C) 能源線 ( ENERGY BAR )

在某些遊戲中, 例如能源, 魔法等不是用數字顯示出來的, 它在一開始時以滿能源作為確定, 跟著以 75% / 50% / 25% 作比較, 從中找出密碼。

### D) 能量 ( POWER BAR )

它基本上跟 ( 能源線 ) 相同, 但以比較多過 ( GREATER THAN START ) 或少過 ( SMALLER THAN ) 之形式, 可從中得到密碼。此功能在各種追蹤功能中, 功能最強勁。可適用於生命、隻數、能源、選關、選武器等等, 用家可自行發揮。

### E) 不同形態 ( STATUS )

這有法跟從前的完不同, 這裡只有兩種選擇, 和開始 " 相同 " ( SAME AS START ) 或 " 不相同 " ( OPPOSITE TO START ) 從比較中得取密碼。

### F) 其它可能的法 ( OTHER POSSIBILITY )

這個方法是最後的方法, 跟 E 的方法差不多, 但在一些較難找密碼之遊戲中, 如在使用前五種方法都不成功, 可試用這方法, 但重覆步方法較多及慢, 但這是最穩陣的方法。

K) SELECT CONTINUE CODE SCANNER.  
選擇 CONTINUE CODE SCANNER。

— SCANNER MENU —  
→ CONTINUE SCANNER  
ENTER CODES  
CLEAR MEMORY  
POSSIBLE CODES

L) ENTER 87 AND PRESS START BUTTON.  
輸入 87 後再按 "START" 掣。

— LIVES SCANNER —  
87

M) SELECT POSSIBLE CODES AND CHOSE CODES TO TEST BY PRESS BUTTON A  
選擇 POSSIBLE CODES 用掣選擇密碼和測試適用之密碼

1) — SCANNER MENU —  
CONTINUE SCANNER  
ENTER CODES  
CLEAR MEMORY  
→ POSSIBLE CODES

2) — PARAMETER LIST —  
→ # 030A97C1  
0321A911  
# 01012211

X-TERMINATOR for Game Gear . Parameter code list Game Gear 遊戲密碼表

SONIC THE HEDGHOG 2

000398D2 INFINITE LIVES  
000599D2 INVINCIBILITY  
000795D2 ZONE SELECT  
000796D2 ACT SELECT

SHINOBI

00040BD2 INFINITE LIVES  
00011ED2 INFINITE SPECIAL WEAPONS

WONDERBOY

00022DC1 INFINITE LIVES  
000C36CC INFINITE VITALITY

BATMAN RETURNS

000321C0 INFINITE LIVES  
000A59C1 INFINITE ENERGY  
00021FC0 INFINITE SPECIALS

DONALD DUCK

000383C0 INFINITE LIVES  
00013EC1 INFINITE ENERGY  
00075BC0 LEVEL SELECT

SPIDERMAN VS THE KINGPIN

002075DF INFINITE WED FLUID  
000572DF INFINITE TIME  
00FF76DF INFINITE ENERGY

STREET OF RAGE

0017F3CC INFINITE ENERGY  
000309CD INFINITE LIVES  
000767C6 LEVEL SELECT

SUPER SMASH TV

000512C5 INFINITE LIVES

TERMINATOR

006416CC INFINITE ENERGY

PRINCE OF PERSIA

000392C2 INFINITE ENERGY

BARE KNUCKLE 2

0003A6C9 INFINITE LIVES

TOM 'N JERRY

06062ACB INFINITE ENERGY

INDIANA JONES

000688C9 INFINITE LIVES

CLIFFHANGER

0002C2D4 INFINITE LIVES

ROBOCOP 3

043F60C7 INFINITE ENERGY

ADDAMS FAMILY

000538C5 INFINITE LIVES

T2 JUDGMENT DAY

05383FCF INFINITE ENERGY

BART SIMPSON VS WORLD

0003A1D2 INFINITE LIVES  
0004A2D2 INFINITE ENERGY

HOOK

0002F7DA INFINITE LIVES  
0002A9DA INFINITE ENERGY

STRIDER RETURNS

00051BD5 INFINITE LIVES

DORAEMON

00035BC0 INFINITE LIVES

GLOBAL GLADIAN

0005B9D0 INFINITE LIVES