

SEGA

TAZ

IN ESCAPE
FROM MARS

MEGA HIT SERIES

GENESIS



KIDS TO ADULTS

K-A

CONTENT RATED BY
ESRB

WARNINGS

Read Before Using Your Sega Video Game System

EPILEPSY WARNING

A very small percentage of individuals may experience epileptic seizures when exposed to certain light patterns of flashing lights. Exposure to certain patterns or backgrounds on a television screen or while playing video games may induce an epileptic seizure in these individuals. Certain conditions may induce undetected epileptic symptoms even in persons who have no history of prior seizures or epilepsy. If you, or anyone in your family, has an epileptic condition, consult your physician prior to playing. If you experience any of the following symptoms while playing a video game - dizziness, altered vision, eye or muscle twitches, loss of awareness, disorientation, any involuntary movement or convulsions - IMMEDIATELY discontinue use and consult your physician before resuming play.

PROJECTION TELEVISION WARNING

Still pictures or images may cause permanent picture tube damage or mark the phosphor of the CRT. Avoid repeated or extended use of video games on large-screen projection televisions.

HANDLING YOUR SEGA CARTRIDGE

- The Sega Genesis cartridge is intended for use exclusively on the Sega Genesis System.
- Do not bend it, crush it or submerge it in liquids.
- Do not leave it in direct sunlight or near a radiator or other source of heat.
- Be sure to take an occasional break during extended play, to rest yourself and the Sega cartridge.

CHECK OUT SEGA ON THE INTERNET



web site: <http://www.sega.com>
email: webmaster@sega.com
CompuServe: GO SEGA

1-900-200-SEGA



1-900-200-SEGA
Learn SEGA game secrets
from the masters. Call now.

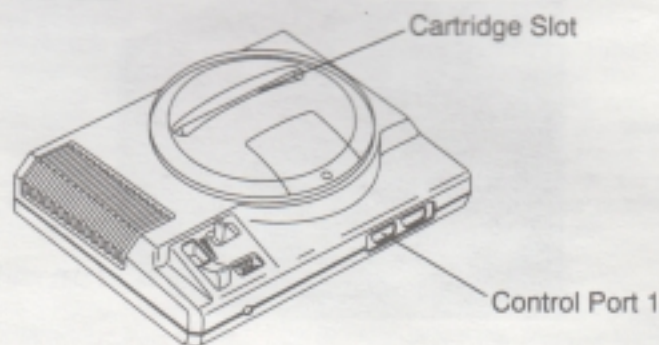
U.S.: 1-900-200-SEGA \$.95/min. (recorded), \$1.50/min.
(live). Must be 18 or have parental permission.
TDD phone required. Sega of America
Canada: 1-900-451-5252 U.S. \$1.50/min (recorded/live)



CONTENTS

SETTING UP	2
OPTIONS SCREEN	3
TAKE CONTROL!	4
TAZ'S SPECIAL MOVES	5
TAZ ACTION!	8
SNACKS	9
MORE GREAT ITEMS	10
PLANET MARS	11
TIPS FROM TAZ	14
CREDITS	15

SETTING UP



1. Set up your Genesis system and make sure the power is turned OFF.

**Always turn the power OFF
before inserting or removing the cartridge.**

2. Plug a Sega controller into control port 1.
3. Insert the game cartridge into the cartridge slot, and press it down **firmly**.
4. Turn the power ON. In a few moments, the Sega logo will appear, followed by the Title screen.
5. Press **Start** to whirl off to an out-of-this-world adventure with TAZ!

—OR—

Use the **D-Pad** to select Options, and then press **Start** to go to the Options screen.

If you don't see the Sega screen, turn the power OFF. Check your Genesis setup, make sure the cartridge is firmly inserted in the console, and then turn the power ON.

OPTIONS SCREEN

Before you start a game, you can change the game settings on the Options screen. On the Title screen, use the **D-Pad** to select Options and then press **Start**.

On the Options screen:

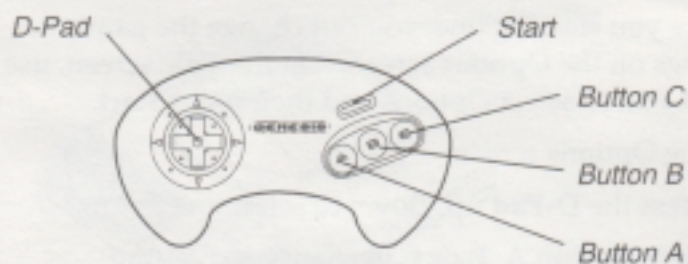
- Press the **D-Pad** up/down to select an option.
- Press **Button A, B** or **C** to change the setting.
- Press **Start** to exit back to the Title screen.

BUTTON CONTROLS

Switch the ACTION, SPIN and JUMP buttons. The normal settings are:

ACTION	Button A
SPIN	Button B
JUMP	Button C

TAKE CONTROL!



- Start the game **Start**
- Move TAZ **D-Pad** in any direction
- Eat something Stand next to an item. If it's edible, TAZ will pick it up and scarf it down.
- Pick up an item; **Button A (ACTION)**
set it down
- Move levers, **Button A (ACTION)**
operate machinery
- Spin **Button B (SPIN)**
- Jump up **Button C (JUMP)**
- Jump left/right/down **Button C (JUMP) + D-Pad left/right/down**
- Look up/down **D-Pad up/down**
- Pause/resume game **Start**

See pages 5-7 for TAZ's special moves. Remember, your button controls will be different if you've switched the ACTION, SPIN and JUMP buttons on the Options screen.

TAZ'S SPECIAL MOVES

TAZ TORNADO

- Press **Button B (SPIN) + D-Pad left** or right for a ground tornado.
- Press **Button C (JUMP) + Button B (SPIN) + D-Pad left** or right for a flying tornado.



TAZ BOOMERANG

- To spin up a shaft, stand under the shaft and press **Button C (JUMP)**.
- Press and hold the D-Pad in the direction of one of the shaft walls.
- Immediately press and hold **Button B (SPIN)** until you reach the top.



TAZ SMASH

- Spin into a TAZ Tornado to bust through brick walls.

TAZ 360

- Stand back from a loop-de-loop and press **Button B** (SPIN) to start a spin.
- Press and hold the **D-Pad** in the direction of the loop to spin 360° around the loop-de-loop.
- Do a TAZ 360 around rock barriers and the pipe maze. This move takes a little practice, but once you get the hang of it, it's easy!

**TAZ DRILL**

- Spin into a TAZ Tornado and press the **D-Pad** toward a dirt area to drill underground.

**TAZ TURN-ON**

- Press **Button A** (ACTION) to throw switches and levers that open or shut doors and operate machinery.

TAZ WHIRLY COPTER

- Find a Whirly Copter and press **Button A** (ACTION) to pick it up.
- Press and hold **Button B** (SPIN) to spin up, up and away.
- Use the **D-Pad** to direct TAZ's flight.
- Release **Button B** to float to a safe landing.
- Press **Button A** again to set down the Whirly Copter.

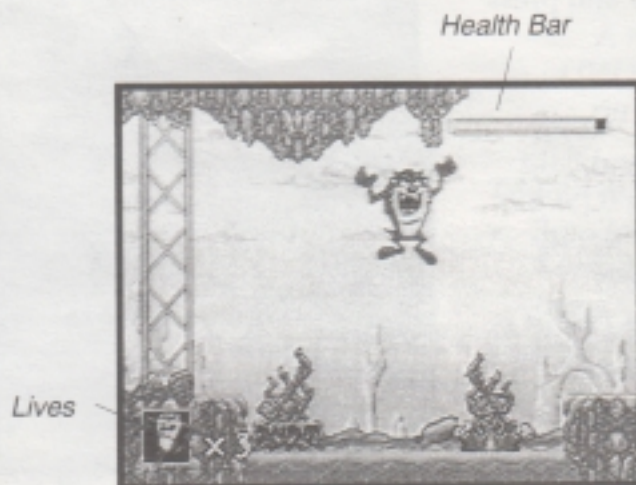


TAZ ACTION!

Hot-tempered TAZ is Marvin the Martian's favorite Rare Earth Creature. TAZ is kidnapped by Marvin the Martian's spaceship, zipped off to Mars, and caged in a zoo!

But Taz isn't about to sit around and be stared at by Instant Martians. No way! He's OUTTA THERE!

Use TAZ's moves and special attacks to make your escape. While you're at it, spin into as many space creatures as you can, turning them into space dust. That'll teach Marvin the Martian to mess with the wrong Earthling!



LIVES

TAZ starts with 3 lives. When his health bar drains, he loses 1 life. If he loses them all, the game ends.

HEALTH BAR

Some Health drains from the bar whenever TAZ is hit. Eat snacks (page 8) to restore TAZ's Health. If the bar empties, you lose 1 Life.

SNACKS

TAZ must eat to stay healthy. But watch out! Some junk food just isn't worth the trouble!

- **First-aid kits** restore some of TAZ's Health.

- **Gasoline** fuels TAZ's temper. Let TAZ swallow a can, then press the ACTION button for a blast of hot breath that melts metal!



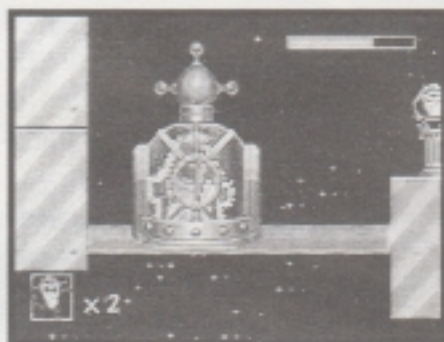
- With a mouthful of ammunition from a **box of rocks**, TAZ can spurt a barrage of stones when you press the ACTION button.
- **Bubbling beakers** contain a potent mixture that turns TAZ into Jumbo TAZ. He's big, tough and snarly. He's also too heavy to spin! Some bubbling beakers will shrink TAZ to mini-size!

- **Bombs** explode. If TAZ eats one, he'll explode, too!



MORE GREAT ITEMS

- Transporters zap TAZ to another part of the level.



- Steer TAZ through a **shrink ray** and watch him melt down to mini-size! He's small enough to fit through low tunnels. **Growth rays** expand TAZ to his jumbo size.

- Find a crate and you've made it through the maze. Jump in to escape to the next level!



PLANET MARS

MARS ZOO

TAZ is trapped in a cage on Mars, along with a menagerie of strange animaloids. Spin to break through the walls, and boomerang from wall to wall to get higher. Springy, hanging cages hold more dangerous creatures. A maze of loop-de-loop pipes keeps TAZ spinning! Use the TAZ 360 move to defeat the giant elephant.



MOLEWORLD

Spin through a world that's half above and half below the ground. Bump off molemen and avoid grotesque ore worms and spinning drill bits. TAZ turns into a drill bit himself to burrow through the ground, all the while pursued by a giant drilling machine that forces him to keep moving or perish! Jump onto speeding bits of falling rock while battling a flying mining machine!



PLANET X

On yet another strange planet, TAZ confronts bizarre aliens in a water-drenched terrain. Ride looping vertical waterfalls through a seemingly endless maze, jumping onto dry land at just the right moment!



Find the Whirly Copter to fly up the vertical maze. One false move and TAZ will hit the drink! Knock the Drago-Worm down to size to defeat him and escape!

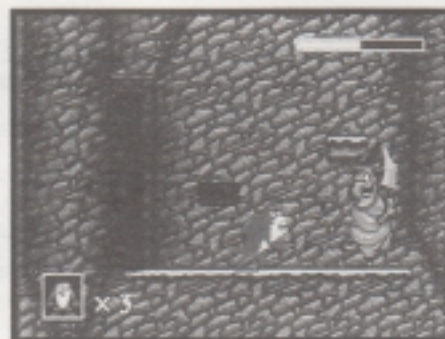
MEXICO

Yosemite Sam, Road Runner and Wile E. Coyote appear to head our hero off at the pass! But first TAZ must survive a fast-moving, dusty, horns-and-hoof-filled wagon train stampede! In the village, killer bees, bandidos and a rampaging bull make the pottery fly! TAZ must lure El Toro into charging the walls so he can escape!



THE HAUNTED CASTLE

TAZ spins and hops along the outside of a murky castle, raising and lowering the gates while battling annoying Flying Eyeballs and nasty Killer Bees. Once inside, TAZ spins through revolving doors into secret passages and huge spiral towers. Bubbling pools, sizzling walkways, flaming nozzles and great green gobs of goo fill the castle. Witch Hazel and Yosemite Sam provide even more misery for the tortured TAZ. The Mad Scientist shoots sparks while huge Gossamer chases TAZ back and forth. Stun the monster, then trade brains to finally defeat the Mad Scientist!



MARVIN THE MARTIAN'S HOUSE

Eighty-five percent of all accidents happen at home. Marvin the Martian's House is no exception, with K-9 and an army of laser-shooting robots as live-in hazards. TAZ falls into the trash compactor and must ricochet up the closing walls in the nick of time! Then a duplicating device turns TAZ into twins! One TAZ must jump off the other one's head to escape. A barrage of laser beams and weird gravity make this a real brain-boggler! Marvin the Martian drives a huge Pedmobile that can only be defeated by an attack to its top!



TIPS FROM TAZ

- Use the TAZ Tornado to smack many of the enemies. They'll disappear in a puff of Martian smoke. Some foes are tougher to beat than others. Don't give up!
- Not all enemies can be destroyed by a TAZ Tornado. Some can only be destroyed by fire or rocks. Some can't be destroyed at all!
- TAZ has a number of special powers and transformations, but they all last only a short time. Make the most of them while you have them!
- As you play each game, try to remember your way through the mazes so you know where to find the power-ups and exits.
- Use your spin to move quickly through some areas, especially if you know the way.
- When you see food or odd items scattered around, try to figure out how TAZ can use them.



CREDITS

PRODUCER

Bert Schroeder

ASSISTANT PRODUCER

John Pedigo

DESIGN, ART & PROGRAMMING

HeadGames, Inc.

DIRECTOR

Jonathan Miller

DESIGN

Joshua Singer Steven Ross

Doug Nishimura Jonathan Miller

ART

Doug Nishimura Steven Ross

Yongki Yoon

PROGRAMMING

Joshua Singer David Eader

Mellin Wong Alex Tyrer

Jonathan Miller

MUSIC & SOUND EFFECTS

Neuromantic Productions

Mark Steven Miller Jim Hedges

PRODUCT MARKETING MANAGER

France Tantiado

ASSOCIATE PRODUCT MARKETING MANAGER

Ami Blaire

MARKETING ASSISTANT

Jaime Wojick

ADDITIONAL DESIGN SUPPORT

Keith Higashihara

MORE CREDITS

LEAD TESTER

Ben Szymkowiak

ASSISTANT LEAD TESTERS

Siegie Stangenberg Tony Lynch

TESTERS

Tim Spengler	Alex Fairchild
Jeff Junio	Christine Watson
Matt McKnight	Mike Baldwin
Chris Lucich	Ilya Reeves
Fernando Valderama	Arnold Galano
Rachel Bristol	Ben Cureton
Jason Kuo	Bob Lee
John Amirkhan	Xen Lang
Greg Vogt	Alex Villagran
Aaron Hommes	Mike Williams
Renato Alferez	John Jansen
Maria Tuzzo	Dave Martin
John Melchoir	Marc Dawson
Derek Carmichael	Mark Griffin
Joe Cain	Darin Johnston
Greg Fleming	

MANUAL

Carol Ann Hanshaw

SPECIAL THANKS

Clint Dyer	Tom Abramson
Joe Owens	Holly Stein
Catherine Sollecito	Christine Bertoglio
Sonya Sigler	Sutton Trout
Diane Fornasier	

Limited Warranty

Majesco Sales Inc. warrants to the original purchaser that this Sega Genesis Cartridge will be free from defects in materials and workmanship for ninety (90) days from the date of purchase. Defective media returned by the purchaser during the ninety (90) day period will be replaced without charge, provided that the returned media have not been subject to misuse, damage or excessive wear.

Return defective media to point of purchase. You must include a dated proof of purchase, a brief statement describing the defect, and your return address. Majesco Sales, Inc. does not warrant that the Sega Genesis Cartridge will meet the purchaser's specific requirements.

ANY STATEMENTS MADE CONCERNING THE UTILITY OF THE SEGA GENESIS CARTRIDGE ARE NOT TO BE CONSTRUED AS EXPRESS OR IMPLIED WARRANTIES. THIS WARRANTY IS IN LIEU OF ALL OTHER WARRANTIES, WHETHER ORAL OR WRITTEN, EXPRESS OR IMPLIED. ANY IMPLIED WARRANTIES, INCLUDING IMPLIED WARRANTIES OF MERCHANTABILITY AND FITNESS FOR A PARTICULAR PURPOSE, ARE EXCLUDED.

IN NO EVENT WILL MAJESCO SALES, INC. BE LIABLE FOR INCIDENTAL OR CONSEQUENTIAL DAMAGES OF ANY KIND IN CONNECTION WITH THE GENESIS CARTRIDGE.

Some states do not allow the exclusion or limitation of incidental or consequential damages or limitations on how long an implied warranty lasts, so the above limitation or exclusion may not apply to you. This warranty gives you specific legal rights, and you may also have other rights which vary from state to state. Address all correspondence to: Majesco Sales, Inc., 244 Fernwood Ave. Edison, NJ 08837, or call (908) 225-8910

SEGA and Genesis are registered in the U.S. Patent and Trademark Office. Sonic the Hedgehog 3, Eternal Champions, Ecco The Tides of Time, Super Monaco, Vectorman and all related characters and indicia, are trademarks of SEGA. TAG MANIA, characters, names, and related indicia are trademarks of Warner Bros. Inc. LIONEL LINCS, characters, names and all related indicia are trademarks of Warner Bros. ©1997 X-Men and the distinctive likenesses thereof are TM & ©1997 Marvel Entertainment Group, Inc., and are used with permission. TM & ©1997 Saban Entertainment, Inc. and Saban International N.Y. All rights reserved. Saban's Mighty Morphin Power Rangers and all logos, character names and distinctive likenesses thereof are trademarks of Saban Entertainment and Saban International N.Y. ©1997 SEGA. All rights reserved. Distributed by Majesco Sales, Inc. 254 Fernwood Avenue, Edison, NJ 08837 908-426-8015

Printed in USA