

Trouble Shooting

Model Name: P620DLS & P621DLS

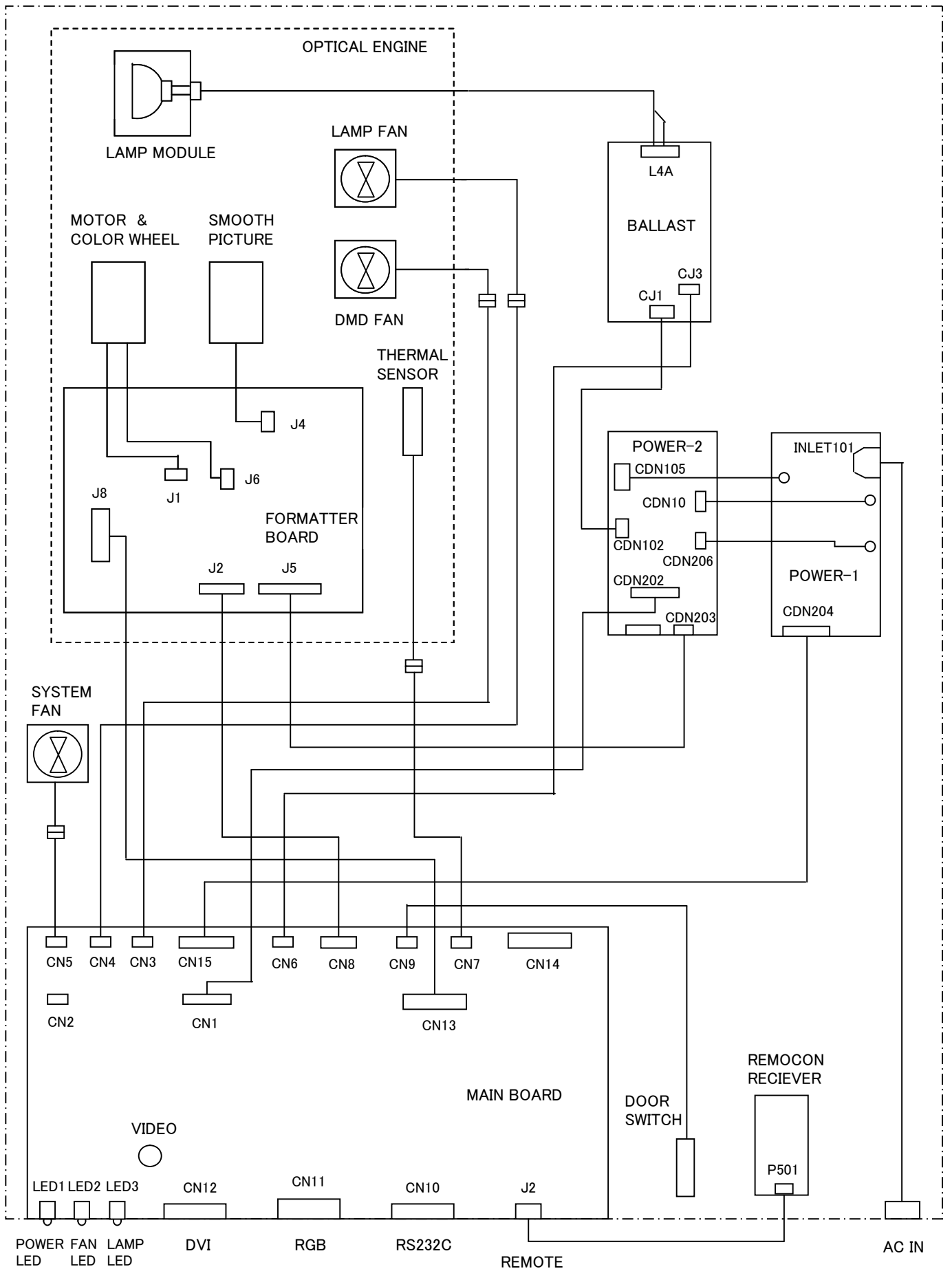
P620DLS : 200-6017 DLP PJTN DSPL 62W TYPE

P621DLS : 200-6017-01 DLP PJTN DSPL 62W TYPE STR

Date : Dec. 9. 2008

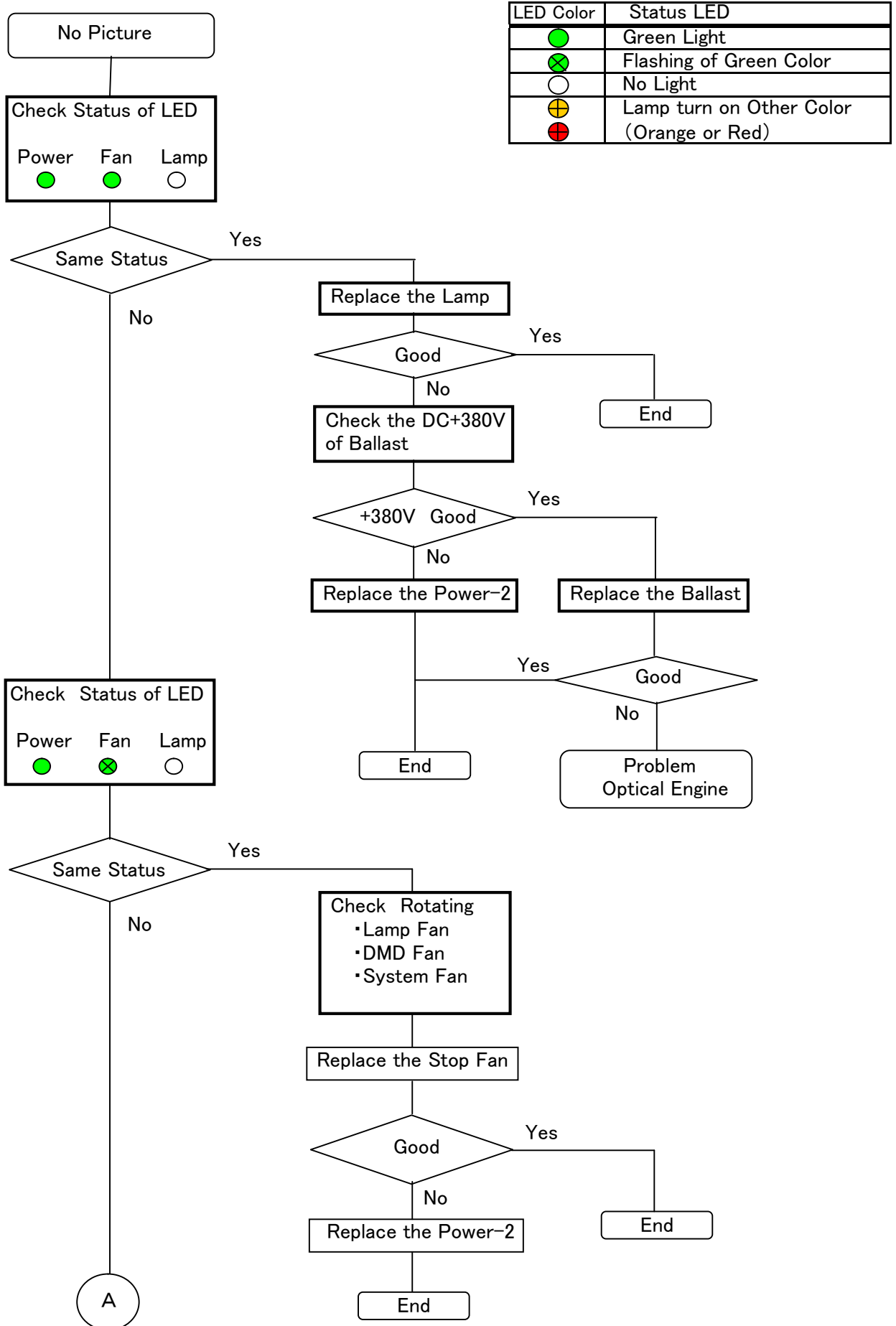
Toshiba Visual Equipment Corporation.

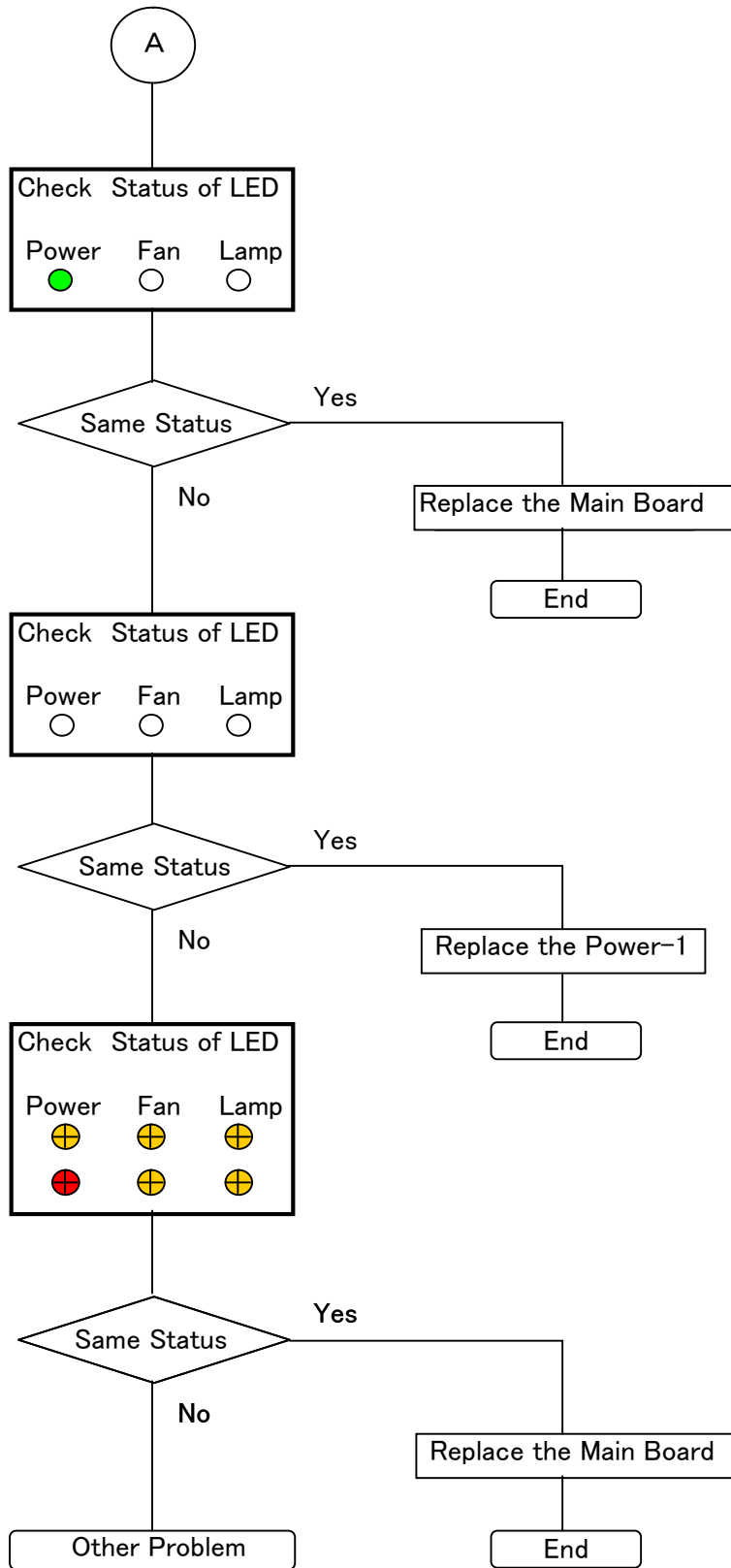
1 Block Diagram



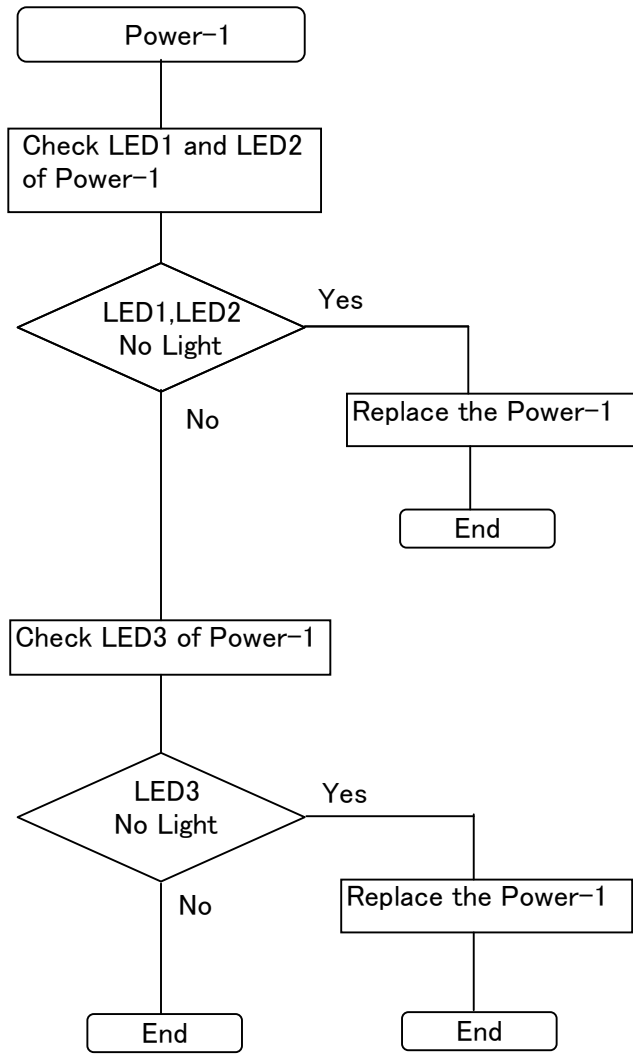
2 Problem

2-1 No Picture

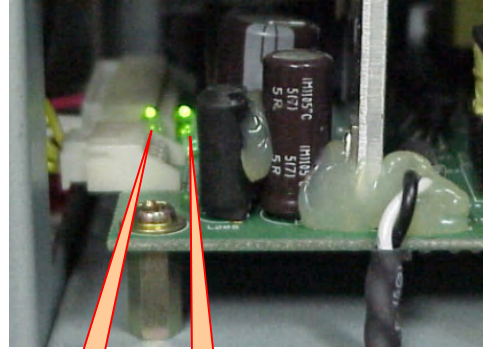




2-2 Power-1 Module



Power-1: ZAPPA400-FB



LED1

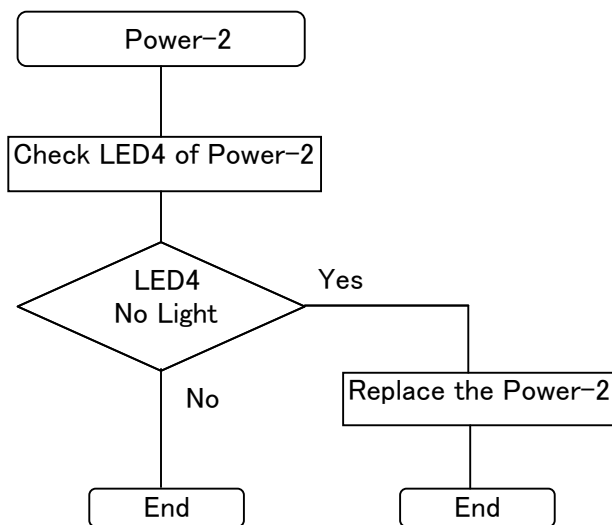
LED2

Power-1: ZAPPA400-FB

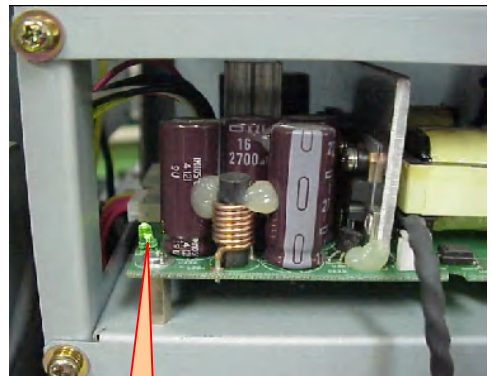


LED3

2-3 Power-2 Module



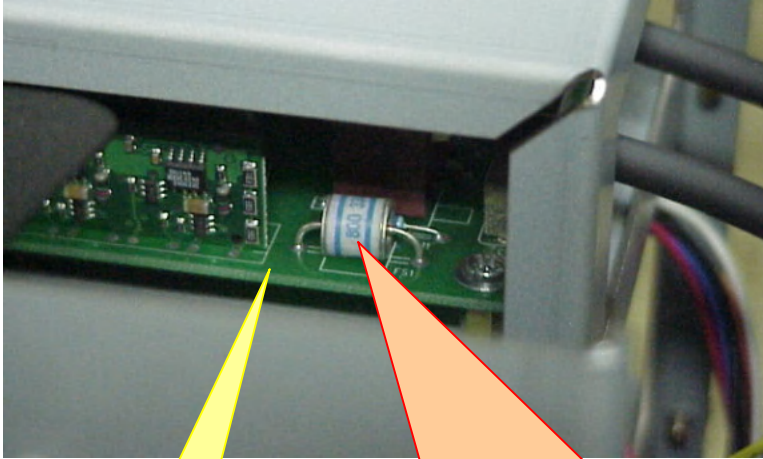
Power-2: ZAPPA400-MB



LED4

2-4 Ballast Module or Power-2 Module

2-4-1 Check do Discharge Tubu of Ballast Madule.



Ballast Module

Check do Dischage Tubu.

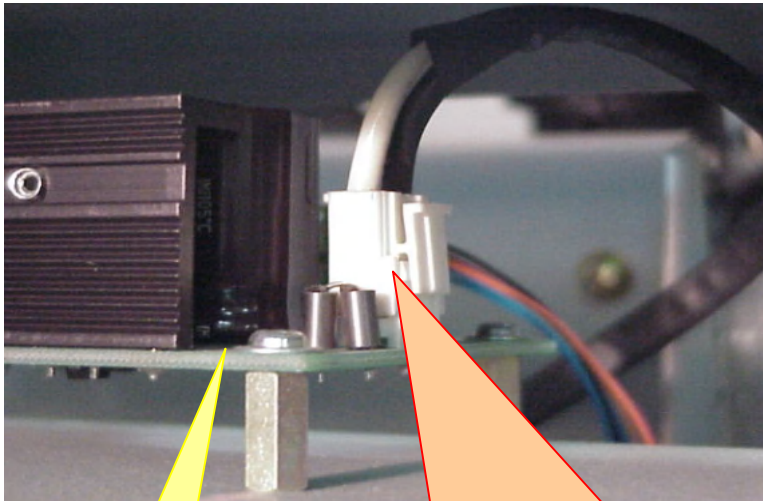
- Does a discharge tube glitter?

- Yes: Replace the Lamp

- No: Check the +380V

- If a discharge tube glitters, Ballast and Power-2 is Good.

2-4-2 Check Point of DC+380V of Ballast Module.



Ballast Module

Check do DC+380V

- Measure whether the voltage of DC+380V comes in a tester.

- White Wire: GND , Black Wire: Plus

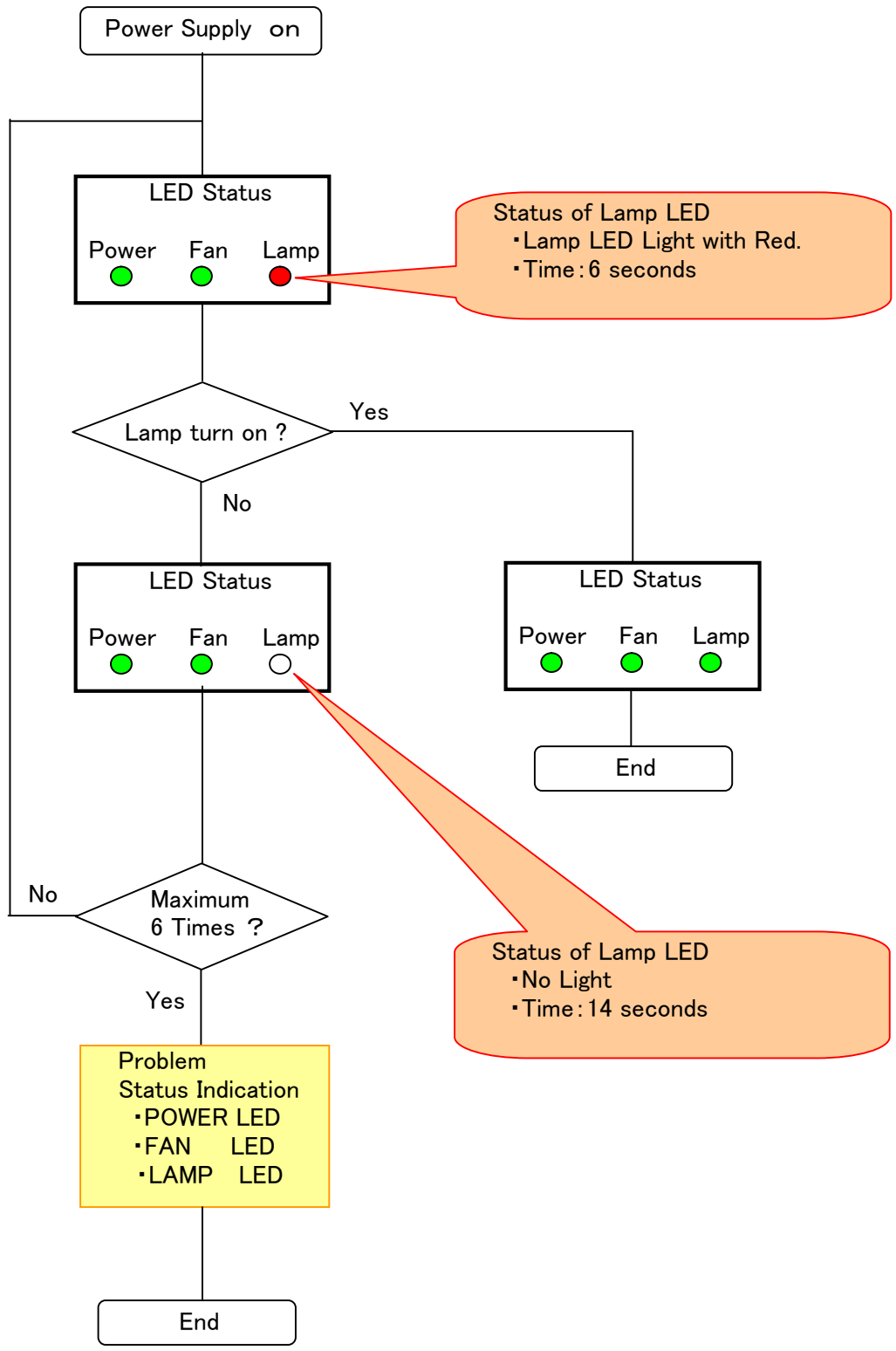
- **Attention**: Ballast Module is Hot Circuit.

- If DC+380V comes, Power-2 is Good.

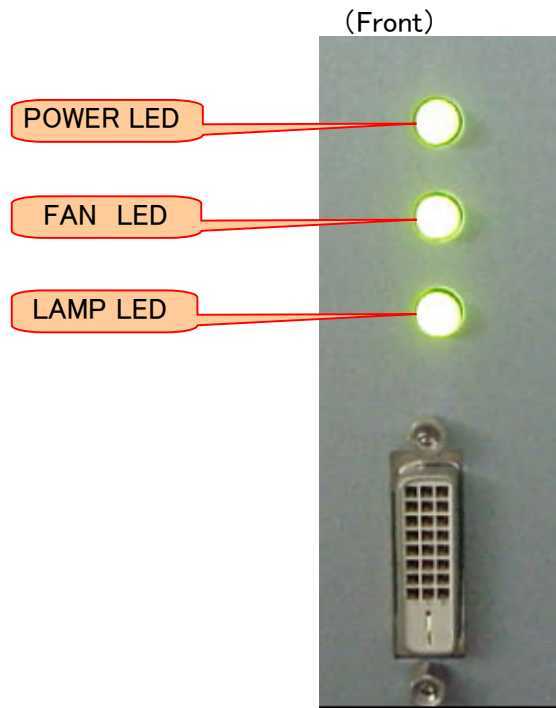
- If DC+380V no comes, Power-2 is no Good.

3 No Problem

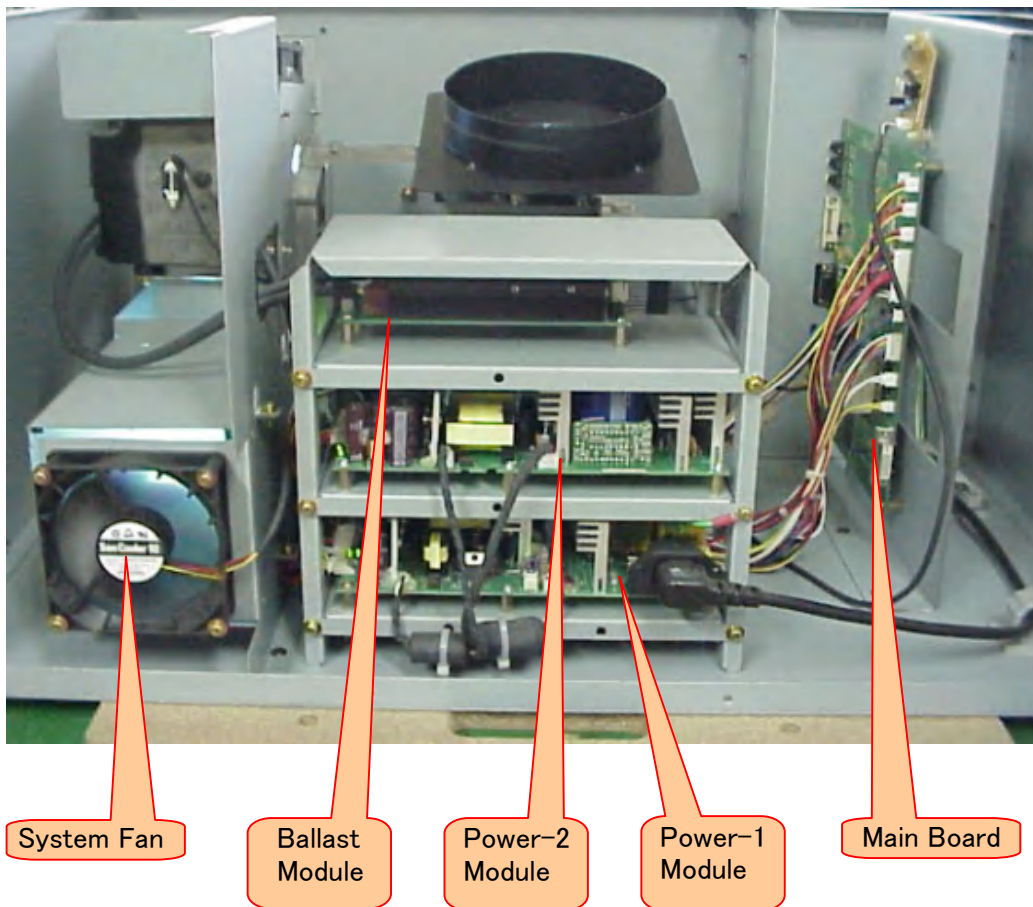
3-1 Lamp lighting handling of power supply on.



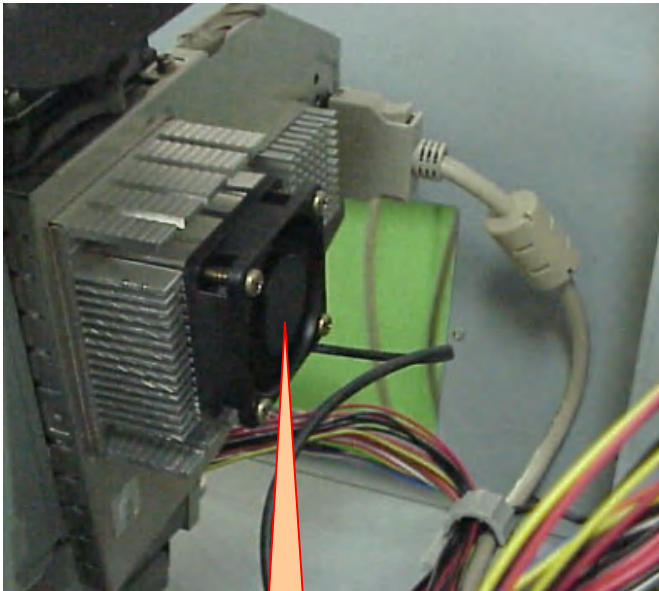
4 Structure
4-1 Status LED



4-2 Module and System Fan

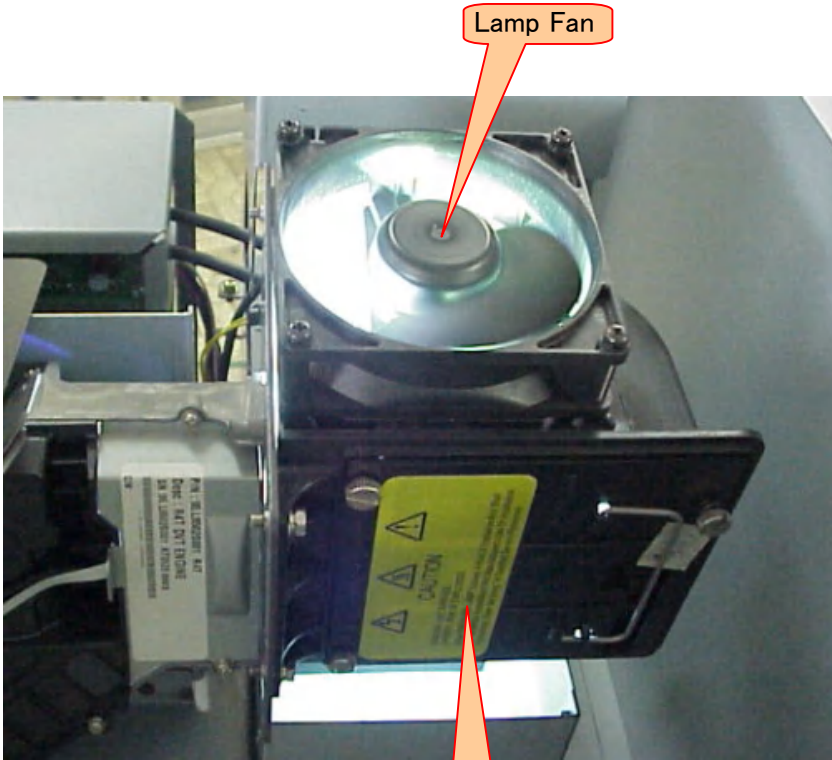


4-3 DMD Fan



DMD Fan

4-4 Lamp Module and Lamp Fan



Lamp Fan

Lamp Module

5 Service Part List

No.	Product Name	Service Part Name	Type Name
1	Ballast Power	HD4 LAMP BALLAST	PT VIP 2AC/380 01
2	Lamp Module	LPD620 (DLP-P-VIP-LAMP)	Lamp : P-VIP 100/120 1.3 E23h
3	DMD Fan	HD4 DMD FAN	GM1205PFV-3
4	Lamp Fan & System Fan	HD4 LAMP FAN	9AH0912M4D05
5	Power Module	Power-1	HD4 POWER UNIT
		Power-2	ZAPPA400-FB
6	Main Board	HD4 MAIN BOARD	ZAPPA400-MB
			Altair ARK02