

SEGA®

GHOST SQUAD EVOLUTION™

Global-Humanitarian-Operation&Special-Tactics

THERE'S
A NEW
SQUAD
IN TOWN

IT'S BACK...

LIFE-LIKE
VIOLENCE
STRONG

©SEGA

...AND BETTER THAN EVER

A new crop of top dogs has evolved into the next generation of high-security Special Forces, that is the G.H.O.S.T. Squad. With more skill and brawn than their predecessors, the new squad has been called for higher-threat missions with bigger guns and bad-a\$\$ threads.

G.H.O.S.T. SQUAD



NAME: CLASSIFIED
TEAM: ALPHA BLUE
HEIGHT: TOP SECRET
WEIGHT: UNKNOWN
WEAPON OF CHOICE: MACHINE GUN



MISSION 1



MISSION 3



STAKE OUT



WHOEVER SAID A PANDA SUIT WASN'T TOUGH?



TWO PLAYER ACTION

LINDBERGH HARDWARE - MISSIONS HAVE NEVER SEEMED SO REAL

12 MORE LEVELS - 16 PLAYER-SELECTED STAGES WITH ESCALATING DIFFICULTY

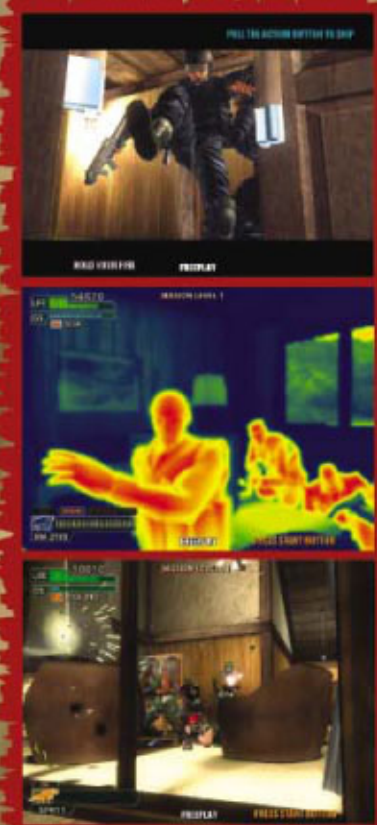
10 NEW OUTFITS - 14 UNIFORMS OR DISGUISES TO CHOOSE FROM

21 NEW WEAPONS - 25 BIG BOY GUNS TO SELECT FROM

NEW SUB-MACHINE GUN CONTROLLER WITH RECOIL, ACTION BUTTON AND FIRE SETTINGS (SINGLE SHOT, 3 BURST SHOT, AUTOMATIC)

SPECIAL EQUIPMENT AND TACTICAL MANEUVERS:

- NIGHT VISION
- FLASHLIGHT - MOUNTED GUN
- SNIPER RIFLE
- HAND GUN COMBAT



DELUXE CABINET (PROTOTYPE SHOWN)



STANDARD CABINET (PROTOTYPE SHOWN)

SEGA AMUSEMENTS USA, INC.
800 ARTHUR AVE.
ELK GROVE VILLAGE, IL 60007-8215
TEL: (847) 384-8787
FAX: (847) 427-1078
TOLL-FREE: 1-888-877-8888
<http://www.segasega.com>

SEGA
LINDBERGH
Am2
AM2
© SEGA