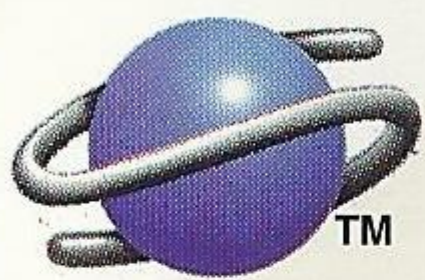


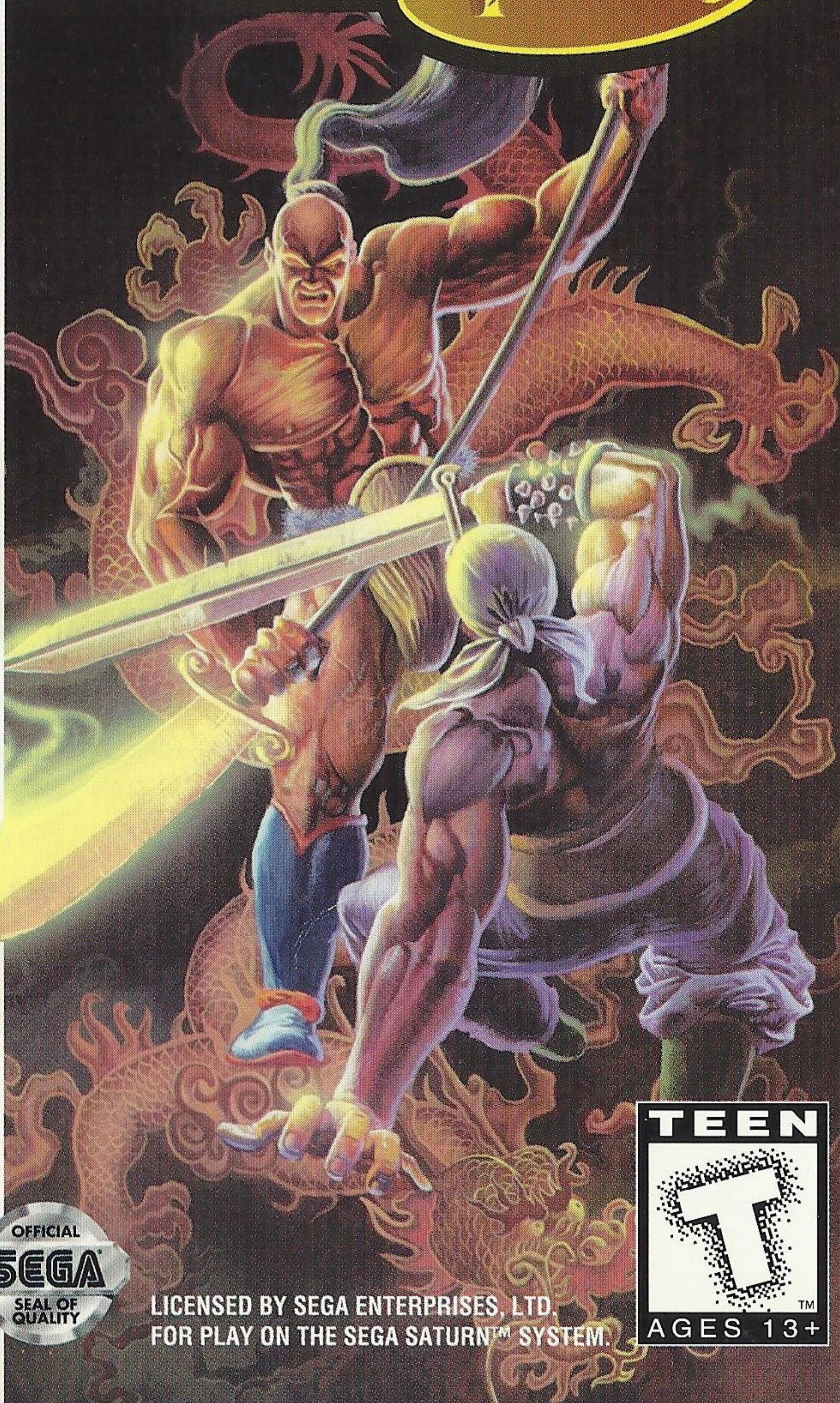
SEGA™

DATA EAST

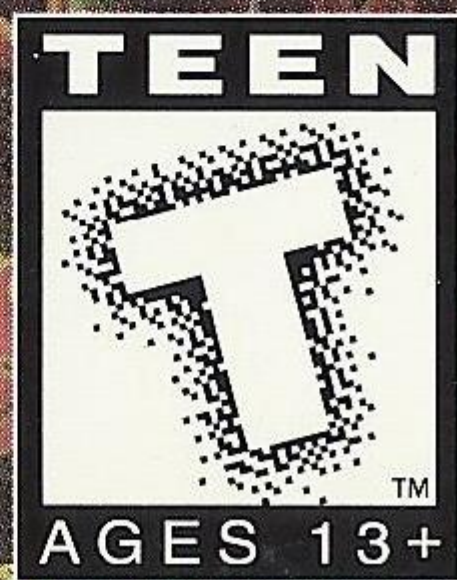


SEGA SATURN™

DARK LEGEND™



LICENSED BY SEGA ENTERPRISES, LTD.
FOR PLAY ON THE SEGA SATURN™ SYSTEM.



T-1305H

HANDLING YOUR COMPACT DISC

- The Sega Saturn disc is intended for use exclusively with the Sega Saturn™ system.
- Do not bend it, crush it, or submerge it in liquids.
- Do not leave it in direct sunlight or near a radiator or other source of heat.
- Be sure to take an occasional recess during extended play, to rest yourself and the Sega Saturn compact disc.
- Keep your Sega Saturn compact disc clean. Always hold it by the edges and keep it in its case when not in use. Clean with a lint-free, dry soft cloth — wiping in straight lines from center to edge. Never use solvents or abrasive cleaners.



WARNING: READ BEFORE USING YOUR SEGA VIDEO GAME SYSTEM

A very small percentage of individuals may experience epileptic seizures when exposed to certain light patterns or flashing lights. Exposure to certain patterns or backgrounds on a television screen or while playing video games may induce an epileptic seizure in these individuals. Certain conditions may induce undetected epileptic symptoms even in persons who have no history of prior seizures or epilepsy. If you, or anyone in your family, has an epileptic condition, consult your physician prior to playing. If you experience any of the following symptoms while playing a video game — dizziness, altered vision, eye or muscle twitches, disorientation, loss of awareness, any involuntary movement or convulsions — IMMEDIATELY discontinue use and consult your physician before resuming play.

WARNING TO OWNERS OF PROJECTION TELEVISIONS

Still pictures or images may cause permanent picture-tube damage or mark the phosphor of the CRT. Avoid repeated or extended use of video games on large-screen projection televisions.

This product has been rated by the Entertainment Software Rating board. For information about the ESRB rating, or to comment about the appropriateness of the rating, please contact the ESRB at 1-800-771-3772.

This official seal is your assurance that this product meets the highest quality standard of SEGA™. Buy games and accessories with this seal to be sure that they are compatible with the SEGA SATURN™ SYSTEM.



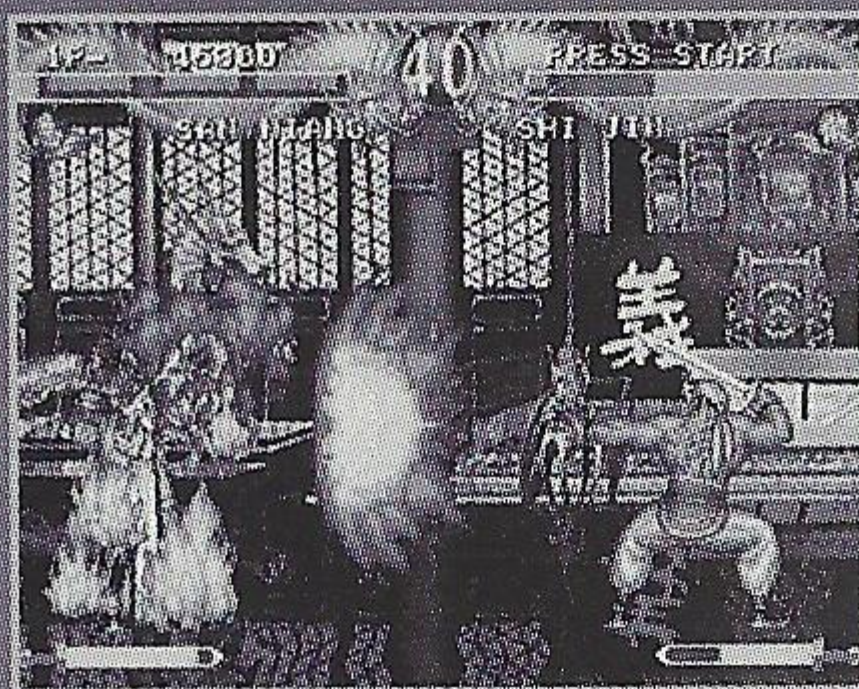
Contents

The Story2
Getting Started3
Playing the Game4
Game Start.5
Controls5
Options6
Fighters7
Tipline14
Upcoming Titles15
Warranty16
Special Offer17

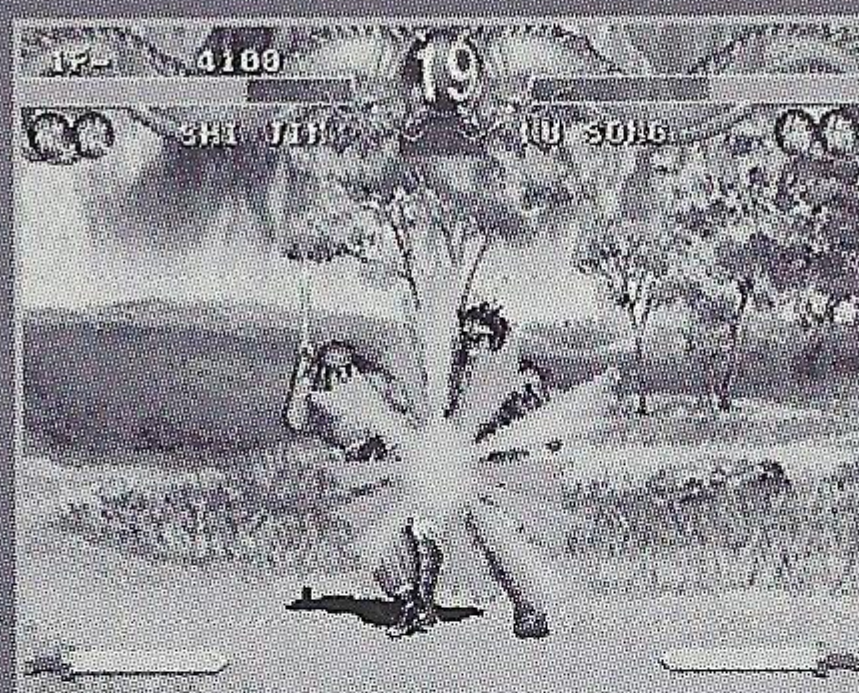
The Story



Generations have believed in the Chinese myth known as Dark Legend which took place sometime in the 11th or 12th century, during a time of complete anarchy. Power-hungry Warlords rebelled against the kingdom's rigid order.



To regain control of his kingdom, the emperor devised a cunning plan. He prepared the ultimate conquest for his most ambitious rivals, a challenge no Warlord could resist. The rewards would be unimaginable: the victor would be endowed with incredible abilities and ultimate power, as well as wealth beyond belief. The triumph would be absolute, as to lose is to die. Thousands of fearless warriors, each possessing special fighting powers, would come to battle.



The Dark Legend. . . .

Are you strong and wise enough to triumph in this ultimate challenge?

Getting Started

1. Set up your Sega Saturn system as described in its instruction manual. Plug in Control Pad 1 and 2.



2. Place the Dark Legend disc, label side up, in the well of the CD tray and close the lid.

3. Turn on the TV or monitor and the Sega Saturn. The Sega Saturn logo will appear on the screen. (If nothing happens, turn the system off and make sure it is set up correctly before turning it on again).

4. If you wish to stop a game in progress, or the game ends, press the Reset Button on the Sega Saturn console then press the Reset Button after the Sega Saturn logo sequence plays, to display the on-screen Control Panel.

IMPORTANT:

Your Sega Saturn CD contains a security code that allows the disc to be read. Be sure to keep the disc clean and handle it carefully. If your Sega Saturn system has trouble reading the disc, remove the disc and wipe it carefully, starting from the center of the disc and wiping straight out towards the edge.

Playing the Game

In the Mode Screen, you can select the game mode and the number of players.

SPECIAL MODE

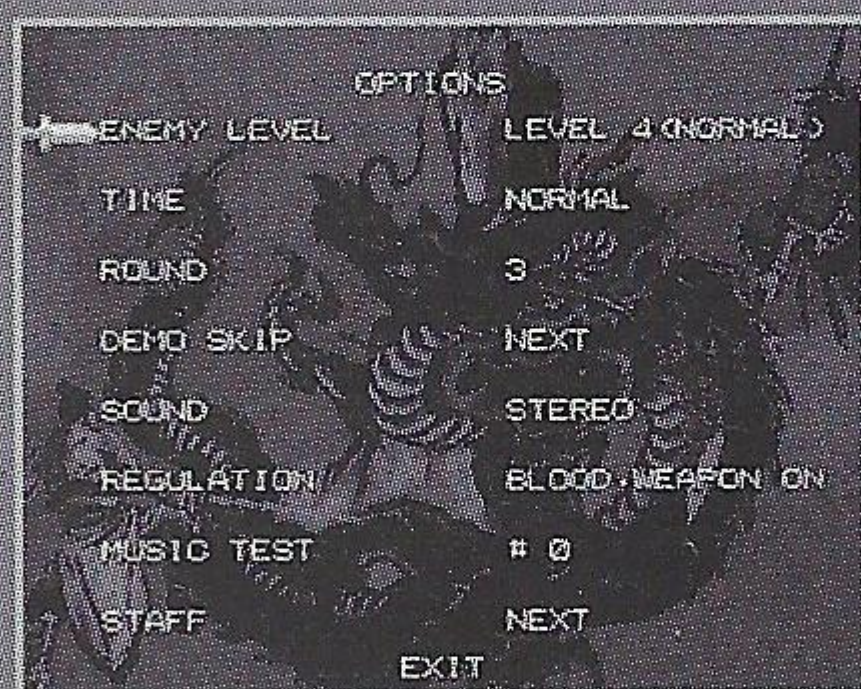
This mode has more special moves. BEGINNER MODE is added, which is easier.

BEGINNER MODE

To Play Beginner Mode, press both the L and R Buttons after selecting a character.

2P BATTLE

In 2P Competitive Mode, you can select the characters and numbers of rounds. BEGINNER MODE can also be selected here.



Game Start

Select the game using the Control Pad and press the A Button or C Button to play the game.

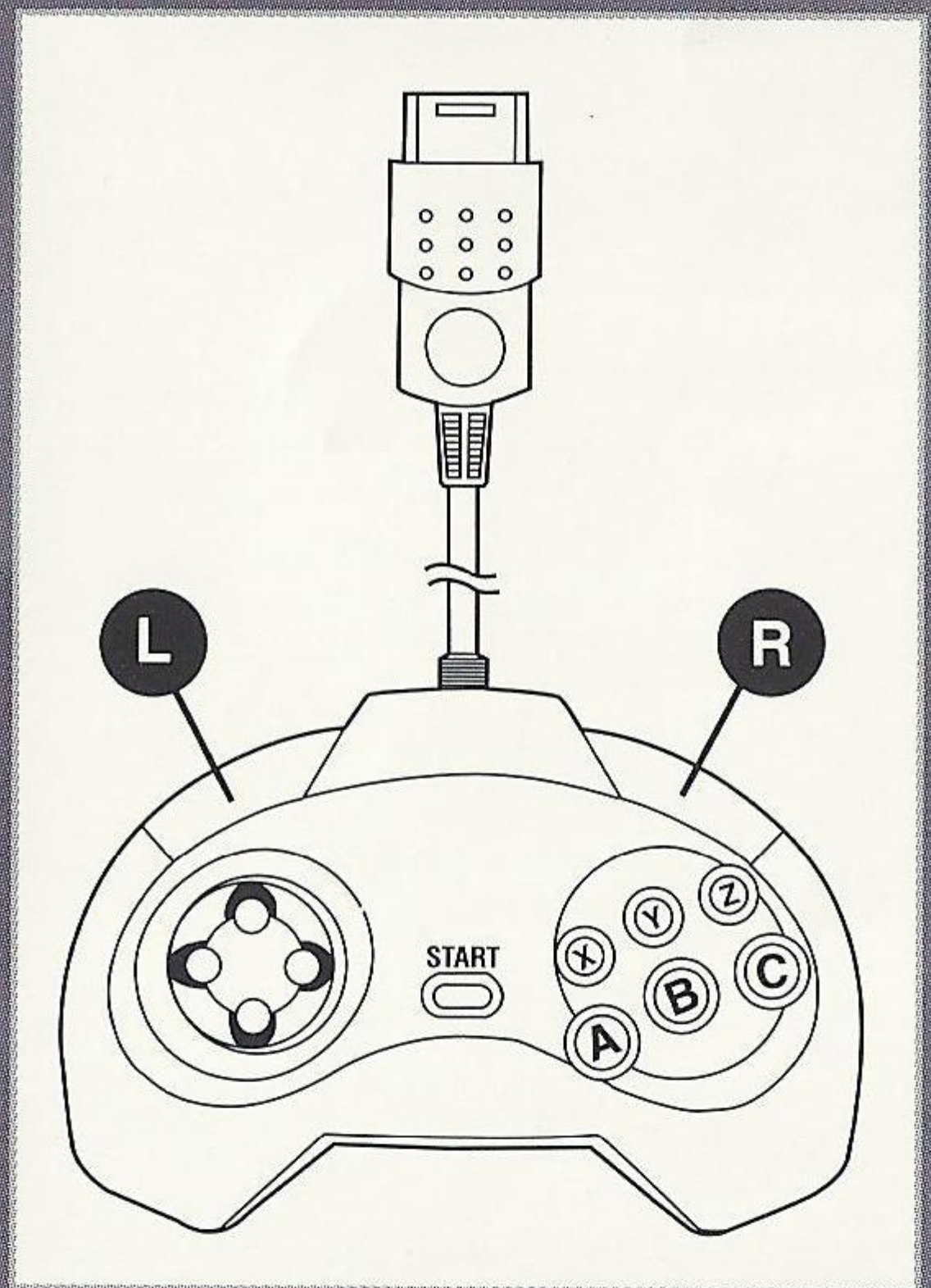
Controls

Control Pad

Left	Character moves forward
Right	Character moves back
Up	Character jumps
Down	Character squats
START	Setting up;

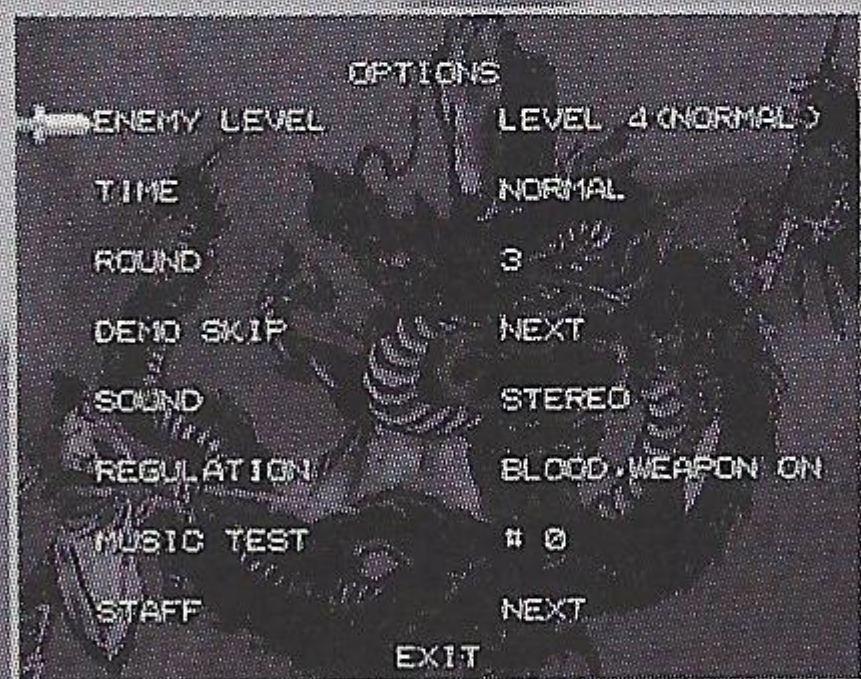
Pause

A Button	Weak Kick
B Button	Medium Kick
C Button	Strong Kick
X Button	Weak Punch
Y Button	Medium Punch
Z Button	Strong Punch
L & R Button	Select BEGINNER MODE



Options

In the Options Screen, you can set up a character's strength and number of rounds.



DIFFICULTY

Select the difficulty of the CPU from 1st level (easy) to 7th (hard).

TIME

Select SLOW, NORMAL, FAST or INFINITE.

ROUND

Select the number of rounds.

CONTROL

Customize the Control Pad.

HANDICAP

Adjust your handicap. The lower the number, the weaker the character.

SOUND

Select either Stereo or Mono mode.

MUSIC TEST

Music soundtrack test.

VOICE AND SOUND EFFECTS TEST

Voice and Sound Effects testing.

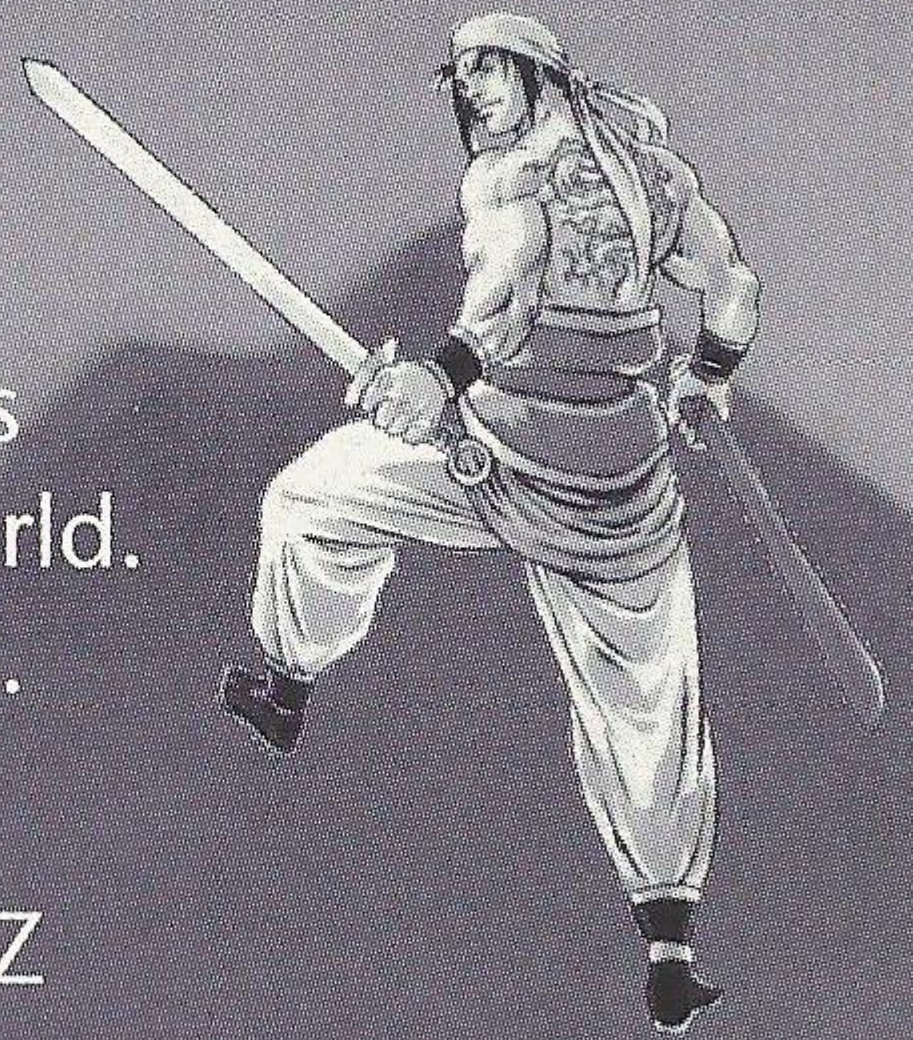
WEAPON GAUGE

Each Weapon Gauge indicates durability. When the gauge reaches Zero (0), the weapon is destroyed.

Fighters

SHI JIN

A master in the Martial Arts with a dragon tattoo on his back. He was brought up like a tender plant and is inexperienced in the ways of the world. He is a mighty fighter using a sword.



Flying Serpent Missile

Down, Down Right, Right + X, Y or Z

Flaming Serpent Sword

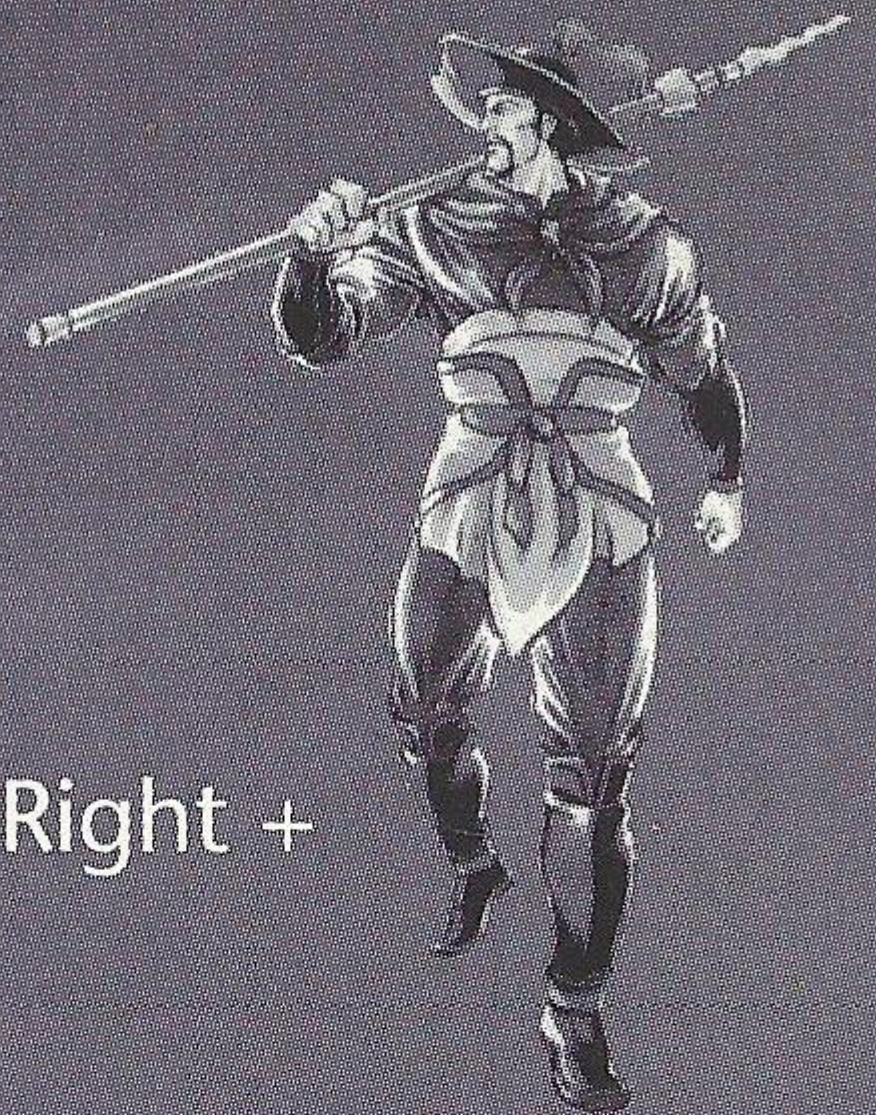
Right, Down, Down Right + X, Y or Z

Knee Kick

Down, Up + A, B or C

LIN CHONG

A master of Stick Fighting, he has a cruel past. Acts of betrayal and the death of his wife weigh heavily on his mind.



Savage Panther Claw

Left, Down Left, Down, Down Right, Right + X, Y or Z

Typhoon Spear

Right, Down Right, Down, Down Left, Left + X, Y or Z

Invincible Rapid Fire

Press X, Y or Z repeatedly

Special Kicks

- Right, Down, Down Right + A, B or C
- Right, Down Right, Right + A, B or C
- Right + C Button

Fighters



HU SAN NIANG

A master female fighter who uses two swords. Her movements can be quick, sharp, and deadly but she tends to take pity upon those who are weak and miserable. She likes to stay in the LIANGSHAN SONG JIANG since there are many brave men there.

Flaming Jasmine Wave

Down, Down Right, Right + X, Y or Z

Samsara Kick

Down, Down Right, Right + A, B or C

Typhoon Slasher

Right, Down, Down Right + X, Y or Z



DAI ZONG

Thoughtful to his friends, this master fighter moves quickly and has the ability of "Majestic Teleport." His special ability allows him to jet "KI (Spiritual Air)."

Majestic Teleport

Right, Down Right, Down, Left Down,
Left + A, B, C

Flaming Jasmine Wave

Down, Down Right, Right + X, Y or Z

Samsara Kick

Down, Down Right, Right + A, B or C

Fighters

LI KUI

This dark giant throws two huge axes and is reckless, rash and extremely dangerous. His attack is as powerful as it is destructive.

Mandarin Earth-Splitter

Down, Down Left, Left + X, Y or Z

Scorching Breath

Right, Down, Down Right + X, Y or Z

Black Death Blizzard

Left, Down Left, Down, Down Right, Right + X, Y, Z



LU ZHI SHEN

A master with the heavy sword, he likes Japanese Sake almost as much as violence. Along with his various special tricks, he also takes the advantage with the length of his sword.

Flying Shadow Attack

Down Left, Hold Right + X, Y or Z

Manchurian Fang

Down, Down Left, Left + X, Y or Z

Silkworm Slash Mid-Air

Right, Left, Right + X, Y or Z



Fighters

GONG SHUN SHENG

Through his Taosist training, he has the ability to make winds and thunderbolts do his bidding. He is clumsy but extremely likeable.

Earth Scorcher

Down, Down Right, Right + A, B, C, X, Y or Z

Horrifying Hellraiser

Left, Hold Right + X, Y or Z

Mongolian Bear Hug

approach opponent, then Left, Down Right, Down, Down Left, Left, Down + X, Y, or Z

WU SONG

He is so dynamic that he can kill a huge tiger with his bare hands. His special tricks include hitting with two sticks and a superb throw. However he is not a bad guy. He possesses a special repeat attack combining hits with throws.

Shredding Talon

Down, Down Left, Left + A, B or C

Crushing Tiger Claw

Right, Down, Down Right + A, B, C, X, Y or Z

Doomsday Dragon

approach opponent, then Left, Down Left, Down, Down Right, Right + X, Y or Z

Fighters

RUAN XIAO ER

Although older than his two brothers, RUAN XIAO WU and RUAN XIAO QI, his physical strength is weaker. Even though he can be pleasant and well-mannered, he is equally adept at psychological tactics and gambling.



Shao Lin Slash and Burn

Left, Hold Right + X, Y or Z

One-Handed Skullcrusher

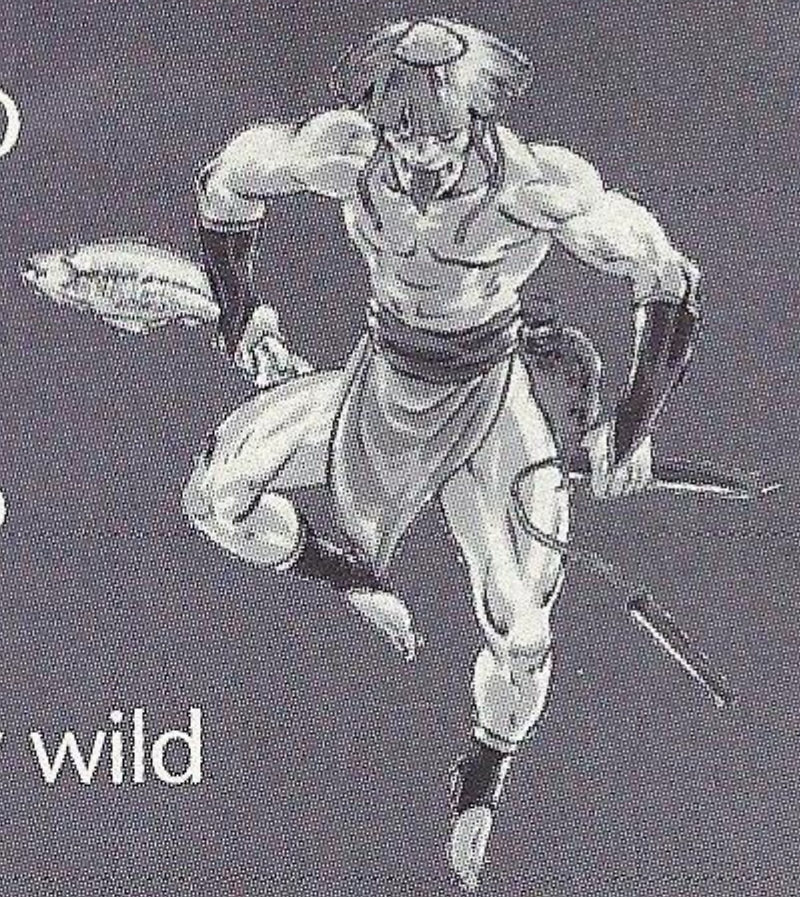
Down, Up and X, Y or Z

Water Torture

Left, Down Left, Down, Down Right, Right + A, B, C

RUAN XIAO WU

The off-beat brother in the RUAN XIAO clan. He dresses funny, is selfish, and looks like a mutant with a water whip. He uses frogs and fishes as weapons to keep opponents at bay along with the water whip. Each of his attacks are very wild and powerful.



Punishing One-Two

Down, Down Right, Right + X, Y or Z

Brilliant Storm

Down Left, Down, Down Right, Down, Down Left + A, B or C

Phantom Cyclone Stinger

Right, Down Right, Down, Down Left, Left + X, Y or Z

Fighters

RUAN XIAO QI



The youngest of the RUAN XIAO brothers. He is a muscular guy with an attitude. His attacks are quick and repetitive using the Nunchucks.

Shao Lin Slash and Burn
Left, Hold Right + X, Y or Z

Peking Jawbreaker

Right, Down, Down Right + A, B or C

Triple-Leg Deathtrap

Down, Down Left, Left + A, B or C

CHAO GAI



He is the second king of LIANGSHAN SONG JIANG and is the reason why many fighters have gathered here. He is known as the "ugly king", not only because of his personality, but because of the fact he was shot in the face by a poison arrow during a battle to the death. Legend has it that he returned from the dead — no one knows how, except himself.

Before Transformation

Blowing Fire

Down, Down Right,
Right + X, Y or Z

Fighters

Dashing Kick

Down, Down Left,
Left + A, B or C

Blowing His Miniatures

Down, Down Left,
Left + X, Y or Z

After Transformation

Dashing Kick

Down, Down Left, Left + A, B or C

Throwing Arrows Upwards

Right, Down, Down Right + X, Y or Z

Harden Body and Repel Opponents' Attacks

Tipline

LEARN ALL THE LATEST TRICKS AND HIDDEN MOVES! Call the Data East Tipline for hints & tips on all Data East games!

1-900-454-5help
85¢ maximum charge.

TO ORDER ANY DATA EAST GAME MANUAL,
send \$3.00 per manual to:

DATA EAST
1850 Little Orchard Street
San Jose, CA 95125

Send SASE with check or money order. Please do not send cash.

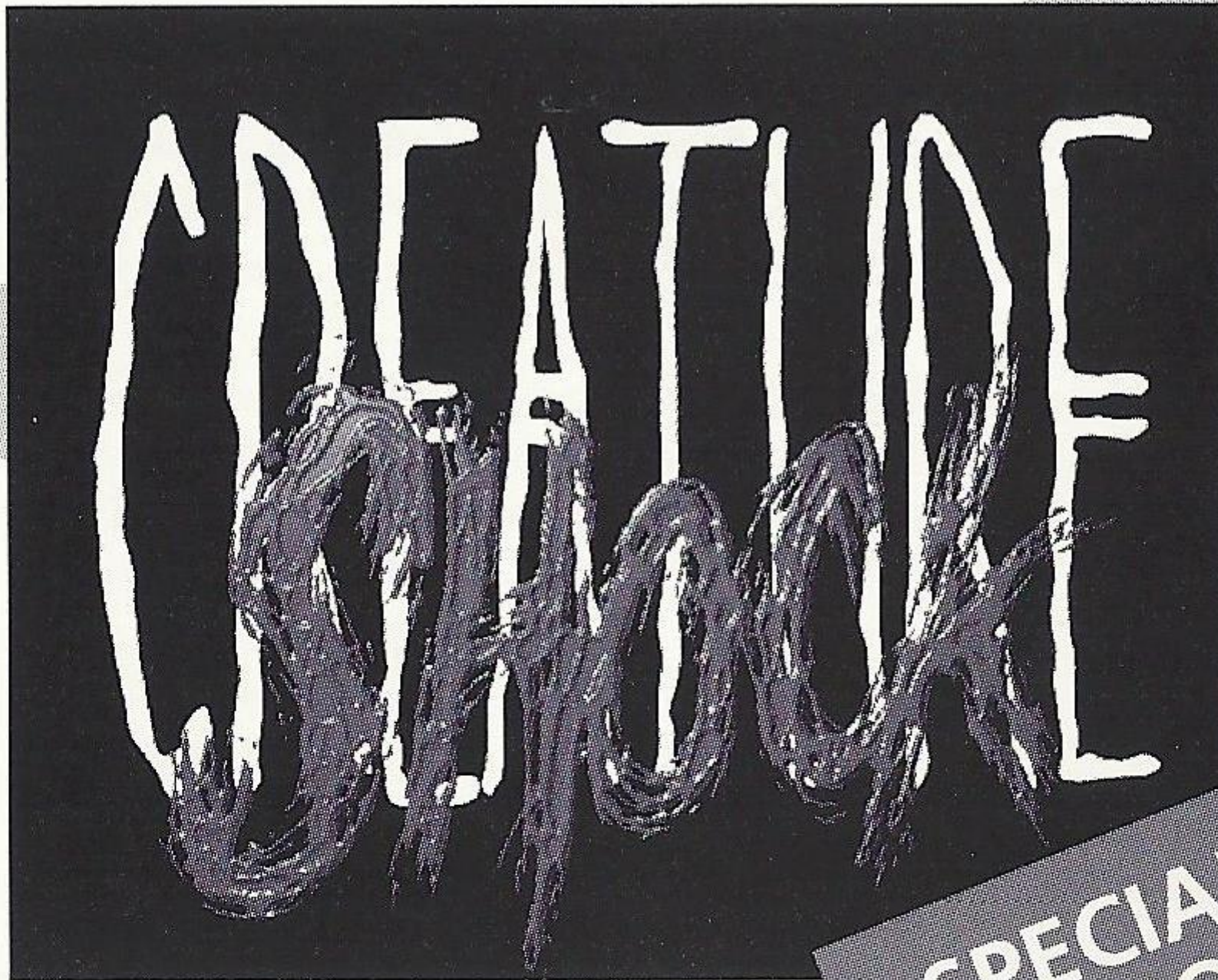
Data East product information and support is available 24 hours per day on the CompuServe Information Service in the VIDEO GAME PUBLISHERS FORUM (type GO DATA-EAST).

UPCOMING TITLES FOR THE SEGA SATURN™



SHATTERED LANDS

DEFCON™
5



SPECIAL
EDITION

TM

Defcon 5 is a registered trademark of Millennium Interactive, Ltd. 1995 and licensed to Data East USA, Inc. Creature Shock is the copyright of Argonaut Software licensed to Data East USA, Inc.

Advanced Dungeons & Dragons®, Dark Sun®, the TSR logo, and all TSR characters, character names and their distinctive likenesses thereof, are trademarks owned by and used under license from TSR, Inc. © 1995 TSR © 1995 Strategic Simulations and sublicensed to Data East USA, Inc.

Warranty

Data East USA, Inc. warrants to the original purchaser only that the CD provided with this manual and the software program coded on it will perform in accordance with the descriptions in this manual when used with the specified equipment, for a period of ninety (90) days from the date of purchase. If this program is found to be defective within 90 days of purchase, it will be replaced. Simply return the CD to Data East USA, Inc. or its authorized dealer along with a dated proof of purchase. Replacement of the CD, free of charge to the original purchaser (except for the cost of returning the CD) is the full extent of our liability. THIS WARRANTY IS IN LIEU OF ALL OTHER WARRANTIES, WHETHER ORAL OR WRITTEN, EXPRESS OR IMPLIED. ALL IMPLIED WARRANTIES, INCLUDING THOSE OF MERCHANTABILITY AND FITNESS FOR A PARTICULAR PURPOSE, IF APPLICABLE, ARE LIMITED IN DURATION TO 90 DAYS FROM THE DATE OF PURCHASE OF THIS PRODUCT.

Data East USA, Inc. shall not be liable for incidental and/or consequential damages for the breach of any express or implied warranty including damage to property and, to the extent permitted by law, damages for personal injury, even if Data East USA, Inc. has been advised of the possibility of such damages. Some states do not allow the exclusion or limitation of any incidental or consequential damages or limitations on how long an implied warranty lasts, so the above limitations or exclusions may not apply to you.

This warranty shall not be applicable to the extent that any provision of this warranty is prohibited by any federal, state or municipal law which cannot be preempted. This warranty gives you specific legal rights and you may also have other rights which vary from state to state.

Data East USA, Inc., 1850 Little Orchard Street, San Jose, California 95125.
(408) 286-7080.

Patents: U.S. Nos. 4,442,486/4,454,594/4,462,076/5,371,792; Europe No. 80244; Canada Nos. 1,183,276/1,082,351; Hong Kong No. 88-4302; Germany No. 2,609,826; Singapore No. 88-155; U.K. No. 1,535,999; France No. 1,607, 029; Japan No. 1.632,396

DATA EAST PRESENTS

TRADE-IN MANIA

Here's the Deal!

Return any used Sega, Nintendo or Sony game and receive \$10 credit when you purchase any available Data East game directly from us. Call (408) 286-7080, ext. 23 and we'll tell you about the hottest new releases from Data East (prices too).

1. Decide which game you want.
2. Send your used game (including box and manual) with a check or money order for \$49.95 (we'll handle tax and shipping) to:

DATA EAST USA, INC.
1850 Little Orchard Street
San Jose, CA 95125

DATA EAST will not be responsible for lost or stolen merchandise. We recommend sending packages via registered mail or other traceable means. To be eligible for the \$10 credit, the original game cartridge, box and manuals must be returned and you must not keep any copies of those items.

Shipping and appropriate sales tax will be paid by Data East. Offer good only while supplies last. Offer valid in USA only. Data East assumes no responsibility for lost, late, illegible, incomplete or postage due mail. Offer void where prohibited by law. Please allow 3-4 weeks for delivery. Offer subject to change without notice. Offer not sponsored by Sega.

Data East TRADE-IN MANIA!

I have enclosed the following games:

And a Check, Money Order for \$ _____

Name _____

Address _____

City _____ State _____ Zip _____

Daytime Phone _____



Sega and Sega Saturn are trademarks of SEGA ENTERPRISES, LTD. © 1995 Data East USA, Inc. Data East is a registered trademark of Data East USA, Inc. 1850 Little Orchard St. San Jose, CA 92125. This game is licensed for use with the Sega Saturn system only. Security Program ©SEGA 1994 All Rights Reserved. Unauthorized copying, reproduction, rental, public performance or broadcast of this game is a violation of applicable laws. Made and printed in the U.S.A. All rights reserved.