

# DETECTIVE'S MANUAL

**CONFIDENTIAL**

**ACME**  
DETECTIVE AGENCY



# DETECTIVE'S MANUAL

CONFIDENTIAL

**ACME**  
DETECTIVE AGENCY





Bottom left to right: Tony Lee, Dave Galloway, Mark Lange. Top left to right: Kevin Pickell, Erik Kiss, Stanley Chow.

## CREDITS

**Executive Producer:** Don Matrick  
**Development Producer:** Stan Chow  
**Producer:** Doug Barry  
**Assistant Producer:** Deborah Cook  
**Lead Programmer:** Erik Kiss  
**Development Team:** Kevin Pickell, Dave Galloway, Tony Lee  
**Sega Sounds & Technical Support:** Steve Hayes  
**Product Management:** Diane Flynn, Hunter Smith  
**Package Design:** Graphic Descriptions Inc.  
**Art Direction:** Nancy Fong  
**Testing:** Ivan Allan, Mark Lange, Jeff Haas  
**Documentation:** Matthew Leeds, Jamie Poolos  
**Documentation Layout:** Jennie Maruyama  
**Public Relations Manager:** Nicole Noland  
**Translation Services:** Alpha CRC, Ltd.  
**Quality Assurance:** Kevin Hogan  
**Original Program Code & Art:** Bröderbund Software, Inc.  
**Original Design:** Gene Portwood, Lauren Elliot

## CONTENTS



1. Starting the Game .....	2
2. Controls .....	2
3. Letter of Offer .....	3
3. Get on the Case Fast! .....	4
4. Memo .....	9
5. Working at Acme .....	11
Signing in .....	11
Saving Your Current Rank .....	12
Starting a Game at a Saved Rank ..	12
Obtaining your assignment .....	13
The object of the game .....	14
6. Chronoskimmer User's Manual .....	16
Control Panel Buttons .....	16
To Travel .....	17
To Search for Clues .....	18
To Obtain or Enter Data .....	20
To Abort .....	22
7. From the Desk of the Chief .....	23
Tips From an Old Gumshoe .....	23
Deciphering Clues .....	24
Deciphering a Sample Clue .....	25

### WARNING TO OWNERS OF PROJECTION TELEVISIONS:

Still pictures or images may cause permanent picture-tube damage or mark the phosphor of the CRT (television screen). Avoid repeated or extended use of video games on large-screen projection televisions.

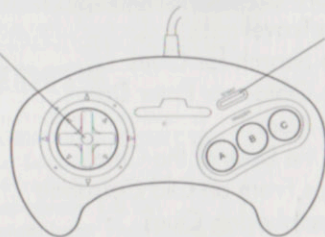


## STARTING THE GAME

1. Turn OFF the power switch on your Sega™ Genesis™. Never insert or remove a game cartridge when the power is on.
2. Make sure a Controller is plugged into the port labeled Control 1 on the Genesis Console.
3. Insert the game cartridge into the slot on the Genesis. To lock the cartridge in place, press firmly.
4. Turn ON the power switch. The Electronic Arts® logo appears (if you don't see it, begin again at step 1).
5. Press START to play.

## CONTROLS

Directional Pad



START Button

### • START BUTTON

-starts game

### • DIRECTIONAL PAD (D-PAD)

-moves cursor up-screen, right, left, down-screen

### • A, B & C BUTTONS

-select control panel buttons



## LETTER OF OFFER

Acme Detective Agency  
Time Crime Division  
Acme Bldg.  
San Francisco, California

Greetings:

Acme Detective Agency is pleased to have you on board as a Time Cadet in our Time Crimes Division. Please report immediately to the Personnel Department on the 2nd floor of the Acme Building to complete the necessary forms. You will report to a veteran agent during your probation period.

You will be eligible for all Acme employee benefits should you survive your initial period of employment. Promotions are based on merit and the ability to survive long enough to earn them.

Though the following information is not required reading, it is unlikely you will survive your first cases without it; and we here at Acme strive to do everything we can to insure your personal safety.

We're proud to have you join Acme, and we look forward to the significant contribution we know you will make to ensure a safer world.

Sincerely,

*Diane Caldicott*  
Diane Caldicott  
Personnel Manager



## GET ON THE CASE FAST!

- Load *Where in Time is Carmen Sandiego?*® The title sequence can be interrupted by pressing **A**, **B**, or **C**.

USE THE D-PAD TO MOVE THE ON-SCREEN ARROW TO THE BUTTON OF YOUR CHOICE, THEN PRESS **A**, **B**, OR **C** TO SELECT.

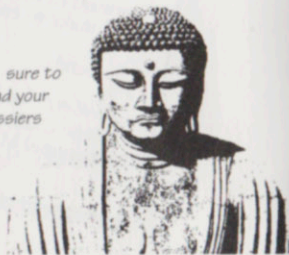
- First choose a language, then press **A**, **B**, or **C** to get on the elevator.
- **D-Pad** to select the second floor, then press **A**, **B**, or **C**.
- **D-Pad** left then press **A**, **B**, or **C** to enter Personnel.

For further information on getting started, turn to page 11 (Working At Acme).



Roman  
Empire  
crumbles

Be sure to  
read your  
dossiers



450

500

Chess invented in India

550



I've seen a lot in my  
wanderings, but  
nothing like that  
Carmen Sandiego!

600



- Selecting **SEARCH** will allow you to question witnesses or informants or scan the scene of the crime to discover clues to the criminal's next destination.

For a more detailed explanation of the **SEARCH** feature, turn to page 18 (To Search for Clues).



- Selecting **TRAVEL** lets you check the possible destinations from your current location. To travel to a new location, select a destination with the appropriate panel button.

For a more detailed explanation of the **TRAVEL** feature, turn to page 17 (To Travel).



When are they going to invent the chair?

600

Temple at Horyu-ji built

650

Nazca lines in Peru

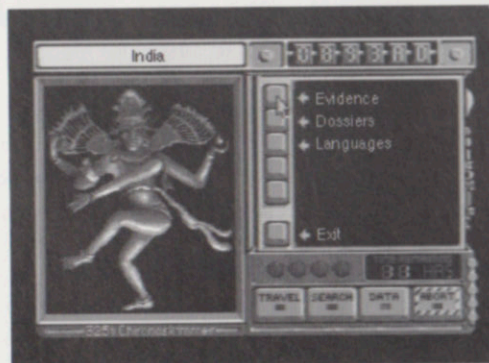
700

Anasazi Pueblos

750

Wang Wei paintings

800



- Selecting **Data** allows you to:
  - 1) enter clues to the suspect's identity
  - 2) check the Dossiers
  - 3) choose an alternate Language
  - 4) review the Chief's Briefing
- To enter clues select **EVIDENCE** and a character trait category, then use **A**, **B**, or **C** to cycle through character traits.



Don't forget Mom's birthday!



I'm going to get that tailor!



- To view a suspects' file select **DOSSIERS**, then use **A**, **B**, or **C** to cycle through the list of suspects.
- If at any time you think you have provided the Chronoskimmer enough information to identify the criminal, select **COMPUTE** (otherwise, **D-Pad** left or right to exit).
- To choose a different language (English, French, German, Italian or Spanish), select **LANGUAGES**, then select the language of your choice.
- To review the Chief's briefing, select **BRIEFING**. Keep in mind this option is available only at the first location of each case.

For a more detailed description of the DATA feature, turn to page 20 (To Obtain or Enter Data).



Russian Capital at  
Novgorod

800

850

900

950

1000



## MEMO

To: All Acme Offices  
From: The Chief  
Re: Sandiego, Carmen  
Villains International League of Evil

As you all know, Carmen Sandiego is the notorious ringleader of an international band of thieves which has caused a great deal of political turmoil throughout the world. Sandiego and her V.I.L.E. henchmen travel from one country to another, stealing priceless treasures. While we've been able to detain members of her previous mobs, there isn't a prison around that she hasn't charmed, bought or busted her way out of.

Now we've reached the final hour. Carmen and her gang have stolen the latest model time machine from a super-secret laboratory miles beneath the Nevada desert, and they're out to change the world. Not content with pillaging the present, they are using this technology to loot the most priceless treasures of the past 1500 years: Napoleon's hat, Don Quixote's lance, even Paul Revere's horse.

The potential significance of this travesty lies far beyond our imaginations. By altering the past, Carmen will disrupt history's delicate chain of events and annihilate the present as we know it, the future as it is to be. Everything we've achieved--our comfort, our families, our country and the countries

-1-



Suspect has  
blue eyes and  
black hair



of the world, our commitment to law and order, all of civilization--is up for grabs. Thus, our very existence is at stake! You must save us, and with us our destiny, by setting history right.

Your mission: to bring back Carmen Sandiego and the stolen time machine alive and intact. You will be issued the latest development in portable time travel devices: the Chronoskimmer 325i. You will use it to travel through 1500 years of time and 48 locations. The 325i features an electronic sensor which enables you to scan the crime scene for clues and translate conversations with witnesses and informants. It also features a Capture Robot to apprehend the suspect with minimal personal danger.

Acme has been granted a Federal Time Travel Commission license allowing us to use the Chronoskimmer with certain time limit and conduct restrictions. The attached information will assist you in successfully completing your mission.

Best of luck from all of us here at Headquarters. The whole world is counting on you.

*The Chief*

The Chief

-2-



Only 37 more hours  
to solve the case!

1000

1050

Battle of Hastings



1100

Chimu Castle at  
Chan Chan

1150



Crossbow found at  
scene of crime

1200



## WORKING AT ACME

### Signing In

You begin the game in the lobby of the Acme Detective Agency.

- Press **A, B, or C** to board the elevator, then **D-Pad** to select the second floor. Press **A, B, or C** to start the elevator.
- When the elevator stops, **D-Pad** left and press **A, B, or C** to enter Personnel.

Special Agent Diane welcomes you.

- Press **A, B, or C** to advance to the next screen.
- To sign in, **D-Pad** to move the red square over a letter and press **A, B, or C** to select.

(If you make a mistake while signing the Release Form, **D-Pad** to "RUB" and press **A, B, or C** to erase your mistake.)

- When you've entered your name, press **START**.
- To enter your sex, **D-Pad** to the gender of your choice, then press **A, B, or C**.





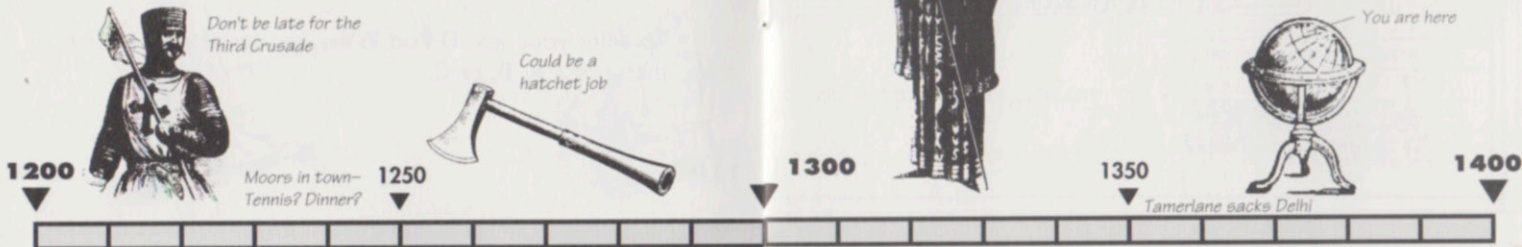
- To enter your password move the red square over a letter and press **A**, **B** or **C**. After you've entered all seven characters, press **START**. If this is your first time playing, just press **START**.
- After you have been issued a Chronoskimmer, press **A**, **B**, or **C** to get your assignment.

### **Saving Your Current Rank**

- Choose **ABORT** from the Chronoskimmer control panel.
- Then choose "GET PASSWORD" and write down the seven-character password in a safe place.

### **Starting a Game at a Saved Rank**

When you start a new game, Diane requires you to enter your name and security access code.



- Simply enter the seven-character password from a previously saved game, then press **START**.

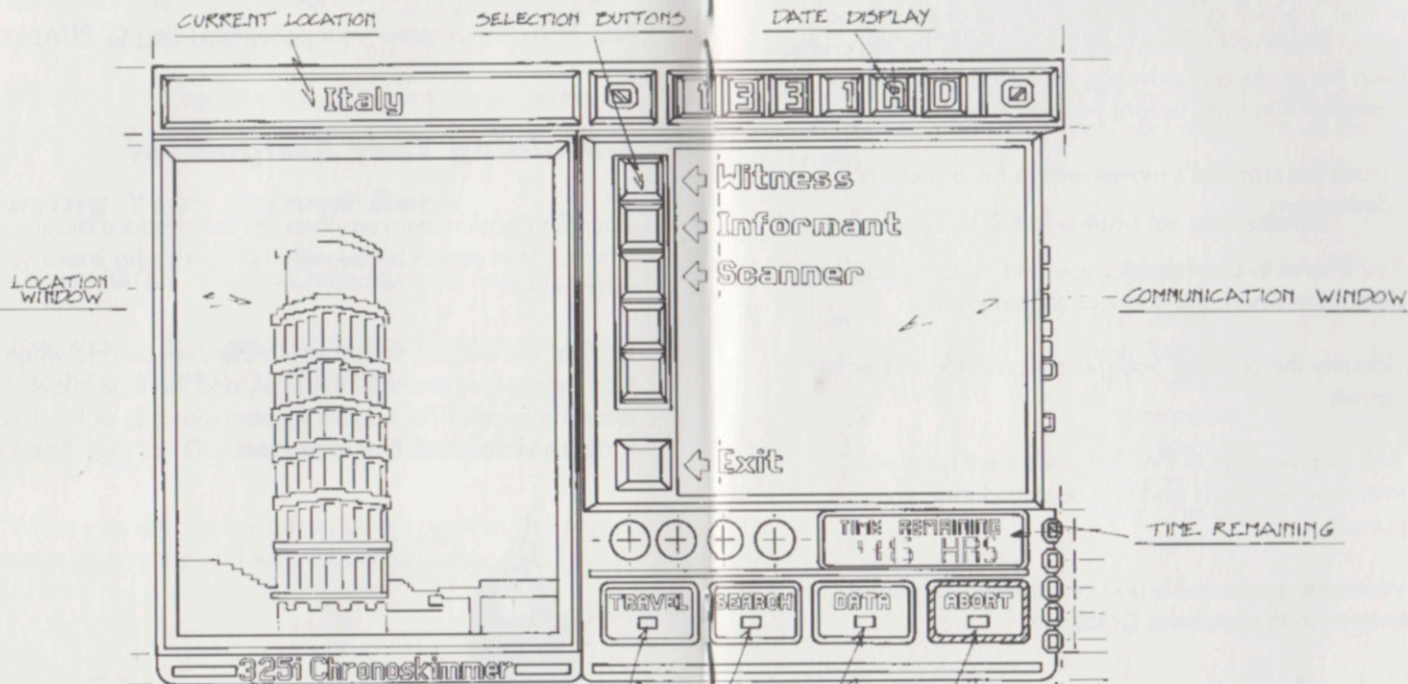
**NOTE:** You must enter your password using **CAPITAL** letters.

### **Obtaining Your Assignment**

Your Chronoskimmer runs through its on-board diagnostics and then connects you with the Chief, who issues your assignment.

He tells you which treasure was stolen, where and when it was stolen, the gender of the thief, and the time allowance the Federal Time Travel Commission has authorized for your use of the Chronoskimmer.

# CHRONOSKIMMER MODEL 325i



NOTE:

- 325i MODEL INCLUDES  
AEGON POWER MODULE AND  
FLASHBACK-1 CIRCUITRY  
ALSO INCLUDES SAFE-PLAID  
FEATURE™ AND 91% CAPTURE  
ROBOT BY KR INC.

TRAVEL/TIME LEAP BUTTON

DATA BUTTON

SEARCH BLUE BUTTON ABORT BUTTON

CHRONOSKIMMER 325i

DESIGNED FOR:  
ACME DETECTIVE AGENCY  
APPROVED BY *Q&T*



## Object of the Game

The thief is heading for a hideout in one of 48 locations in time. There are sixteen possible suspects for the crime. To win the game and advance your career, you must accomplish two tasks before your deadline:

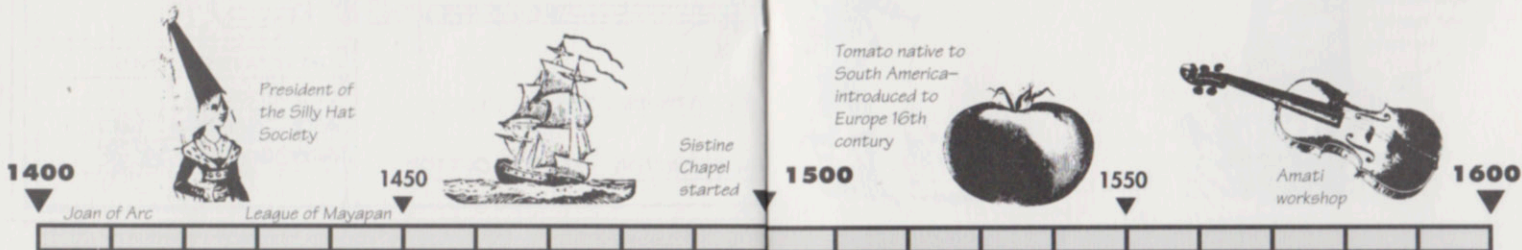
- 1) Track the criminal's movements to his or her final destination.

You'll have to use the clues you find in each location to determine where the criminal is going next.

- 2) Identify the criminal and get a warrant for his or her arrest.

You receive clues to the criminal's identity as you interview witnesses and find objects during your pursuit.

- Warrants are issued based on information you've entered in the Evidence Database.



So as you find clues to the criminal's identity, be sure to log them in the Evidence Database. (For a more detailed explanation of the use of the Chronoskimmer and the Evidence Database see the next section.)

- Promotions are based on the number of cases you solve. You start as a Time Cadet and move up the ranks.

The following is a list of criteria for promotions:

### Cases Solved

Start  
1  
6  
15  
25  
35  
50  
80

### Rank

Time Cadet  
Time Patroller  
Time Investigator  
Time Inspector  
Time Detective  
Ace Time Detective  
Super Time Sleuth  
Retirement

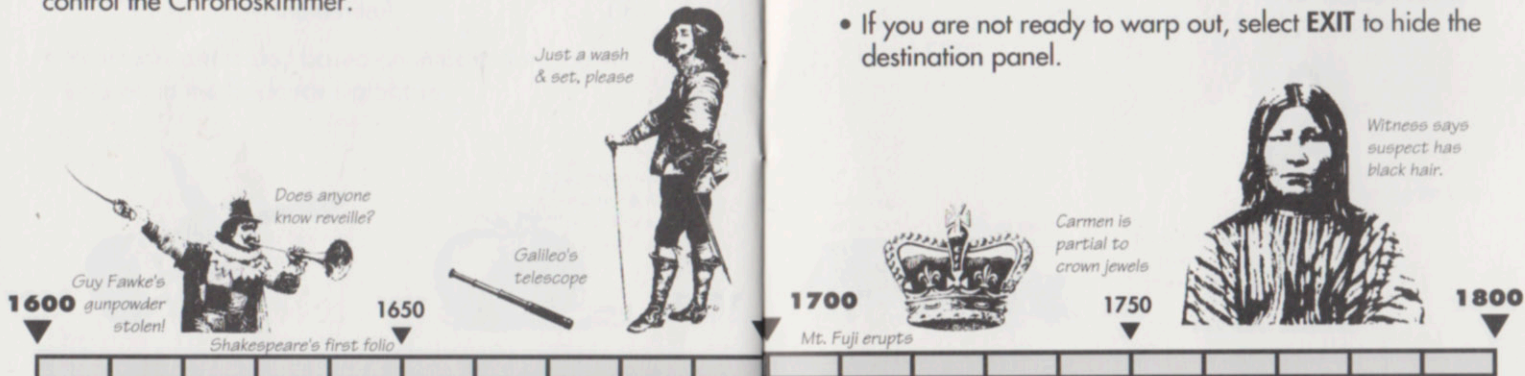


## CHRONOSKIMMER USER'S MANUAL



### Control Panel Buttons

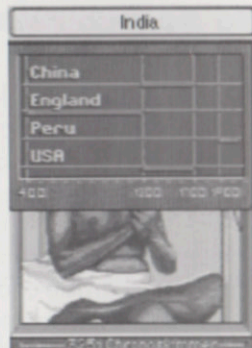
The buttons in the lower right front panel of the screen control the Chronoskimmer.



### To Travel

- 1) **D-Pad** to the **TRAVEL** button, then press **A**, **B**, or **C**. This displays the destination panel and the locations and eras that you can travel to from your present location.

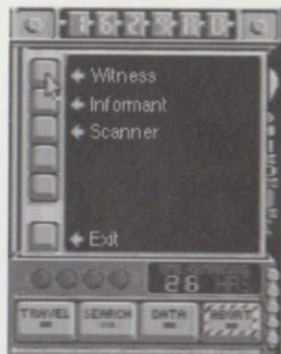
Note that there are three or four destinations, each with its own location and time period.



- 2) Simply **D-Pad** to the destination of your choice, then press **A**, **B**, or **C**.
- Use the **TRAVEL** button to check on the possible destinations to assist you in evaluating a clue.
  - If you are not ready to warp out, select **EXIT** to hide the destination panel.

## To Search For Clues

- The **SEARCH** button lets you interview witnesses or informants and scan the crime scene for clues to the villain's next destination. In addition, witnesses and informants may provide character clues which you may use to identify the criminal.



- 1) **D-Pad** to **SEARCH**, then press **A, B, or C**.
- 2) To interview a witness, **D-Pad** to **WITNESS**, then press **A, B, or C**. *OR*
  - To interview an informant, **D-Pad** to **INFORMANT**, then press **A, B, or C**.

Get fitted  
for Obi



3:00pm haircut  
appointment  
with Barber of  
Seville

1850

Need coach  
schedule



1900

Horseback  
riding with  
Pancho Villa



1950

Strange!  
I see a great past!



2000

NOTE: Only the **WITNESS** and **INFORMANT** buttons contain character clues. *OR*

- To scan for physical clues, **D-Pad** to **SCANNER**, then press **A, B, or C**.
- Each panel button provides a different clue. You may not need all of the clues to determine your next destination, but you may miss a character clue if you skip some.

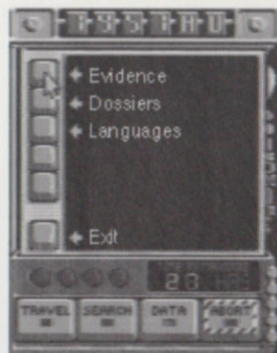
Checking all of the buttons will cost you more time; it's up to you as a detective to decide which is more important.

**You'll need all of the character clues you can get to obtain a warrant, so be sure to log them in the EVIDENCE DATABASE!** (See the next section)

- To leave the **SEARCH** mode **D-Pad** left or right so the cursor rests on a Chronoskimmer front panel button; or select **EXIT**.

## To Obtain or Enter Data

The **DATA** button lets you use the Chronoskimmer to enter evidence and to view the suspects' dossiers.



- 1) **D-Pad** to **DATA**, then press **A, B, or C**.
- 2) To view a dossier, **D-Pad** to **DOSSIERS** and press **A, B, or C**; then **D-Pad** to the suspect of your choice and press **A, B, or C**.

Each dossier contains a gang member's physical traits and a character clue. *OR*

- To log character clues, **D-Pad** to **EVIDENCE**, then press **A, B, or C**. **D-Pad** up or down to select the category for the character trait you wish to log, then press **A, B, or C** to cycle through the list of character traits contained in the Evidence Database. Stop when the trait you have uncovered is shown. *OR*
- To compute evidence and to issue a warrant, **D-Pad** to **COMPUTE**, then press **A, B, or C**.

This checks your notes in the database against all of the gang's dossiers. If the computer finds a single match a warrant is issued and the Capture Robot is activated.



**NOTE:** You'll know you're really close to nabbing the suspect when interviewing and scanning yeild no clues. Instead, you'll be told the suspect is near. Be patient and keep trying to gather clues. The Capture Robot will activate itself.

If more than one gang member's dossier matches the clues you've entered, you are given a list of possible suspects: you'll need to collect more clues to have a warrant issued.

**TIP:** You'll need to log at least three character clues before a warrant will be issued.



**NOTE:** Only one warrant can be active at any time. If you modify or add to the Evidence Database and then choose **COMPUTE**, any existing warrant may be voided even if no new warrant is issued.

- To leave the Evidence Database, **D-Pad** left or right.

### **To Abort**

- Selecting **ABORT** lets you save your current rank or quit the game without saving.
- To save your current rank, **D-Pad** to **GET PASSWORD** and press **A**, **B**, or **C**.

You'll be given a seven-character password: WRITE IT DOWN!!!! You'll need it to begin a new game at your current rank.

**NOTE:** When you enter a password, you begin a new case at your former rank. You cannot resume a case in progress.

- If you don't want to save your current rank, select **QUIT GAME**.
- To begin another case, select **GET NEW CASE**.
- If you've selected **ABORT** by mistake, you can cancel your selection by selecting **EXIT** or by moving the **D-Pad** left or right.



## **FROM THE DESK OF THE CHIEF**

### **Tips From an Old Gumshoe**

- Remember to work quickly. Keep track of the time left on the Chronoskimmer control panel. The Federal Time Travel Commission has never granted an extension on authorized hours for solving a crime, so don't waste time traveling to a destination unless you're certain it's the one to which the suspect has fled.
- You'll know you're on the right track when you see a suspicious person or occurrence on the location panel. The suspect uses other V.I.L.E. gang members to check you out when you're closing in. If you interrogate a witness and he or she knows nothing, you're probably in the wrong location.
- Beware of sneak attacks—they mean you're closing in on your suspect's hideout! Make sure that you've got a warrant before you close in, or else the crook will get away. And remember you can return to the previous location to gather more clues or obtain a warrant.
- Every detective has his or her excuses for blowing a case—I've heard 'em all! But the excuse I hear most often is a bad memory. I tell all of my cadets to keep notes on paper as they gather clues.



- Keep in mind that if you have checked with an informant or witness and have proceeded to another screen, you can go back to that information with no further time penalty.
- Not all of the clues are contained in *The New American Desk Encyclopedia*®. You will find additional location clues in the destination descriptions that appear in the communication window on your Chronoskimmer.
- Keep track of everything; you never know what might be important. And don't get discouraged. Even an Ace Detective can't solve every case. The more you track, the better you'll get! But remember that as you rise through the ranks the cases become more difficult.

## Deciphering Clues

- The key to your success in tracking down Carmen and her gang is to decipher the clues accurately and efficiently. Remember that you may be able to decipher clues with information from both the on-screen descriptions at each location and *The New American Desk Encyclopedia*.
- You'll find it easier to locate the information you need for your investigation if you become familiar with *The New American Desk Encyclopedia*. Take a moment to look at the section "How to Use" at the beginning of the *Encyclopedia*. When you look up an item, you may want to note additional items cross-referenced in the entry (those items in small capital letters).



- Although solutions to all clues can be found by using the on-screen descriptions or *The New American Desk Encyclopedia*, you may also want to use other reference books to help in your investigation.

## Deciphering A Sample Clue

- Here's how I teach my detectives to solve a clue: If your investigations don't lead you to any immediate conclusions, consider checking possible destinations by looking at the destination panel.
- For example, let's say you use the Scanner button, and the clue is: "You find a telescope." This doesn't bring a specific destination immediately to mind. To narrow down the possibilities you check the location panel and find four locations/times: India 1700-1899, Spain 1900-1959, Japan 400-1299, and Italy 1300-1699.
- With these possible destinations in mind, look up "telescope". Reading through the entry, you find cross-references to "astronomy" and "Galileo", but nothing that helps narrow down the search. Looking up "astronomy", you find several location references: Babylonia, China and Egypt, all prior to 2000 B.C., too early for your use. Other references include Greece (not in the destination panel list) and a second cross-reference to "Galileo". Time to look him up!
- The entry for Galileo shows that he was an Italian who lived from 1564 to 1642, and that he was the first to use the telescope for astronomical observations. Both





his location and time match one of the destinations found on the destination panel. Time for a trip to Italy!

- If some clues seem harder to solve than this, you can widen your investigation by either doing a second or third scan of the area, or by questioning your witnesses. For example, doing a second scan in this case would turn up the clue: "'Galileo Galilei' is scratched on the side of the telescope," and a third scan would get you: "The telescope was manufactured in 1609." Remember, however, that you have a deadline and that investigating takes up valuable time.
- So use your best judgment, manage your time wisely, and you'll be well on your way to apprehending the most feared crook in the world—Carmen Sandiego.

## ELECTRONIC ARTS LIMITED WARRANTY

WARRANTY - Electronic Arts warrants to the original purchaser of this Electronic Arts software product that the medium on which this computer program is recorded is free from defects in materials and workmanship for a period of ninety (90) days from the date of purchase. This Electronic Arts software program is sold "as is," without express or implied warranty of any kind, and Electronic Arts is not liable for any losses or damages of any kind resulting from use of this program. Electronic Arts agrees for a period of ninety (90) days to either repair or replace, at its option, free of charge, any Electronic Arts software product, postage paid, with proof of purchase, at the Electronic Arts Warranty Department. This warranty is not applicable to normal wear and tear. This warranty shall not be applicable and shall be void if the defect in the Electronic Arts software product has arisen through abuse, unreasonable use, mistreatment or neglect.



LIMITATIONS - THIS WARRANTY IS IN LIEU OF ALL OTHER WARRANTIES AND NO OTHER REPRESENTATIONS OR CLAIMS OF ANY NATURE SHALL BE BINDING ON OR OBLIGATE ELECTRONIC ARTS. ANY IMPLIED WARRANTIES APPLICABLE TO THIS SOFTWARE PRODUCT, INCLUDING WARRANTIES OF MERCHANTABILITY AND FITNESS FOR A PARTICULAR PURPOSE, ARE LIMITED TO THE NINETY (90) DAY PERIOD DESCRIBED ABOVE. IN NO EVENT WILL ELECTRONIC ARTS BE LIABLE FOR ANY SPECIAL, INCIDENTAL, OR CONSEQUENTIAL DAMAGES RESULTING FROM POSSESSION, USE OR MALFUNCTION OF THIS ELECTRONIC ARTS SOFTWARE PRODUCT.

Some states do not allow limitations as to how long an implied warranty lasts and/or exclusions or limitations of incidental or consequential damages so the above limitations and/or exclusions of liability may not apply to you. This warranty gives you specific rights, and you may also have other rights which vary from state to state.

RETURNS AFTER WARRANTY - To replace defective media after the ninety (90) day warranty period has expired, send the original cartridge to Electronic Arts' address below. Enclose a statement of the defect, your name, your return address, and a check or money order for \$20.00.

Electronic Arts  
Customer Warranty  
P.O. Box 7578  
San Mateo, California 94403-7578

If you need technical assistance with this product, call us at (415) 572-9448 Monday through Friday between 8:30 a.m. and 4:30 p.m. Pacific time.

This game is licensed by Sega for play on the SEGA GENESIS SYSTEM. "SEGA" and "GENESIS" are trademarks of Sega Enterprises, Ltd. WHERE IN TIME IS CARMEN SANDIEGO?®

(c) 1992 Electronic Arts  
(c) 1989, 1992 Broderbund  
Software, Inc.  
All Rights Reserved

Where in Time is Carmen Sandiego?® and Carmen Sandiego® are registered trademarks of Broderbund Software, Inc. Used by Permission.

The New American Desk Encyclopedia® is a registered trademark of New American Library.

Faint, illegible text, likely bleed-through from the reverse side of the page.

Faint, illegible text, likely bleed-through from the reverse side of the page.



**ELECTRONIC ARTS®**

P.O. Box 7578, San Mateo, CA 94403-7578

712905