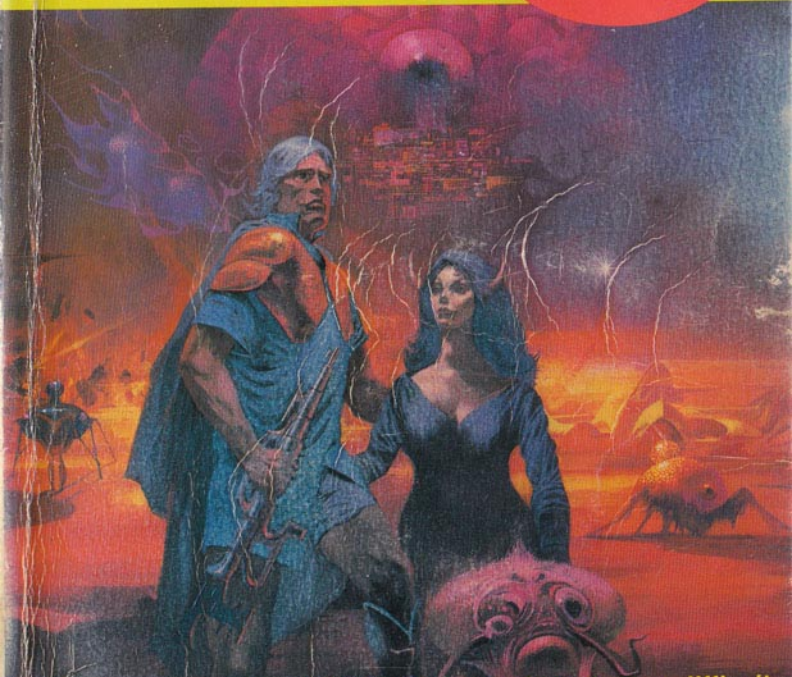


PHANTASY STAR II

SEGA®

HINT
BOOK



Your adventure would be very difficult without this guide. It includes maps of all the towns and mazes in Phantasy Star II. Study it carefully as you pursue your quest. Go forth in strength and honor, brave adventurer.

PHANTASY STAR II

HINT BOOK

Your adventure would be very difficult without this guide. It includes maps of all the towns and mazes in Phantasy Star II. Study it carefully as you pursue your quest. Go forth in strength and honor, brave adventurer.



PHANTASY STAR II

Your Journey

Role-playing games are journeys packed with adventure. This *Phantasy Star II* guidebook provides hints should you find yourself completely stumped and unable to proceed. It's best to read the hint only if absolutely necessary, and then, only the hint you really need. Have fun!

↓ PASEO TOWN	6
↓ ARIMA TOWN	8
↓ SHURE	10
↓ TOWER OF NIDO	13
↓ NORTH BRIDGE	16
↓ OPUTA TOWN	18
↓ BIOSYSTEMS LAB	20
↓ PASEO TOWN	24
↓ ZEMA BRIDGE	25
↓ ZEMA TOWN	26
↓ RORON ISLAND	28
↓ KUERI TOWN	32
↓ PIATA TOWN	34



↓ UZO ISLAND	36
↓ KUERI TOWN	39
↓ CLIMATROL	40
↓ PASEO TOWN	48
↓ CONTROL CENTER	49
↓ RED DAM	54
↓ YELLOW DAM	58
↓ BLUE DAM	62
↓ GREEN DAM	68
↓ GAIRA	72
↓ PASEO TOWN	74
↓ SKURE	75
↓ DEZO MAP	76
↓ ZOSA TOWN	80
↓ AUKBA TOWN	82
↓ RYUON TOWN	84
↓ CREVISE	86
↓ ESPER MANSION	90
↓ MENOBE	92
↓ GUARON	96
↓ IKUTO	100
↓ NAVAL	106
↓ ESPER MANSION	110
↓ NOAH	111



PASEO TOWN

Your journey starts from this town.



Start your journey alone.

Your journey starts from Paseo. First, ask the Commander of Mota in the Central Tower the reason for your first journey. The Commander asks you to go to the Biosystems Lab where the Biomonsters are created, and bring back a Recorder. He does not know where the Biosystems Lab is located. You need to talk to the townspeople and obtain that information. They will also give you some hints for your journey. Back in your home awaits Nei who will accompany you. Then go to the stores and



You wake up after dreaming of a battle.

BUILDINGS IN PASEO

- CENTRAL TOWER
- TELEPORT STATION
- DATA MEMORY
- CLONE LABS
- CONTROL TOWER
- AGENT'S HOME
- HOSPITAL

TOOL SHOP

MONOMATE	20
DIMATE	60
ANTIDOTE	10
TELEPIPE	130
ESCAPIPE	70

ARMORER'S STORE

KNIFE	100
DAGGER	200
SCALPEL	180
STEEL BAR	80
BOW GUN	300
SONIC GUN	640

PROTECTIVE GEAR STORE

HEADGEAR	120
CARBON SUIT	128
CARBON VEST	120
FIBER COAT	300
CRBNSHIELD	540
CRBN EMEL	420

BUILDINGS IN PASEO



buildings. They sell various weaponry and devices which you will need. We suggest you also buy some medical supplies! Venture forth after obtaining your supplies and as much information as possible in this town.



At the Central Tower the Commander of Mota will tell you the purpose of your first journey.



Return to your home. Nei is waiting.

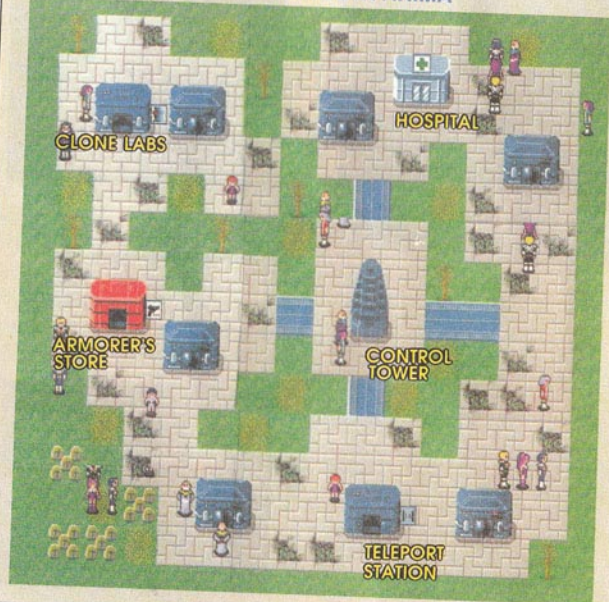
ARIMA TOWN

Arima looks devastated. What happened here?



Arima is the first town you find.

BUILDINGS IN ARIMA



BUILDINGS IN ARIMA

• HOSPITAL	ARMORER'S STORE	• SWORD	1200
• TELEPORT STATION	DAGGER 200	• CERAM KNIFE	2800
• CLONE LABS	STEEL BAR 80	• SONIC GUN	640
		• SHOT GUN	800

Leave Paseo and head north. Arima is to the northeast. It is the first town you come to. The town has been dynamited and destroyed by the scoundrels.

Talk to the townspeople. They tell you that the daughter of Darum has been kidnapped by scoundrels from Shure. Now you know your next task is to find Shure.

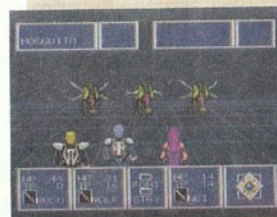
Shure lies to the east of Arima. There are no data memory or tool shops in Arima. You and Nei must be well equipped for the perils ahead. Buy yourself a sword and a steel bar for Nei. Return to your home in Paseo by Teleport Station. There you find your friend, Rudo. Now, the three of you continue the journey. Your battles against the enemy will increase.



Although Arima is devastated, you can get a lot of information.



Return to Paseo and meet Rudo.



When three fight, you suffer less damage.

ENEMIES THAT APPEAR UP TO THIS STAGE



FIRE ANT



MOSQUITO



BEE



POISONER

SHURE

The dungeon at Shure is difficult.

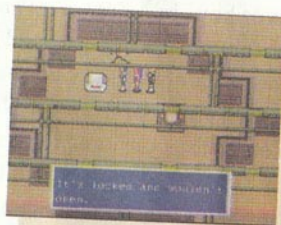


The first dungeon is Shure.

Leave Arima and continue northeast. You see Shure near the beach. Shure is a four-level dungeon.

As you go higher, the power of your enemies becomes stronger.

Follow the map carefully when you enter Shure. It's easy to get lost! Return by the same route to get back to the ground. Use the Escape which you bought at the tool shop in Paseo to return to the outside at once. Since you are still inexperienced, you must carry Monomate and Dimate for healing and an Escape.



Find a small key to open the locked boxes.

ENEMIES THAT APPEAR UP TO THIS STAGE



LOCUST



SPINNER



CARRIER



FROGGY



ARMOR ANT



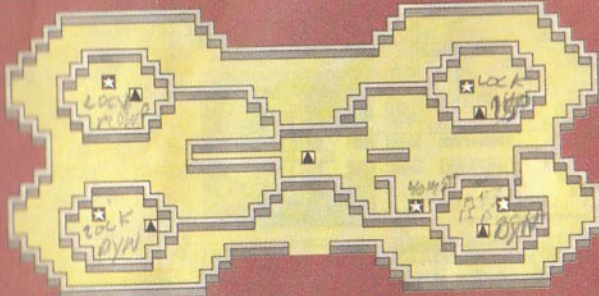
PULSER

1st LEVEL

Items to be found on this level

MONOMATE
150 MST

DYNAMITE (2)
40 MST



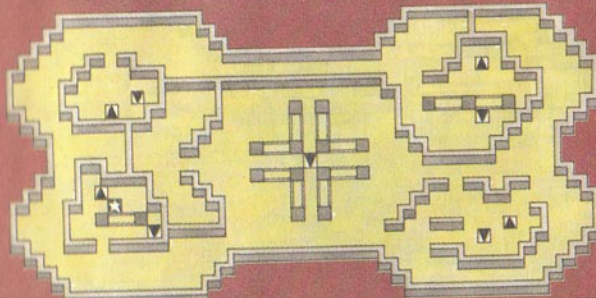
Hints for this level

Turning right on the first level leads to a dead end. So, go left. Take the long way around to the left to get up to the second level.

2nd LEVEL

Items to be found on this level

DIMATE



Hints for this level

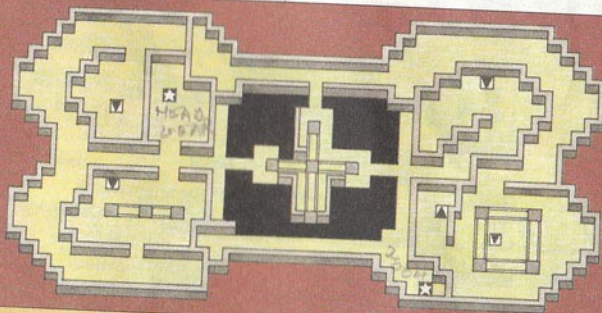
Read the map carefully to find the chute to get up to the third level.

3rd LEVEL

Items to be found on this level

HEADGEAR
20 MST

SHOTGUN



Hints for this level

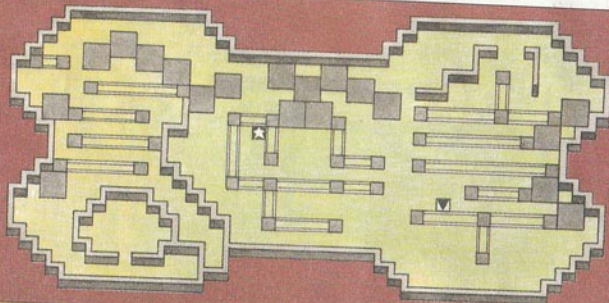
This is the most difficult part in your journey to the fourth level. On the map, compare the second and third levels to go ahead.

4th LEVEL

Items to be found on this level

SIL RIBBON
LETTER

SMALL KEY



Hints for this level

Find a small key on the fourth level to open the locked box containing dynamite. Also, find a letter and some silver ribbon to cover Nei's head. A very dangerous opponent will appear.

TOWER OF NIDO



The Tower of Nido is a three-level dungeon. You will meet very powerful enemies before finding Teim.



Find Teim in the Tower of Nido.

Use dynamite to break through the entrance to the Tower of Nido. Although the Tower is only three levels high, it is more difficult than the dungeon of Shure. Do not overestimate yourself. Hone your skills through the fights against the weaker enemies on the first level.



A strong opponent will give you a lot of trouble.

Of course, you will need your medical supplies and an Escape. Follow the map carefully when proceeding through the dungeon or you may be eliminated by a stronger opponent.

Take special care on the third level since the enemy is very powerful.

ENEMIES THAT APPEAR UP TO THIS STAGE



WASPY



AMOeba



LEECHER



BLASTER



VORTEX



BUZZER



FOADER



SPITKILL

1st LEVEL



Hints for this level

When you enter Nido, the passage divides to the left and right. The left leads to a dead end. Turn right to go up to the third level to save Teim. Take the chute at the central end.

2nd LEVEL



Hints for this level

The passages divide into a maze on the floor. To find Teim, first go to the chute at the left of the first level. Then, proceed to the second and third levels. Follow the map carefully and go to the center of the third level where you will find stronger opposition.

Items to be found on this level

100 MST
DIMATE
20 MST

3rd LEVEL



Hints for this level

Go back and forth between the levels in the dungeon to reach Teim.

Items to be found on this level

TRIMATE
60 MST

Can you overcome the enemy and save Teim?

Very strong opponents are encountered on the 3rd level. You must beat them to save Teim. Teim will tell you that a man named Darum at the North Bridge is her father. She will ask you to take her to the North Bridge to see him.

If you save Teim without encountering the enemy, use the Escape immediately and return to the outside. Probably, you are badly hurt.

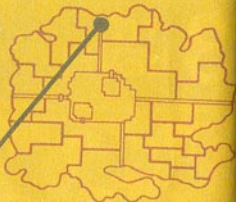
Go straight to the hospital in town for treatment. Then, see Darum at the North Bridge.



At last, you meet Teim.

NORTH BRIDGE

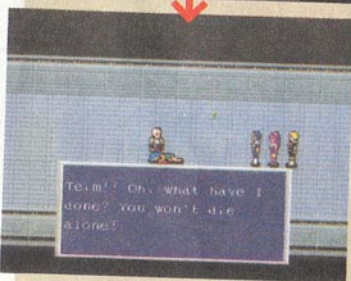
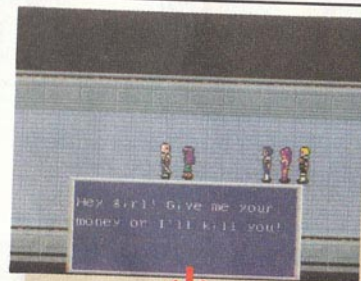
What will happen when Teim meets her father, Darum?



Your journey expands when you cross this bridge.

You saved Teim to cross this bridge. Now your journey will grow after crossing the bridge. However, Darum, Teim's father, is on the bridge.

You are surprised when they meet. Their sad story awaits you.



Reunion of Darum and Teim.

Weapons and other items required for your companions.

Now, there are three of you. You will have more companions later. Check everybody's weapons and items.



ROLF



NEI



RUDO

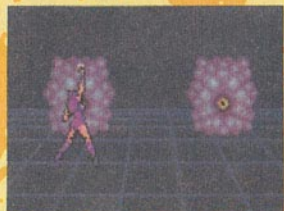
Your situation just now

First, Rolf, the agent, must have a sword to fight with. How about Nei? Have her buy two steel bars at the armorer's shop in Arima. Nei should have a steel bar in each hand so she can attack twice.

A shotgun is recommended for Rudo.

As you replace the protective gear from now on, don't buy and sell often.

Also, use the protective gear acquired in the dungeons carefully. Always carry your medical supplies. Take as much as you can carry. Also, take a Telepipe and an Escapepe.



OPUTA TOWN

Oputa is the first town you come to after crossing the bridge.



What does Ustvestia say about the Musik Technique?

You find many new items at the armor's shop and the protective gear store in Oputa.

You will be better protected by the items you acquire in this town. The most important matter here, however, is to go to Ustvestia's home. Ustvestia will ask you many questions. Answer his questions well, and he will tell you about the Musik technique. You need money to learn this technique. The price is different for males and females.

You will discover the purpose of learning the Musik technique through later adventures.



Nei's skills will improve rapidly.

BUILDINGS IN OPUTA

- TELEPORT STATION
- DATA MEMORY
- CLONE LABS

- CONTROL TOWER
- HOSPITAL
- MUSIC HOUSE

TOOL SHOP

MONOMATE	20
DIMATE	60
ANTIDOTE	10
TELEPIPE	130
ESCAPIPE	70

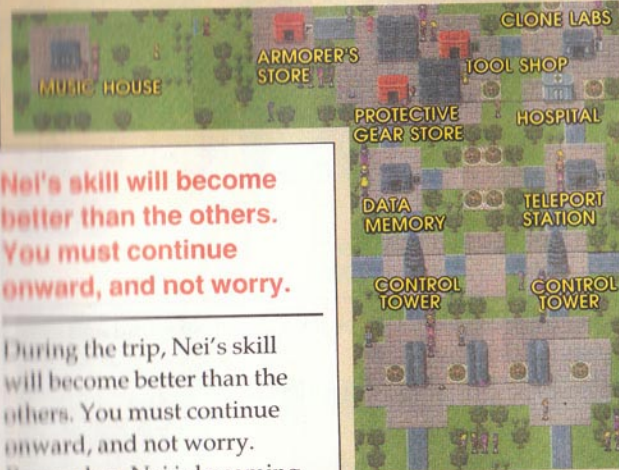
ARMORER'S STORE

SCALPEL	180
CERAM BAR	1200
SWORD	1200
CERAM KNIFE	2800
SHOTGUN	800
SILENT SHOT	920

PROTECTIVE GEAR STORE

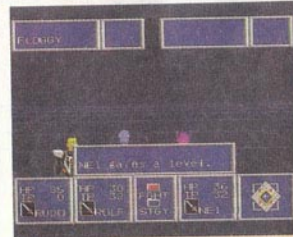
FIBER GEAR	430
SIL. RIBBON	380
FIBER COAT	300
FIBER CAPE	420
FIBER SHIELD	1200
FIBER VEST	280

BUILDINGS IN OPUTA



Nei's skill will become better than the others. You must continue onward, and not worry.

During the trip, Nei's skill will become better than the others. You must continue onward, and not worry. Remember, Nei is becoming stronger.



Your fourth companion appears.

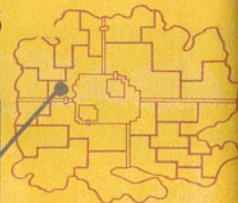
Return to Paseo by Teleport Station after getting the information and buying your supplies in Oputa. Your companions will visit your home in Paseo. The fourth is Amy.



Amy is a female medical doctor and knows techniques that will restore your physical strength.

BIOSYSTEMS LAB

You have arrived at the Biosystems Lab.

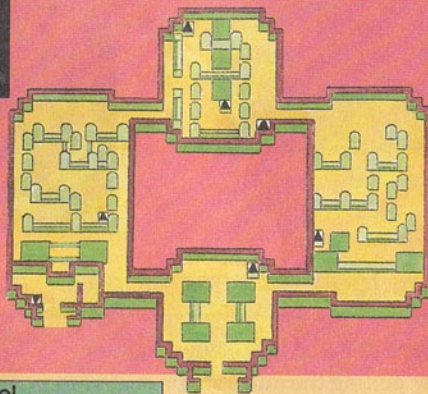


The Biosystems Lab is the third dungeon.

The Biosystems Lab has three levels above ground and two basement levels.

The Recorder is on the 1st basement level.

1st LEVEL



Hints for this level

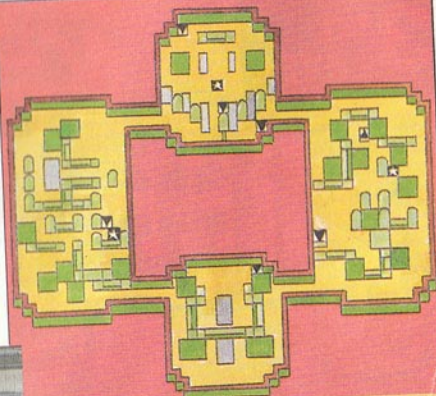
The passage on the first level of the Biosystems Lab divides to the left and right at the entrance. The right passage is a dead-end, so turn left. There is no container holding items on the first level.

Chutes to the second level are found at three locations.

2nd LEVEL

Items to be found on this level

ANTIDOTE
STAR MIST
BOALPEL



Hints for this level

Your way to the first basement is determined by the chute you choose. Follow your map carefully. The second level is more complicated than the first level. Go to the third level through the chute at the right of the second level. Powerful opponents await you on the third level. Take care of your physical condition.



ENEMIES THAT APPEAR UP TO THIS STAGE



LOCUSTA



KITE DRGN



STINGER



MUSH ROOM



JELLY



PINCHANT



HIT TAIL

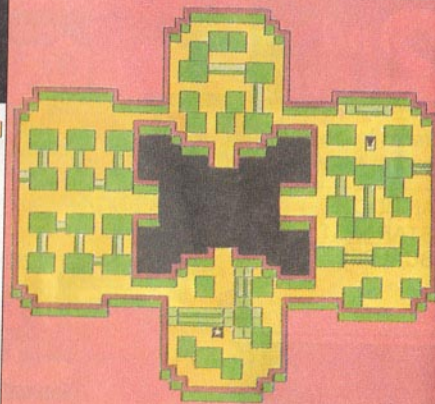


INSECTA

3rd LEVEL

Items to be found
on this level

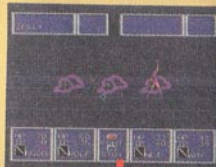
DYNAMITE



Hints for this level

You will suffer from the attack of strong enemies if your companions come to the third level with weak bodies. Blaster, and Jelly will make your friends sleep or attack you vigorously.

Go to the basement through the center of the third level. First, however, obtain Dynamite from the container on the third level. You will need Dynamite to get to the center of the third level.



You will suffer from the attack by Blaster.

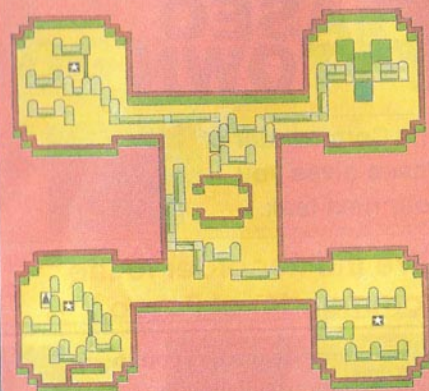


You must destroy the central door on the third level with Dynamite to reach the basement.

4th LEVEL

Items to be found
on this level

POISON SHOT
ANTIDOTE
TRIMATE

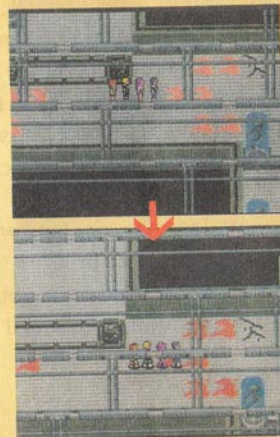


Hints for this level

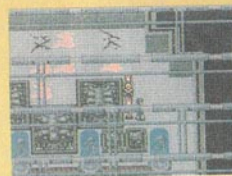
A Damage Zone is located in the first basement level. Go carefully when walking through there.

Powerful enemies await. You should carry Monomate and Dimate to recover your strength.

Leave the Biosystems Lab immediately after getting the Recorder.

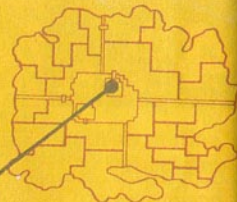


Watch out for the damage zone.



PASEO TOWN

The Commander of Paseo gives you your next task.



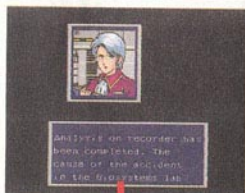
Give the Recorder to the Commander of Paseo.

The Commander orders you to go to the Library when you arrive at the Central Tower.

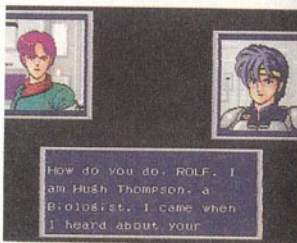
When you arrive at the Library, someone there tells you the cause of the abnormality at the Biosystems Lab. She will give you a Keytube to help you cross the Zema Bridge.

You will face a new stage when crossing the Zema Bridge.

When you return home, your fifth companion, Hugh, will find you. He is a biologist.



You have obtained the Keytube.



Hugh is your fifth companion.

ZEMA BRIDGE

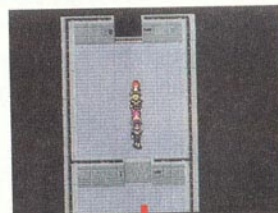
Insert the Keytube at the Zema Bridge to open the door.



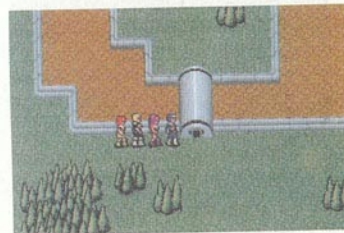
What awaits you after the Zema Bridge?

Use the Keytube you received at the Library and the door will open automatically.

Now, the going gets tougher. What awaits you?



Use the Keytube to open the door.



ZEMA TOWN

Zema is the break-point of your trip.



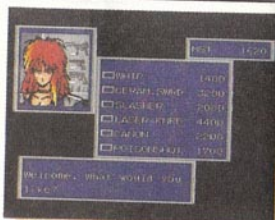
In Zema, you hear about Roron.

You hear of a resort town on a lake, although the suburbs of Zema are on dry and rough terrain.

What is going on?

The items sold at the armorer's shop and protective gear store in Zema are expensive, but they are all necessary for your journey.

We recommend you buy a ceram. swrd, laser knife, and cannon.



Buy the items at the armorer's store and protective gear shop in Zema.

When you arrive in town, ask the people for information. They will tell you about Roron.

Roron seems to be a peninsula to the south of Zema.

From now on, Zema is an important town for your journey. Zema is the break-point between Kueri, Piata, and Roron. You should try to conserve your energy in Zema.



The townspeople will tell you about Roron.

BUILDINGS IN ZEMA

- DATA MEMORY
- CONTROL TOWER
- HOSPITAL

- TELEPORT STATION
- CLONE LABS

TOOL SHOP

MONOMATE	20
DMATE	60
ANTIDOTE	10
TELEPIPE	130
ESCAPIPE	70

ARMORER'S STORE

WHIP	1400
CERAM SWRD	3200
SLASHER	2000
LASER KNIFE	4400
CANNON	2200
POISONSHOT	1700

PROTECTIVE GEAR STORE

TITANIGEAR	1400
TITANIMET	3700
LASER SHOES	240
LASER BOOTS	1000
FIBER EMEL	1360
MIR SHIELD	4800

BUILDINGS IN ZEMA



RORON

Can you get a jet scooter from the Motavian in Roron?



Something sinister awaits you in Roron.

Walk to Roron from Zema.

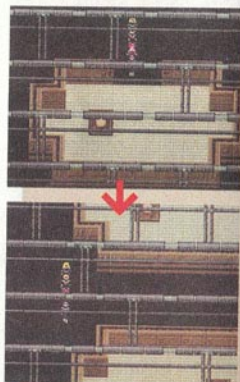
Roron is situated on a peninsula along a beach to the southeast of Zema.

The building on this peninsula is the garbage dump for Roron. The Motavian living at the dump will give you a jet scooter.

There is a dungeon for combustible garbage and a dungeon for non-combustible garbage at the dump. Your opponents become stronger as you go further into the basement.



Roron's garbage dump is at the tip of the peninsula.



When you enter the dump, walk carefully.

1st LEVEL



Hints for this level

Check the two dungeons in Roron.

The dungeon at the bottom is the one you want.

The first level is very narrow.

Items to be found on this level

CANNON

B1st LEVEL



The first basement is narrow but your enemies are strong.

Hints for this level

Take the shortest route in the second basement level to avoid powerful enemies.

Each of the two dungeons' first basement levels has a container. Watch out, these containers may hold unpleasant surprises!

B2nd LEVEL

Items to be found on this level

CERAM BAR

Hints for this level

The second basement level is not so difficult.

However, the container you find may have an item you seek - or it may have garbage, so be careful.

Follow the map carefully when you descend to the second basement level by the chute.



Be careful with the things the Motavian gives you.

ENEMIES THAT APPEAR UP TO THIS STAGE



CATER



SQUAT



WHIRLY



TERA-KITE



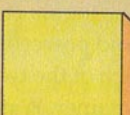
FANG



SLUG MESS



HOT WOOD



B3rd LEVEL

At last, you have a jet scooter!



After hearing of the jet scooter from the Motavian, leave the garbage dump. There may be a jet scooter on the beach.

Hints for this level

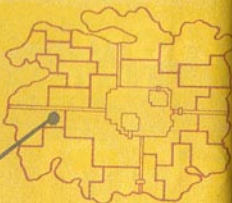
If you talk to the Motavians in the third basement level, they will tell you of a jet scooter. The dungeon where you hear of the jet scooter is for non-combustible garbage.

Also, the third basement level in Roron is not difficult, but watch out for powerful enemies.



KUERI TOWN

After learning about the sea, visit the Professor's home.



Kueri is a town full of brand new information.

It's a long way from Zema to Kueri.

You will meet strong enemies on the way to Kueri, but the information you obtain there is very important.

You will get some very useful information for your adventure at sea by jet scooter. The most important thing to do in this town is to find the Professor's

home. He studies a subject that you must know about for your sea adventure.



What does the professor study?

BUILDINGS IN KUERI

- HOSPITAL
- TELEPORT STATION
- CONTROL TOWER
- CLONE LAB
- DATA MEMORY
- PROFESSOR'S HOME

TOOL SHOP

MONOMATE	20
DIMATE	60
TRIMATE	160
TELEPIPE	130
ESCAPIPE	70
ANTIDOTE	10

ARMORER'S STORE

BOOMERANG	480
LASR SLSHR	6700
LASR BAR	3100
ACIDSHOT	4800
SILENTSHOT	920
LASER SHOT	6200

PROTECTIVE GEAR STORE

TTNM ARMOR	5600
TTNM CAPE	6300
TTNM CHEST	5400
KNIFEBOOTS	4200
MIR EMEL	5120
CER SHIELD	8300

BUILDINGS IN KUERI



What is a Maruera Leaf?

The Maruera Leaf seems to be the material that enables you to dive in the sea. It must be somewhere on Uzo Island where you are going to visit.

PIATA TOWN

We recommend you ride a jet scooter when visiting Piata.



A very powerful weapon is sold in Piata.

Your opponents on Uzo Island are very strong, so get the powerful weapon and protective gear in Piata.

Piata is located southeast of Zema. Use the jet scooter to go to Piata.

Be careful, there are many strong enemies at sea.



It is a long way to Piata, located in the interior.

BUILDINGS IN PIATA

- HOSPITAL
- TELEPORT STATION
- CONTROL TOWER
- CLONE LAB
- DATA MEMORY

TOOL SHOP

MONOMATE	20
DIMATE	60
TRIMATE	160
TELEPIPE	130
ESCAPIPE	70
HIDAPIPE	280

ARMORER'S STORE

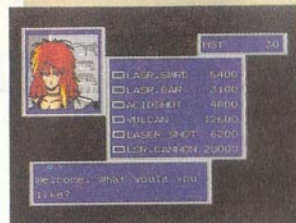
LASR SWRD	5400
LASR BAR	3100
ACIDSHOT	4800
VULCAN	12600
LASER SHOT	6200
LSR CANNON	20000

PROTECTIVE GEAR STORE

SIL CROWN	470
JWL RIBBON	4700
CRMC ARMOR	11700
CRMC CAPE	12400
CRMC CHEST	10000
LONG BOOTS	6800

The weapons and protective gear sold at the armorer's shop and protective gear shop are very powerful and very expensive, but will be a great help to you.

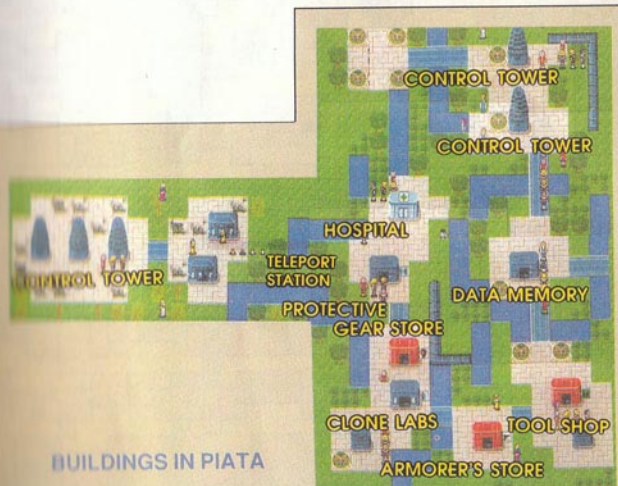
We recommend you get a Lasr.swrd, Lasr.bar, Acidshot, and Lsr.cannon. The Crmc.armor, Crmc.cape and Crmc.chest will give you excellent protection.



The items at the armorer's shop and protective gear shop are very expensive.



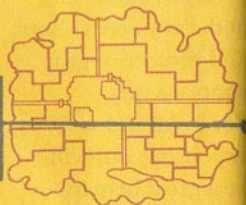
Remember the three Control Towers.



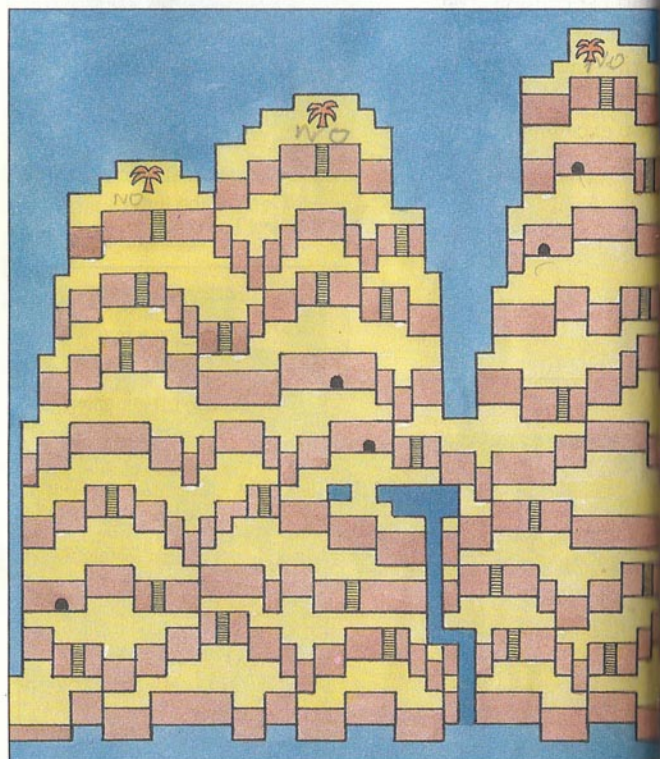
BUILDINGS IN PIATA

UZO ISLAND

Despite the small size of Uzo Island, its dungeon is quite large.



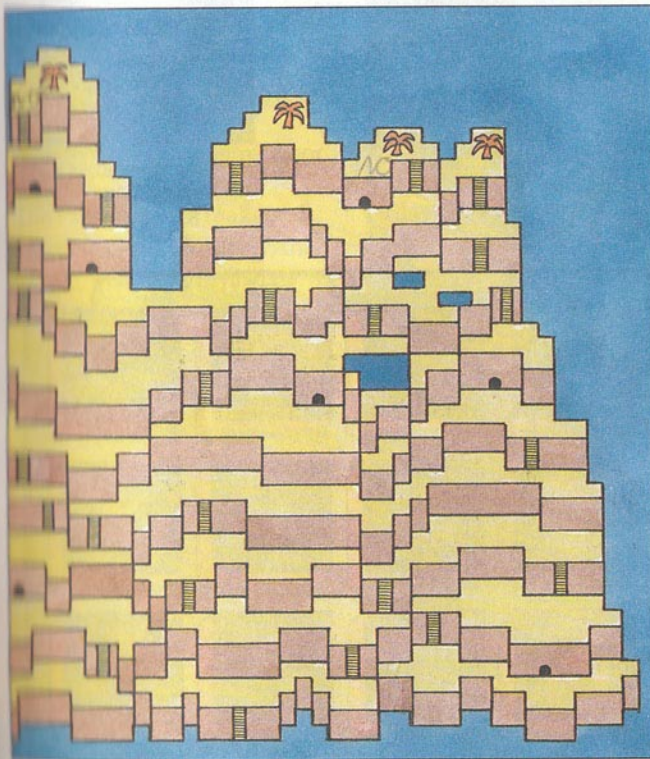
Look for Uzo Island on the jet scooter.



Uzo Island is located at the east end on the map of Mota. Search that area on the jet scooter. Remember that the enemies at sea are very persistent and strong.



Now for your sea adventure!



There is a fake island of Uzo. There are two identical islands at sea, one north and one south. The real island is the northern one.

Disembark on the Island. Enter the mountains from the right side of the island as shown in the photograph at the right. Beware, many strong enemies will appear.

Check the map carefully and find the Maruera Leaf. There are many imitations of the Maruera Leaf.



Enter the mountain through here.

ENEMIES THAT APPEAR UP TO THIS STAGE



PANDITE



REPTILE



SPIT FANG



PUG HIT



PUG BRAT



PUG KILL



WOLF ANG



BURNWOLF



HEAD ROT



CATMAN



GLOWSTK



BLOCKHED

KUERI TOWN

You can dive into the sea with Maruera Gum.



Take the Maruera Leaf to the Professor's home.

If you are badly injured by the time you find the Maruera Leaf, use the Escapipe and Telepipe to return to town quickly. Then, take the Maruera Leaf to the Professor in Kueri.

The Professor will make Maruera Gum. However, the Maruera Gum can only be used at certain places.



Go underwater by using the Gum.

CLIMATROL

The dungeon of Climatrol is the largest dungeon you have yet seen.



You find Climatrol when you go due south of Uzo Island.

Look carefully for where the water changes color. You will find this place by going due south from Uzo Island. Then, use the Maruera Gum to go underwater. Go through the underwater passage to find Climatrol in the interior.



A clue to finding the entrance to Climatrol is Uzo Island.



Watch out for the strong enemies at sea!

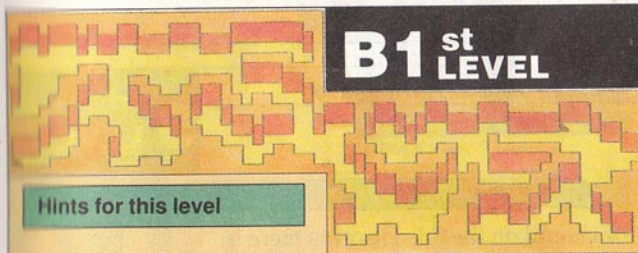
You must take at least these items to Climatrol:

as much Trimate as possible, a Telepipe, and a Hidapipe.



If you use Maruera Gum....

Moor the jet scooter in the place where the water color changes. Use Maruera Gum and dive to the underwater dungeon. You can use Maruera Gum as many times as you need.



Hints for this level

The underwater dungeon is the only route to Climatrol. The orange area is the damage zone. Do not waste your energy before the adventure.



The orange area is the damage zone.

Hints for this level

The first level of Climatrol looks like an ordinary passage. You can go up easily.



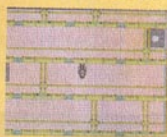
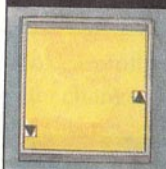
1st LEVEL

2nd LEVEL

Hints for this level

There is nothing at all on this level.

The second level is even easier to pass.



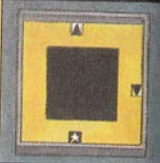
Items to be found on this level

JWL RIBBON

3rd LEVEL

Hints for this level

Be careful on the third level as there is a pitfall at the center. There is also a treasure chest.



4th LEVEL

Items to be found on this level

FIBER VEST

Hints for this level

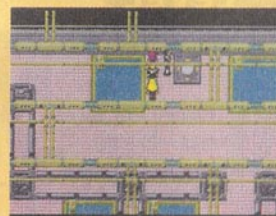
There is a pitfall and a treasure chest on the fourth level. Your opponents are also stronger.



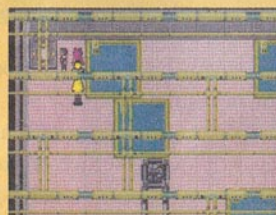
5th LEVEL

Hints for this level

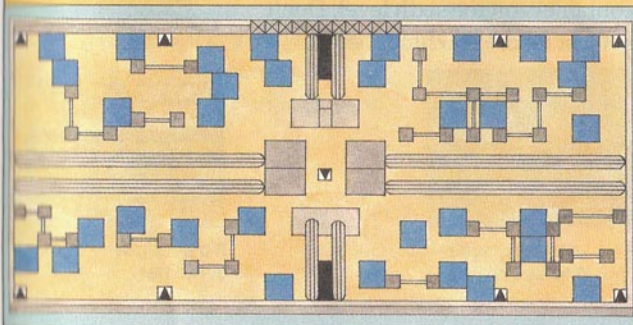
The fifth level is wider. There are eight chutes going up. Your success in reaching the eighth level depends upon which chute you choose. The unique structure of the Climatrol dungeon becomes apparent on this level. Check the map to see which way to go.



Which chute do you use to go up?



Check your route.

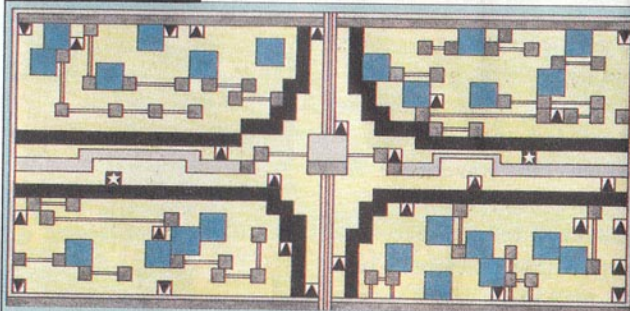


6th LEVEL

Items to be found on this level

SIL RIBBON

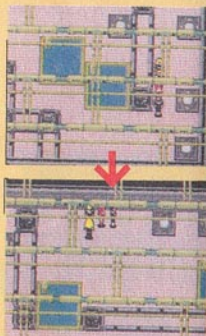
KNIFE BOOTS



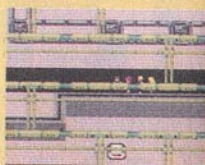
Hints for this level

The seventh level is the most difficult one in Climatrol.

The key to finding your way on the seventh level is which chute you choose on the sixth level, because there are a lot of chutes in Climatrol. You must reach the center of the sixth level after using the chute several times between the sixth and seventh levels. There are two containers on the sixth level. Don't get lost before reaching them.



Which chute will you choose?



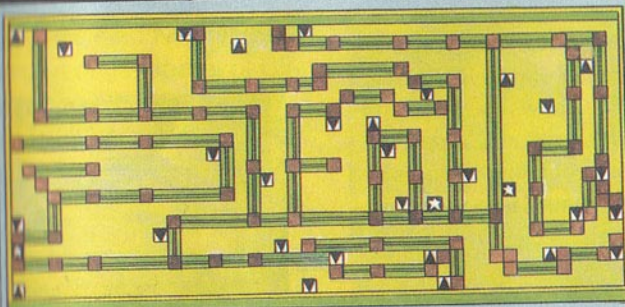
It's a long way to the container.

7th LEVEL

Items to be found on this level

LASR BAR

CERAM BAR



Hints for this level

The seventh level is divided by pipes.

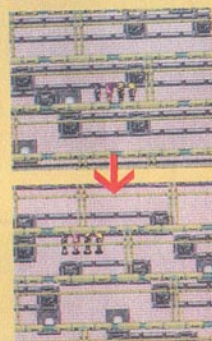
Although you can see it, it is a very long way to your destination.

There are three containers in the seventh level.

However, each route is very hard to follow.

Powerful enemies such as Flarewolf, Catfang, and Forest await on the seventh level.

You had better use the medicine and techniques to recover from your injuries at the hands of your enemies.



The maze is very complicated.

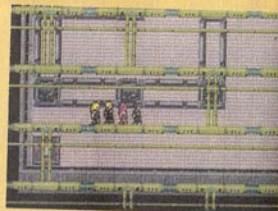


Your enemies are very strong.

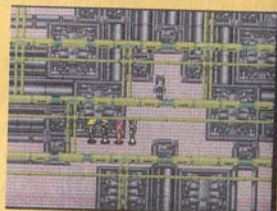
8th LEVEL

Hints for this level

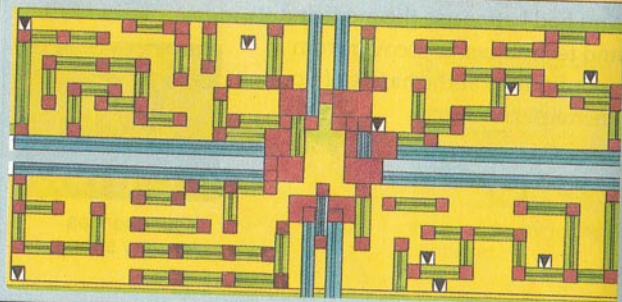
A girl waits for you at the center of the eighth level. She knows the maze and the secret of Climatrol. One of your purposes at Climatrol is to meet this girl. Who is she?



When you reach the center of the eighth floor....

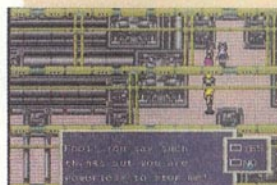


Talk with the girl.



You will see a tragic fight between Nei and Neifirst.

Nei knows this girl well. She is called Neifirst. She is part of the secret of Climatrol and you will learn a sad destiny here. What is it?



Neifirst is the strongest enemy you have yet met.

ENEMIES THAT APPEAR UP TO THIS STAGE



FLAREWLF



PYTHON



BLASTOID



CATFANG



FIRIA



SCALY



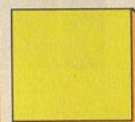
FOREST



CATETE



RAIT DRG



PASEO TOWN

You will be chased by the Government from now on.



Return to Paseo. A new adventure awaits you.

When you return to Paseo after defeating Neifirst, you learn that you are wanted by the Government as the criminal who put Mother Brain out of order.

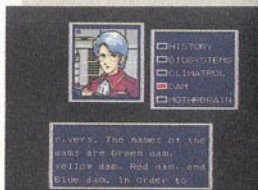
Your next task is to find the cards which open the four dams. They seem to be hidden in a Control Tower. The Control Towers in Piata are suspicious. The townspeople will not easily give you information, but you must obtain it. Also, ask for information at the Library.



Nei cannot be recovered even at the Clone Labs.



When you defeat Neifirst, your enemies turn into robots.



Your next goal is to find the four cards to open the dams.

CONTROL TOWER

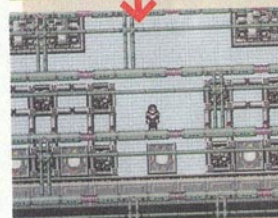
Go into the Control Tower and find the four cards.



One of the three Control Towers in Piata is linked to the underground dungeon.

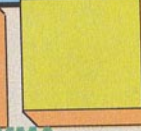
There are Control Towers in the seven towns of Mota. A passage linked to the underground dungeon is located in one of the Control Towers.

Check out the three Control Towers in Piata and you will find the passage to the underground dungeon. Remember, your enemies are all robots now.



When examining the three Control Towers, you find one which you can enter.

ENEMIES THAT APPEAR UP TO THIS STAGE



WHISTLE METAL MAN MAZGAMMA

1st LEVEL

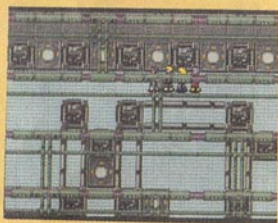
Hints for this level

There are plenty of chutes at the first level of the Control Tower.

Look carefully at the place on the second level where the chute arrives from the first level.

You must go to the center of the second level in this dungeon. Be careful of which chute you use to get to the center of the second level.

The key in this dungeon is to use a number of chutes carefully between the first and second levels. Once you reach the seventh lower chute from the left, your destination is closer.



You will be surprised at the number of chutes.

2nd LEVEL

Hints for this level

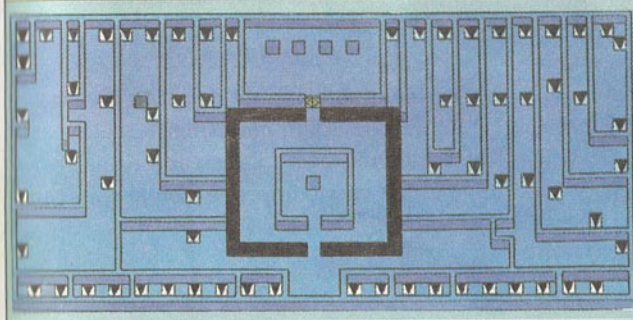
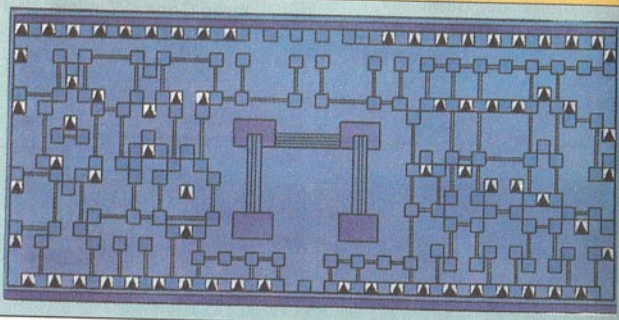
There is a keyboard at the center on the second level. Learn how to use

the Musik technique taught to you by Ustvestia when standing in front of the keyboard.

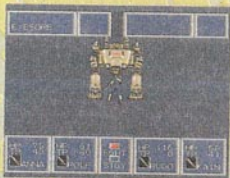
You must use the technique to stay in the Control Tower. When you use the technique, the central door opens. Go to the room where the four cards are stored. Examine the room and locate the four cards.



You will find green, blue, yellow, and red cards.

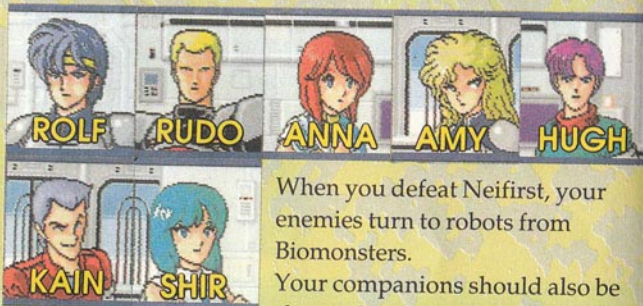


CAUTIONS WHEN YOU GO TO THE DAM!!



The four dams up ahead are more difficult dungeons and the enemies are also very strong, so pay attention to our hints and advice.

Who are the best companions to explore the four dams with?



When you defeat Neifirst, your enemies turn to robots from Biomonsters. Your companions should also be changed so that you can combat

the robots.

You now have seven companions after defeating Neifirst. We recommend Rolf, Rudo, Kain, and Anna. Your task will be hard if the levels of Kain and Anna are low, so we would advise you to improve their levels at an early stage.

Your companions' outfits and medical supplies.



A LASR.SLSHR allows a double-fisted attack.



Only use technique at the right occasion.

The hardest places on your trip on Mota are the Green, Red, Blue, and Yellow Dams. Your opponents at the dams are stronger than the Biomonsters. Go to the hospital and recover your strength before leaving for the dams. Take as much Trimate as possible. Hugh and Anna can make a double-fisted attack if they have a weapon in each hand. It would be a good idea to give a LASR. SWRD to Rolf, a LSR. CANNON to Rudo, a LASER KNIFE or LASER SHOT to Hugh, and a LASR. SLSHR to Anna. Give them highly protective outfits. Attack mainly with the weapons and only use Technique when it is sure to be effective.

When Shir's level reaches 10, take her to the baggage room in the Central Tower of Paseo.

Shir is a thief. Include her in your companions and go shopping in town. Shir suddenly disappears and you find her at your home. She always returns with something, but the things she steals are different depending upon her level. Take her to the baggage room of the Central Tower in Paseo when her level reaches 10. She steals a Visiphone which you can use to save your game anywhere. The Visiphone cannot be bought, it can only be stolen by Shir in Paseo. It is a very convenient item for your adventure at the dams.



Shir disappears suddenly, and returns with something.

RED DAM

The first dam you tackle is the Red Dam.

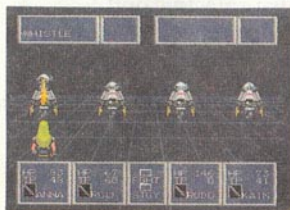


It is the easiest dam of the four.

The nearest town to the Red Dam is Zema. Enter the Red Dam through the inlet of Roron. The Red Dam is three levels high. The main computer, which is your destination,

is located in the center of the second level.

Be careful of Whistle which you meet often before reaching the Red Dam.



You meet Whistle often.

ENEMIES THAT APPEAR UP TO THIS STAGE



NOLEZI



EYESORE



SONOMECH



WIREFACE



WIREHEAD

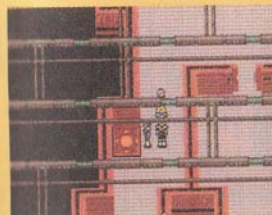
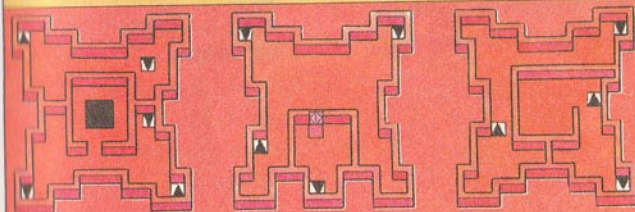
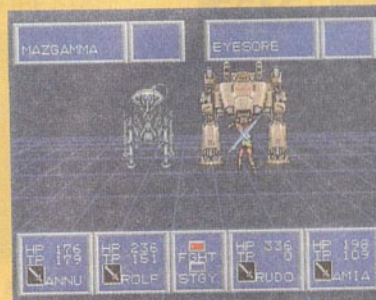


MECHOMAN

1st LEVEL

Hints for this level

The first level is divided into three blocks. Each block is small, but you must make many trips between the first and third levels to reach your destination.



Unfortunately, there is no container on the first level.

2nd LEVEL

Items to be found on this level

SWORD OF ANG

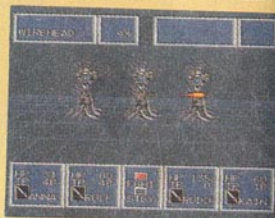
Hints for this level

The first level is located at the breakpoint between the first basement level and ground level.

Watch the three blocks carefully to make trips between the first basement level and the two ground levels.

The first basement level divides to the left and right. The right and left sides are identical. Don't get lost!

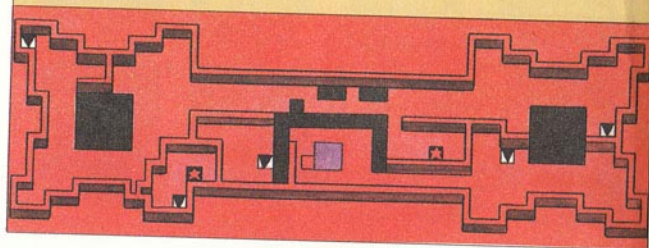
There are seven chutes on the first basement level. Use the chutes carefully and get the Swd of Ang.



The Sword of Ang is a weapon for Rolf.



When you get the weapon, equip it immediately.



3rd LEVEL

Items to be found on this level

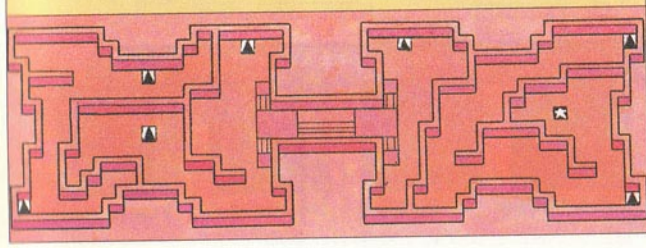
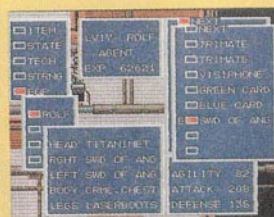
FIRE SLASHR
FIRE STAFF

Hints for this level

The Swd of Ang is in a container on the first basement level. However, the dungeon is divided into three blocks. So, follow carefully to arrive at the container with the Swd of Ang.

The second level is divided by pitfalls as well as walls. The key here is how you reach the computer at the center of the Red Dam. Check the locations of the chutes.

Two items are hidden in a container on the second floor; a Fire Slshr for Anna and a Fire Staff for Amy. They can also be used for purposes other than weapons.



YELLOW DAM

The Yellow Dam has four levels.



The Yellow Dam is closer to Kueri.

It is closer for you to reach the Yellow Dam from Kueri.

The Yellow Dam has four levels. The main computer, which is your destination, is located at the center of the third level.

Check the map carefully before proceeding because the Yellow Dam is more complicated than the Red Dam.



Be careful when using a chute.

ENEMIES THAT APPEAR UP TO THIS STAGE



FIRGAMMA



INFORMER



COOLEY-61



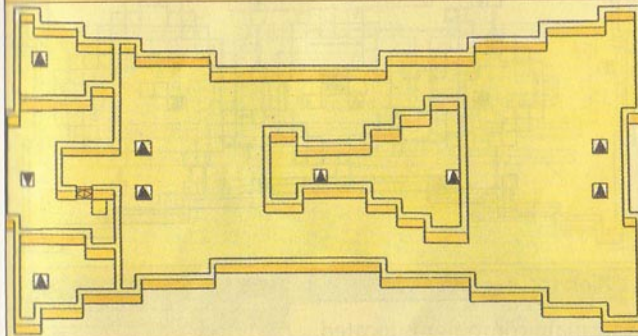
TWIG MAN

1st LEVEL

Hints for this level

The key on the first level is how you can reach the center.

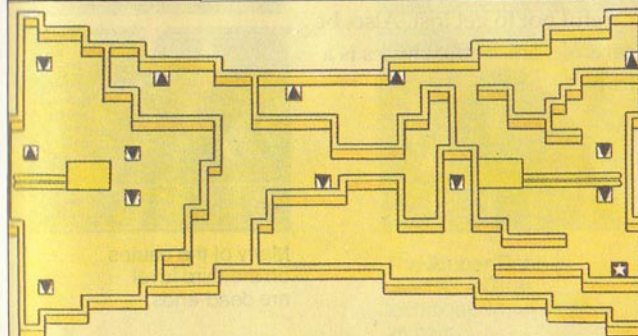
Use the two vertical chutes in the right side.



2nd LEVEL

Items to be found on this level

ESCAPIPE



Hints for this level

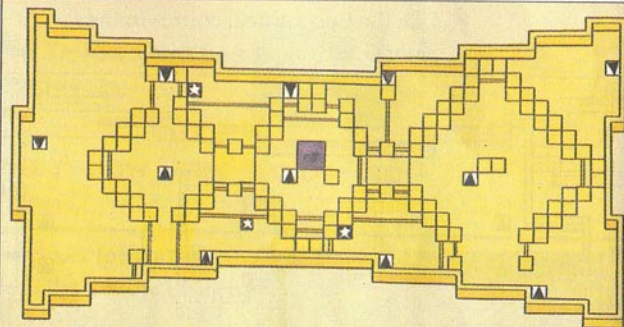
Take an Escape from the container on the second level. Check the map carefully to proceed through the dam.

3rd LEVEL

Items to be found on this level

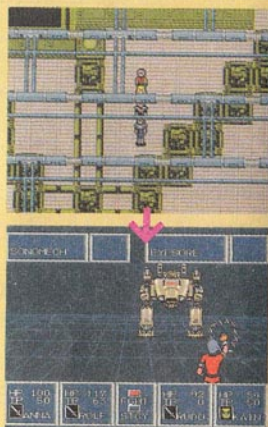
CRYST CAPE
CRYST CHEST

CRYSTANISH



Hints for this level

The main computer is located in the center of the third level. However, only one chute leads there. There are three containers with items. Be careful not to get lost. Also, be careful - one of the chutes is a trap!

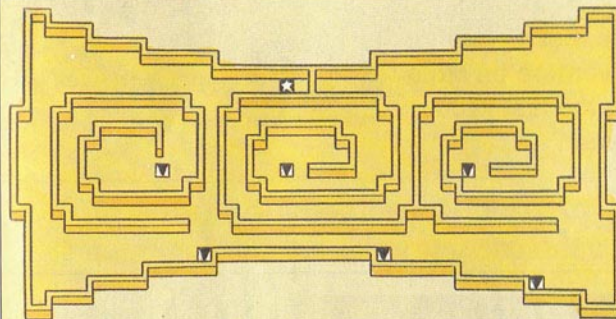


Many of the chutes on the third level are dead-ends.

4th LEVEL

Items to be found on this level

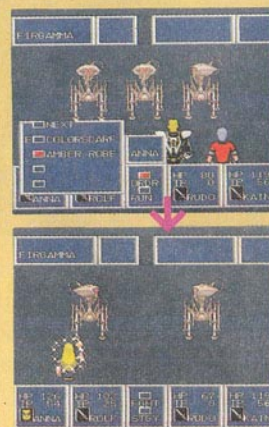
AMBER ROBE



Hints for this level

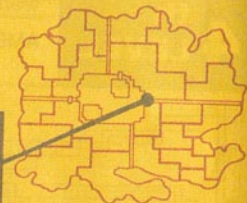
The fourth level is easy and you can walk around. The enemies, however, are strong.

You must get an Amber Robe from the container on the fourth level.

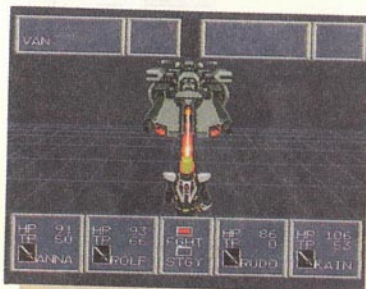


The Amber Robe is used as a Gires technique when used as an item.

The rest of your adventure on Mota are the last two dams.



Of the four dams, the Blue Dam has the most levels.



Powerful enemies

The Blue Dam is a five-level dam and you will often get lost in here.

Also, your enemies are stronger and it will be more difficult to escape from them.

Try to save your energy until you approach the main computer.

ENEMIES THAT APPEAR UP TO THIS STAGE



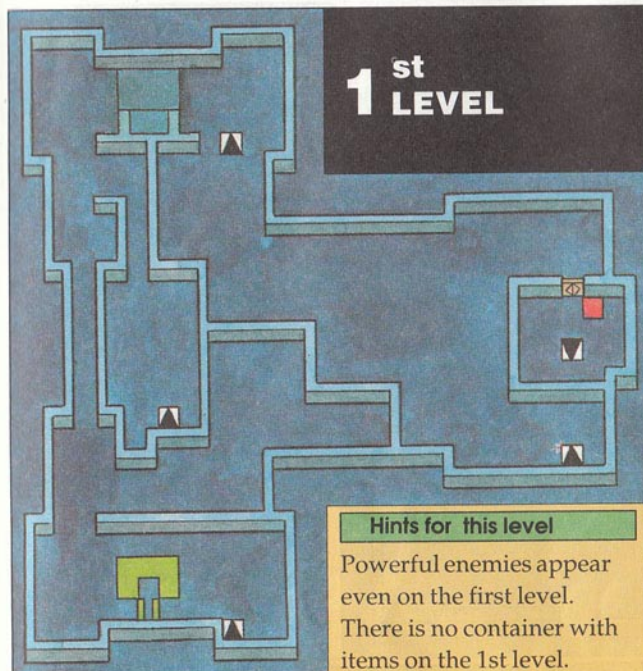
VAN



ATTACU



BOD HEAD



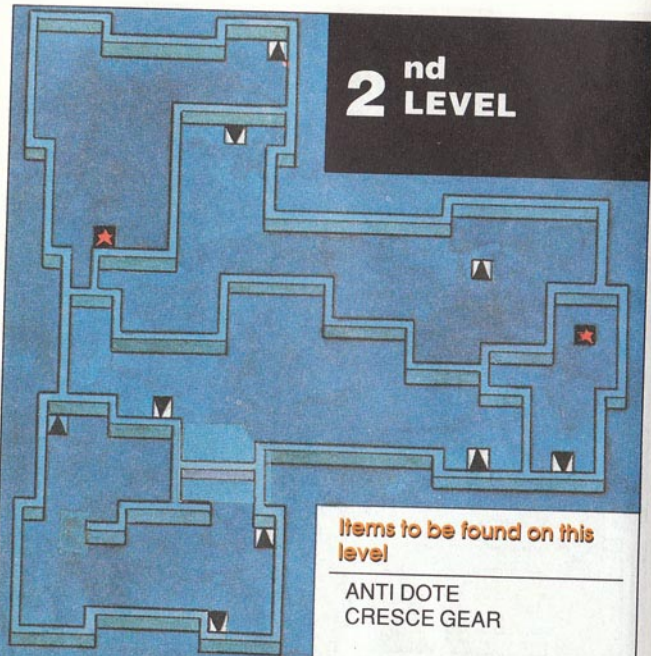
Hints for this level

Powerful enemies appear even on the first level. There is no container with items on the 1st level.

If you are not confident with your physical strength, return to town using a technique or an item.



2nd LEVEL



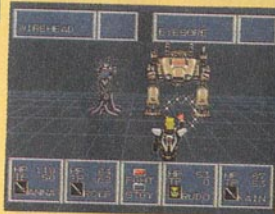
Items to be found on this level

ANTI DOTE
CRESCGEAR

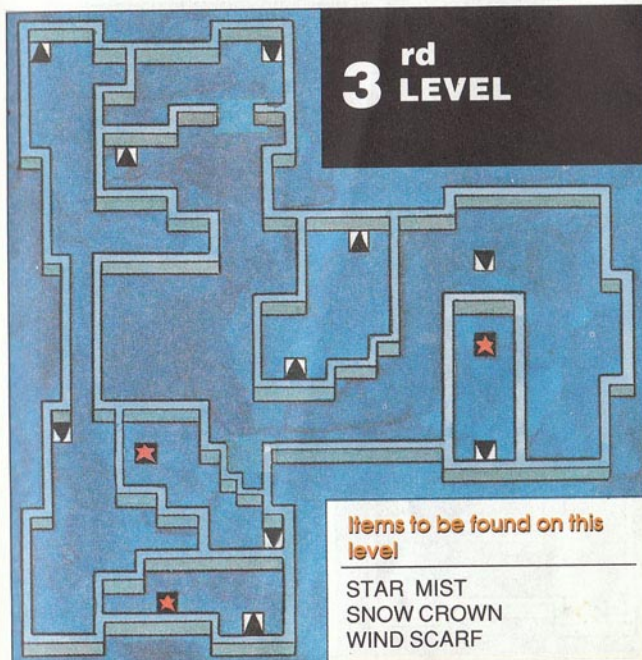
Hints for this level

Get the Antidote and Crescegear from the container in the second level in the Blue Dam. Crescegear has another function when used as an item.

Go through the dam slowly to improve your level through battles with the enemies.



3rd LEVEL

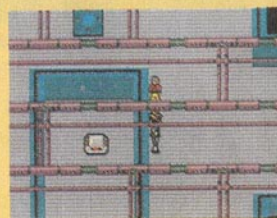


Items to be found on this level

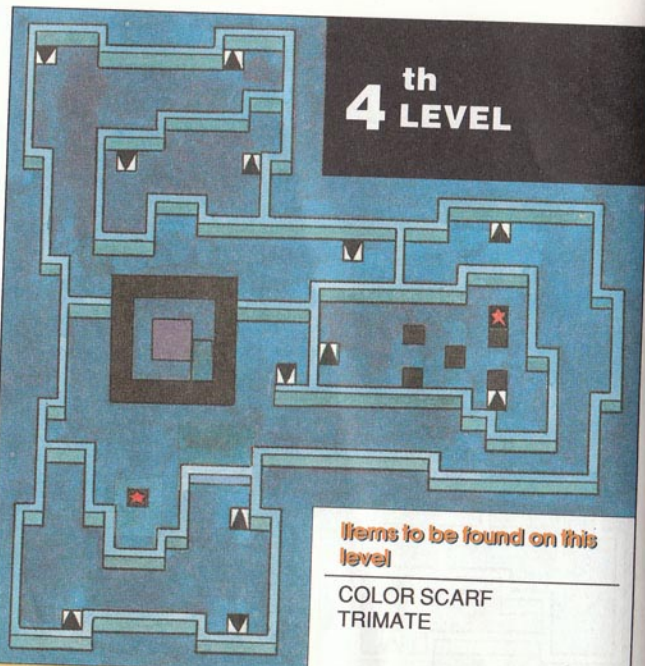
STAR MIST
SNOW CROWN
WIND SCARF

Hints for this level

Three items are hidden in containers on the third level. Think carefully in order to reach the three containers. You should know that the third level is the half-way point in the shortest route for you to attack the Blue Dam.



4th LEVEL



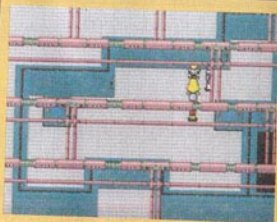
Items to be found on this level

COLOR SCARF
TRIMATE

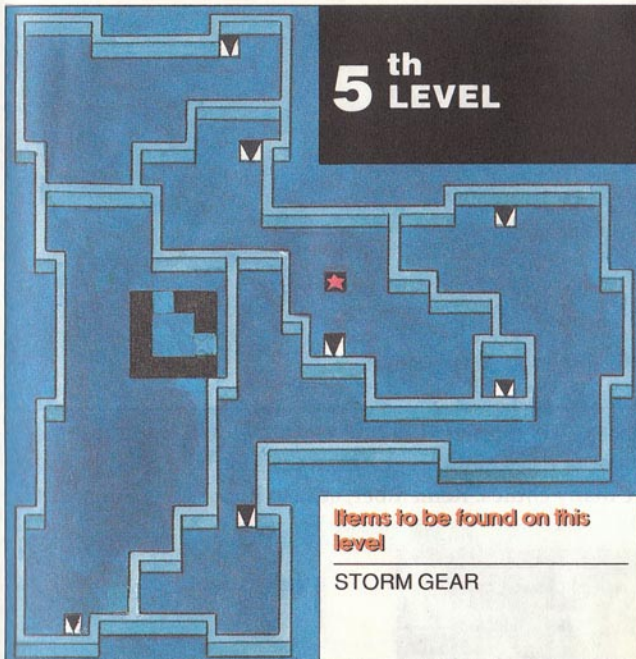
Hints for this level

The main computer is located on the fourth level of the Blue Dam. However, you can't get there by ordinary methods. The key here is to use the pitfall. Your destiny depends upon which of the five pitfalls you use. So, read the map carefully.

A Colorscarf and Trimate, which you can use as items, are hidden in containers on the fourth level.



5th LEVEL



Items to be found on this level

STORM GEAR

Hints for this level

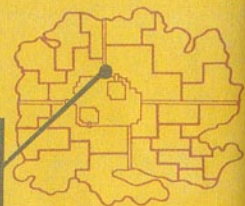
Now, you are at the top level of the Blue Dam. Storm Gear is hidden in a container on this level. Storm Gear functions as Gizan when used as an item. The key on this level is to compare it with the fourth level and jump into the L-shaped pitfall at the maze center.

You are getting close to the main computer.



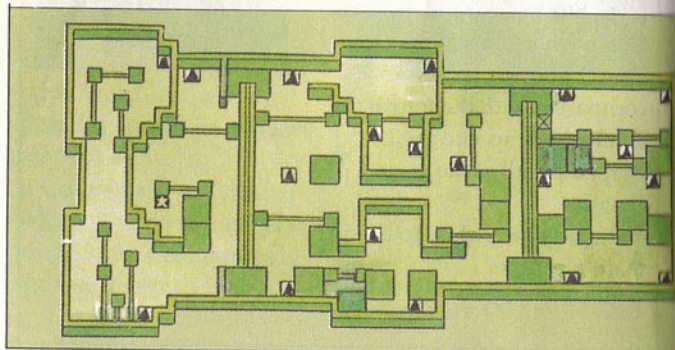
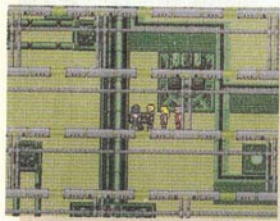
GREEN DAM

It is most convenient to go to the Green Dam from Paseo.



The Green Dam is your last destination. Something will certainly happen to you here.

The main computer of the Green Dam is located in the center of the second level. This dam is very large and there are many chutes. Remember, always know where you are!



ENEMIES THAT APPEAR UP TO THIS STAGE



TWIGTALL



KILGAMMUR



HIVSOLID



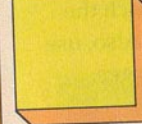
MONSTAR



POLEZIAK



ARMY EYE



1st LEVEL

Items to be found on this level

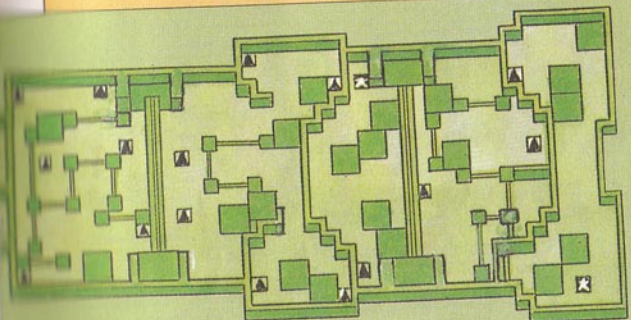
AEGIS
STAR MIST

TELEPIPE

Hints for this level

You could get lost on the first level, depending upon which chute you use first.

Identify the chute connection from the first to the second level by the number. Then, try each one.



2nd LEVEL

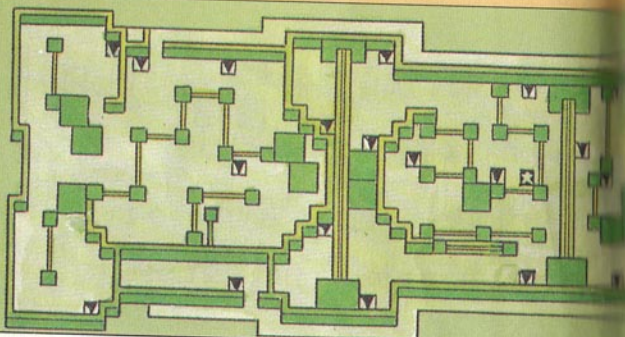
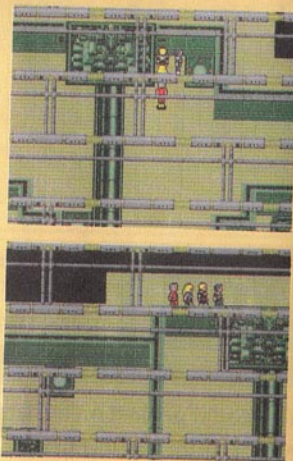
Items to be found on this level

TRUTH SLVS

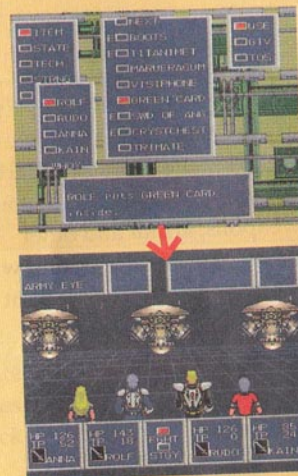
GR SLEEVES

Hint for this level

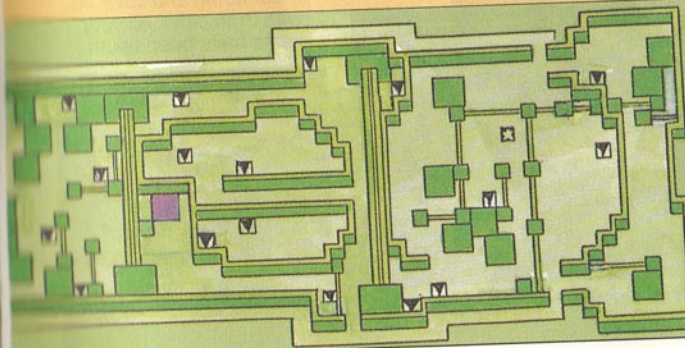
You must use the chutes repetitively to reach the main computer. Also, use the exterior passages.



Three Army Eyes appear when you insert the card to the main computer at the center of the second level. Despite your putting up a tremendous fight, unfortunately, you will be captured with Army Eye Plasma ring and sent to Gaila. This is an important part of the story.



Sorry, you can't defeat
Army Eye!



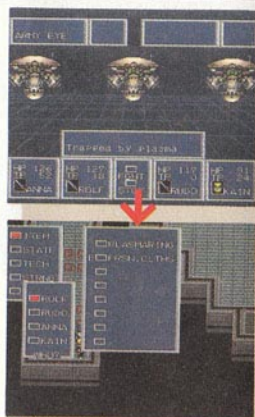
G AIRA

What will happen to them in Gaira?



Can you escape from Gaira while being unable to fight?

You fought against Army Eye at the Green Dam and were locked in the Gaira satellite by them. Army Eye took all your weapons, armor and other items. You are also bound with Plasmaring and cannot fight your enemies and can only escape from them.



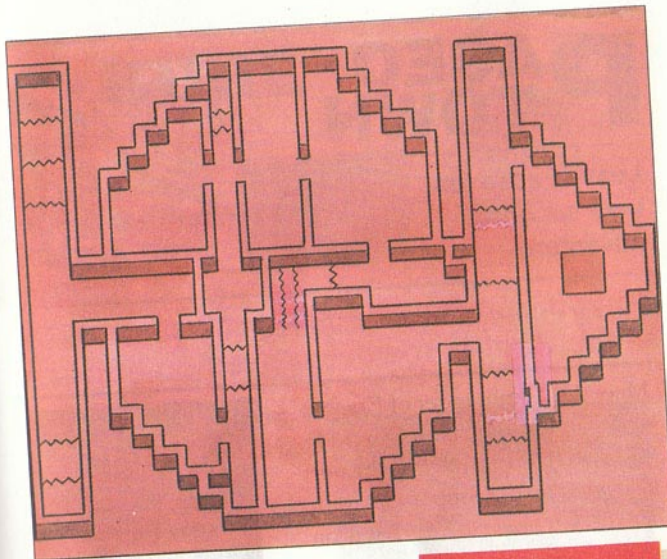
You are bound with Plasmaring and covered with Prsn.clths. All your items have been taken.



You cannot fight.



Be careful in the damage Zone.



When you look for the exit of Gaira, the alarm sounds. The Gaira orbit aims toward Palm. You are saved by the space pirate, Tyler, when Gaira almost crashes into Palm and you are taken back to Paseo on Mota.



Gaira aims toward Palm.



Palm explodes!



Tyler gives you information.

PASEO TOWN

Leave Paseo for your second adventure.



To your surprise, there is a space port in the Central Tower in Paseo.

Meet the Commander of Paseo who will tell you about Dezo. He will also tell you that a space port is located on the roof of the Central Tower. No one knows what is on Dezo.

Recover your strength before leaving for the space port. Take plenty of medical supplies.



The space port is in the Central Tower.



Leave for the second planet, Dezo.

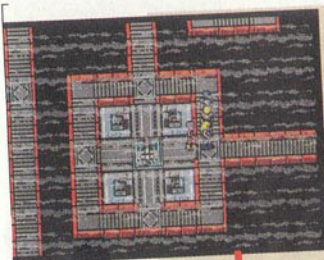
SKURE

Is there a key in solving the secret of Mother Brain on Dezo?



Your adventure starts at Skure, a space port on Dezo.

Skure, Dezo's space port, is a 3-level dungeon with one ground level and two underground levels. The exit of the dungeon is linked to the ground. You must find the exit of Skure Space Port to go to town. However, there are monsters including a robots in the Skure Space Port. Also, a secret lies in the Skure Space Port.



Enemies await you when you exit Skure Space Port.



First, if you are injured, you must return to Paseo.

DEZO MAP

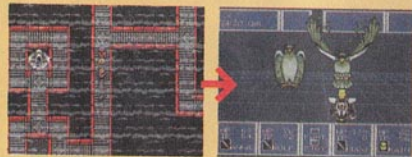
The Skure Space Port is located in the central lake. Passages stretch from it to all destinations on Dezo. There are only three towns, but there are dungeons: Menobe, Guaron, Naval, Ikuto, and Crevice. There is also an Esper Mansion in Alplatin. You will have many adventures in these towns and in the dungeons on Dezo. Check your map carefully before starting your journey.



1st LEVEL

Hints for this level

Remember that the dungeon starts from the first level of the Skure space port and stretches to the ground.



Robots and new enemies live on Dezo.

ENEMIES THAT APPEAR UP TO THIS STAGE



TRACER



POLEZISS



ORANGAH



TRCRBASE



RABBIT



DEZO OWL



SKYTIARA



LrgMINER



ORANGOO



GUN BUST

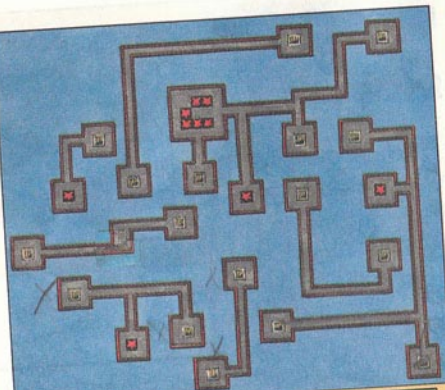


RADITGUT

B1st LEVEL

Items to be found on this level

MAGIC CAP ✓
GARDA BOOTS ✓
6400 MST ✓
8600 MST ✓
12000 MST ✓



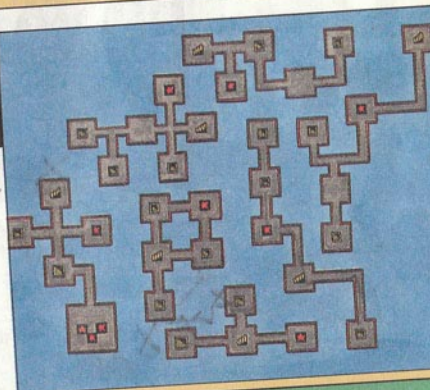
Hints for this level

Reach the ground through the first basement level.
There is a container on this level.
Remember that the Skure Space Port starts from the first level and stretches to the ground.

B2nd LEVEL

Items to be found on this level

MAGIC CAP ✓
MOGIC CAP ✓
18000 MST ✓
5600 MST ✓
15000 MST ✓
7800 MST ✓



Hints for this level

You must go to the second basement level to reach the ground.

ZOSA TOWN

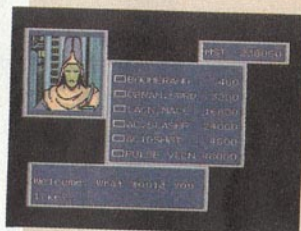
Wear a magic cap when asking for information in town.



The first town on Dezo is Zosa.

Learn how to use the magic cap and magic cap in the towns on Dezo.

If you wear the magic cap, the people on Dezo will only tell you lies. Also, the price of items in the shops is different when you are wearing the magic cap.



The price of items doubles if you go into a shop with the magic cap on.

BUILDINGS IN ZOSA

- TELEPORT STATION
- DATA MEMORY
- CLONE LABS

- HOSPITAL

TOOL SHOP

DIMATE 60
HIDAPIPE 280

ARMORER'S STORE

BOOMERANG 480
CERAM SWORD 3200
LACN MACE 16800
AC SLASHR 24000
ACIDSHOT 4800
PULSE VLCN 48000

PROTECTIVE GEAR STORE

LACONIAMET 29000
LACONINISH 35000
LACONCAPE 36000
LONG BOOTS 6800
SHUNEBOTS 7500
LACON EMEL 12000

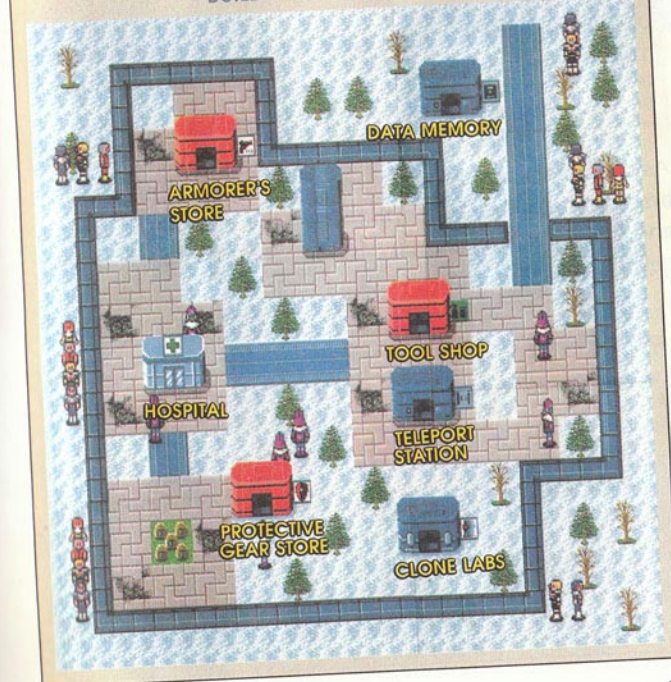
Do not take Shir to Dezo.

You must return to Paseo on Mota if Shir steals from a shop on Dezo.



Return to Paseo on Mota if Shir steals on Dezo.

BUILDINGS IN ZOSA



AUKBA TOWN

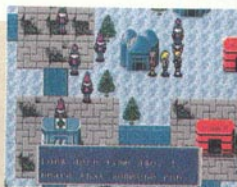
Aukba is the most important town on Dezo.



Ask for information at Aukba.



The townspeople will tell you about the secret of the Crevice.

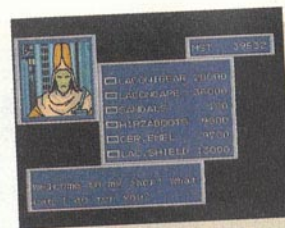


They will tell you about the people who escaped from Palm.

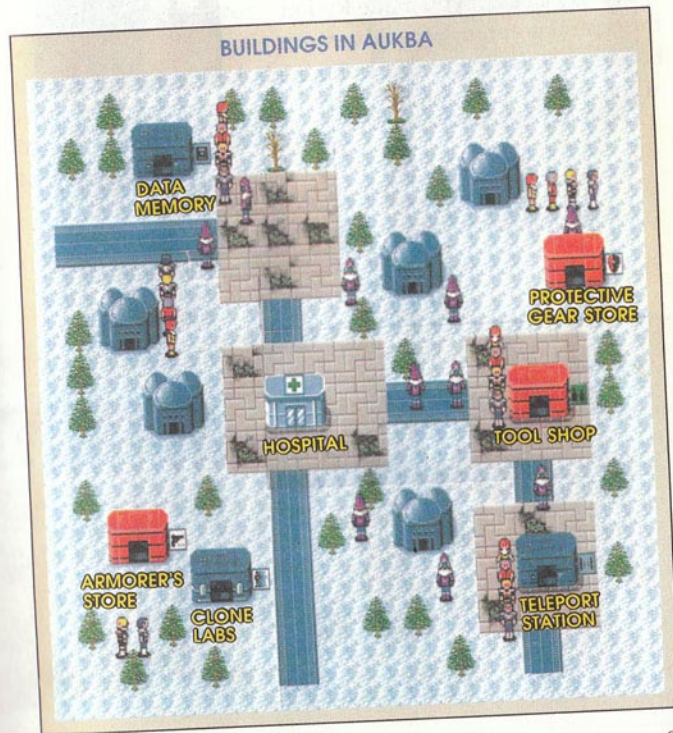
Ask the townspeople for information immediately upon arriving at Aukba. They will tell you the story of the Crevice and the Esper Mansion in Alplatin. Wear the magic cap to get information.

BUILDING IN AUKBA		
● TELEPORT STATION	● CLONE LABS	
● DATA MEMORY	● HOSPITAL	
TOOL SHOP		
MONOMATE 20		
TELEPIPE 130		
ARMORER'S STORE		
● CERAM SWRD 3200		
● LASER KNIFE 4400		
● LACNI MACE 16800		
● AC SLASHR 24000		
● LASER SHOT 6200		
● PLS CANNON 32000		
PROTECTIVE GEAR STORE		
● LACQNGEAR 28000		
● LACONCAPE 36000		
● SANDALS 180		
● HIRZABOOTS 9800		
● CER EMEL 9700		
● LAC SHIELD 13000		

The weapons sold at a weapons shop and armorer's shop on Dezo are very powerful and efficient. However, they are very expensive, so be careful when buying them.



How expensive!



RYUON TOWN

It is best to make Ryuon your central point for your adventure on Dezo.



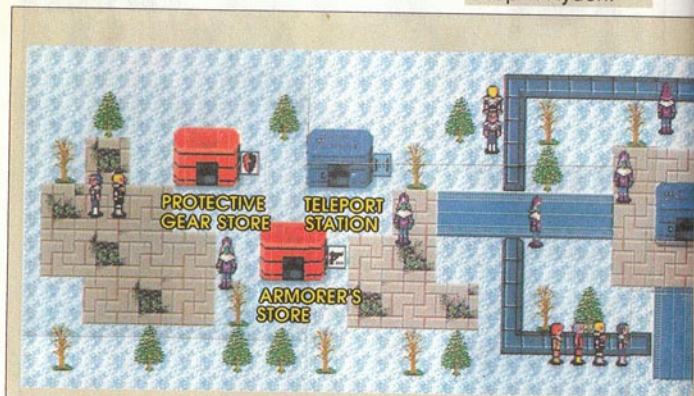
Ryuon is the last town on Dezo.

Ryuon is the last of the three towns on Dezo.

It would be best if you made Ryuon the central point for your adventure because Trimate can only be obtained at a tool shop in Ryuon.



Buy plenty of Trimate at the tool shop in Ryuon.



BUILDINGS IN RYUON

- TELEPORT STATION
- DATA MEMORY

- CLONE LABS
- HOSPITAL

TOOL SHOP

TRIMATE 160
ESCAPIPE 70

ARMORER'S STORE

KNIFE 100
LASR SLSHR 6700
LAC DAGGER 18400
LAC SWORD 22000
VULCAN 12600
LSR CANNON 20000

PROTECTIVE GEAR STORE

RIBBON 80
LACONINISH 35000
LACONCHEST 28000
GARDABOOTS 12400
LACON EMEL 12000
LAC SHIELD 13000

The information from the people of Ryuon is not very useful. However, three armors made of Laconia are sold at a shop in this town. Also, it is convenient because Trimate is sold at a tool shop.



Buy the armor made of Laconia, despite its high price.



CREVICE

The Crevice is an underground dungeon.



ENEMIES THAT APPEAR UP TO THIS STAGE



AEROTANK



RABITTA



GHX



MASTODON



OWL TALON



ELETTUSK



ELEPHANT

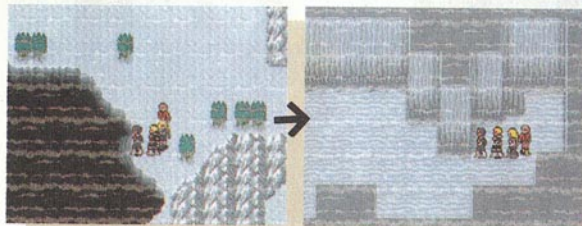
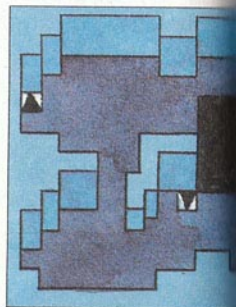


SPECTER

Where does the Crevice connect to?

Go through the Crevice to reach the Esper Mansion in Alplatin.

Take a good look at the Crevice near Aukba. You see wave rings spreading. Enter there to enter the Crevice.



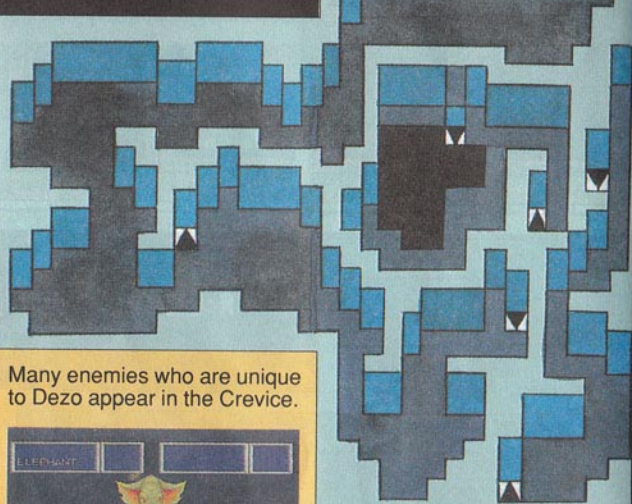
Enter the wave rings to enter the Crevice.

B1st LEVEL

Hints for this level

In the Crevice, several chutes go up to the ground. However, only one chute goes to the Esper Mansion. Use the chutes on the first basement level to reach the maze which is connected to the Esper Mansion. Watch out for pitfalls.

B2nd LEVEL



Many enemies who are unique to Dezo appear in the Crevise.



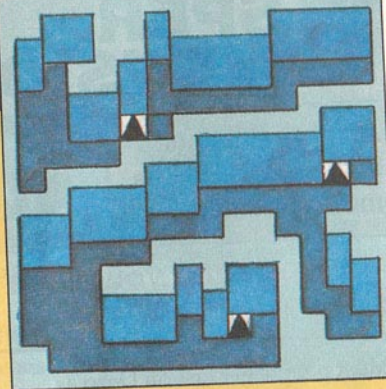
Hints for this level

There are seven chutes in the dungeon on the second basement level in the Crevise. You will reach Alplatin depending upon which chute you choose. Your opponents on this level are very powerful. We suggest you return to town and recover your strength rather than fighting enemies who will drain your energy.

B3rd LEVEL



Your goal is close when you arrive at the third basement level.



Hints for this level

Once you arrive at the third basement level, you can easily reach the ground where the Esper Mansion is located in Alplatin. However, after reaching the ground, it is still a long journey to the Esper Mansion. We hope you have not drained your strength.

You have finally reached your goal, Alplatin!



ESPER MANSION

At this point your adventure becomes more difficult.



What awaited you at the Esper Mansion?

Most people get lost on Dezo as they don't know about the Crevice and Esper Mansion.

Your adventure cannot proceed without the item which you should receive from someone at the Esper Mansion.

Pass through the Crevice to get to the Esper Mansion.

Someone awaits you.



Pass through the Crevice and enter the Esper Mansion.



Someone awaits you in the Esper Mansion. Enter the basement of this building.

Awakened from a long sleep, Lutz gives you an item.

The one who has been sleeping in the basement is Lutz with the Esper power.

He escaped from the Esper hunting by Mother Brain and has been waiting for warriors who are against Mother Brain.

Lutz tells you about the items hidden in the four dungeons which you will visit later, the secret of Dezo, and the destiny of the Agent. Lutz then gives you the Prism.



Lutz awakens from a long sleep.



The secret of Dezo which Lutz tells you is very important information for you.

What is the secret of the Prism?

With the Prism Lutz gives you, you can see what you could not see before and your adventure expands.



MENOBE

Menobe is a
dungeon near
Aukba.



Use the prism Lutz gave
you.

Using the prism, you can finally
see the geography of Dezo. Your
adventure expands with the
prism. You will find four dun-
geons - and each one is unique!
Remember, attack is difficult
unless you read the map care-
fully. The first dungeon is
Menobe.



Two items of Nei
are hidden in
Menobe.

To those who sold the items
obtained at the Dams.

Some may have sold the items obtained at the Dams
because they are in high demand.
These items are hidden in containers in the four dungeons.

Decide your companions.

Very strong enemies
appear in the dungeons on
your adventure.
Since you will be easily
defeated if your level is
low, you should decide
your companions now.
Then, improve their indi-
vidual levels steadily. A
way to increase their
individual levels faster is to
fight with fewer companions in your party.
While this will make their levels increase faster, the danger
is also much greater.



The party of Rolf, Rudo,
Anna, and Kain would be
ideal.

ENEMIES THAT APPEAR UP TO THIS STAGE



WRESTLER



MYSTCAPE



DARKSIDE



SAKOFF



ILLUSNT



GLOSWORD



MR. DEATH



SHADOW



MESOMAN



1st LEVEL

Items to be found
on this level

NEI CROWN



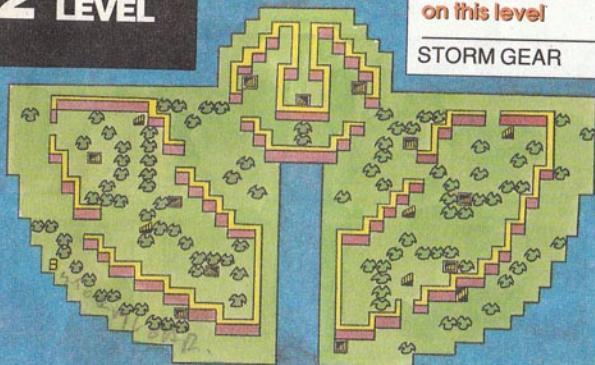
Hints for this level

When entering the dungeon, you will see that the passage at the center of the first level is connected to three rooms, to the right, left, and at the end. Your destination is determined depending upon which room you enter first.

2nd LEVEL

Items to be found
on this level

STORM GEAR



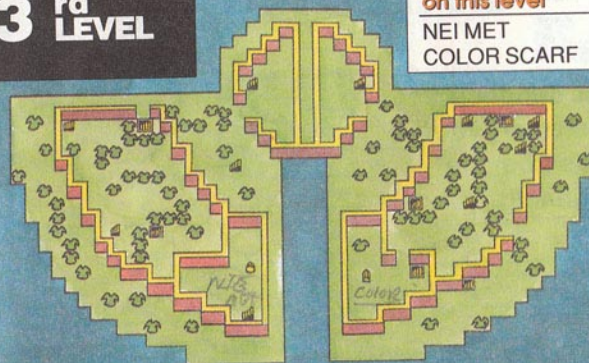
Hints for this level

Starting from your destination in reverse, check the map of the first, third, and fourth levels carefully. The rooms at the right and left are connected in different directions on the second level.

3rd LEVEL

Items to be found
on this level

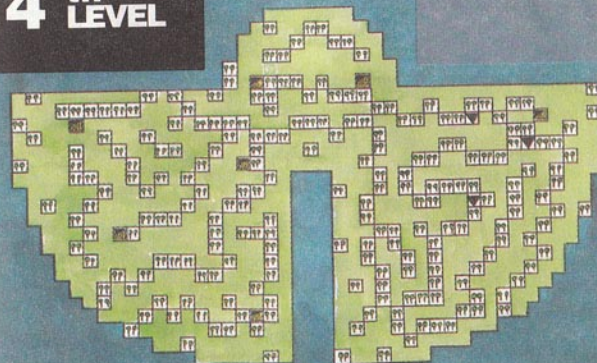
NEI MET
COLOR SCARF



Hints for this level

There are two containers, one contains Neimet. The dungeon is divided into small rooms. Think carefully to reach your goal. Check the map carefully.

4th LEVEL



Hints for this level

Although it is the upper level, you have not yet reached your final goal. Trees bar your way and a strong enemy awaits you.

GUARON

This dungeon challenges your skills from the beginning.



Guaron is a 16 level dungeon.

You must think how to go through the dungeon with your restricted strength. Follow the route in reverse starting from the container, or you will be lost. The route to your goal is determined on the first level.



The circumference of the building is part of the dungeon.

ENEMIES THAT APPEAR UP TO THIS STAGE



FIREFALL



MXDRAGON



KINGLAVA

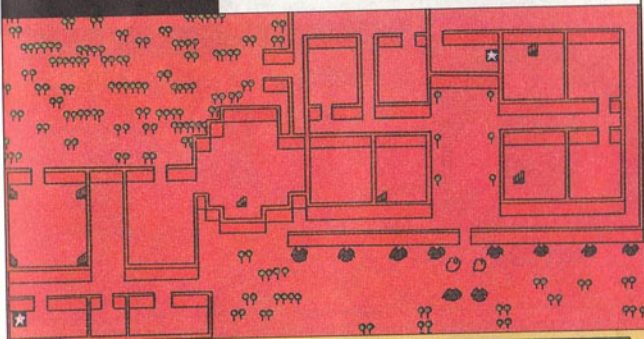


VORCANO

1st LEVEL

Items to be found on this level

LACONINISH AMBER ROBE



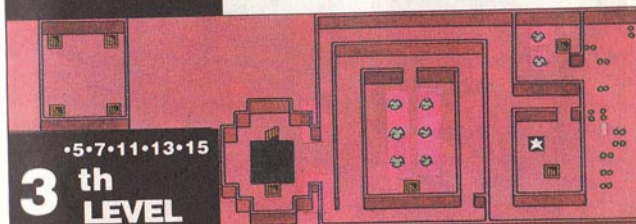
Hints for this level

Remember that the circumference of the building is part of the dungeon, or you will be lost on the first level.

2nd LEVEL

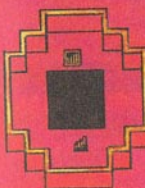
Items to be found on this level

CRYSTCHEST



3th LEVEL

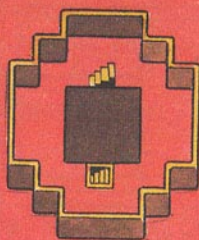
•5•7•11•13•15



Hints for this level

The area is divided into two rooms on the second level. There is only one passage for you to reach the next level. The third, fifth, seventh, eleventh, thirteenth and fifteenth levels are passages to the upper levels.

4 6•10•12•14 th LEVEL



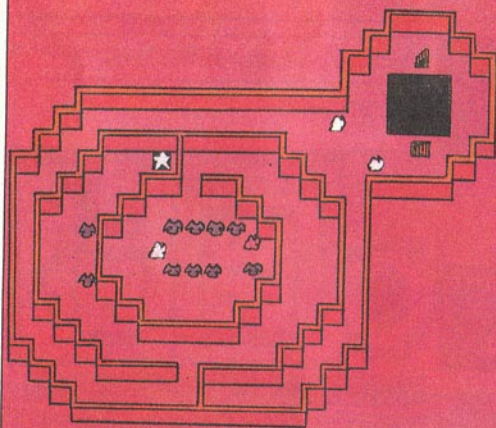
Hints for this level

There is only one passage for you to reach the next level.

8 th LEVEL

Items to be found on this level

NEI CAPE



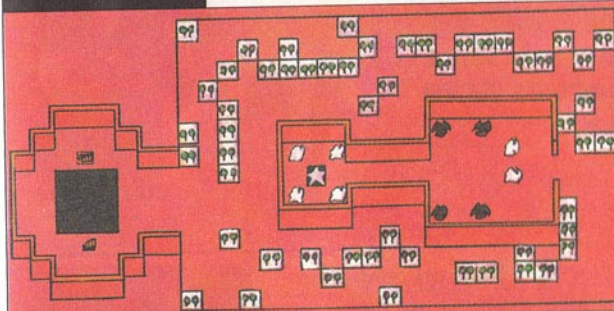
Hints for this level

These levels are passages to go up or downstairs. Remember which level you are on.

9 th LEVEL

Items to be found on this level

CRYST CAPE



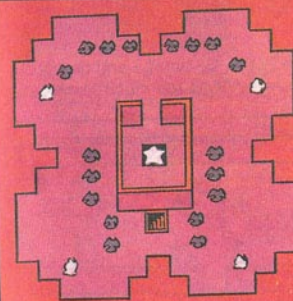
Hints for this level

There is one container holding an item. The way there is easy, but the enemies who await are stronger.

16 th LEVEL

Hints for this level

The container at the center of the ninth level contains Crystalscape. Regard the others as passages to the upper levels.



Items to be found on this level

NEI ARMOR



This is the top level. There is Neiarmor in the container on this level.

KUTO

If you fall into a pitfall, you cannot go upstairs via the stairs.



The dungeon of Ikuto is the hardest of all on Dezo.

Most levels in Ikuto are connected by pitfalls. You must use the pitfalls to go downstairs. Remember, however, in most cases you can use the Hinas technique or an Escapipe to go upstairs.



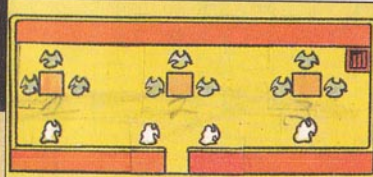
There are pitfalls already on the first level.



Be careful and do not use too much technique.

1st LEVEL

Hints for this level



There is one stair and three pitfalls on the first level.

ENEMIES THAT APPEAR UP TO THIS STAGE



WIZARD



DESRONA



RED DRAGON



LUNG



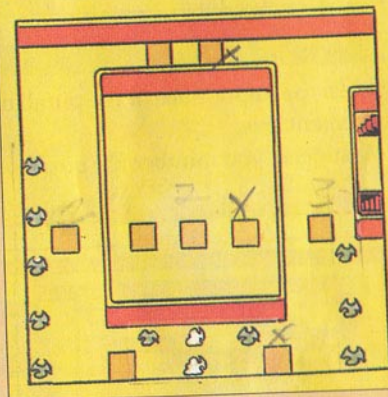
CAPEONE



B1st LEVEL

Hints for this level

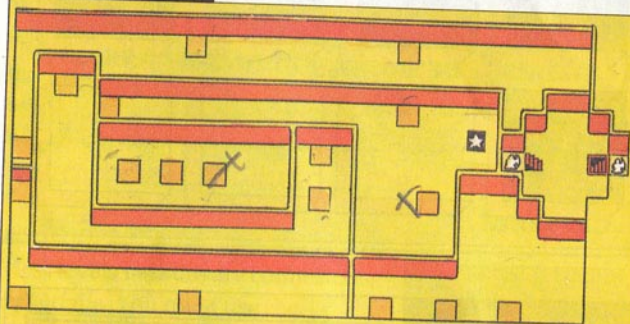
There are already nine pitfalls on the first basement level. You may fall to the bottom if you are not careful.



B2nd LEVEL

Items to be found on this level

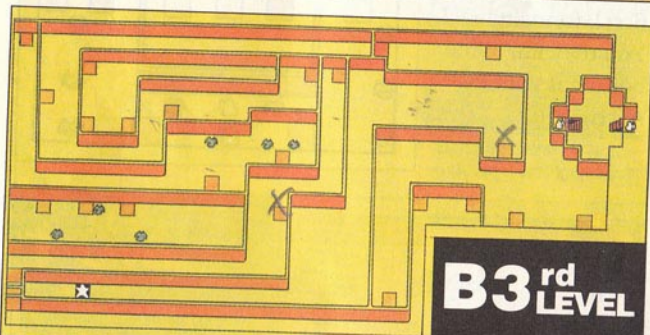
LAC DAGGER



Hints for this level

Learn the importance of the pitfall on the second basement level.

We suggest you number the pitfalls.



Hints for this level

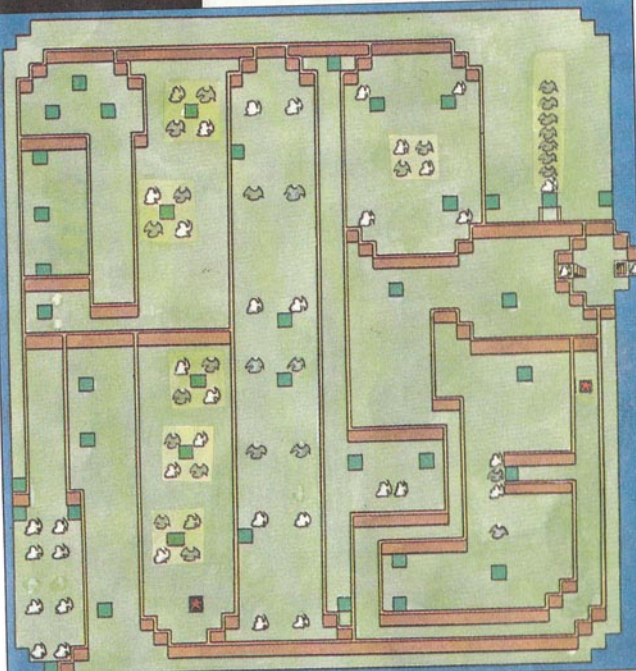
The third basement level is wide and you will see how difficult it is to reach the container.

B4th LEVEL

Items to be found on this level

FIRE STAFF

LAC MACE



Hints for this level

This level is the largest of all and it has forty pitfalls.

Think carefully to prevent falling through the pitfalls. There is one container.



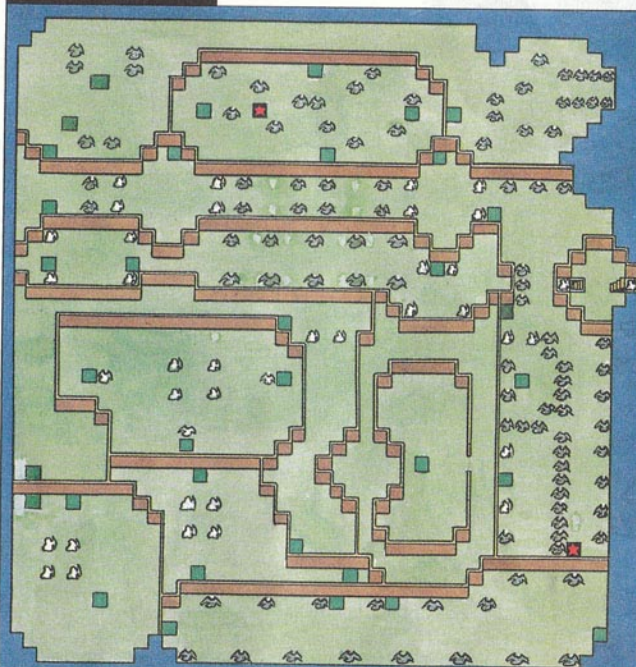
Return to town and recover your strength if you use too much technique.

B5th LEVEL

Items to be found on this level

NEI SHOT

NEI SLASHER

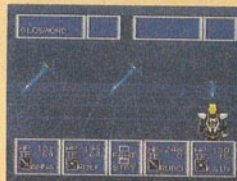


Hints for this level

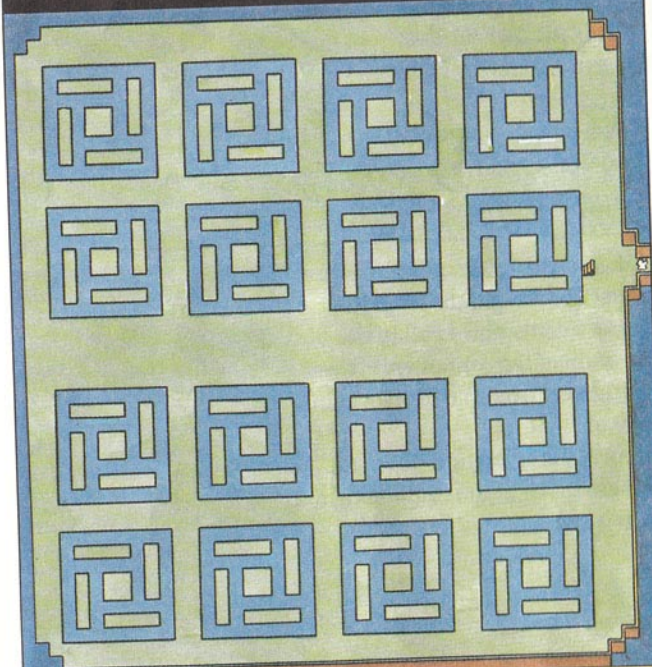
Two items of Nei's are hidden on this fifth basement level.

Remember by which pitfalls you arrived here and confirm the location where you fell or you will never reach the container you found.

Your opponents are stronger.



B6th LEVEL



Hints for this level

There is nothing on the sixth basement level. You arrive here if you fall into the wrong pitfall.



There is one stair to return upstairs.

NAVAL

You can get all the items of Nei in this dungeon.



Naval is a five level, round dungeon.

Like the dungeon of Ikuto, you must use the pitfalls to go to different locations. Fall to the location of the container on the sixth level from the fifth level in Naval.

Repeat going up and down to obtain items in the containers in this dungeon.

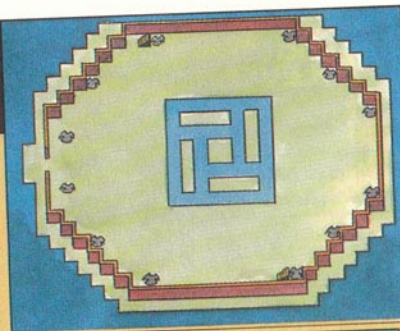
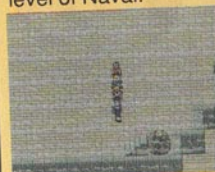


Naval is the last dungeon on Dezo.



1st LEVEL

There is no container on the first level of Naval.



Hints for this level

A wall divides the first level into an internal side and an external side. There are stairs on each side. Your ability to go upstairs is determined by these two stairs. The dungeon structure is simple.

ENEMIES THAT APPEAR UP TO THIS STAGE



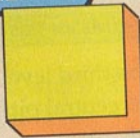
ARCH DRGN



IMAGI



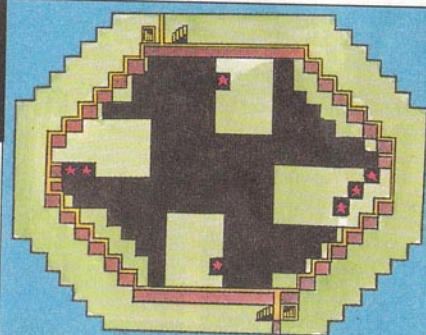
MG FIEND



2nd LEVEL

Items to be found on this level

NEI SHIELD
TRIMATE
TRTH SLEEVES
NEI EMEL
GR SLEEVES
LACON EMEL
MIR EMEL



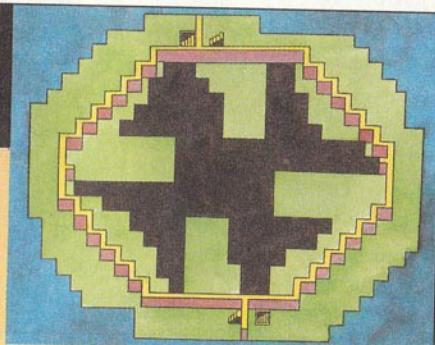
Hints for this level

All the containers in Naval are on the second level.
However, you must go to the fifth level to reach them,
so read the map carefully.

3rd LEVEL



The room is
separated to the
right and left.



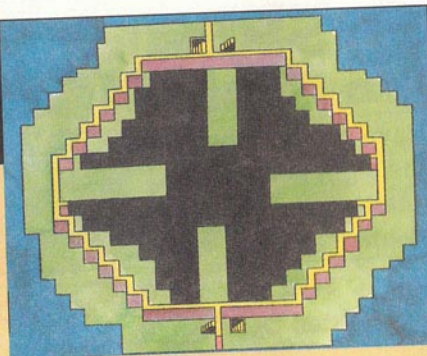
Hints for this level

The third level is a passage leading upstairs. Remember
the central pitfall and passage. Your enemies are power-
ful.

B4th LEVEL



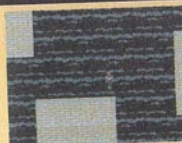
You will be injured
by powerful
enemies.



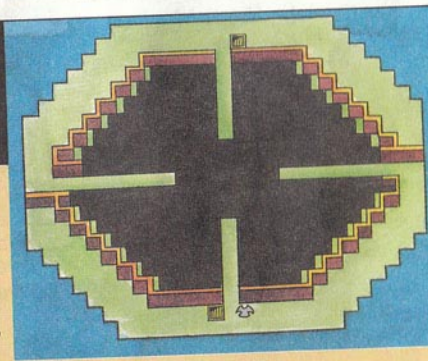
Hints for this level

The fourth level is also a passage.
Remember that the central pitfall and passage are
slightly misaligned.

B5th LEVEL



If you are careless,
you only fall to the
first level.



Hints for this level

Now, you must fall downstairs.
Your destiny is determined depending upon which of
the four passages you fall through. Check the floor
maps carefully.

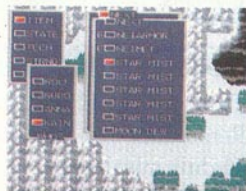
ESPER MANSION

Have you obtained the eight items of Nei (such as Neislasher, Neimet, etc.)?



Go to see Lutz to face your final battle.

Once you get the eight items of Nei on Dezo, Lutz will take you to the location called Noah. Noah is your final battlefield! Take plenty of medical supplies, Star Mist, and Moon Dew. You are advised to use Neisword to return to the Esper Mansion if you are injured at Noah.



Do you have all eight items of Nei?



Use Shir to steal plenty of Star Mist.



Use Neisword while at Noah to return to the Esper Mansion if necessary.

NOAH

Noah is the last dungeon in Space.



Mother Brain awaits you at Noah.

Noah is a two level dungeon. Read the map carefully. The dungeon of Noah is not so difficult, but your opponents are strong, so check your location and the stair directions. Do not waste your energy before fighting Mother Brain.

Climb this stair first.



Your strongest opponents appear.



1st LEVEL



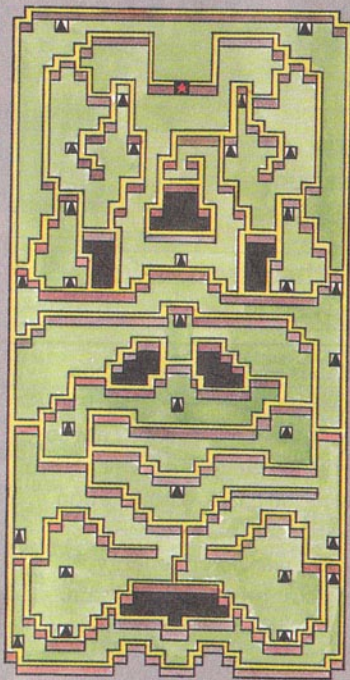
Climb this first level.



Your most powerful enemies appear in this last dungeon.

Hints for this level

The first level is wide but uncomplicated. Check the map carefully and find where the stairs lead to on the second level. The enemy is strong. Use the Megid technique against the enemy if your level is low. Use Neisword to return to the Esper Mansion. Repeat this to improve your companion's levels.



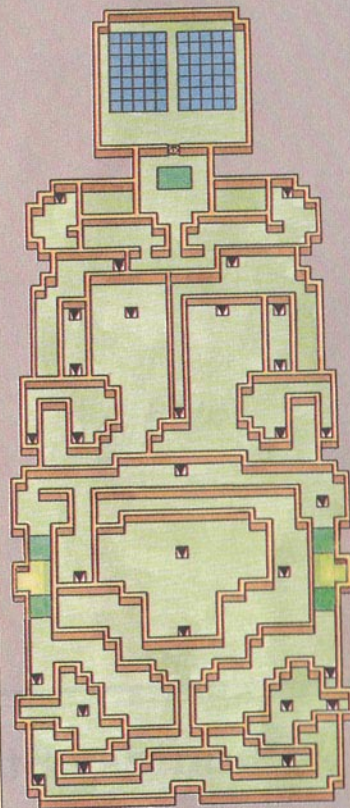
2nd LEVEL

Hints for this level

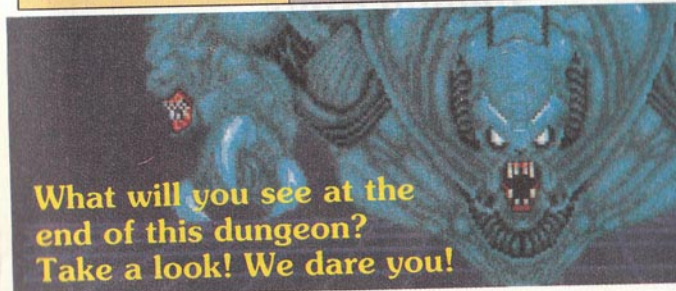
The container is on the second level. Open the container only if you have enough strength. You will know why when you open it. A shocking last scene awaits you at the top on this level.



The worst enemy you have ever met, Dark force.



What will you see at the end of this dungeon?
Take a look! We dare you!



Phantasy Star II
Helpful Hints

by

SEGA ENTERPRISES. LTD.

Copyright © 1990

PHANTASY
STAR II

HINT BOOK

SEGA®