

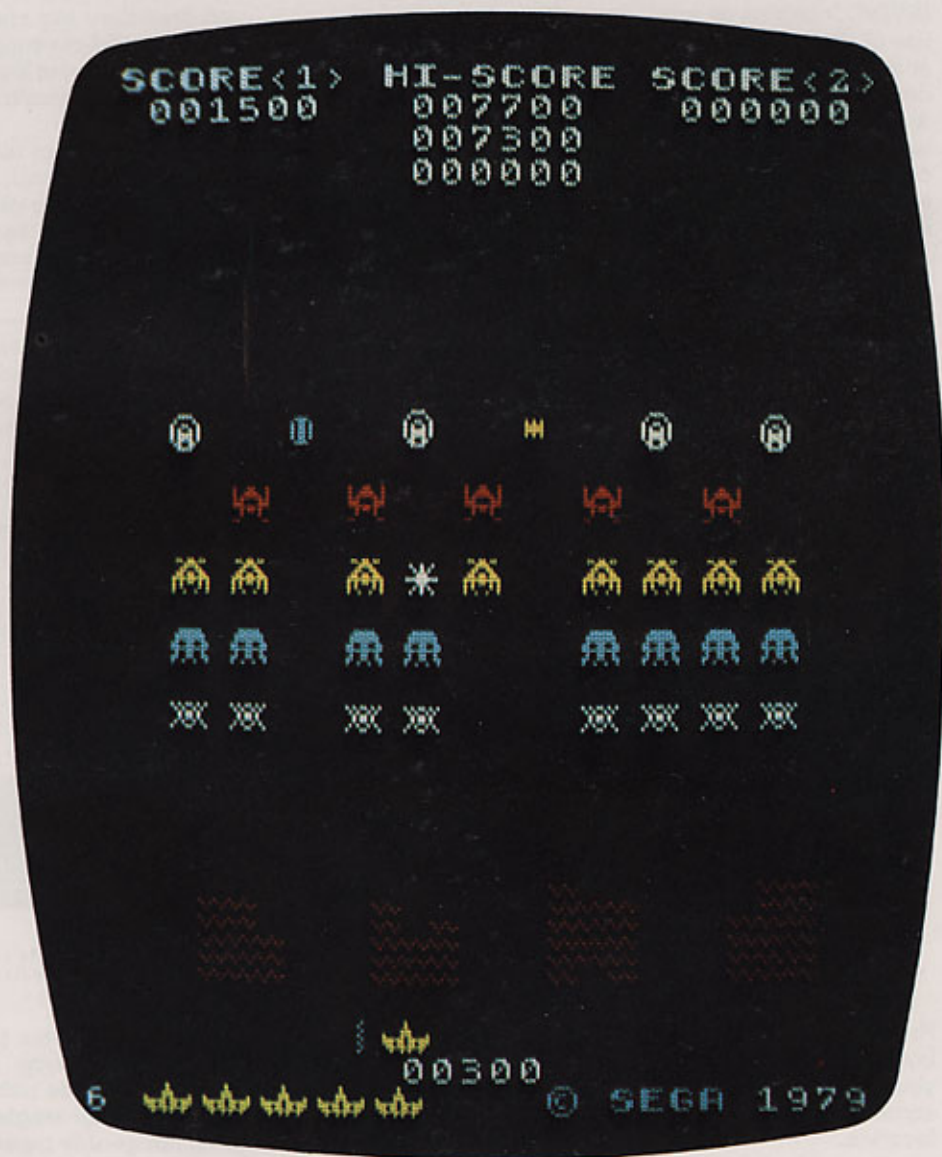
# INVINCO™



The battle is on! And Gremlin's new INVINCO puts you right in the middle with exciting new video fun.

All the INVINCO action is in thrilling color. Realistic sounds heighten the excitement with every shot you take and every enemy warrior you hit. The action is fast-paced, so it's a real test of speed and coordination.

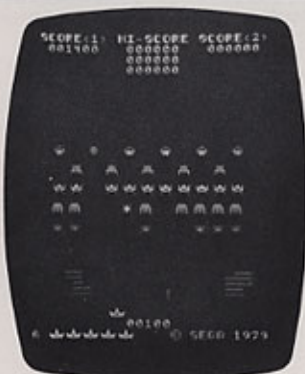
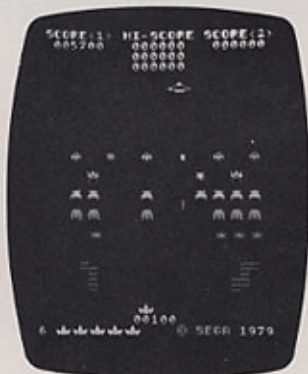
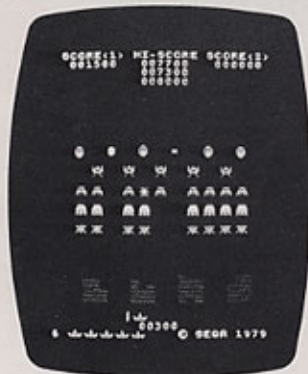
And INVINCO is another great Gremlin MultiPhase™ game. So it keeps challenging your players' skills as they improve, for replay profits you can count on!



**Gremlin/SEGA®**  
The games people REALLY play.

# INVINCO

## PLAY ACTION



INVINCO begins as you fire at the attacking rows of warriors above your defense wall with your weapon. As soon as they break through your defense, you and the enemy are face to face in a raging battle.

Keep firing at the columns of warriors to knock out as many as you can and increase your score. And take your best aim at the upper rows of warriors for higher points. When you destroy all the enemy warriors the first time, they'll try to get even:

out flies their sky chariot, blasting and zig-zagging its way to get you! If you're quick enough, you'll hit it first.

If you knock out all the enemy troops again, you'll be up against two of their evil sky chariots. And destroying all the warriors

a third time brings triple trouble: three sky chariots come out, firing away like crazy!

That's INVINCO . . . fast-paced and challenging beyond belief. With action that really builds! Let it start the battle for profits at your location soon.

## CONTROLS



**Player Controls**—These include Right and Left Control Buttons for moving your warrior. There's also

a Fire Button for shooting at enemy troops. And the one and two player Start Buttons are prominently placed to encourage multi-player use.

**Operator Controls**—These feature Gremlin's

exclusive E-Z ADJUST™ controls for volume and sound-off during advertising. You can also change the number of player weapons to vary play time simply by setting a switch on the logic board.

## CABINET MODELS



**Arcade**  
25½" W x 67" H x 28" D  
64.77cm W x 170.18cm H x 71.12cm D  
290 lbs./132 kg.



**Cocktail**  
22" W x 34" L x 24½" H  
55.88cm W x 93.98cm L x 62.23cm H  
80 lb./36 kg.



**Stand-Around**  
40" H x 25½" W x 44" L  
101.6cm H x 64.77cm W x 111.76cm L  
200 lbs./91 kg.



**MiniVideo**  
22" H x 21" W x 20" D  
55.88cm H x 53.34cm W x 50.8cm D  
80 lbs./36 kg.

Now Gremlin gives you both the video excitement you want and the cabinet styles you need to fit every location.

The Arcade cabinet can be equipped for either single game or dual. Our Cocktail and Stand-Around models can be

fitted for dual game play. And the new, space-saving MiniVideo cabinet is available for single interchangeable games.

See your Gremlin distributor today for more information on the Gremlin games available in these new cabinet styles.

**Gremlin/SEGA**  
The games people REALLY play.

GREMLIN INDUSTRIES, INC.  
8401 Aero Drive, San Diego, CA 92123  
(714) 277-8700 TWX 910-335-1621

DISTRIBUTED BY: