

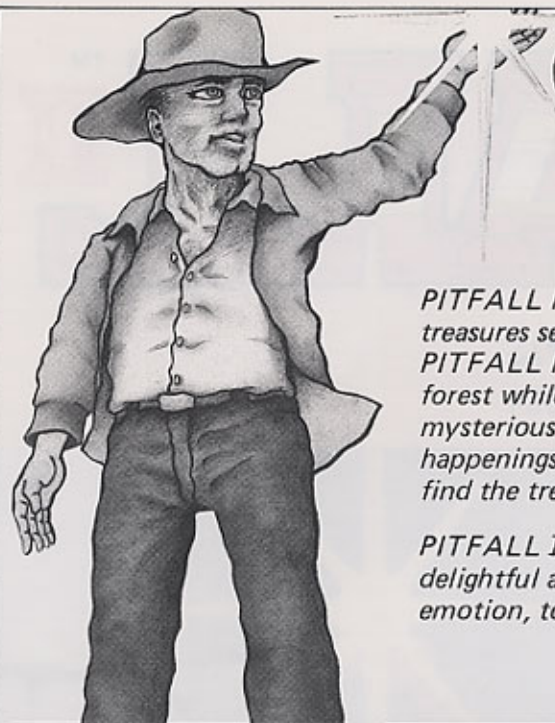
# PITFALL™ II

*The Lost Caverns*

©ACTIVISION, INC. 1984







# PITFALL II™

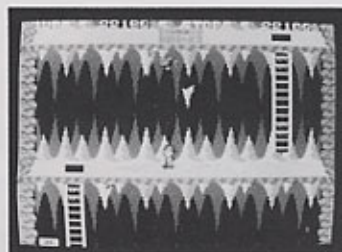
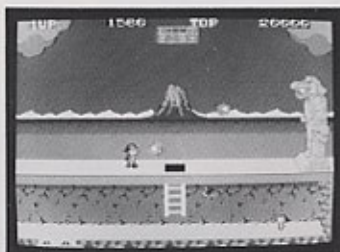
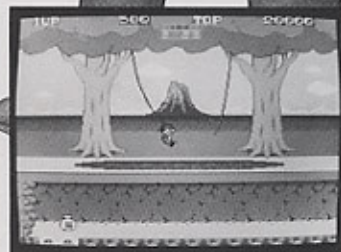
## The Lost Caverns

©ACTIVISION, INC. 1984

*PITFALL HARRY has now started his adventurous search to locate the treasures secretly hidden in the ancient caverns!*

*PITFALL HARRY proceeds forward, going over grassland and through the forest while overcoming various crises - - - - but once stepping into the mysterious underground caverns, he finds an intricate maze in which wonderful happenings and all kinds of dangers await him . . . . can he ever successfully find the treasures?*

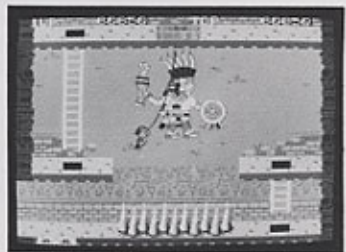
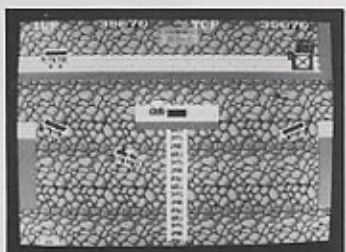
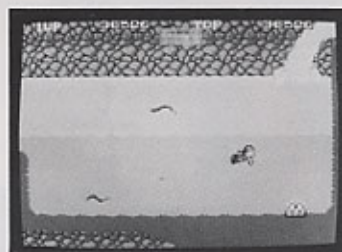
*PITFALL II—THE LOST CAVERNS is a thrill-packed, suspenseful and very delightful adventure game which requires the interplay of both logic and emotion, to aid you in successfully solving the riddles of the maze.*



PITFALL II—THE LOST CAVERNS and its predecessor, PITFALL, as home computer game software, were very popular and successful games worldwide, including in particular, the U.S.A. and Europe. For this coin-op version, numerous innovations have been incorporated, resulting in an arcade piece which contains many new additional features.

### HOW-TO-PLAY

- Locate the 3 treasures secretly hidden in the underground caverns by skillfully maneuvering PITFALL HARRY.
- Push the button to make PITFALL HARRY jump.
- When no more allotted time remains you lose one PITFALL HARRY. When picking up the BONUS treasures you earn points and additional play time.
- When capturing a key, a hole opens which allows you to proceed to the following cavern, with the remaining time converted and awarded as BONUS points.
- Adjustment to CONTINUE PLAY can be made by a DIP SWITCH change.



This game has been manufactured under license from ACTIVISION, INC., U.S.A. and PITFALL and ACTIVISION® are trademarks of ACTIVISION, INC.

Manufactured and distributed by **SEGA®**

Design and specifications subject to change without notice. SG-8501E © SEGA 1985

# SEGA®

Sega Enterprises, Ltd. 2-12, Haneda 1-chome, Ota-ku, Tokyo 144, Japan

Tel.: (03) 742-3171 Tlx: J22357 SEGASTAR Fax: (03) 745-3246

Sega Europe Limited 410-420 Rayners Lane, Pinner, Middx, HA5 5DY, ENGLAND

Tel.: 01-868 2331 Tlx.: 893501 SEGAUK G Fax: 01-429-3137