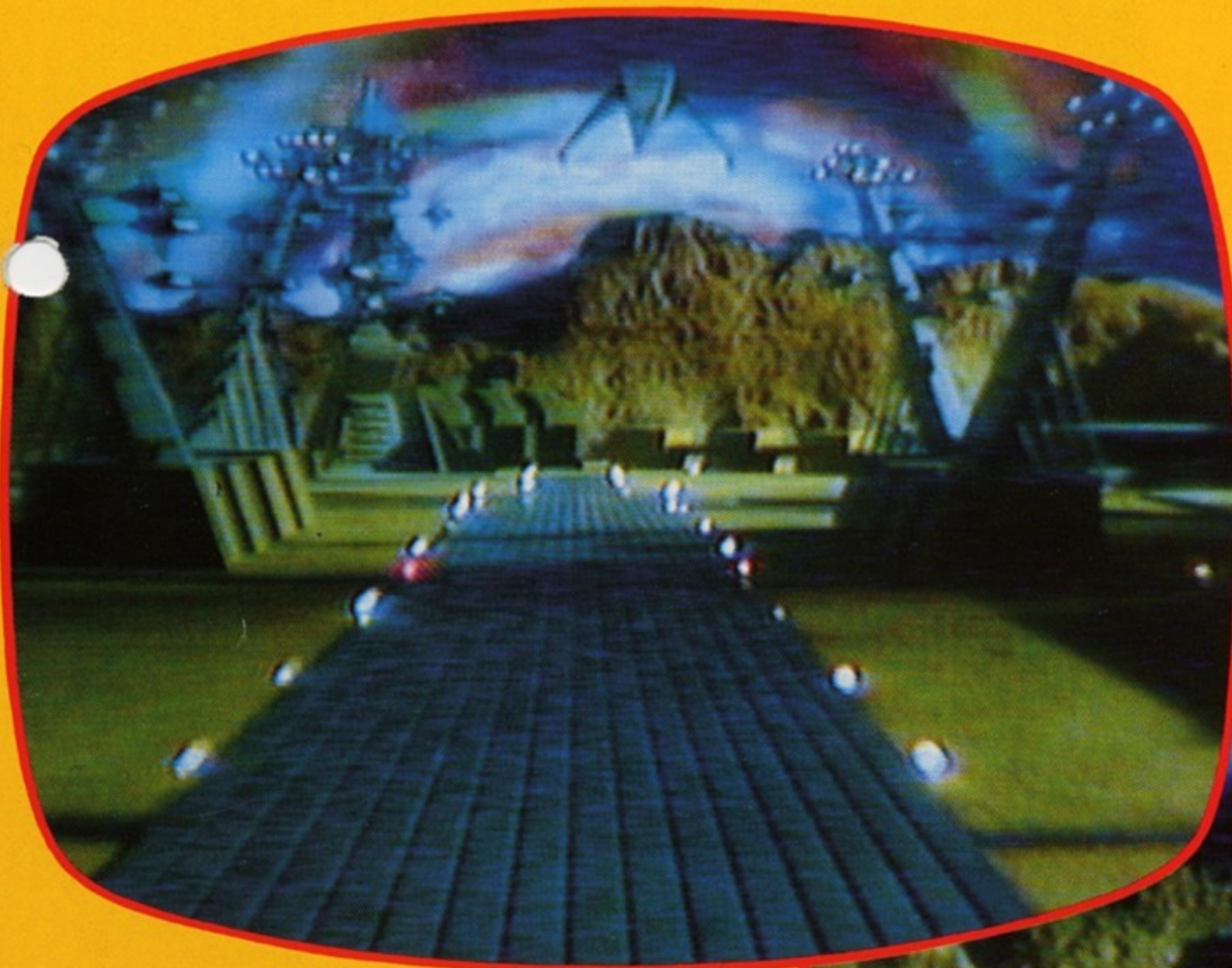


GALAXY RANGER



Bally Midway blasts off the launching pad with its newest space shoot-out - GALAXY RANGER. Spectacular special effects consume the player, transforming him into a modern space cowboy riding through a universe of danger, thrills and excitement. Armed with a trusty laser-cannon the player battles through a nearly endless series of hazards for a change to take on the ominous alien battle-cruiser.

A quick eye and sure aim separates the GALAXY RANGER from oblivion as he rockets across hostile deserts, through tunnels bristling with death-dealing lasers, over heavily defended alien cities and in astro-dogfights with lethal enemy space fighters.



an intergalactic laser video from *Bally* MIDWAY
T.M.

Galaxy Ranger is engineered and designed by Sega. Manufactured under license by Bally Wulff-Apparatebau GmbH. & C 1983 Sega.

GALAXY RANGER is a space fantasy all players can enjoy. A base/clock feature gives every player a minimum amount of game time controlled by an operator-adjusted switch. When the timer expires, the player continues on "bases" earned during timed play. Combined with the fast action of Galaxy Ranger's game play, this delivers greater earning life than "memory-type" video disc games. Galaxy Ranger's proven hardware and software systems prepared by craftsmen at Bally Midway and Sega keep downtime low and earnings up. And of course, GALAXY RANGER is backed by our industry-renowned service and parts network. So take a ride with the GALAXY RANGER and fill your saddlebags with profits.

Cabinet Specs

185,0 cm Height
62,5 cm Width
89,5 cm Depth



Galaxy Ranger is engineered and designed by Sega.
Manufactured under license by Bally Wulff-Apparatebau GmbH. & C 1983 Sega.

Bally MIDWAY MFG. CO.



PRINTED IN BELGIUM