

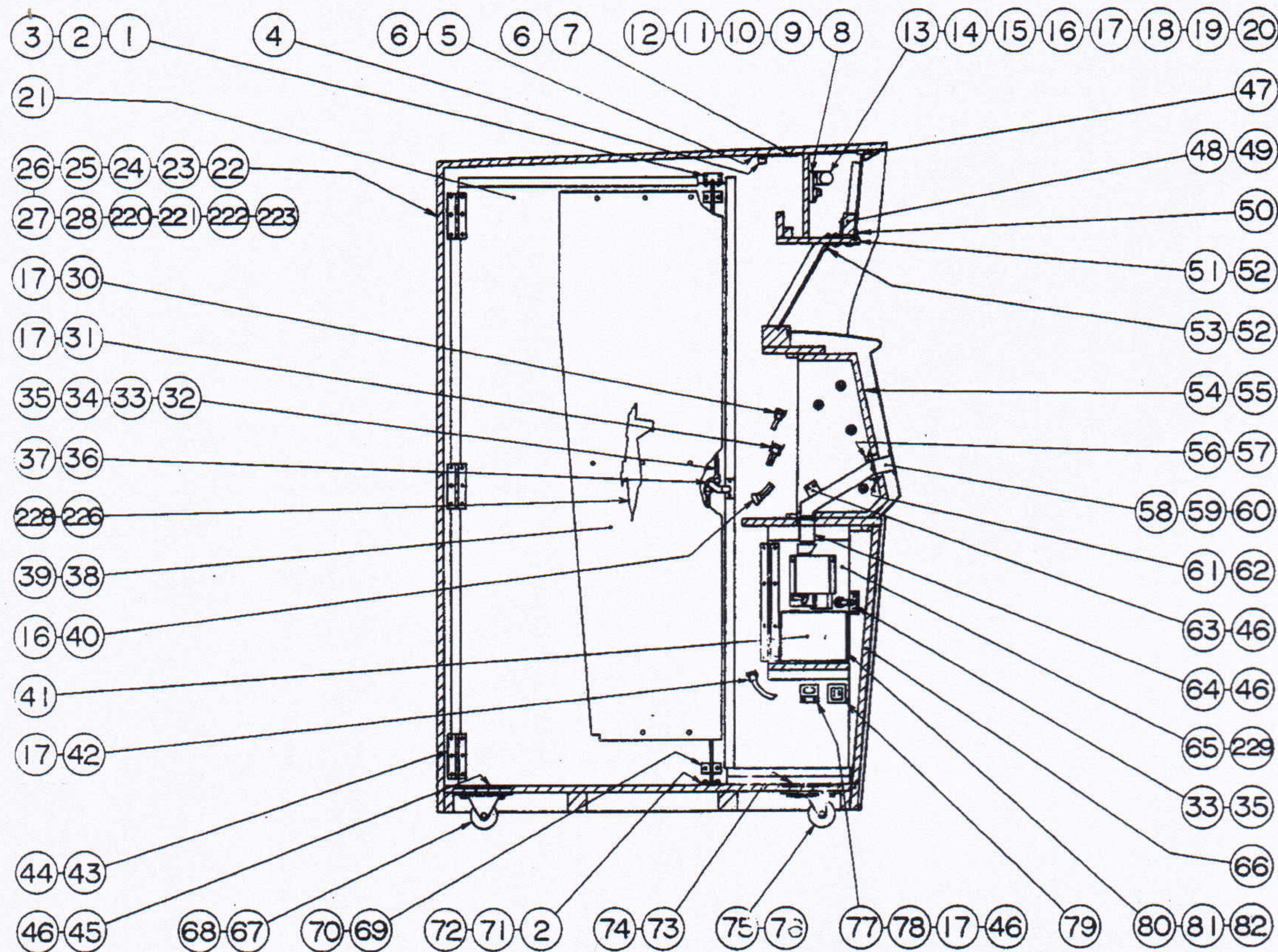
SEGA

JET ROCKET

PARTS CATALOG

SEGA

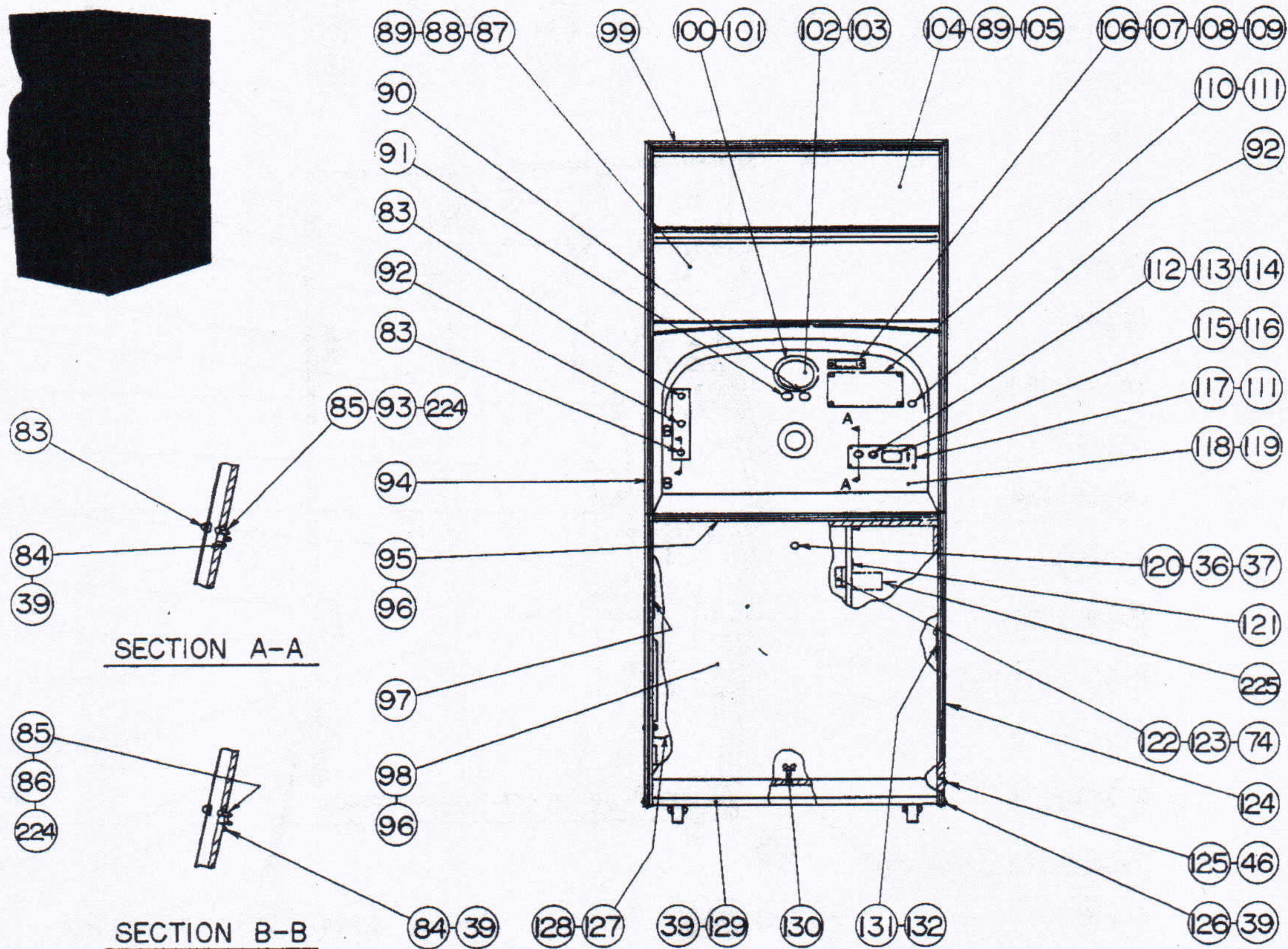
OFFERS YOU THE UNBEATABLE COMBINATION OF QUALITY AND PLAY APPEAL IN AMUSEMENT GAMES



Item	Part No.	Description	Item	Part No.	Description	Item	Part No.	Description
1	JR-1012	Latch Bracket	14	90687	Spring Type Fluorescent Lamp Socket Bracket	29	122-004	Wood Screw, R.H. Phill. 3.5×16
2	JR-1013	Latch Adjust plate	15	S-90202	Fluorescent Light, 20W		144-078	Flat Washer M4
3	111-601	M. Screw, P.H. Phill. ISO M5×8	16	S-91978-2	Pin Element	30	S-92011-1	Socket, 6P, Natural Color
	122-004	Wood Screw, R.H. Phill. 3.5×16	17	S-91978-1	Socket Element	31	S-92018-1	Socket, 4P, Natural Color
	144-105	Flat Washer M5	18	S-92021-1	Socket, 2P, Free Hanging Type, Natural Color	32	JR-1011	Lock Bar Ass'y
4	JR-1074	Glass Holder Lock Plate	19	S-92021-2	Plug, 2P, Free Hanging Type, Natural Color	33	SH-1019	Tongue Retainer Plate
5	JR-1017	Lock Bar Guide Bracket Ass'y	20	122-064	Wood Screw, R.H. Phill. 3.1×13	34	JR-1084	Tongue
6	111-665	M. Screw, P.H. Phill., ISO M4×20		133-104	Square Nut, ISO M4 (H=1.6 B=8)	35	122-064	Wood Screw, R.H. Phill. 3.1×13
	133-096	T-Nut, ISO M4		144-078	Flat Washer M4	36	SGJ-1096-3	Lock Retainer Plate
	144-167	Lock Washer, Ext. M4		111-710	M. Screw, F.H. Phill., ISO M4×14	37	LS-1064	Ace Cylinder Lock, L.S. Type
	144-078	Flat Washer M4	21	JR-1010	Side Door	38	JR-1045	Side Screen
7	JR-1016	Lock Bar Guide Bracket	22	JR-1001	Wooden Cabinet	39	122-080	Wood Screw, R.H. Phill. 3.1×16
8	91868	Ballast Coil, 100V, 20W, 50-60Hz.	23	S-90183	Clamp, Cord, Plastic, 15mm I.D.	40	S-91981-2	Plug, 12P, Brown
	91646	Ballast Coil, 115V, 20W, 50-60Hz.	24	S-90182	Clamp, Cord, Plastic, 12.7mm I.D.	41	JR-1072	Cash Box
9	SC-1044	Fluorescent Light Base	25	81030	Sticker, Service Instruction	42	S-91979-1	Socket, 3P, Natural Color
10	S-90264	Socket, Fluorescent, Starter, Bayonet Type		81031	Sticker, Service Instruction, English	43	GF-1005	Hinge
11	S-90244	Starter, Fluorescent Bayonet Type FG-1P	26	81032	Sticker, Service Instruction	44	122-004	Wood Screw, R.H. Phill. 3.5×16
12	122-064	Wood Screw, R.H. Phill. 3.1×13		81033	Sticker, Service Instruction, English		122-094	Wood Screw, F.H. Phill. 3.1×16
	122-080	Wood Screw, R.H. Phill. 3.1×16	27	81034	Sticker, Service Instruction	45	JR-1008	Caster Retainer Plate, A
	122-110	Wood Screw, R.H. Phill. 3.5×25		81035	Sticker, Service Instruction, English	46	122-004	Wood Screw, R.H. Phill. 3.5×16
	144-078	Flat Washer M4	28	SGM-1732	Polyethylene Cover, 885×1,350×2,000	47	JR-1073	Glass Holder Plate
13	S-90260	Socket, Fluorescent Light,				48	JR-1080	Score Board Ass'y (See Page 6 For Detail)
						49	111-659	M. Screw, P.H. Phill., ISO M4×16
							133-096	T-Nut, ISO M4
							144-078	Flat Washer M4

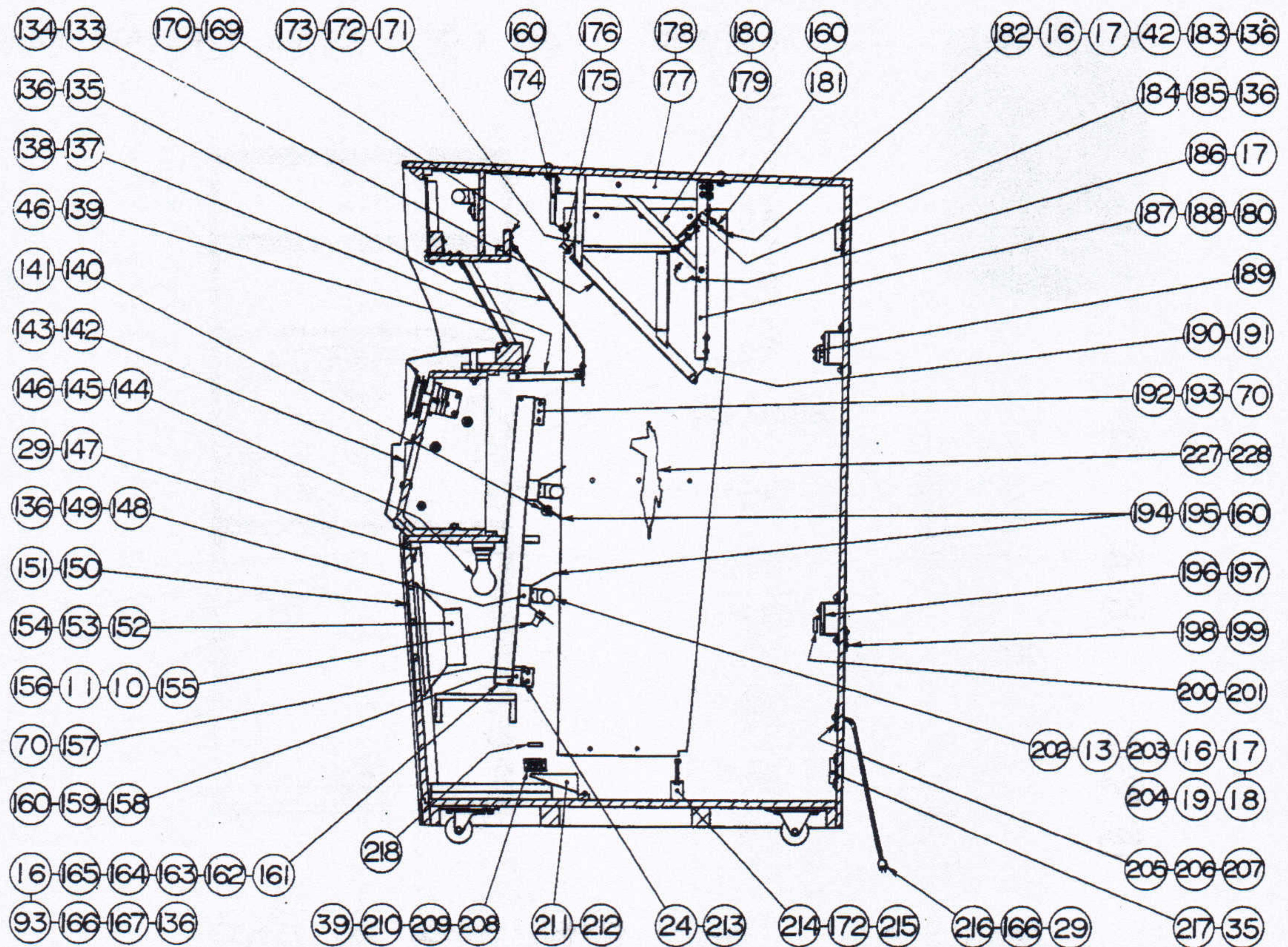
CONTINUE NEXT PAGE

M.Machine T.Truss H.Head Hex.Hexagon
 R.Round C.Cheese Phill.Phillips Ass'yAssembly
 F.Flat P.Pan Ext.External



em Part No.	Description	Item Part No.	Description	Item Part No.	Description	
50	144-167 Lock Washer, Ext. M4	62	111-712 M. Screw, P.H. Phill., ISO M5x20	78	S-91984-1 Socket, 15P, Natural Color	
51	JR-1079 Window Ornament		133-097 T-Nut, ISO M5	79	S-91449 Outlet, AC Type	
52	111-717 Carriage Bolt, Chromed, ISO M5x25		144-105 Flat Washer M5	80	JR-1066 Cash Box Cover	
	133-090 Hex. Nut, ISO M5		144-149 Lock Washer, Ext. M5	81	SH-1018 Rail	
	144-149 Lock Washer, Ext. M5	63	JR-1064 Entry Chute	82	111-714 M. Screw, F.H. Phill., ISO M4x20	
	144-024 Flat Washer, Special 5.6-19.1x1.2	64	JR-1065 Lower Chute		133-096 T-Nut, ISO M4	
53	JR-1031 Glass Holder	65	JR-1049 Coin Chute Door Ass'y (See Page 6 For Detail)	83	91826 Lamp Cover, w/Nut	
54	JR-1002 Instrument Panel Base Box	66	JR-1005 Front Door	84	GP-1057 Lamp Bracket	
55	111-099 Hex. Bolt M8x40	67	S-81012 Caster, Rubber Wheel	85	90794 Lamp Socket	
	111-774 Carriage Bolt, Chromed, M6x45	68	111-121 Hex. Bolt M8x35	86	S-90821 Bulb, 6-8V	
	133-003 Hex. Nut M6		144-132 Spring Washer M8 (#2)	87	JR-1068 Front Glass	
	133-115 T-Nut M8	69	SB-1032 Guide Bracket	88	JR-1030 Sash, 238	
	144-124 Flat Washer 6.5-19x1.2	70	111-663 Carriage Bolt, Chromed, ISO M5x30	89	SC-1024 Window Sash, 758	
	144-194 Flat Washer, Special 8.5-20x1		133-090 Hex. Nut, ISO M5	90	92032 Lamp Cover, w/Nut, Red	
	144-115 Spring Washer M6 (#2)	71	JR-1014 Latch Plate	91	92033 Lamp Cover, w/Nut, Green	
	144-132 Spring Washer M8 (#2)	72	111-601 M. Screw, P.H. Phill., ISO M5x8	92	92034 Lamp Cover, w/Nut, Green	
56	GP-1028 Coin Entry Base, B		122-004 Wood Screw, R.H. Phill. 3.5x16	93	S-91002 Bulb, 6-8V, #44	
57	111-595 M. Screw, P.H. Phill., ISO M4x6		144-078 Flat Washer M4	94	JR-1078 Right Edge	
	144-078 Flat Washer M4		144-105 Flat Washer M5	95	JR-1075 Lower Edge	
58	GP-1029X Coin Entry Bracket, A		144-149 Lock Washer, Ext. M5	96	177-011 Screw Nail, Thin H., Stainless 1.5x16	
59	GP-1072X Coin Entry Bracket, A	73	JR-1009 Caster Retainer Plate, B	97	81028 Sticker, Service Instruction	
	GP-1030X Coin Entry Bracket, B	74	122-094 Wood Screw, F.H. Phill. 3.1x16		81029 Sticker, Service Instruction, English	
	GP-1073 Coin Entry Bracket, B		75	S-81013 Caster, Rubber Wheel	98	JR-1007 Speaker Ornament
60	111-583 M. Screw, P.H. Phill., ISO M3x6		76	111-327 Hex. Bolt M8x30	99	JR-1076 Top Edge
	144-135 Lock Washer, Ext. M3		144-132 Spring Washer M8 (#2)	100	JR-1088 Ornament Panel Ass'y	
61	GP-1031 Coin Entry Base, A	77	SC-4015 Connector Bracket, 15P, AMP Type	101	133-089 Hex. Nut, ISO M4	
					144-078 Flat Washer M4	
					102	JR-1046 Timer Unit Ass'y (See Page 5 For Detail)
					103	111-665 M. Screw, P.H. Phill.,

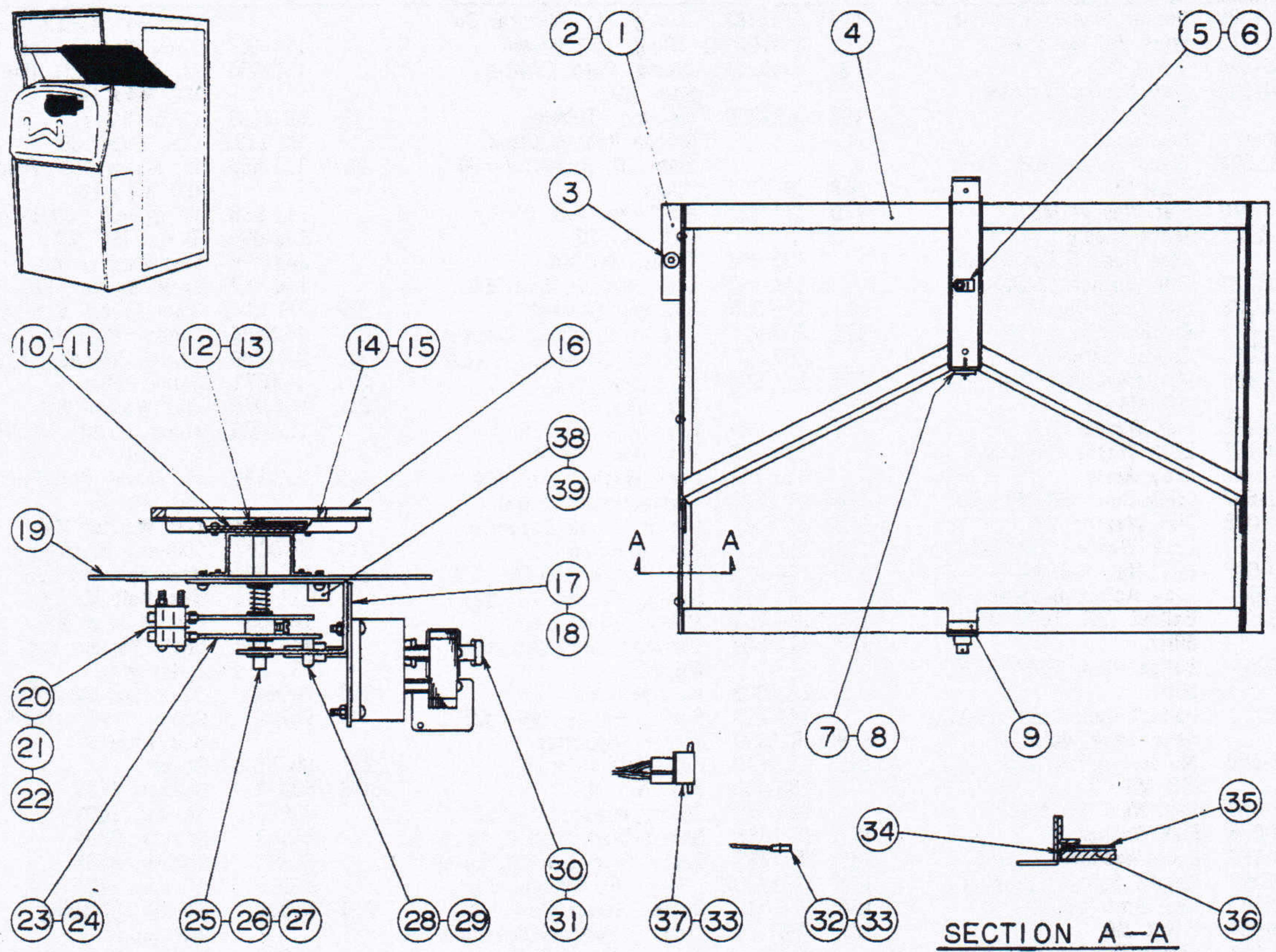
CONTINUE NEXT PAGE



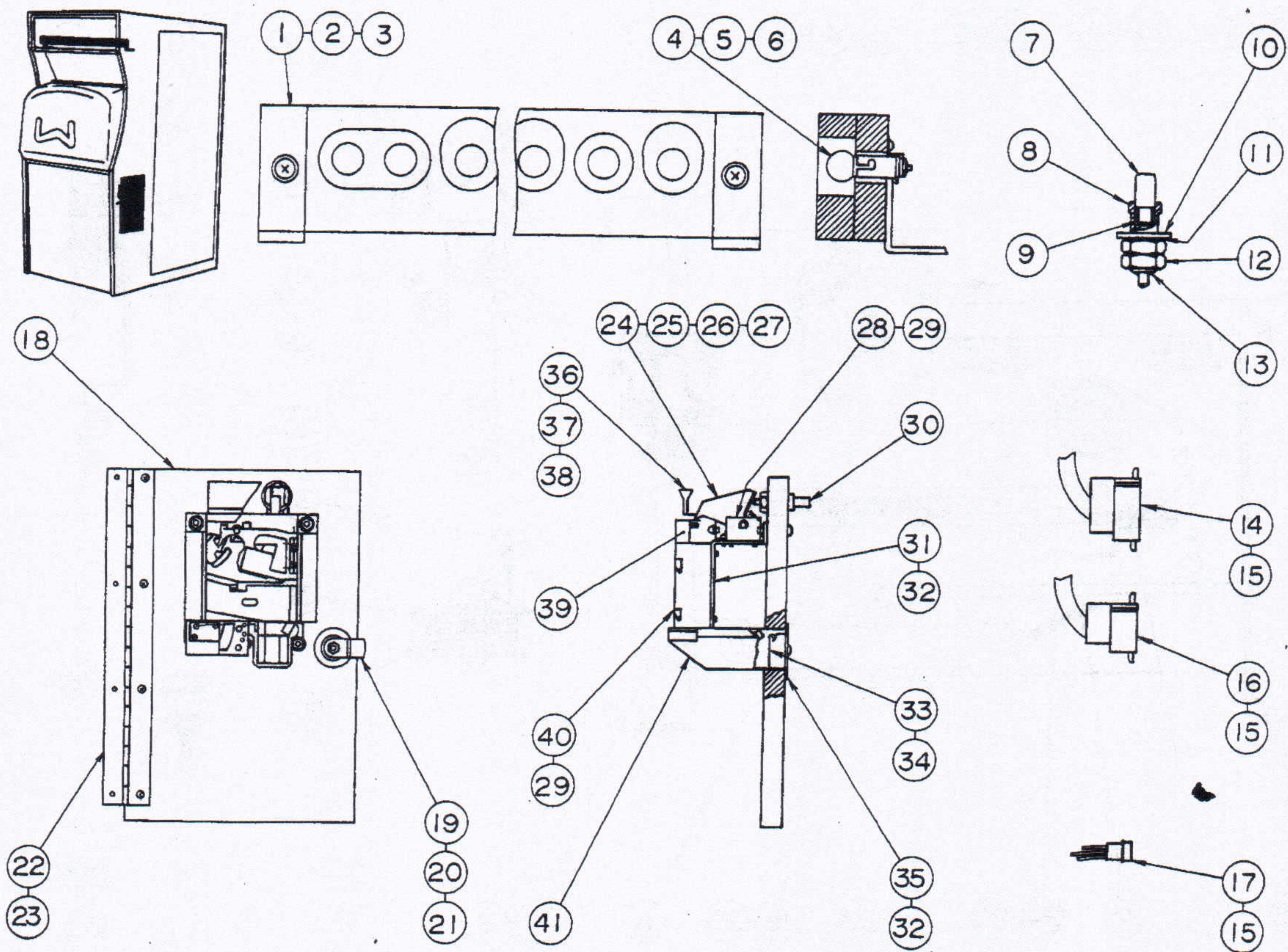
Item	Part No.	Description	Item	Part No.	Description	Item	Part No.	Description
		ISO M4×20	80824		Denomination Plate, 25¢			1/2 Pound
	111-659	M. Screw, P.H. Phill., ISO M4×16	80825		Denomination Plate, 50¢	81008		Denomination Plate, 50 Paisa
	133-096	T-Nut, ISO M4	80828		Denomination Plate, 1 Shilling×2	81055		Denomination Plate, ¥50
	144-078	Flat Washer M4	80831		Denomination Plate, 1 Franc	116	177-013	Parker Screw, Ni-Plating, 1.5×4.5
	144-167	Lock Washer, Ext. M4	80832		Denomination Plate, 5 Franc	117	GP-1027	Coin Entry Plate
104	JR-1069	Score Glass	80839		Denomination Plate, 1 Krona	GP-1071X		Coin Entry Plate
105	SC-1025	Window Sash, 188	80840		Denomination Plate, 50 Pennia	118	JR-1006	Instrument Panel
106	ML-1082	Instruction Ornament	80841		Denomination Plate, 50 Lira	119	133-090	Hex. Nut, ISO M5
107	ML-1081	Plastic Plate	80844		Denomination Plate, 25 Centavos	133-003		Hex. Nut M6
108	JR-1086	Replay Instruction Sheet	80845		Denomination Plate, 50 Pfennig	144-124		Flat Washer 6.5-19×1.2
	JR-1091	Replay Instruction Sheet, English	80853		Denomination Plate, w/o Denomi.	144-149		Lock Washer, Ext. M5
	JR-1092	Extended Play Instruction Sheet, English	80863		Denomination Plate, 100 Lira	144-115		Spring Washer M6 (#2)
109	111-778	M. Screw, T.H. Phill., Chromed, ISO M3×10	80865		Denomination Plate, 1 Mark	111-713		M. Screw, F.H. Phill., ISO M5×25
110	JR-1085	Play Instruction Plate	80866		Denomination Plate, 5d	122-125		Wood Screw, R.H. Phill., Chromed 3.1×16
	JR-1090	Play Instruction Plate, English	80878		Denomination Plate, 5 Shilling	144-024		Flat Washer, Special 5.6-19.1×1.2
111	111-615	Carriage Bolt, Chromed, Special, ISO M4×10	80879		Denomination Plate, 10 Franc	120	SD-1044	Locking Tongue
	133-089	Hex. Nut, ISO M4	80925		Denomination Plate, 20¢	121	80676	Sticker, Play Meter
	144-167	Lock Washer, Ext. M4	80947		Denomination Plate, 1\$	122	81020	Sticker, Service Light Switch
112	ML-1078	Switch Holder	80973		Denomination Plate, 1/4 Guilder	123	S-90250	Switch, AC
113	92003	Switch, Push Button Type	80980		Denomination Plate, 10 Krona×2	124	JR-1077	Left Edge
114	111-674	Set Screw, P.H. Special, ISO M4×5	80997		Denomination Plate,	125	JR-1004	Side Door Protector
115	80818	Denomination Plate, ¥20				126	JR-1003	Corner Protector
	80819	Denomination Plate, ¥30				127	JR-0004	Mechanism Guide Bracket
	80820	Denomination Plate, 5¢				128	111-677	Carriage Bolt, Chromed M6×35
	80821	Denomination Plate, 5¢×2					133-003	Hex. Nut M6
	80822	Denomination Plate, 10¢					144-140	Lock Washer, Ext. M6
	80823	Denomination Plate, 10¢×2						CONTINUE NEXT PAGE

Item	Part No.	Description	Item	Part No.	Description	Item	Part No.	Description	
129	SC-1070	Corner Protector, Front	164	S-91984-2	Plug, 15P, Natural Color			ISO M4 (H=1.6 B=8)	
130	111-773	Wing Bolt M6x40	165	S-91985-2	Plug, 15P, Brown		144-167	Lock Washer, Ext. M4	
	133-054	T-Nut M6	166	S-90181	Clamp, Cord, Plastic, 8mm I.D.		111-650	M. Screw, P.H. Phill., ISO M4x14	
	144-025	Flat Washer, Special 7.1-22.2x2	167	S-91879	Insulator Tubing, Silicon Rubber Glass, 9mm I.D. (Black) L=36	205	SB-1133	Cover Plate	
131	30060	Key Holder				206	ML-1101	Free Bush, 38	
132	122-004	Wood Screw, R.H. Phill. 3.5x16	169	JR-1037	Hinge	207	111-650	M. Screw, P.H. Phill., ISO M4x14	
	144-070	Flat Washer M3.5	170	111-665	M. Screw, P.H. Phill., ISO M4x20		111-658	Wing Bolt, ISO M4x14	
133	JR-1022	Mirror Ass'y (See Page 5 For Detail)		133-096	T-Nut, ISO M4		133-096	T-Nut, ISO M4	
134	144-125	Flat Washer 13-28.5x1		144-167	Lock Washer, Ext. M4		144-078	Flat Washer M4	
	144-228	Clip Ring, No. 7	171	JR-0003	Shipping Bracket, C	208	RM-1031	Main Switch Bracket	
	155-077	Cotter Pin 2.5x25	172	80726	Tag for Shipping Bracket	209	S-90834	Switch, Push Button Type	
135	JR-1040	Course Screen		80738X	Tag for Shipping, English	210	S-91649	Switch Stopper, 12φ	
136	111-596	M. Screw, P.H. Phill., ISO M4x8	173	111-598	M. Screw, P.H. Phill., ISO M4x12	211	JR-1071	Relay Cover	
	144-078	Flat Washer M4		111-094	Hex. Bolt M6x20	212	144-078	Flat Washer M4	
	144-167	Lock Washer, Ext. M4		133-089	Hex. Nut, ISO M4		122-075	Wood Screw, R.H. Phill. 4.1x16	
137	JR-1041	Stay Ass'y	174	JR-1060	Frame Holder, Front	213	111-596	M. Screw, P.H. Phill., ISO M4x8	
138	111-657	Wing Bolt, ISO M4x10	175	JR-1061	Mirror Frame Supporter		144-078	Flat Washer M4	
	144-078	Flat Washer M4	176	111-140	Hex. Bolt M6x12	214	JR-0002	Shipping Bracket, B	
	144-167	Lock Washer, Ext. M4		144-124	Flat Washer 6.5-19x1.2	215	111-098	Hex. Bolt M8x25	
	133-089	Hex. Nut, ISO M4		144-115	Spring Washer M6 (#2)		111-481	Hex. Bolt M8x65	
139	JR-1042	Stay Adjust Bracket	177	JR-1055	Mirror Frame Base		144-054	Flat Washer M8	
140	91001	Ballast Coil, 100V, 10W, 60Hz.	178	111-547	Carriage Bolt, Chromed M6x30		144-168	Lock Washer, Ext. M8	
	91000	Ballast Coil, 100V, 10W, 50Hz.		133-003	Hex. Nut M6		133-115	T-Nut M8	
	91812	Ballast Coil, 115V, 10W, Strip Type, 60Hz.		144-115	Spring Washer M6 (#2)	216	90998X	Cable and Plug Ass'y	
141	111-596	M. Screw, P.H. Phill., ISO M4x8	179	JR-1059	Frame Supporter		90747	Cable, 3 Wire Pre-Peeled, Heavy Duty	
	133-089	Hex. Nut, ISO M4	180	111-140	Hex. Bolt M6x12	217	SB-1136	Cover	
	144-078	Flat Washer M4		133-003	Hex. Nut M6	218	80679	Sticker, 110V	
	144-167	Lock Washer, Ext. M4		144-115	Spring Washer M6 (#2)		80666	Sticker, 200V	
142	JR-1067	Handle Support Bracket	181	JR-1063	Select Disc Bracket, Upper		80556	Sticker, 220V	
143	111-357	Hex. Bolt M6x25	182	JR-1062	Select Disc Bracket, Lower		80595	Sticker, 230V	
	133-054	T-Nut M6	183	S-91979-2	Plug, 3P, Natural Color		80309	Sticker, 240V	
	144-115	Spring Washer M6 (#2)	184	JR-1032	Course Select Disc Ass'y	219	81039	Sticker, Shipping Instruction	
144	S-91665	Bulb, 100V, 30W	185	80874	Sticker, Notice Instruction		81040	Sticker, Shipping Instruction, English	
145	S-90473	Lamp Socket, Standard Screw Base, Single, Table Type	186	S-92022-1	Socket, 1P, Free Hanging Type, Natural Color	220	81051X	Sticker "Patent Pending No. 095859"	
146	122-111	Wood Screw, F.H. Phill. 3.1x20	187	JR-1056	Frame, Left	221	80060	Name Plate, "Made In Japan"	
147	JR-1070	Tongue Retainer Plate	188	JR-1057	Frame, Right	222	80779	Sticker, "Export"	
148	JR-1035	Light Cover Holder, Right	189	111-702	Wing Bolt, ISO M5x10	223	122-004	Wood Screw, R.H. Phill. 3.5x16	
149	JR-1036	Light Cover Holder, Left		144-105	Flat Washer M5		144-078	Flat Washer M4	
150	SC-1035	Speaker Guard Plate	190	JR-1058	Frame Holder, Rear		177-011	Screw Nail, Thin H. Stainless 1.5x16	
151	177-011	Screw Nail, Thin H., Stainless 1.5x16	191	111-679	M. Screw, P.H. Phill. M6x12		224	S-91879	Insulator Tubing, Silicon Rubber Glass, 9mm I.D. (Black) L=40
152	S-92036	Speaker, 30cm, 8 Ohm		144-115	Spring Washer M6 (#2)	225	90303X-50	Magnet Counter, 5 Digits, 50V	
153	S-90902-2	Pin Plug for Pin Jack	192	JR-1033	Lamp Box Holder, R.H. Upper	226	JR-1094	Screen, Jet Bomber, Left	
154	133-096	T-Nut, ISO M4	193	JR-1034	Lamp Box Holder, L.H. Upper	227	JR-1095	Screen, Jet Bomber, Right	
	144-078	Flat Washer M4	194	JR-1038	Light Cover, Upper	228	S-80030	Staple	
	144-167	Lock Washer, Ext. M4	195	JR-1039	Light Cover, Lower	229	122-080	Wood Screw, R.H. Phill. 3.1x16	
	111-673	M. Screw, P.H. Phill., ISO M4x25	196	JR-1043	Mechanism Guide Base		122-094	Wood Screw, F.H. Phill. 3.1x16	
155	JB-2061	Paper Insulator	197	133-097	T-Nut, ISO M5				
156	111-587	M. Screw, P.H. Phill., ISO M3x16		144-149	Lock Washer, Ext. M5				
	133-088	Hex. Nut, ISO M3		111-660	M. Screw, P.H. Phill., ISO M5x16				
	144-135	Lock Washer, Ext. M3	198	80900	Name Plate, Electrical Specification				
157	JR-1015	Lamp Box Holder		80027X	Name Plate, Electrical Specs. & Serial No. SEGA 1000				
158	JR-1018	Lamp Box Holder, R.H. Lower	199	177-011	Screw Nail, Thin H., Stainless 1.5x16				
159	JR-1019	Lamp Box Holder, L.H. Lower	200	JR-1044	Mechanism Guide Plate				
160	111-601	M. Screw, P.H. Phill., ISO M5x8	201	111-601	M. Screw, P.H. Phill., ISO M5x8				
	144-105	Flat Washer M5		144-149	Lock Washer, Ext. M5				
	144-149	Lock Washer, Ext. M5	202	PS-2049Y	Paper Insulator				
161	JR-1020	Fire Line Plate	203	S-92035	Fluorescent Black Light, 10W				
162	JR-1021	Course Lamp Box	204	133-104	Square Nut,				
163	91227	Lamp Socket w/Clamp							

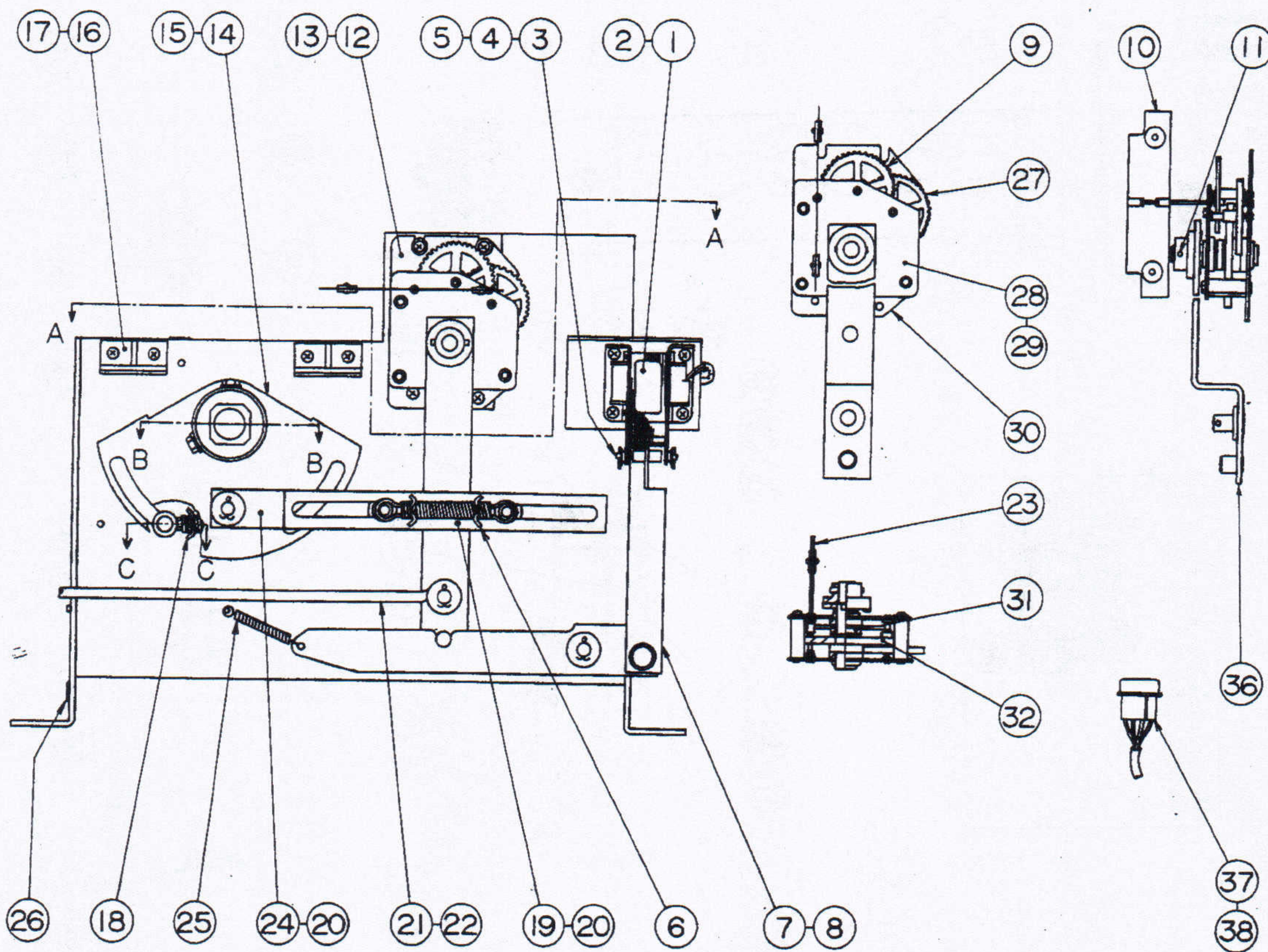
Johns Jukes Ltd.
 2343 Main Street
 Vancouver, BC
 V5T 3C9



Item	Part No.	Description	Item	Part No.	Description	Item	Part No.	Description
1	JR-1024	Frame Side Plate	19	GP-4107	Bracket	39	111-659	6mm I.D. M. Screw, P.H. Phill., ISO M4×16
2	111-596	M. Screw, P.H. Phill., ISO M4×8	20	PS-2049Y	Paper Insulator	144-078	144-078	Flat Washer M4
3	144-167	Lock Washer, Ext. M4	21	S-91834	Switch, Micro Type	144-167	144-167	Lock Washer, Ext. M4
3	S-91457	Rubber Grommet, 6φ×12φ×18	22	111-671	M. Screw, P.H. Phill., ISO M3×30			
4	JR-1023	Mirror Frame Ass'y		133-088	Hex. Nut, ISO M3			
5	S-90591	Clamp, Cord, Plastic, 5mm I.D.		144-096	Flat Washer, Small Type M3			
6	111-596	M. Screw, P.H. Phill., ISO M4×8		144-135	Lock Washer, Ext. M3			
7	JR-1025	Contact Arm Ass'y		144-057	Flat Washer M3			
8	111-597	M. Screw, P.H. Phill., ISO M4×10	23	GP-4109	Timer Disc			
	144-078	Flat Washer M4	24	111-709	Set Screw, C.H., Special, ISO M4×10			
	144-167	Lock Washer, Ext. M4	25	GP-4111	Indicator Shaft			
9	JR-1029	Sash 603	26	GP-4110	Bushing			
10	JR-1048	Indicator Plate	27	GP-4115	Compression Spring			
11	111-771	M. Screw, T.H. Phill., Chromed, ISO M3×6	28	GP-4114	Drive Wheel			
12	JR-1087	Hand	29	111-757	Set Screw, Hex. Socket, Cup Point, ISO M4×4			
13	111-756	M. Screw, Oval H. Phill., Chromed, ISO M3×14	30	92027	Motor, AC100V, 50-60Hz, 1.8-2.1rpm			
14	JR-1047	Indicator Bracket	31	111-659	M. Screw, P.H. Phill., ISO M4×16			
15	111-584	M. Screw, P.H. Phill., ISO M3×8		144-078	Flat Washer M4			
	144-135	Lock Washer, Ext. M3		144-167	Lock Washer, Ext. M4			
	144-057	Flat Washer M3		133-089	Hex. Nut, ISO M4			
16	JR-1083	Rubber Spacer	32	S-92022-2	Plug, 1P, Free Hanging Type, Natural Color			
17	GP-4108	Timer Motor Bracket	33	S-91978-2	Pin Element			
18	111-596	M. Screw, P.H. Phill., ISO M4×8	34	JR-1028	Sash, 433			
	144-078	Flat Washer M4	35	JR-1027	Mirror Protector			
			36	JR-1026	Mirror			
			37	S-92011-2	Plug, 6P, Natural Color			
			38	S-90755	Clamp, Cord, Plastic,			

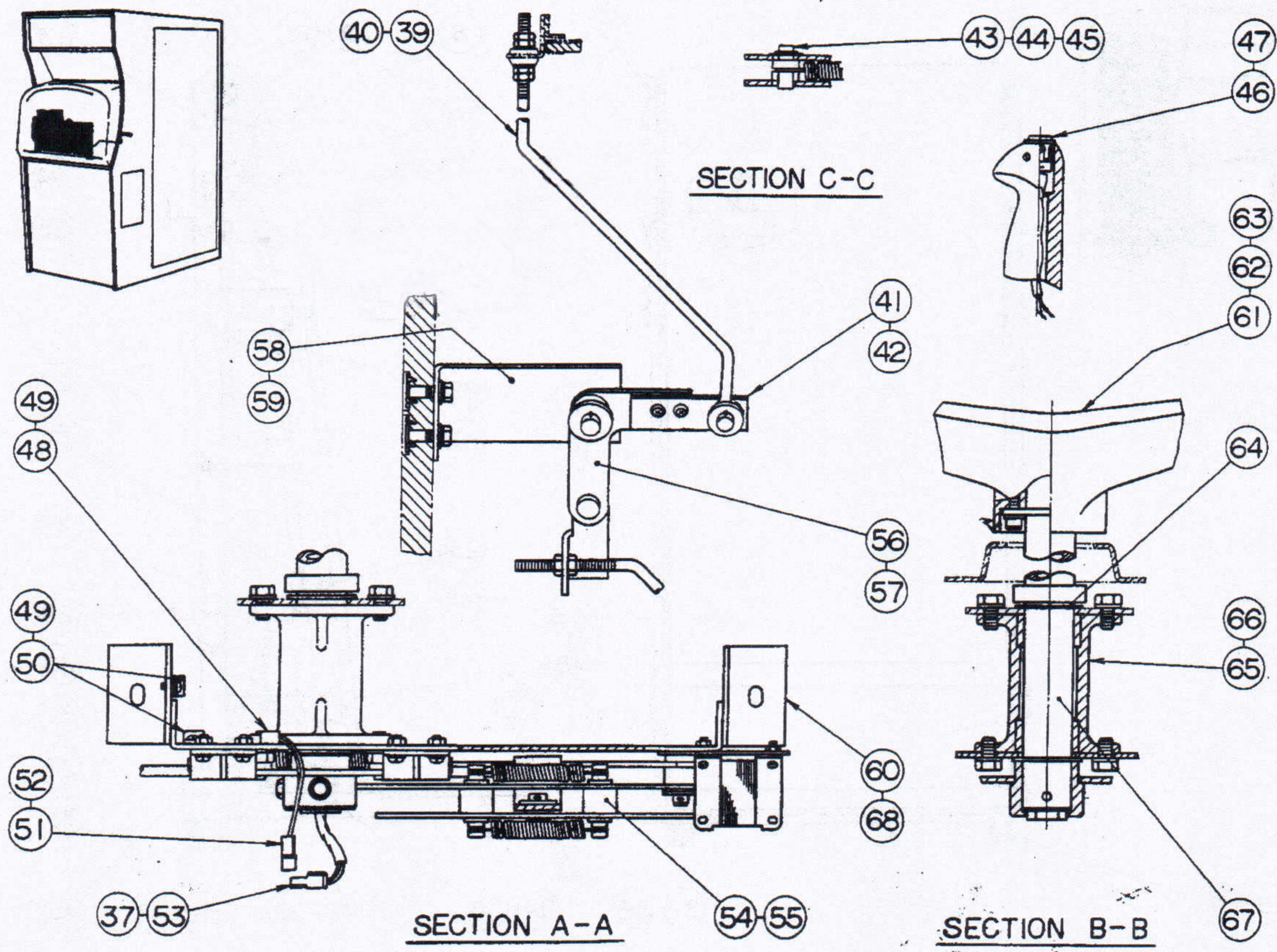


Item	Part No.	Description	Item	Part No.	Description	Item	Part No.	Description		
1	JR-1082	Score Board	27	144-172	E Washer 3					
2	JR-1081	Score Board Bracket	28	JR-1053	Reject Bracket		CC-2038	Coin Chute, Rejector Type, 6d×1		
3	111-712	M. Screw, P.H. Phill., ISO M5×20	29	111-595	M. Screw, P.H. Phill., ISO M4×6		40	CC-2050	Coin Chute Bracket, Separator Type, New 50 Yen ×1	
4	144-105	Flat Washer M5	30	144-167	Lock Washer, Ext. M4			CC-2061	Coin Chute Bracket Ass'y, Light Coin Type	
5	S-90158	Bulb, 6V #55	31	DD-1015	Reject Button Ass'y (See detail)			CC-2069	Coin Chute Bracket Ass'y, Large Coin Type	
6	90725X	Lamp Socket	32	JR-1051	Coin Chute Base Bracket			41	JR-1052	Reject Chute
7	122-064	Wood Screw, R.H. Phill. 3.1×13	33	111-662	Carriage Bolt, Chromed, ISO M5×28					
8	RM-1011	Push Button	34	133-090	Hex. Nut, ISO M5					
9	SH-1056	Button Housing	35	144-149	Lock Washer, Ext. M5					
10	LS-3012	Compression Spring, Rejection Button	36	GF-1012	Flap Door					
11	144-086	Flat Washer M12	37	SB-1131-J	Door Shaft					
12	144-182	Lock Washer, Ext. M12	38	GF-1011	Reject Chute Plate					
13	133-085	Hex. Nut M12 (#3) P=1	39	GP-1025X	Upper Coin Chute					
14	155-024	Spring Pin, 1.5×8	40	JR-1089	Upper Chute Bracket					
15	S-91980-2	Plug, 12P, Natural Color	41	111-595	M. Screw, P.H. Phill., ISO M4×6					
16	S-91978-2	Pin Element		144-167	Lock Washer, Ext. M4					
17	S-92007-2	Plug, 9P, Red		144-078	Flat Washer M4					
18	S-91979-2	Plug, 3P, Natural Color		CC-2001	Coin Chute Rejector Type, 10 yen×1					
19	JR-1050	Coin Chute Door		CC-0006	Coin Chute, Rejector Type, 25¢×1					
20	SH-1012	Locking Tongue		CC-2005	Coin Chute, Rejector Type, 10¢×1					
21	LS-1064	Ace Cylinder Lock, L.S. Type		CC-2053	Coin Chute, Rejector Type, Australia 20¢×1					
22	SGJ-1096-3	Lock Retainer Plate		CC-2016	Coin Chute, Rejector Type, 1d×1					
23	GP-1022	Hinge, Front Door		CC-2006	Coin Chute, Rejector Type, 25¢×1					
	122-080	Wood Screw, R.H. Phill. 3.1×16		CC-2008	Coin Chute, Rejector					
	122-094	Wood Screw, F.H. Phill. 3.1×16								
24	JR-1054	Reject Lever								
25	AF-2307	Extension Spring								
26	SH-1007	Shaft								



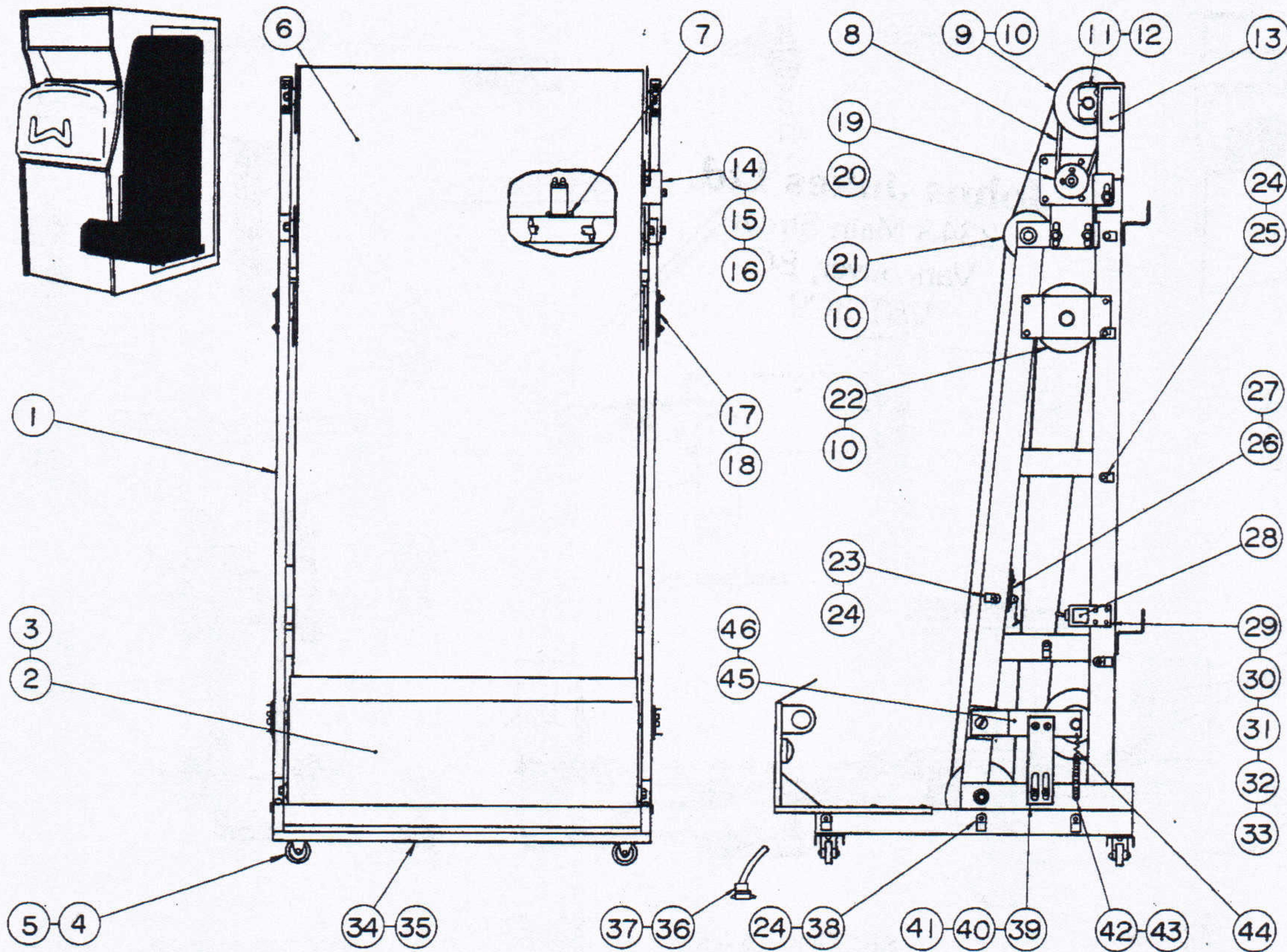
Item	Part No.	Description	Item	Part No.	Description	Item	Part No.	Description
1	S-91976	Solenoid, 100V, 1.5Kg	155-065	Cotter Pin 2×15	41	JR-2025	Elastic Plate	
2	111-598	M. Screw, P.H. Phill., ISO M4×12	144-004	Flat Washer, Special 10.3-15.9×0.1	42	111-602	M. Screw, P.H. Phill., ISO M5×10	
	133-089	Hex. Nut, ISO M4	144-230	Flat Washer, Special 9.2-20×1.6		144-105	Flat Washer M5	
	144-095	Flat Washer, Small Type M4	21	JR-2017	Connecting Rod, Short	144-090	Spring Washer M5 (#2)	
	144-167	Lock Washer, Ext. M4	22	133-003	Hex. Nut M6	43	JR-2016	Spring Prop, #1
3	DM-2015	Spacer Tube		144-068	Flat Washer M10	44	JR-2023	Collar
4	RM-2048	Plunger Pin		155-065	Cotter Pin 2×15	45	144-083	E Washer 7
5	144-078	Flat Washer M4		144-004	Flat Washer, Special 10.3-15.9×0.1		144-004	Flat Washer, Special 10.3-15.9×0.1
	155-081	Cotter Pin 1.6×8	23	9J-212	Clock Fan Shaft		144-230	Flat Washer, Special 9.2-20×0.8
6	JR-2027	Extension Spring	24	JR-2019	Handle Link	46	92003	Switch, Push Button Type
7	JR-2004	Lock Lever Unit	25	JR-2022	Extension Spring	47	111-776	Set Screw, Hex. Socket, Cup Point, ISO M4×8
8	144-068	Flat Washer M10	26	S-91807	Rubber Grommet 9φ×12φ×6	48	S-90591	Clamp, Cord, Plastic, 5mm I.D.
	155-065	Cotter Pin 2×15	27	9C-7574	Clock Idler Gear	49	111-596	M. Screw, P.H. Phill., ISO M4×8
9	9D-1298	Clock Fan Gear	28	JR-2012	Top Clock Plate		144-078	Flat Washer M4
10	9B-3299	Clock Fan	29	111-584	M. Screw, P.H. Phill., ISO M3×8	50	S-90755	Clamp, Cord, Plastic, 6mm I.D.
11	155-089	Spring Pin 3×20		144-135	Lock Washer, Ext. M3	51	S-91978-1	Socket Element
12	JR-2010	Clock Ass'y (See Detail)	30	JR-2011	Bottom Clock Plate	52	S-92021-1	Socket, 2P, Free Hanging Type, Natural Color
13	111-598	M. Screw, P.H. Phill., ISO M4×12	31	JR-2015	Collar	53	S-92021-2	Plug, 2P, Free Hanging Type, Natural Color
	133-089	Hex. Nut, ISO M4	32	JR-2013	Large Clock Gear	54	JR-2020	Spring Prop, #2
	144-078	Flat Washer M4	36	JR-2014	Clock Arm	55	144-107	Flat Washer, Special 9.5-14.3×0.8
	144-167	Lock Washer, Ext. M4	37	S-91978-2	Pin Element		144-083	E Washer 7
14	JR-2009	Handle Arm	38	S-92018-2	Plug, 4P, Natural Color		144-004	Flat Washer, Special 10.3-15.9×0.1
15	111-165	Hex. Bolt M6×16	39	JR-2003	Connecting Rod, Long			
	144-115	Spring Washer M6 (#2)	40	133-042	Hex. Nut M6 (#3)			
16	JR-2006	Handle Stopper		144-053	Flat Washer M6			
17	111-603	M. Screw, P.H. Phill., ISO M5×12		144-068	Flat Washer M10			
	133-090	Hex. Nut, ISO M5		155-065	Cotter Pin 2×15			
	144-149	Lock Washer, Ext. M5		144-004	Flat Washer, Special 10.3-15.9×0.1			
8	JR-2021	Extension Spring						
9	JR-2018	Clock Link						
10	144-068	Flat Washer M10						

CONTINUE NEXT PAGE

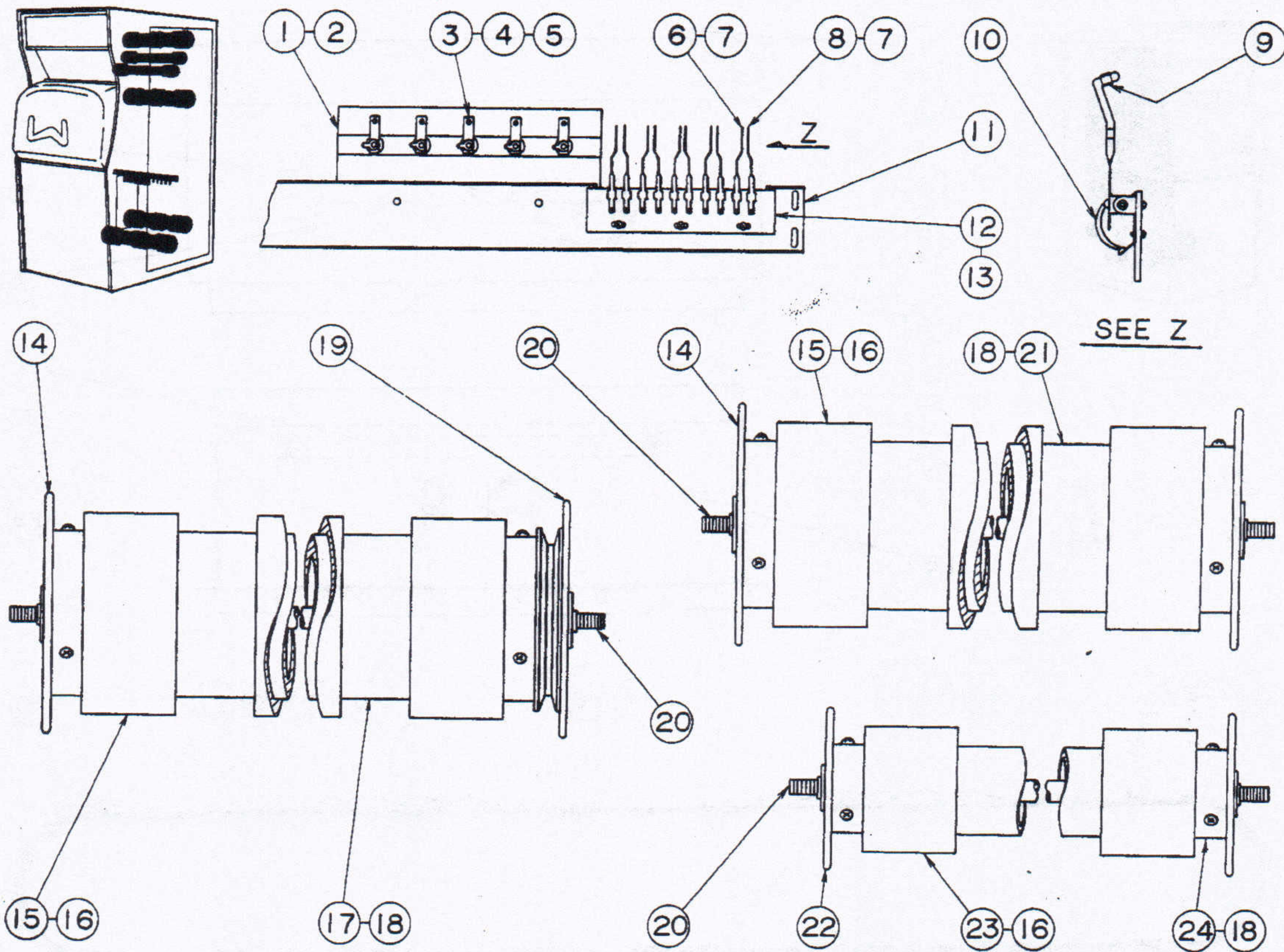


Item	Part No.	Description
56	JR-2024	Shift Connector
57	144-086	Flat Washer M12
	155-077	Cotter Pin 2.5×25
	144-205	Flat Washer, Special 12.2-22×0.5
	144-001	Flat Washer, Special 13.5-22.2×0.23
58	JR-2026	Shift Connector Bracket
59	111-094	Hex. Bolt M6×20
	144-053	Flat Washer M6
	144-115	Spring Washer M6 (2)
	133-054	T-Nut M6
60	JR-2005	Handle Bracket Ass'y
61	JR-2001	Control Handle
62	JR-2028	Wire Protector
63	122-139	FT-Screw, P.H. Phill., ISO M4×8
	111-741	Set Screw, Hex. Socket H., Cap Screw M6×20
	144-115	Spring Washer M6 (2)
64	JR-2007	Thrust Washer
65	JR-2008	Housing
66	111-139	Hex. Bolt M8×14
	144-132	Spring Washer M8 (2)
67	JR-2002	Handle Shaft
68	144-068	Flat Washer M10
	144-004	Flat Washer, Special 10.3-15.9×0.1
	155-065	Cotter Pin 2×15
	133-054	T-Nut M6
	111-442	Carriage Bolt M8×140 S=50
	144-231	Flat Washer, Special 9.35×1.6

Item	Part No.	Description
	133-004	Hex. Nut M8

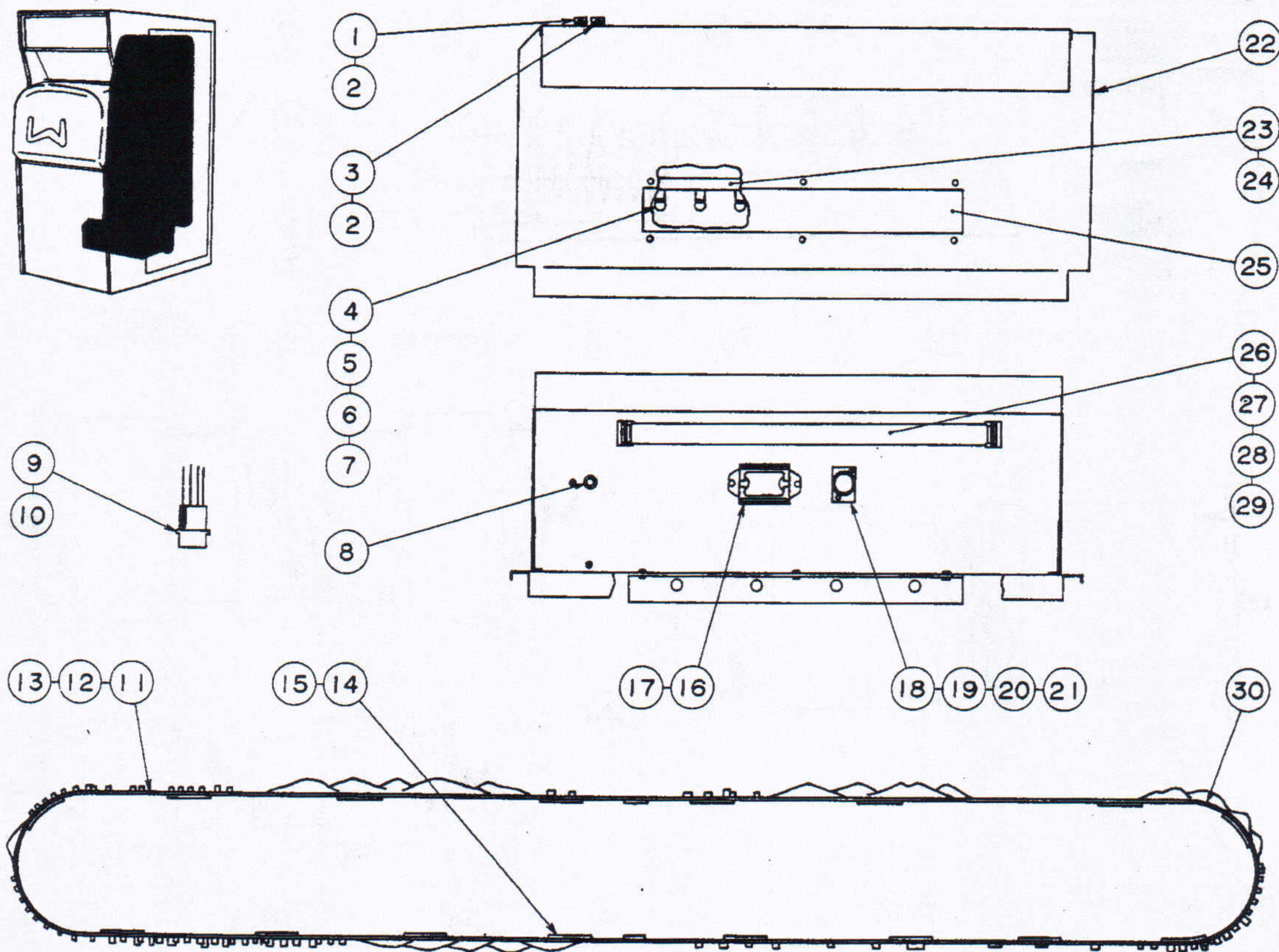


Item	Part No.	Description	Item	Part No.	Description	Item	Part No.	Description		
1	JR-3001	Mechanism Chassis	144-054	Flat Washer M8	31	S-91848	Switch Indicator, On-Off, 12.3φ, 30×17			
2	JR-3025	Back Screen Ass'y (See Page 11 For Detail)	144-132	Spring Washer M8 (#2)	32	S-91649	Switch Stopper, -12φ			
3	111-595	M. Screw, P.H. Phill., ISO M4×6	17	JR-3021	Roller Bracket, Middle	33	111-583	M. Screw, P.H. Phill., ISO M3×6		
	144-095	Flat Washer, Small Type M4	18	111-596	M. Screw, P.H. Phill., ISO M4×8		144-135	Lock Washer, Ext. M3		
4	S-80999	Caster, Nylon Wheel	144-078	Flat Washer M4	34	JR-3024	Caster Bracket			
5	111-596	M. Screw, P.H. Phill., ISO M4×8	144-167	Lock Washer, Ext. M4	35	111-596	M. Screw, P.H. Phill., ISO M4×8			
	144-076	Spring Washer M4 (#2)	111-597	M. Screw, P.H. Phill., ISO M4×10		144-078	Flat Washer M4			
6	JR-3015	Screen Belt Ass'y (See Page 11 For Detail)	19	JR-3018	Motor Pulley (50Hz)		144-167	Lock Washer, Ext. M4		
7	111-583	M. Screw, P.H. Phill., ISO M3×6	20	JR-3019	Motor Pulley (60Hz)	36	S-91958-2	Plug, 15P, Red		
	144-057	Flat Washer M3	21	111-775	Set Screw, C.H., Special, ISO M5×10	37	S-91978-2	Pin Element		
8	S-81000	V-Belt, M22	22	JR-3010	Roller Ass'y (See Page 10 For Detail)	38	S-90410	Clamp, Cord, Plastic, 10mm I.D.		
9	JR-3002	Drive Roller Ass'y (See Page 10 For Detail)	23	JR-3008	Roller Ass'y (See Page 10 For Detail)	39	JR-0001	Shipping Bracket, A		
10	133-004	Hex. Nut M8	24	S-90181	Clamp, Cord, Plastic, 8mm I.D.	40	80726	Tag For Shipping Bracket		
	144-054	Flat Washer M8	25	111-596	M. Screw, P.H. Phill., ISO M4×8	40	80738X	Tag For Shipping, English		
	144-132	Spring Washer M8 (#2)		144-078	Flat Washer M4	41	111-596	M. Screw, P.H. Phill., ISO M4×8		
11	JR-3020	Roller Bracket, Upper		144-078	Flat Washer M4		144-078	Flat Washer M4		
12	111-596	M. Screw, P.H. Phill., ISO M4×8		144-167	Lock Washer, Ext. M4		144-167	Lock Washer, Ext. M4		
	144-078	Flat Washer M4		S-90591	Clamp, Cord, Plastic, 5mm I.D.		JR-3029	Spring Adjust Bracket		
	144-076	Spring Washer M4 (#2)		JR-3030	Switch & Clamp Ass'y (See Page 10 For Detail)		43	144-167	Lock Washer, Ext. M4	
13	81036	Sticker, Notice Instruction		111-596	M. Screw, P.H. Phill., ISO M4×8		111-596	M. Screw, P.H. Phill., ISO M4×6		
	31037	Sticker, Notice Instruction, English		144-167	Lock Washer, Ext. M4		44	RM-2051	Extension Spring	
				144-177	Flat Washer, Special 4.5-12.7×1.2		45	JR-3022	Roller Bracket, Lower	
4	JR-3017	Motor Bracket		28	81038	Sticker, Motor Service Switch		46	JR-3023	Shoulder Screw
5	91966	Motor, AC100V, 50-60Hz, 14-17rpm		29	JR-3040	Switch Bracket				
6	111-353	Hex. Bolt M8×16		30	S-90503	Switch, Toggle				



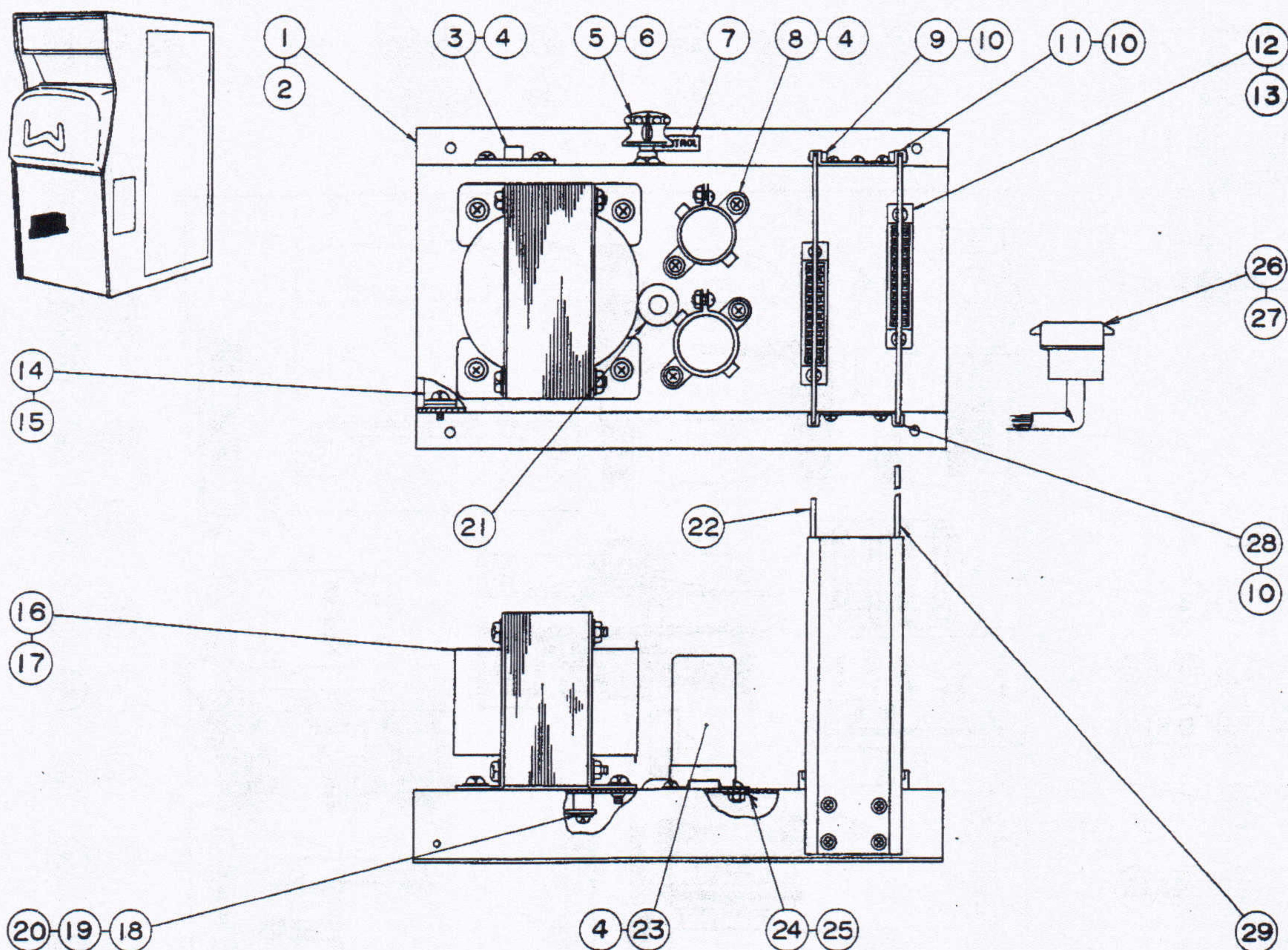
Item	Part No.	Description
1	JR-3039	Lamp Cover
2	111-618	M. Screw, P.H. Phill., ISO M5×25
	144-078	Flat Washer M5
3	91801	Lamp Socket
4	S-90156	Bulb, 6-8V #81
5	122-080	Wood Screw, R.H. Phill. 3:1×16
6	JR-3034	Contact Arm Unit, A
7	111-584	M. Screw, P.H. Phill., ISO M3×8
	144-057	Flat Washer M3
	144-135	Lock Washer, Ext. M3
8	JR-3035	Contact Arm Unit, B
9	S-91521	Thermo-Shrink Tube, l=8
10	S-91873	Cable, Vinyl, Single, Flexible, 36 Str. O.D. 3mm, l=70
11	JR-3031	Lamp Bracket
12	JR-3033	Contact Base
13	111-596	M. Screw, P.H. Phill., ISO M4×8
	144-078	Flat Washer M4
	144-167	Lock Washer, Ext. M4
14	JR-3004	Roller Wheel Casting, w/Bearing
15	JR-3007	Belt Cushion
16	244-050	Glue
17	JR-3006	Roller Wheel
18	111-598	M. Screw, P.H. Phill., ISO M4×12
	144-167	Lock Washer, Ext. M4
19	JR-3003	Roller Drive Pulley, w/Bearing
20	JR-3005	Roller Shaft

Item	Part No.	Description
21	JR-3009	Roller Wheel
22	JR-3011	Roller Wheel Casting, w/Bearing
23	JR-3014	Belt Cushion
24	JR-3013	Roller Wheel



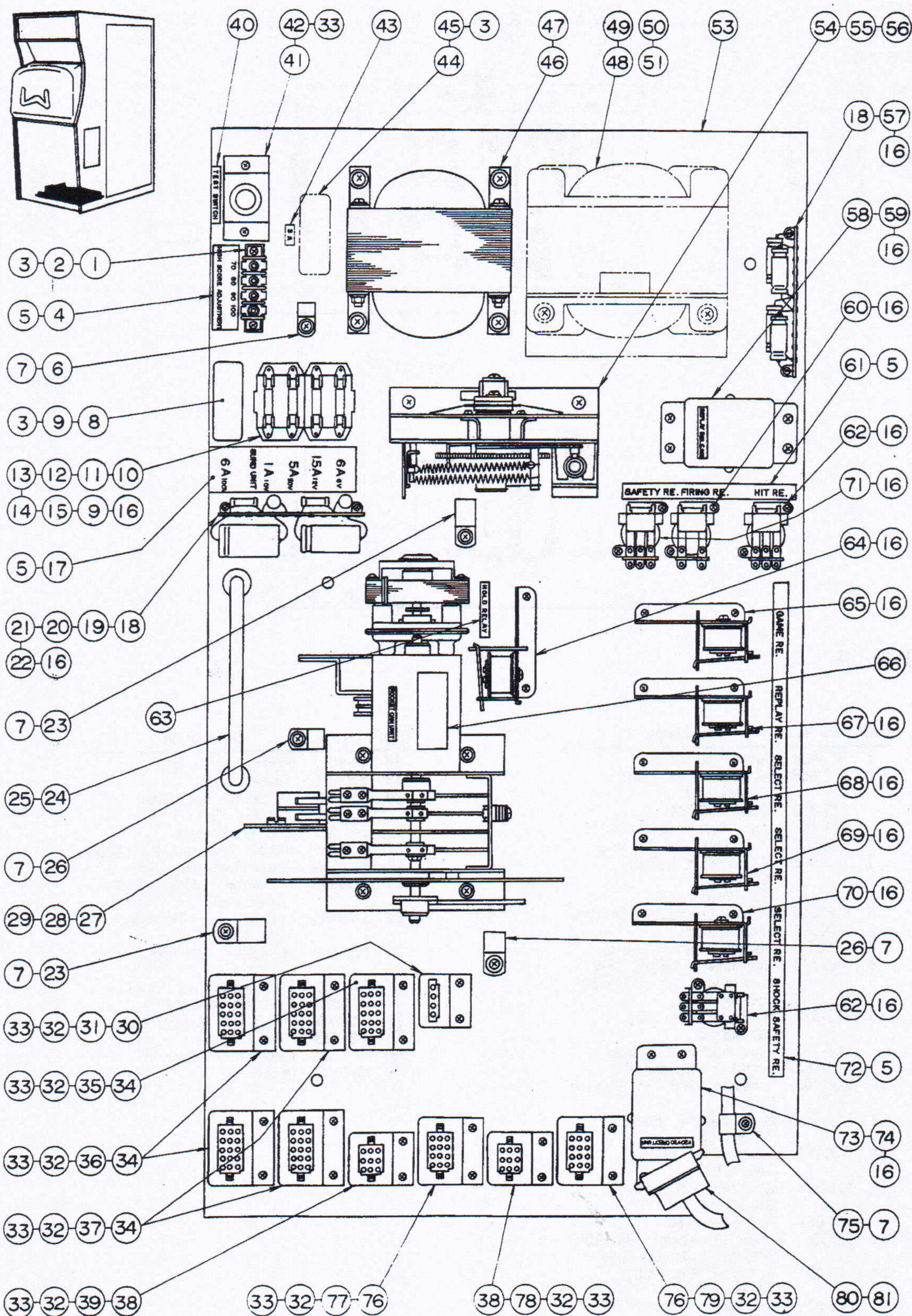
Item	Part No.	Description
1	S-90755	Clamp, Cord, Plastic, 6mm I.D.
2	111-596	M. Screw, P.H. Phill., ISO M4×8
	144-078	Flat Washer M4
3	S-90591	Clamp, Cord, Plastic, 5mm I.D.
4	90725X	Lamp Socket
5	S-90158	Bulb, 6V #55
6	S-91879	Insulator Tubing, Silicon Rubber Glass, 9mm I.D. (Black) l=20
7	111-582	M. Screw, P.H. Phill., ISO M3×5
	144-135	Lock Washer, Ext. M3
8	S-91457	Rubber Grommet, 6φ×12φ×18
9	S-92018-2	Plug, 4P, Natural Color
10	S-91978-2	Pin Element
11	JR-3015-A	Screen Belt, A
12	S-81027	Polyester Tape, 0.025mm×40mm×10m/roll
13	244-067	Glue
14	JR-3016	Contact Net
15	244-050	Glue
16	S-90173	Ballast Coil, 100V, 15W
	91639	Ballast Coil, 115V, 15W, Strip Type, 60Hz
17	111-596	M. Screw, P.H. Phill., ISO M4×8
	144-167	Lock Washer, Ext. M4
	133-089	Hex. Nut, ISO M4
	144-078	Flat Washer M4
18	JB-2061	Paper Insulator

Item	Part No.	Description
19	S-90244	Starter, Fluorescent Bayonet Type, FG-1P
20	S-90264	Socket, Fluorescent, Starter, Bayonet Type
21	111-632	M. Screw, P.H. Phill., M3.5×14
22	JR-3028	Screen Panel
23	JR-3027	Lamp Box
24	111-584	M. Screw, P.H. Phill., ISO M3×8
25	JR-3026	Mission Completed Plate
26	PS-2049Y	Paper Insulator
27	S-90260	Socket, Fluorescent Light, Spring Type
28	S-91058	Fluorescent Black Light, 15W
29	111-650	M. Screw, P.H. Phill., ISO M4×14
	133-104	Square Nut, ISO M4 (H=1.6 B=8)
30	JR-3015-B	Screen Belt, B

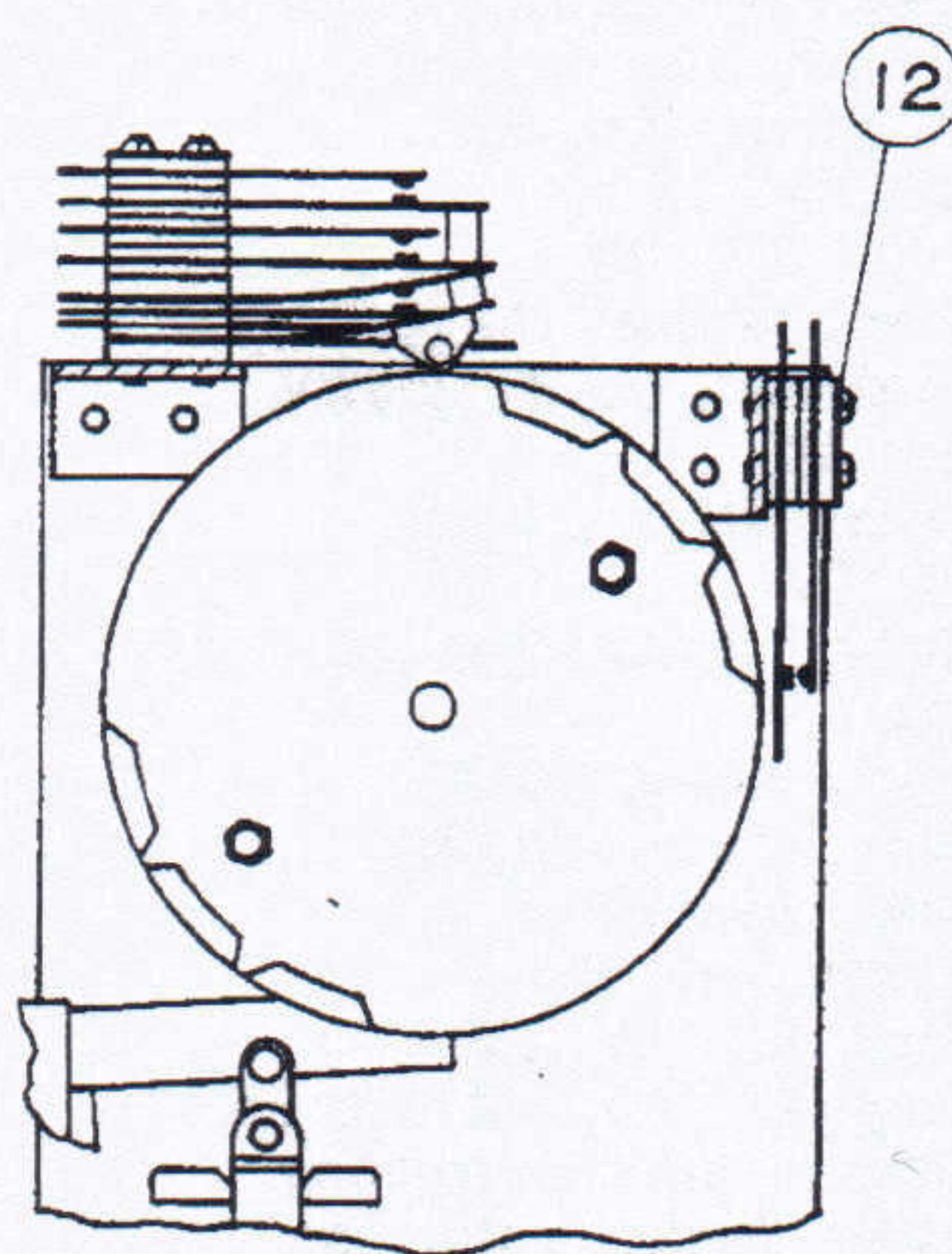
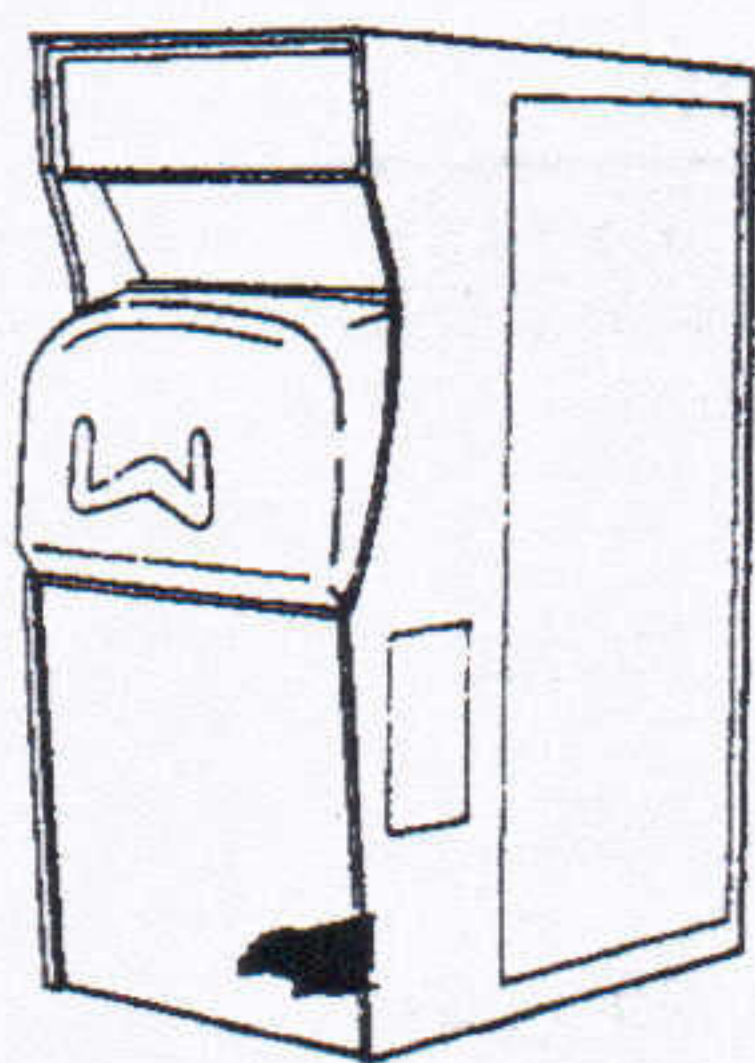


Item	Part No.	Description
1	JR-4008	Sound Unit Chassis
2	111-665	M. Screw, P.H. Phill., ISO M4×20
	133-096	T-Nut, ISO M4
	144-167	Lock Washer, Ext. M4
3	S-90902-1	Pin Jack, For Pin Plug
4	111-582	M. Screw, P.H. Phill., ISO M3×5
	144-057	Flat Washer M3
5	S-92019	Volume Control, A-30K Ohm
6	S-90595	Knob, 22mm
7	80634	Sticker, Volume Control
8	S-91793	Condenser, 1000μF, 16WV, Electrolytic Can (22φ×32)
9	ML-0010	Locking Spring
10	111-582	M. Screw, P.H. Phill., ISO M3×5
	144-135	Lock Washer, Ext. M3
11	ML-0009	Amplifier Retainer, B
12	S-91795	Connector, 10P, For Printed Circuit
13	111-584	M. Screw, P.H. Phill., ISO M3×8
14	S-90181	Clamp, Cord, Plastic, 8mm I.D.
15	111-584	M. Screw, P.H. Phill., ISO M3×8
	144-057	Flat Washer M3
16	92016	Power Transformer, 90-110V, 17V, 0.15A, 22-34V 1.5A
17	111-596	M. Screw, P.H. Phill., ISO M4×8
	144-078	Flat Washer M4
	144-167	Lock Washer, Ext. M4

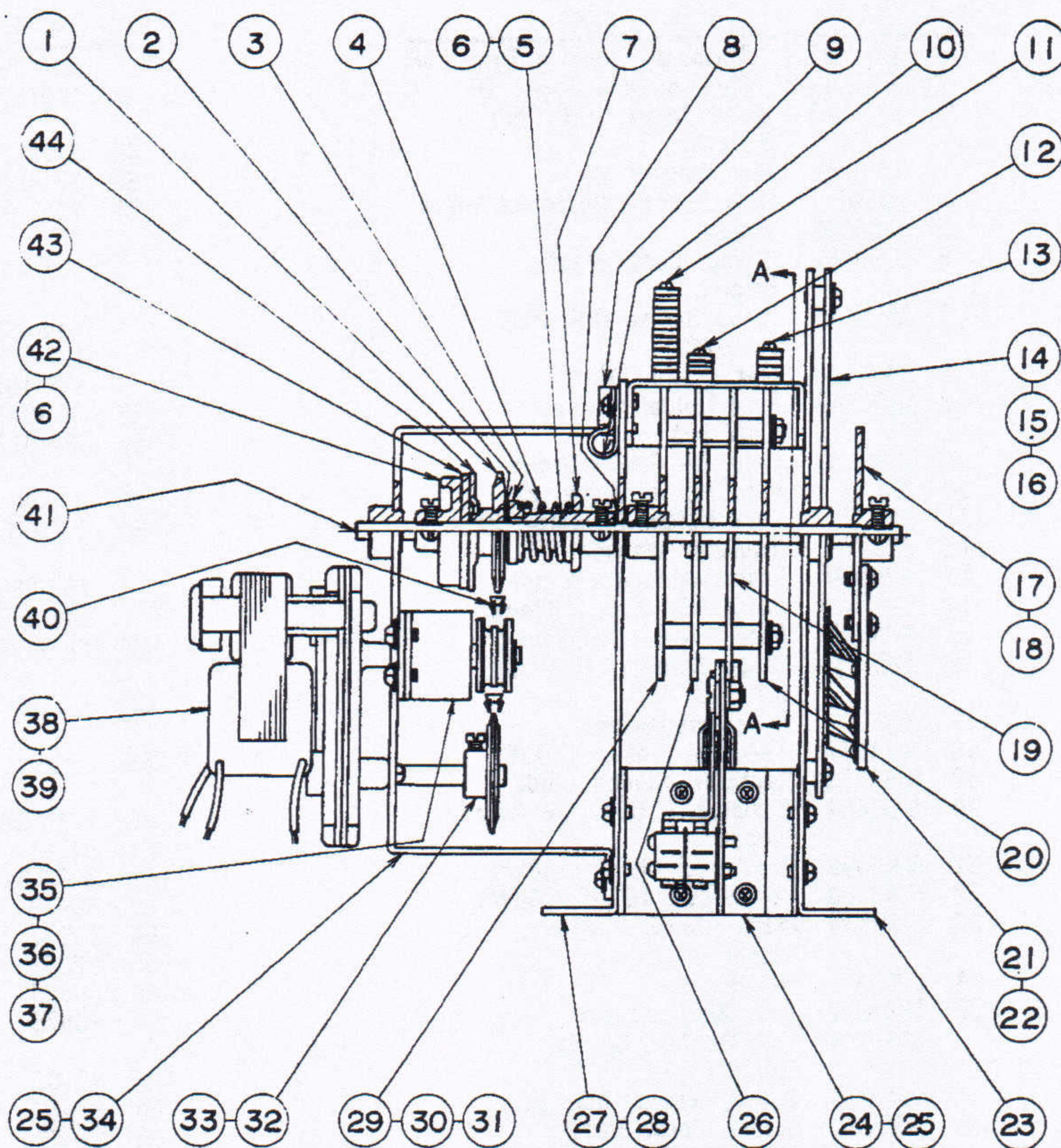
Item	Part No.	Description
18	JR-4011	Power Source Unit
19	RM-3019	Spacer Tube
20	111-586	M. Screw, P.H. Phill., ISO M3×12
	144-057	Flat Washer M3
21	S-91289	Rubber Grommet, 9φ×12φ
22	JR-4009	Power Amplifier, 15W
23	S-90948	Condenser, 1000μF, 50WV (25.4φ×50)
24	S-90465	Terminal Lug, Tie Point Type 13×0.4
25	111-584	M. Screw, P.H. Phill., ISO M3×8
	144-057	Flat Washer M3
	133-088	Hex. Nut, ISO M3
26	S-92006-2	Plug, 9P, Natural Color
27	S-91978-2	Pin Element
28	ML-0008	Amplifier Retainer, A
29	JR-4010	Oscillator



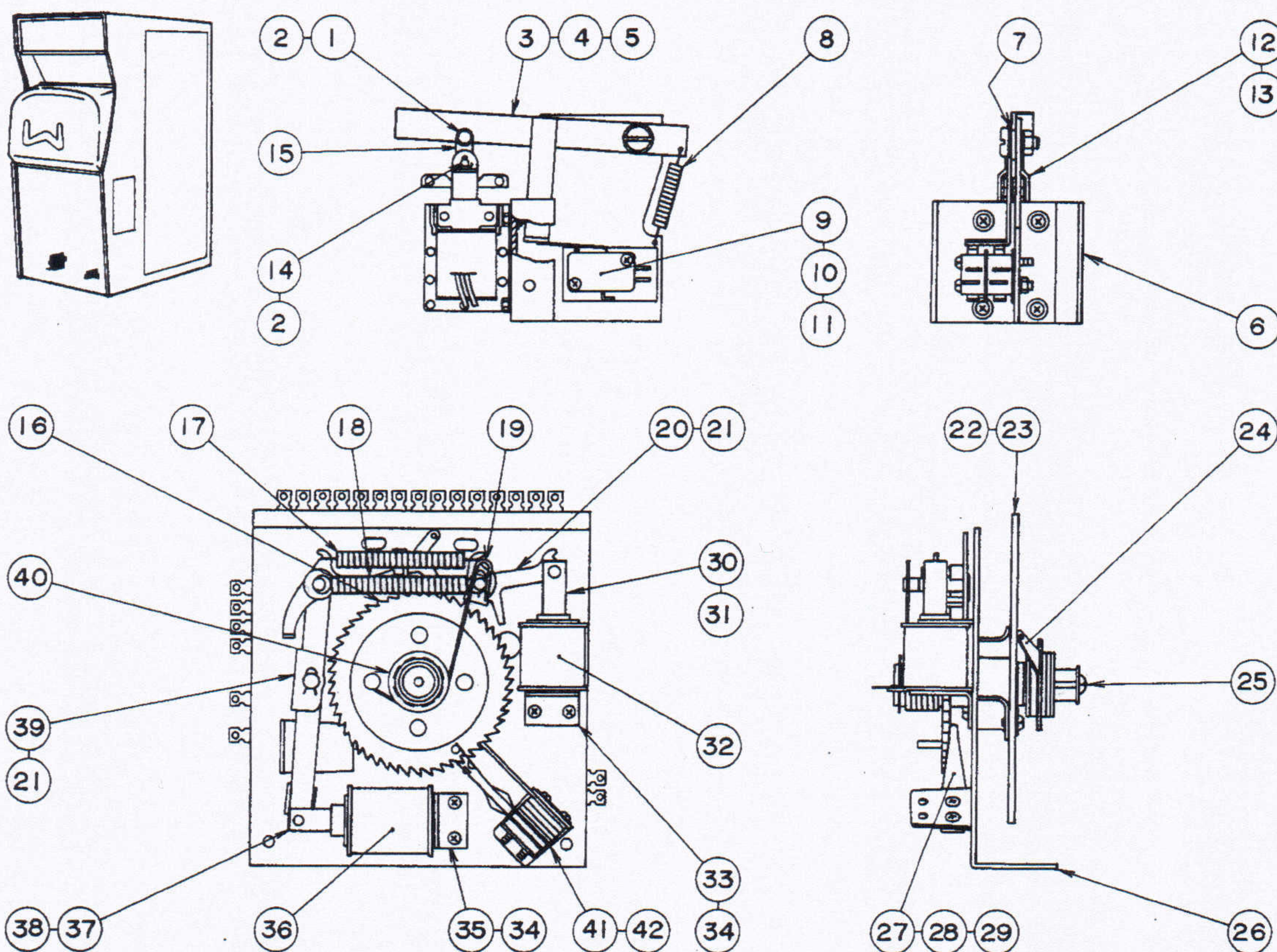
Item	Part No.	Description	Item	Part No.	Description
1	S-91832-3	Terminal, Push In Type, 4P		144-090	Spring Washer M5 (#2)
2	S-91832-2	Plug, Banana Type, 1P	48	S-91877	Transformer, 240V-100V, 400VA, Step Down
3	122-079	Wood Screw, R.H. Phill. 3.1x20	49	S-91361	Terminal Lug
	144-057	Flat Washer M3	50	SH-4022	Cover
4	81001	High Score Adjustment Sheet	51	111-601	M. Screw, P.H. Phill., ISO M5x8
5	S-80030	Staple		111-712	M. Screw, P.H. Phill., ISO M5x20
6	S-90181	Clamp, Cord, Plastic, 8mm I.D.	144-090		Spring Washer M5 (#2)
7	122-086	Wood Screw, R.H. Phill. 3.5x20	133-097		T-Nut, ISO M5
	144-070	Flat Washer M3.5	144-105		Flat Washer M5
8	S-91164	Fuse Holder w/Cover 250V-10A	53	JR-4001	Electric Unit Base
9	S-90639	Fuse, 6A 6.4φx30mm	54	JR-4012	Step Up Unit Ass'y (See Page 16 for Detail)
10	90826	Fuse Holder Ass'y, 2P	55	80908	Sticker, Step-Up Unit
11	90827	Fuse Holder Insulator, 2P	56	111-633	M. Screw, P.H. Phill., ISO M4x18
12	32042	Insulator Washer		133-096	T-Nut, ISO M4
13	S-90645	Fuse, 1A 6.4φx30mm	144-076		Spring Washer M4 (#2)
14	S-91663	Fuse, 1.5A 6.4φx30mm	57	S-90494	Condenser, 0.2μF, 250WV, Tubular
15	S-90661	Fuse, 5A 6.4φx30mm	58	S-91975	Replay Release Relay, AC 50V
16	122-064	Wood Screw, R.H. Phill. 3.1x13	59	80962	Sticker, Replay Release Relay
17	81003	Fuse Instructions	60	S-91582	Safety Relay, DC 48V
18	S-91017	Terminal Plate, 2L 12P	61	81011	Relay Instructions, #2
19	S-91653	Rectifier, Silicon Diode	62	S-91744	Relay, AC 50V
20	S-91451	Resistor, 5 Ohm 1W Wire Wound	63	80499	Sticker, Hold Relay
21	S-92099	Condenser, 47μF, 160WV	64	92071	Relay, AC 50V, 2M.
22	S-92100	Condenser, 100μF, 160WV	65	92067	Relay, AC 50V, 4M. 1B. 1T.
23	S-90184	Clamp, Cord, Plastic, 19mm I.D.	66	80874	Sticker, Notice Instruction
24	81014	Handle		80875	Sticker, Notice Instruction, English
25	133-090	Hex. Nut, ISO M5	67	92101	Relay, AC 50V, 5M.
	144-024	Flat Washer, Special 5.6-19.1x1.2	68	92068	Relay, AC 50V, 3M. 2B. 2T.
	144-090	Spring Washer M5 (#2)	69	92069	Relay, AC 50V, 1M. 4T.
26	S-90182	Clamp, Cord, Plastic, 12.7mm I.D.	70	92070	Relay, AC 50V, 5M. 2B.
27	JR-4016	Rocket Cam Unit Ass'y (See Page 15 for Detail)	71	S-91707	Relay, DC 48V
28	80998	Sticker, Rocket Cam Unit	72	81002	Relay Instructions, #1
29	111-633	M. Screw, P.H. Phill., ISO M4x18	73	S-91587	2-3 Coin Credit Unit, AC 50V
	133-096	T-Nut, ISO M4	74	80912	Sticker, ¥20, ¥30 Credit Unit
	144-078	Flat Washer M4	75	S-90410	Clamp, Cord, Plastic, 10mm I.D.
	144-076	Spring Washer M4 (#2)	76	SC-4014	Connector Bracket, 12P, AMP Type
30	JR-4003	Connector Bracket, 4P, AMP Type	77	S-91981-1	Socket, 12P Brown
31	S-92018-1	Socket, 4P, Natural Color	78	S-92007-1	Socket, 9P, Red
32	S-91978-1	Socket Element	79	S-91980-1	Socket, 12P, Natural Color
33	122-004	Wood Screw, R.H. Phill. 3.5x16	80	S-91984-2	Plug, 15P, Natural Color
34	SC-4015	Connector Bracket, 15P, AMP Type	81	S-91978-2	Pin Element
35	S-91958-1	Socket, 15P, Red			
36	S-91984-1	Socket, 15P, Natural Color			
37	S-91985-1	Socket, 15P, Brown			
38	SC-4013	Connector Bracket, 9P, AMP Type			
39	S-92006-1	Socket, 9P, Natural Color			
40	80580	Sticker, Test Switch			
41	JB-4004	Switch Bracket			
42	S-91206	Switch, Push Button, Baby Type			
43	80425	Sticker, 3A			
44	S-91164	Fuse Holder w/Cover 250V-10A			
45	S-90711	Fuse, 3A 6.4φx30mm			
46	91790X	Power Transformer, 100V-6, 12, 22, 28, 50V			
47	111-712	M. Screw, P.H. Phill., ISO M5x20			
	133-097	T-Nut, ISO M5			
	144-105	Flat Washer M5			



SECTION A-A



Item	Part No.	Description	Item	Part No.	Description	Item	Part No.	Description
1	JR-4034	Sprocket	24	JR-4028	Cam Stop Unit Ass'y (See Page 16 for Detail)	39	111-596	9.5-11.4 rpm M. Screw, P.H. Phill., ISO M4×8
2	144-124	Flat Washer 6.5-19×1.2	25	111-596	M. Screw, P.H. Phill., ISO M4×8		144-167	Lock Washer, Ext. M4
3	JR-4033	Spring Stopper		144-078	Flat Washer M4	40	JR-4038	Ladder Chain, 60 Links
4	SK-4125	Compression Spring		144-167	Lock Washer, Ext. M4	41	JR-4017	Shaft
5	JR-4032	Guide Screw	26	JR-4026	Cam, #2	42	ML-4010X	Clutch Pulley
6	111-643	Set Screw, C.H. Special, ISO M4×8	27	JR-4020	Rocket Cam Unit Bracket, B	43	AT-8103	Leather, Clutch Disc
7	SK-4124	Retainer Nut, Special M14	28	111-596	M. Screw, P.H. Phill., ISO M4×8	44	JR-4035	Clutch Retainer Disc
8	144-053	Flat Washer M6		111-598	M. Screw, P.H. Phill., ISO M4×12			
9	S-90591	Clamp, Cord, Plastic, 5mm I.D.		144-078	Flat Washer M4			
10	S-90181	Clamp, Cord, Plastic, 8mm I.D.		144-167	Lock Washer, Ext. M4			
11	92072	Switch Ass'y, 3M. 1R.	29	JR-4024	Cam Retainer (Cam, #3)			
12	92073	Switch Ass'y, 1M. 1R.	30	SH-4011	Spacer Tube			
13	92074	Switch Ass'y, 1B. 1R.	31	111-709	Set Screw, C.H. Special, ISO M4×10			
14	JR-4021	Rocket Cam Disc Ass'y		133-089	Hex. Nut, ISO M4			
15	AT-6029X	Spacer Odds Link Spring		144-078	Flat Washer M4			
16	111-598	M. Screw, P.H. Phill., ISO M4×12		144-167	Lock Washer, Ext. M4			
	144-078	Flat Washer M4	32	JR-4036	Sprocket for 50Hz Area			
	144-167	Lock Washer, Ext. M4		JR-4037	Sprocket for 60Hz Area			
17	JR-4023	Brush Arm Retainer	33	111-643	Set Screw, C.H. Special, ISO M4×8			
18	111-709	Set Screw, C.H. Special, ISO M4×10	34	JR-4031	Motor Bracket			
19	JR-4025	Cam Stop Disc	35	JR-4018	Pully Plate Ass'y			
20	JR-4027	Cam, #1	36	MP-2033	Guide Pulley			
21	JR-4022	Brush Arm Cam Unit	37	111-596	M. Screw, P.H. Phill., ISO M4×8			
22	111-596	M. Screw, P.H. Phill., ISO M4×8		144-078	Flat Washer M4			
	144-078	Flat Washer M4		144-076	Spring Washer M4 (±2)			
	144-076	Spring Washer M4 (±2)		144-102	E Washer 4mm			
23	JR-4019	Rocket Cam Unit Bracket, A	38	91986	Motor, AC 100V, 50-60Hz,			



Item	Part No.	Description
1	GF-2022	Lever Pin
2	144-057	Flat Washer M3
	155-005	Cotter Pin 0.8×12
3	JR-4030	Cam Stop Lever
4	JB-1021	Shoulder Screw
5	133-090	Hex. Nut, ISO M5
	144-149	Lock Washer, Ext. M5
6	JR-4029	Cam Stop Bracket
7	144-155	Flat Washer, Special 7.2-13×0.23
8	4G-620	Extension Spring
9	S-92028	Switch, Micro Type
10	PS-2049Y	Paper Insulator
11	111-671	M. Screw, P.H. Phill., ISO M3×30
	133-088	Hex. Nut, ISO M3
	144-057	Flat Washer M3
	144-135	Lock Washer, Ext. M3
12	S-91728	Solenoid, AC 100V, 1.4kg
13	111-584	M. Screw, P.H. Phill., ISO M3×8
	111-585	M. Screw, P.H. Phill., ISO M3×10
	133-088	Hex. Nut, ISO M3
	144-057	Flat Washer M3
	144-135	Lock Washer, Ext. M3
14	DH-3315	Plunger Pin
15	GF-3008	Plunger Connection
16	92031	Step-Up Gear, 19 Step
17	91252	Extension Spring
18	91253	Extension Spring
19	91254	Reset Torsion Spring
20	91251	Index Pawl
21	155-036	Hair Clip, Standard

Item	Part No.	Description
		4×12×0.65
22	JR-4013	Step Up Disc Ass'y
23	111-596	M. Screw, P.H. Phill., ISO M4×8
	144-078	Flat Washer M4
24	JR-4014	Wiper Blade Ass'y
25	122-114	Tapping Screw, No. 1 T.H. Phill. 4×15
	144-122	Flat Washer 4.4-16×1.6
26	91798	Base Plate Ass'y
27	91258	Spring Stop
28	91715	Switch End Plate
29	111-583	M. Screw, P.H. Phill., ISO M3×6
	144-135	Lock Washer, Ext. M3
30	91256	Reset Plunger
31	90781	Plunger Ring
32	218C015	Coil, Reset
33	91255	Plunger Stopper Ass'y
34	111-723	M. Screw, P.H. Phill., M3.5×6
	144-166	Lock Washer, Ext. M3.5
35	91255	Plunger Stopper Ass'y
36	219C07	Coil, Step-Up
37	91257	Step-Up Plunger
38	90781	Plunger Ring
39	91250	Step-Up Arm Ass'y
40	144-206	Circular Ext. Ring M18
41	91830	Switch Ass'y, 1B
42	91273	Blade Washer