

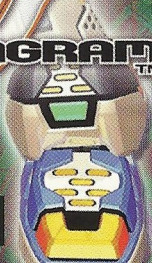


CYBER TROOPERS

電腦戰機巴比倫

**VIRTUAL
ON**

ORATORIO TANGRAM™



SEGA®

ACTIVISION®

TEEN

T

CONTENT RATED BY
ESRB

T-13004N

WARNINGS: Read Before Using Your Sega Dreamcast Video Game System

CAUTION

Anyone who uses the Sega Dreamcast should read the operating manual for the software and console before operating them. A responsible adult should read these manuals together with any minors who will use the Sega Dreamcast before the minor uses it.

HEALTH AND EPILEPSY WARNING

Some small number of people are susceptible to epileptic seizures or loss of consciousness when exposed to certain flashing lights or light patterns that they encounter in everyday life, such as those in certain television images or video games. These seizures or loss of consciousness may occur even if the person has never had an epileptic seizure.

If you or anyone in your family has ever had symptoms related to epilepsy when exposed to flashing lights, consult your doctor prior to using Sega Dreamcast. In all cases, parents should monitor the use of video games by their children. If any player experiences dizziness, blurred vision, eye or muscle twitches, loss of consciousness, disorientation, any involuntary movement or convulsion, **IMMEDIATELY DISCONTINUE USE AND CONSULT YOUR DOCTOR BEFORE RESUMING PLAY.**

To reduce the possibility of such symptoms, the operator must follow these safety precautions at all times when using Sega Dreamcast:

- Sit a minimum of 6.5 feet away from the television screen. This should be as far as the length of the controller cable.
- Do not play if you are tired or have not had much sleep.
- Make sure that the room in which you are playing has all the lights on and is well lit.
- Stop playing video games for at least ten to twenty minutes per hour. This will rest your eyes, neck, arms and fingers so that you can continue comfortably playing the game in the future.

OPERATING PRECAUTIONS

To prevent personal injury, property damage or malfunction:

- Before removing disc, be sure it has stopped spinning.
- The Sega Dreamcast GD-ROM disc is intended for use exclusively on the Sega Dreamcast video game system. Do not use this disc in anything other than a Sega Dreamcast console, especially not in a CD player.
- Do not allow fingerprints or dirt on either side of the disc.
- Avoid bending the disc. Do not touch, smudge or scratch its surface.
- Do not modify or enlarge the center hole of the disc or use a disc that is cracked, modified or repaired with adhesive tape.
- Do not write on or apply anything to either side of the disc.
- Store the disc in its original case and do not expose it to high temperature and humidity.
- Do not leave the disc in direct sunlight or near a radiator or other source of heat.
- Use lens cleaner and a soft dry cloth to clean disc, wiping gently from the center to the edge. Never use chemicals such as benzene and paint thinner to clean disc.

PROJECTION TELEVISION WARNING

Still pictures or images may cause permanent picture tube damage or mark the phosphor of the CRT. Avoid repeated or extended use of video games on large-screen projection televisions.

SEGA DREAMCAST VIDEO GAME USE

This GD-ROM can only be used with the Sega Dreamcast video game system. Do not attempt to play this GD-ROM on any other CD player; doing so may damage the headphones and/or speakers. This game is licensed for home play on the Sega Dreamcast video game system only. Unauthorized copying, reproduction, rental, public performance of this game is a violation of applicable laws. The characters and events portrayed in this game are purely fictional. Any similarity to other persons, living or dead, is purely coincidental.

CYBERTROOPERS VIRTUAL-ON ORATORIO TANGRAM

Thank you for purchasing Cyber Troopers Virtual-On Oratorio Tangram (Virtual-On OT)! Please note that this software is designed only for use with the Sega Dreamcast console. Be sure to read this instruction manual thoroughly before you start playing Virtual-On OT.

C O N T E N T S

STORY	02
STARTING A GAME	03
BASIC CONTROLS	04
ACTION CONTROLS	06
MAIN MENU	11
GAME DISPLAY	12
SINGLE PLAYER MODE (M.S.B.S. VER 5.45)	14
VERSUS	15
TRAINING	17
WATCH	18
REPLAY	19
OPTIONS	21
VIRTUAROID	23
CUSTOMER SUPPORT	27
SOFTWARE LICENSE AGREEMENT	28

The story is shrouded in mystery...

At the beginning of the Virtual Century, Earth, long controlled by warring corporations, was perched on the edge of a new era of technology when the DN Group (Dyna-Tech and Nova Corporation) first discovered the mysterious Moon Gate.

By the year V.C. 96, only Enver IV, the most powerful stockholder in the DN corporation, began to realize the full potential of the Moon Gate. He was put in charge of the 9 manufacturing plants which used the 'psychic energy' that had been collecting deep within the Moon Gate's V-Crystal. The Moon Gate itself later became known as Plant 0.

These Plants drew their power from the Moon Gate's V-Crystal and came to produce the greatest combat vehicles ever known: VIRTUAROIDS!

But stability within the DN Group ended when Enver IV, for reasons known only to himself, sold all 9 plants to rival corporations. In the anarchy that followed, the DN Group was exposed as having withheld valuable and possibly dangerous information relating to the original Moon Gate. Large scale conflicts ensued. Earth's contact with the Moon Gate was lost! And the DNA, the DN Group's newly formed Virtuaroid army, was splintered into two rival factions.

The year is now V.C. a4 and a single Plant—the 9th Plant—has mysteriously vanished with the Tangram. It is believed that the Tangram could possibly control the "laws of casualty," control the Moon Gate itself, and allow certain victory for the army that finds it! You must choose sides as the DNA and RNA continue to fight for control of the nine Virtuaroid Plants.

Choose sides! Find the missing 9th Plant and find the Tangram!!!

GAME OBJECTIVE

Assume control of a Virtuaroid (referred to hereafter as “VR”) and successfully defeat a VR opponent. Your VR opponent will be controlled by either another human player or the Sega Dreamcast CPU. Win by inflicting enough damage to reduce the opponent’s life gauge to zero. If the timer runs out, the VR with the highest life gauge wins.

Saving Files

The following two types of save files may be required to save data with this game:



VOORANTAN.SYS

A system file that requires 4 memory blocks.

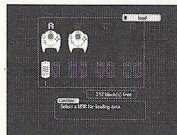


VOORATAN.R00

A replay file that requires between 2 and 130 memory blocks.

Memory Card Selection Screen

This screen appears whenever saving or loading game files. Use **◀▶** to select the memory card in which to load or save data from among the lit memory cards displayed on the screen. Press the **Ⓐ** Button to enter the selection.



BASIC CONTROLS

Virtual-On OT is a one or two player game. The Sega Dreamcast controller can be used to play this game. To play a one-player game, insert the controller into Control Port A or B. For a two-player game, insert the controllers into Control Ports A and B.

SEGA DREAMCAST CONTROLLER

Black Text Menu Selection

White Text Action Controls

ANALOG THUMB PAD

↓ = Special Attack
◀ ▶ = Rotate

DIRECTIONAL BUTTON (D-BUTTON)

Item Selection

VR Maneuvering

↑ = Forward
↓ = Back
◀ = Strafe Left
▶ = Strafe Right

START BUTTON

Game Start
Pause during Game Play

Y BUTTON

Jump

B BUTTON

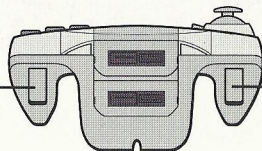
Cancel/Return to the
Previous Screen
Right Turbo Button

A BUTTON

Enter
Crouch/Guard

X BUTTON

Left Turbo Button

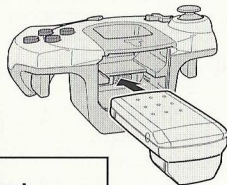


TRIGGER R

Enter
Right Weapon Trigger

TRIGGER L

Enter
Left Weapon Trigger



Soft Reset

For all controllers, to reset the software and return to the title screen at any point during game play, simultaneously press and hold the A, B, X, Y and Start buttons.

Using the Jump Pack™







When using the Jump Pack with the Sega Dreamcast Controller to play Virtual-On OT, always insert the Jump Pack into Expansion Socket 2 of the controller. When the Jump Pack is inserted into Expansion Socket 1 of the Sega Dreamcast Controller, the Jump Pack does not lock into place and may fall out during game play or otherwise inhibit game operation.

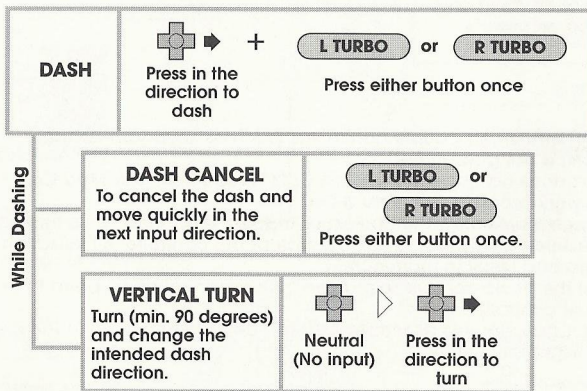
Caution:






- Operation with incompatible controllers (such as keyboard controllers/gun controllers) is not guaranteed.
- Virtual-On does not support the Mad Catz Force Pack. The Mad Catz Force Pack may not work properly with Virtual-On.
- Never touch the Analog Thumb Pad or Triggers **L/R/X/A** while turning the Sega Dreamcast power ON. Doing so may disrupt the controller initialization procedure and result in malfunction.
- Note that the basic controls explained in this manual correspond to the Sega Dreamcast controller.
- The button assignments described in this manual correspond to the default button assignment setting.

ACTION CONTROLS

During game play, these controls are used to operate VR and perform action moves. Refer to the following describing each icon and its corresponding function.

L/R TRIGGER	LEFT/RIGHT WEAPON TRIGGER	L/R TURBO	LEFT/RIGHT TURBO THRUSTER	➔	PRESS IN THE DIRECTION INDICATED
	ANALOG THUMB PAD (CONTROLLER)		CROUCH/GUARD	⇨	TAP IN THE DIRECTION INDICATED
	D-BUTTON (CONTROLLER)		JUMP	+	PRESS SIMULTANEOUSLY
	LEFT TURBO		RIGHT TURBO	or	PRESS EITHER OPTION



While Jumping	JUMP				
	JUMP CANCEL To cancel the jump and land quickly.				
	While at the top of the jump arch. <table border="1"> <tr> <td rowspan="2">DASHING JUMP</td> <td rowspan="2">  Press in the direction to dash </td> <td> L TURBO or R TURBO Press either button once </td> </tr> <tr> <td></td> </tr> </table>		DASHING JUMP	 Press in the direction to dash	L TURBO or R TURBO Press either button once
DASHING JUMP	 Press in the direction to dash	L TURBO or R TURBO Press either button once			

CLOSE-RANGE COMBAT MANEUVERING

QUICK STEP

This movement is used to zoom in quickly on the enemy from the rear when executing a "double lock-on."

L TURBO

or

R TURBO

Just after pressing...



Press in the direction to step.

GUARD

Only for use at close range when not crouching. Ineffective against shooting attacks or crouching attacks. Can be used with turbo shots but will cause the VR to stumble.



Press when "double lock-on" is achieved.

ACTION CONTROLS

ATTACKING CONTROLS

LEFT WEAPON (LW)

While stationary
or walking

L TRIGGER

RIGHT WEAPON (RW)

While stationary
or walking

R TRIGGER

CENTER WEAPON (CW)

While stationary or
walking

L TRIGGER

+

R TRIGGER

JUMP ATTACK

Input while
jumping

L TRIGGER

or

or

+

L TRIGGER

R TRIGGER

R TRIGGER

CROUCH ATTACK

Input while
crouching

L TRIGGER

or

or

+

L TRIGGER

R TRIGGER

R TRIGGER

SLIDING SHOT

Input while
dashing



or



+

L TRIGGER

or

or

+

L TRIGGER

R TRIGGER

R TRIGGER

DASH ATTACK

Input while
dashing

L TRIGGER

or

or

+

L TRIGGER

R TRIGGER

R TRIGGER

AERIAL DASH ATTACK

Input during an
aerial dash

L TRIGGER

or

or

+

L TRIGGER

R TRIGGER

R TRIGGER

TURBO SHOT ATTACK

A variety of attacks are possible with different turbo button and trigger combinations. As the effect produced by each shot varies, it is important to plan the attack according to the situation.

ACTION CONTROLS

RIGHT TURBO SHOT	R TURBO	+	or	R TURBO	+	or	R TURBO	+	L TRIGGER
	L TRIGGER			R TRIGGER					R TRIGGER

LEFT TURBO SHOT	L TURBO	+	or	L TURBO	+	or	L TURBO	+	L TRIGGER
	L TRIGGER			R TRIGGER					R TRIGGER

SPECIAL TURBO SHOT (SPECINEFF ONLY)

L TURBO		L TRIGGER
+	+	+
R TURBO		R TRIGGER

CLOSE RANGE COMBAT ATTACKING

CONVENTIONAL CLOSE-RANGE ATTACK

Double lock-on to the enemy and when the weapons gauge turns yellow, press the trigger. Possible while stationary or when walking.

L TRIGGER	or	L TRIGGER
	or	+
R TRIGGER		R TRIGGER

CROUCHING CLOSE-RANGE ATTACK

Double lock-on to the enemy and when the weapons gauge turns yellow, simultaneously press the crouch button and the trigger. Inflicts damage even when the enemy is guarding.

L TRIGGER	or	L TRIGGER
	or	+
R TRIGGER		R TRIGGER

ACTION CONTROLS

CLOSE RANGE COMBAT ATTACKING

TURBO CLOSE-RANGE ATTACK

Double lock-on to the enemy and when the weapons gauge turns yellow, simultaneously press the **right turbo button** and the trigger. Inflicts damage even when the enemy is guarding.

L TRIGGER

or

or

+

R TRIGGER

L TRIGGER

R TRIGGER

SMALL JUMP CLOSE-RANGE ATTACK

Double lock-on to the enemy and once the weapons gauge turns yellow, simultaneously press the **jump button** and the trigger.

L TRIGGER

or

or

+

R TRIGGER

L TRIGGER

R TRIGGER

DOWN CLOSE-RANGE ATTACK

To attack a downed (knocked out) enemy at close range, press the trigger once the weapons gauge turns green.

L TRIGGER

or

R TRIGGER

GUARD REVERSAL ATTACK

By pressing the trigger while **guarding** it is possible to execute a faster attack than normal.

L TRIGGER

or

R TRIGGER

FORWARD DASH CLOSE-RANGE ATTACK

Execute during a forward or diagonal forward dash. Possible even when not double locked-on to the enemy.



During a
forward dash

+

L TRIGGER

or

or

R TRIGGER

L TRIGGER

+

R TRIGGER

ACTION CONTROLS

QUICK STEP CLOSE-RANGE ATTACK

Double lock-on to the enemy and simultaneously quick step left or right (tap the D-Button) and press the trigger.



Tap in the direction
to step

+

L TRIGGER

or

R TRIGGER

SPECIAL BUTTON

Press the controller Analog Thumb Pad  to execute a special attack through button combinations. The type of attack varies with each VR.



SPECIAL BUTTON

MAIN MENU

Once the title screen appears, press Start to display the Main menu.

Use the D-Button for menu item selection and the **A** Button to enter your selection.



GAME DISPLAY

LIFE GAUGE

REMAINING TIME

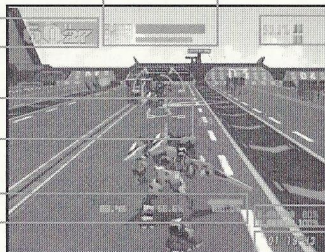
BATTLE SETS ACQUIRED

WEAPONS SIGHT

WEAPONS GAUGES

V ARMOR

TOTAL TIME



The lock-on appears in the screen center whenever the weapon's sight is aligned over the enemy VR. Firing the weapon fired after lock-on is achieved will cause the shot to home in on the enemy VR.

REMAINING TIME

The time remaining for the current battle set. Once this number reaches 00'00, the battle set ends.

LIFE GAUGE

This gauge will decrease whenever damage is incurred. Once it reaches zero, the VR loses. In a one-player battle, the top gauge represents the player and the bottom gauge the enemy.

BATTLE SETS ACQUIRED

Displays the number of battle sets acquired by each player.

WEAPONS SIGHT

Align this sight over the enemy VR to achieve lock-on.

WEAPONS GAUGES

These gauges show the energy level of each weapon. From left to right: LW (Left Weapon), CW (Center Weapon – both triggers) and RW (Right Weapon). As each weapon is used, its power level will decrease. When the gauge turns red, that weapon can no longer be used. The power level of weapons will replenish naturally over time.

TOTAL TIME

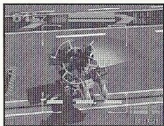
The total elapsed time since Mission 1 play was started.

V ARMOR

This percentage indicates the strength value at which a VR can deflect enemy attack. In a one-player battle, the top value represents the player and the bottom value the enemy. The higher this value is, the more likely a weak attack can be deflected. It is recommended to use a strong attack, such as a turbo attack, to weaken your opponents V armor (reduce this percentage) before proceeding with normal attacks.

Close-Range Combat Display

Whenever the VR engage in close range combat, the lock-on sight will double in size and the color of the weapons gauges will change to yellow. This is called "Close Range Combat Mode." To execute a close-range attack, press the trigger that corresponds to the yellow weapons gauge.



Double Lock-On Sight

The lock-on sight will change into a "double lock-on sight" to indicate when the VR is near enough to the enemy to execute a close range attack.

SINGLE PLAYER MODE [M.S.B.S.VER.5.45]

Battle against a succession of CPU-controlled VR in this one-player game mode.

CONTINUE/GAME OVER

Whenever you lose a battle against an enemy VR, the CONTINUE screen is displayed. To re-play the battle against the same VR, press the Start button before the countdown reaches 0. If the countdown reaches 0, the game is over and the title screen will be displayed.



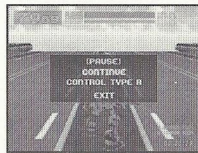
JOINING IN

A challenger can join into the game play at any time by pressing Start on the second controller. The VR Selection screen will appear for each player to select a VR, stage, etc. For details, refer to the VERSUS mode explanation on page 15.



PAUSE MENU

Press Start during game play to display the pause screen. Use the D-Button $\blacktriangle/\blacktriangledown$ to select an item and press the \triangle button to enter your selection. It is possible to change the controller setting here using the D-Button $\blacktriangle/\blacktriangleright$.



CONTINUE

Select to continue the currently paused game.

CONTROL TYPE

Select from among types A through F to change the controller setting.

EXIT

Select to quit the currently paused game and return to the Main menu.

- Pressing down **X** + **Y** while the Pause Menu is up will remove the menu options box for a better view of the action. However, be careful not to exit your game, as menu items will still be selectable. Release the **X** + **Y** buttons and the menu will reappear.

SAVING REPLAY DATA

In both the SINGLE PLAYER MODE (M.S.B.S VER. 5.45) and VERSUS modes, mission replay data can be saved to a memory card. During the replay segment that appears when a mission ends, press triggers **R** + **L** to display the Save screen depicted to the right. Select a memory card on which to save data* from among the displayed options using the same procedure as explained in Memory Card Selection Screen on page 3. Press **B** to cancel and return to game play. For details about how to view replay data saved to a memory card, see page 20.



*Saving replay data requires between 2 and 130 free memory blocks.

VERSUS

This is a two-player battle mode.

VR SELECTION SCREEN

Use the D-Button to select a Virtuaroid and press the **A** button. Next, enter the VR handicap percentage and controller type. Select the Start option to proceed to the stage selection screen.

Note that if the countdown reaches zero before selection is complete, the currently selected items will automatically be entered.



HANDICAP

As a handicap, the life gauge of the VR can be set between a range of 10 and 200%.

CONTROL TYPE

Select from among types A through F to change the controller setting.

START / EXIT

Start the game or exit and return to the Main menu.

STAGE SELECTION SCREEN

When selecting a stage on which to battle, use the ◀▶ to toggle through the available stages and press the A Button to enter a selection. Select RANDOM SELECT to have the CPU automatically choose from among the 15 available stages.



RESULTS SCREEN

Once the battle is complete, the Results screen is displayed. Use the D-Button and A button to select and enter one of the options listed at the bottom of the screen.

RETRY WITH THE SAME VIRTUAROID

Restart the battle with both players using the same VR.

CHANGE THE VIRTUAROID

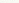
If either player selects this item, the VR Selection screen will be displayed.

EXIT

If either player selects this item, the title screen will be displayed.

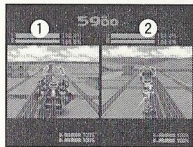


PAUSE MENU

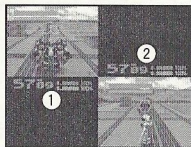
At anytime during game play, either player can press the Start button to pause the battle and display the Pause menu. Use the D-Pad to select an item and press the Start button to resume. To change the positioning of the split screen, select the menu item under Continue (Normal 1) and  to change the setting.

Versus Mode Screen Types:

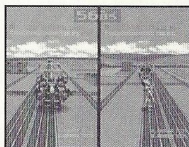
- ① : Player one's screen (Player 1)
② : Player two's screen (Player 2)



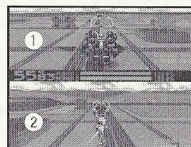
NORMAL 1



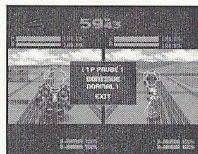
NORMAL 2



VERTICAL



HORIZONTAL

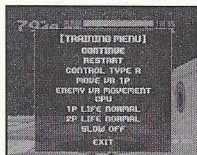


TRAINING

In this mode you can practice controlling a VR against an immobile enemy or in a state of invincibility.

VR SELECTION/STAGE SELECTION

Using the same procedure as described for the versus mode, select a VR (first your own and then the enemy VR), the controller type, and stage.



TRAINING MENU

During game play, press the Start button to display the Training menu to modify the settings of the training mode. Use $\uparrow\downarrow$ to select a menu item and $\leftarrow\rightarrow$ to modify the item. Press \triangle to enter. Select EXIT and press \triangle to end the battle and return to the VR selection screen.



CONTINUE

Resume the current battle.

RESTART

Quit the current battle and restart using the same settings.

CONTROL TYPE

Select from among types A through F to change the controller setting.

MOVE VR

Select which of the controllers connected to Controller Port A, etc. to use as player one or the enemy.

ENEMY VR MOVEMENT

Select a setting for the enemy from the following options; CPU-controlled, CPU-controlled with no shooting, Controller Port B controller setting, or no movement.

1P LIFE

Set the life gauge setting for player one to NORMAL or UNLIMITED.

2P LIFE

Set the life gauge setting for player two to NORMAL or UNLIMITED.

SLOW

When set to ON, the game speed will become slow.

WATCH

In this mode you can watch a CPU vs. CPU battle from a variety of camera angles.

CONTINUE

Resume the current battle.

EXIT

Quit the current battle and restart using the same settings.

CAMERA CONTROLS

Use the following controls to change the camera angles for viewing the battle.

-  **Game display.** Press  again to change to 1 or 2 player.
-  **Live monitor.** The camera angle may change depending on the situation.
-  The camera angle will toggle as follows when the button is pressed.

ROTATION 1P/2P

A rotating angle around player one and player two

VR EYE CAMERA 1P/2P

A first person camera angle from one/two player's perspective

REAR CAMERA 1P/2P


A rear view from the back of player one/player two

LOOK DOWN CAMERA

A downward view from overhead

FIXED CAMERA NO.1/2/3

A view from the fixed camera 1/2/3 over the stage

-  Press Y the then use the Analog Thumb Pad, D-Button to move the camera to the center of player one.

ANALOG THUMB PAD

Rotate the camera horizontally upwards

D-BUTTON

Zoom the camera in or out

ANALOG THUMB PAD/D-BUTTON

Rotate the camera left/right

REPLAY

Replay the last battle or replay file data saved to a VMU from a variety of camera angles.

REPLAY FILE SELECTION

Use the D-Button to select a replay file and press  to enter.

LAST GAME

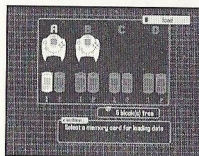
View a replay of the last Single Player or Versus battle played.

SAVE DATA

Select a file from the inserted VMU. Select to display the VMU Selection screen.

VMU SELECTION SCREEN

Select a VMU to load using the same procedure for memory card selection as described on page 3. If there are replay files saved to the selected memory card, a replay file list will be displayed. Use **↑****↓** to select a file and press **A** to enter. The selected battle will be replayed.



CAMERA CONTROLS

Use these controls to change the camera angles for viewing the battle. The controls are the same as described for the Watch mode on page 18.

Here you can modify various game settings or listen to the game sounds. Use **↑↓** to select an item and press **△** to enter.

GAME SETTINGS

Select **GAME SETTINGS** to modify the game play. Use **↑↓** to select a menu item and **←→** to modify. Select **EXIT** and press **△** to exit the game settings.



GAME DIFFICULTY

Modify the difficulty level of the game.

PLAY TIME (1P)

Set the Battle time for one-player mode.

MATCH COUNT (1P)

Set the number of rounds for one battle in the one-player mode.

PLAY TIME (VS)

Set the amount of Battle time for Versus mode.

MATCH COUNT (VS)

Set the number of rounds for one battle in the Versus mode.

COMPANY SELECT

Select the VR colors for the one player side.

SURVIVAL MODE

Set to ON to disable life regeneration during battles.
Note: Match Count for (1P) and (2P) default to one round when survival mode is set to ON.

INFIGHT MODE

Set to ON to prevent all attacks other than close-range. A.I. opponents can always perform long range attacks, even with Infight Mode set to ON.

FOG MODE

Set to ON to introduce fog to the stage and reduce visibility.

QUICK SELECT

Set to ON to enable the simplified VR selection screen.

QUICK CONTINUE

Set to ON to enable quick continue (omitting the VR selection).

DEVICE SETTING

Select **DEVICE SETTINGS** to change the controller button assignment settings. Use **▲▼** to select and **◀▶** to modify. Select **EXIT** and press **A** to exit the game settings.

CONTROL TYPE

Change the controller button assignment settings by selecting a controller type.

VIBRATION

Set **ON** to activate usage of a Jump Pack (sold separately).

AV SETTINGS

Here you can modify the sound output, adjust the position of the game display, conduct sound tests, etc. Use **▲▼** to select and **◀▶** to modify. Select **EXIT** and press **A** to exit the game settings.

AUDIO

Set the sound output.

BGM VOLUME

Adjust the BGM (background music) volume.

SE VOLUME

Adjust the SE (sound effects) volume.

BGM TEST

Listen to the background music. Use **◀▶** to select and press **A** to playback.

SE TEST

Listen to the sound effects. Use **◀▶** to select and press **A** to playback.

MONITOR TEST

Display the color bar. Press the Start button to end.

OPTIONS

SCREEN ADJUST

Use the D-Button to adjust the position of the game display.

SAVE

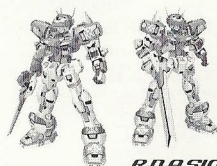
Save the modified options settings to the VMU.

➡ **Saving the options settings requires 4 free memory blocks.**

LOAD

Load previously saved options settings from a VMU.

MBU-707-G TEMJIN



D.N.A.SIDE

R.N.A.SIDE

BASIC WEAPONS	LW	POWER BOMB	CW	SWORD	RW	LONG LAUNCHER
MAIN ATTACK MOVE	R TRIGGER DURING FORWARD			DASH R TURBO & R TRIGGER		
SPECIAL ATTACK	PRESS BOTH TRIGGERS DURING AN AERIAL FORWARD DASH (ONLY POSSIBLE WHEN ALL WEAPON GAUGES ARE AT 100% POWER)					
SPECIAL ATTACK 2	PRESS BOTH TRIGGERS WHILE ROTATING (ONLY POSSIBLE WHEN BOTH TRIGGER WEAPON GAUGES ARE AT 100% POWER)					

HBV-502-Hs / RVR-75 RAIDEN

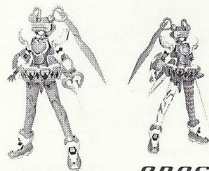


R.N.A.SIDE

D.N.A.SIDE

BASIC WEAPONS	LW	GROUND NAPALM	CW	LASER	RW	HYPER BAZOOKA
MAIN ATTACK MOVE	L TURBO & BOTH TRIGGERS					
SPECIAL ATTACK	PRESS THE SPECIAL BUTTON IN MID-JUMP					

RVR-14 Fei-Yen Yin



D.N.A.SIDE

R.N.A.SIDE

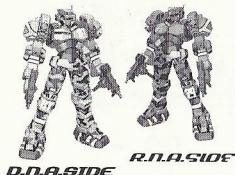
BASIC WEAPONS	LW	SWORD	CW	BEAM IRRADIATOR	RW	HAND BEAM
MAIN ATTACK MOVE	R TURBO & R TRIGGER					
SPECIAL ATTACK	AUTOMATICALLY ACTIVATES WHEN LIFE GAUGE POWER DROPS BELOW 50%					
SPECIAL ATTACK 2	PRESS THE SPECIAL BUTTON					

RUR-42 CYPHER



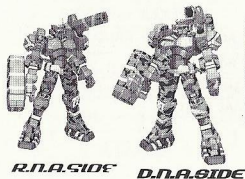
BASIC WEAPONS	LW	DAGGER	CW	BEAM LAUNCHER	RW	MULTI-LAUNCHER
MAIN ATTACK MOVE	R TURBO & R TRIGGER			L TURBO & BOTH TRIGGERS		
SPECIAL ATTACK	PRESS BOTH TRIGGERS DURING AN AERIAL FORWARD DASH (ONLY POSSIBLE WHEN ALL WEAPON GAUGES ARE AT 100% POWER)					

RUR-79 APHARMO B



BASIC WEAPONS	LW	GRENADE DISCHARGER	CW	BEAM TONGFER	RW	SUB-MACHINE GUN
MAIN ATTACK MOVE	L TRIGGER DURING A FORWARD DASH			L TURBO & BOTH TRIGGERS		
SPECIAL ATTACK	PRESS BOTH TRIGGERS DURING A DOUBLE LEVEL JUMP (ONLY POSSIBLE ONCE PER PLAY)					
SPECIAL ATTACK 2	PRESS BOTH TRIGGERS DURING AN AERIAL DASH (ONLY POSSIBLE WHEN THE CW IS AT 100% POWER)					

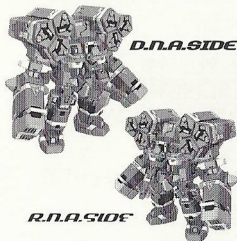
RUR-79 APHARMO S



BASIC WEAPONS	LW	GRENADE LAUNCHER	CW	ROCKET LAUNCHER	RW	FUNNY LAUNCHER
MAIN ATTACK MOVE	R TURBO & BOTH TRIGGERS			L TURBO & L TRIGGER		
SPECIAL ATTACK	PRESS BOTH TRIGGERS DURING A DOUBLE LEVEL JUMP (ONLY POSSIBLE ONCE PER PLAY)					
SPECIAL ATTACK 2	PRESS BOTH TRIGGERS DURING AN AERIAL DASH					

9AV-326-D/9 GRY5-VOK

D.N.A.SIDE

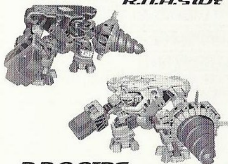


R.N.A.SIDE

BASIC WEAPONS	LW	OVERHEAD LAUNCHER	CW	SHOULDER LAUNCHER	RW	MISSILE LAUNCHER
MAIN ATTACK MOVE	R TURBO & BOTH TRIGGERS			R TURBO & BOTH TRIGGERS MIDJUMP		
SPECIAL ATTACK	PRESS THE SPECIAL BUTTON WHILE CROUCHING					

RUR-68 DORDRAY

R.N.A.SIDE

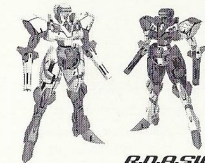


D.N.A.SIDE

BASIC WEAPONS	LW	DRILL	CW	V HURRICANE	RW	CLAW LAUNCHER
MAIN ATTACK MOVE	R TURBO & R TRIGGER			L TRIGGER DURING FORWARD DASH		
SPECIAL ATTACK	PRESS THE SPECIAL BUTTON WHILE STATIONARY					
SPECIAL ATTACK 2	PRESS BOTH TRIGGERS WHILE ROTATING TO THE RIGHT (ONLY POSSIBLE WHEN THE CW IS AT 100% POWER)					

XBV-819-TR4 BAL-BADOS

R.N.A.SIDE



D.N.A.SIDE

BASIC WEAPONS	LW	THIGH LAUNCHER	CW	BEAM LAUNCHER	RW	HAND LAUNCHER
MAIN ATTACK MOVE	L TURBO & BOTH TRIGGERS					
SPECIAL ATTACK	R TURBO & BOTH TRIGGERS DURING MID-JUMP TO ERL INDEPENDENT FIRING OF ALL 4 (BOTH ARMS, BOTH LEGS) WEAPONS AT ONCE					
SPECIAL ATTACK 2	ERL FIRING OF 4 WEAPONS, R TURBO & BOTH TRIGGERS					

SGV-417-1 ANGELAN

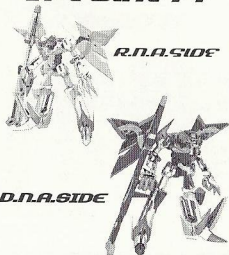


R.N.A. SIDE

D.N.A. SIDE

BASIC WEAPONS	LW	HAND SHOT	CW	CRYSTAL BIT	RW	ROD SHOT
MAIN ATTACK MOVE	R TURBO & BOTH TRIGGERS			L TURBO & L TRIGGER		
SPECIAL ATTACK	WHEN STATIONARY, CROUCH AND PRESS THE SPECIAL BUTTON					

RUR-87 SPECINEFF



R.N.A. SIDE

D.N.A. SIDE

BASIC WEAPONS	LW	SCYTHE	CW	BOOMERANG	RW	LONG LAUNCHER
MAIN ATTACK MOVE	R TURBO & BOTH TRIGGERS			L TURBO & L TRIGGER		
SPECIAL ATTACK	PRESS BOTH TURBOS & BOTH TRIGGERS					
SPECIAL ATTACK 2	PRESS L TRIGGER WHILE ROTATING					
SPECIAL ATTACK 3	WHEN THE V ARMOR GAUGE IS LOWER THAN THE ENEMY'S, PRESS THE SPECIAL BUTTON TWICE					

CVT-001 AJIM



R.N.A. SIDE

D.N.A. SIDE

BASIC WEAPONS	LW	LEFT FIST	CW	BIG CORE	RW	RIGHT FIST
MAIN ATTACK MOVE	?			?		
SPECIAL ATTACK	?					

CUSTOMER SUPPORT

ONLINE SUPPORT

Internet: support@activision.com or <http://www.activision.com>

OTHER CONTACT METHODS

Fax (310) 255-2151

Mail Activision, Customer Support,
P.O. Box 67713, Los Angeles, CA 90067

Phone Call our 24-hour voice-mail system for answers to our most frequently asked questions at (310) 255-2050. Or contact a customer service representative at the same number between the hours of 9:00 a.m. and 5:00 p.m (Pacific Time) Monday through Friday, except holidays.

Proof of Purchase

Virtual-On: Oratorio Tangram

ISBN 1-58416-098-5



SOFTWARE LICENSE AGREEMENT

IMPORTANT - READ CAREFULLY: USE OF THIS PROGRAM IS SUBJECT TO THE SOFTWARE LICENSE TERMS SET FORTH BELOW. "PROGRAM" INCLUDES THE SOFTWARE INCLUDED WITH THIS AGREEMENT, THE ASSOCIATED MEDIA, ANY PRINTED MATERIALS, AND ANY ON-LINE OR ELECTRONIC DOCUMENTATION, AND ANY AND ALL COPIES AND DERIVATIVE WORKS OF SUCH SOFTWARE AND MATERIALS. BY OPENING THIS PACKAGE, AND/OR USING THE PROGRAM, YOU ACCEPT THE TERMS OF THIS LICENSE WITH ACTIVISION, INC. ("ACTIVISION").

LIMITED USE LICENSE. Activision grants you the non-exclusive, non-transferable, limited right and license to use one copy of this Program solely and exclusively for your personal use. All rights not specifically granted under this Agreement are reserved by Activision. This Program is licensed, not sold. Your license confers no title or ownership in this Program and should not be construed as a sale of any rights in this Program.

OWNERSHIP. All title, ownership rights and intellectual property rights in and to this Program and any and all copies thereof (including but not limited to any titles, computer code, themes, objects, characters, character names, stories, dialog, catch phrases, locations, concepts, artwork, animation, sounds, musical compositions, audio-visual effects, methods of operation, moral rights, and any related documentation, incorporated into this Program) are owned by Activision or its licensors. This Program is protected by the copyright laws of the United States, international copyright treaties and conventions and other laws. This Program contains certain licensed materials and Activision's licensors may protect their rights in the event of any violation of this Agreement.

YOU SHALL NOT:

- Exploit this Program or any of its parts commercially, including but not limited to use at a cyber cafe, computer gaming center or any other location-based site. Activision may offer a separate Site License Agreement to permit you to make this Program available for commercial use; see the contact information below.
- Sell, rent, lease, license, distribute or otherwise transfer this Program, or any copies of this Program, without the express prior written consent of Activision.
- Reverse engineer, derive source code, modify, decompile, disassemble, or create derivative works of this Program, in whole or in part.
- Remove, disable or circumvent any proprietary notices or labels contained on or within the Program.
- Export or re-export this Program or any copy or adaptation in violation of any applicable laws or regulations.

LIMITED WARRANTY. Activision warrants to the original consumer purchaser of this Program that the recording medium on which the Program is recorded will be free from defects in material and workmanship for 90 days from the date of purchase. If the recording medium is found defective within 90 days of original purchase, Activision agrees to replace, free of charge, any product discovered to be defective within such period upon its receipt of the Product, postage paid, with proof of the date of purchase, as long as the Program is still being manufactured by Activision. In the event that the Program is no longer available, Activision retains the right to substitute a similar program of equal or greater value. This warranty is limited to the recording medium containing the Program as originally provided by Activision and is not applicable to normal wear and tear. This warranty shall not be applicable and shall be void if the defect has arisen through abuse, mistreatment, or neglect. Any implied warranties prescribed by statute are expressly limited to the 90-day period described above.

EXCEPT AS SET FORTH ABOVE, THIS WARRANTY IS IN LIEU OF ALL OTHER WARRANTIES, WHETHER ORAL OR WRITTEN, EXPRESS OR IMPLIED, INCLUDING ANY WARRANTY OF MERCHANTABILITY, FITNESS FOR A PARTICULAR PURPOSE OR NON-INFRINGEMENT, AND NO OTHER REPRESENTATIONS OR CLAIMS OF ANY KIND SHALL BE BINDING ON OR OBLIGATE ACTIVISION.

When returning the Program for warranty replacement please send the original product disks only in protective packaging and include: (1) a photocopy of your dated sales receipt; (2) your name and return address typed or clearly printed; (3) a brief note describing the defect, the problem(s) you are encountering and the system on which you are running the Program; (4) if you are returning the Program after the 90-day warranty period, but within one year after the date of purchase, please include check or money order for \$15 U.S. currency per CD or floppy disk replacement. Note: Certified mail recommended.

In the U.S. send to: Warranty Replacements, Activision, Inc., P.O. Box 67713, Los Angeles, California 90067

LIMITATION ON DAMAGES. IN NO EVENT WILL ACTIVISION BE LIABLE FOR SPECIAL, INCIDENTAL OR CONSEQUENTIAL DAMAGES RESULTING FROM POSSESSION, USE OR MALFUNCTION OF THE PROGRAM, INCLUDING DAMAGES TO PROPERTY, LOSS OF GOODWILL, COMPUTER FAILURE OR MALFUNCTION AND, TO THE EXTENT PERMITTED BY LAW, DAMAGES FOR PERSONAL INJURIES, EVEN IF ACTIVISION HAS BEEN ADVISED OF THE POSSIBILITY OF SUCH DAMAGES. ACTIVISION'S LIABILITY SHALL NOT EXCEED THE ACTUAL PRICE PAID FOR THE LICENSE TO USE THIS PROGRAM. SOME STATES/COUNTRIES DO NOT ALLOW LIMITATIONS ON HOW LONG AN IMPLIED WARRANTY LASTS AND/OR THE EXCLUSION OR LIMITATION OF INCIDENTAL OR CONSEQUENTIAL DAMAGES, SO THE ABOVE LIMITATIONS AND/OR EXCLUSION OR LIMITATION OF LIABILITY MAY NOT APPLY TO YOU. THIS WARRANTY GIVES YOU SPECIFIC LEGAL RIGHTS, AND YOU MAY HAVE OTHER RIGHTS WHICH VARY FROM JURISDICTION TO JURISDICTION.

TERMINATION. Without prejudice to any other rights of Activision, this Agreement will terminate automatically if you fail to comply with its terms and conditions. In such event, you must destroy all copies of this Program and all of its component parts.

U.S. GOVERNMENT RESTRICTED RIGHTS. The Program and documentation have been developed entirely at private expense and are provided as "Commercial Computer Software" or "restricted computer software." Use, duplication or disclosure by the U.S. Government or a U.S. Government subcontractor is subject to the restrictions set forth in subparagraph (c)(1)(ii) of the Rights in Technical Data and Computer Software clauses in DFARS 252.227-7013 or as set forth in subparagraph (c)(1) and (2) of the Commercial Computer Software Restricted Rights clauses at FAR 52.227-19, as applicable. The Contractor/Manufacturer is Activision, Inc., 3100 Ocean Park Boulevard, Santa Monica, California 90405.

INJUNCTION. Because Activision would be irreparably damaged if the terms of this Agreement were not specifically enforced, you agree that Activision shall be entitled, without bond, other security or proof of damages, to appropriate equitable remedies with respect to breaches of this Agreement, in addition to such other remedies as Activision may otherwise have under applicable laws.

INDEMNITY. You agree to indemnify, defend and hold Activision, its partners, affiliates, contractors, officers, directors, employees and agents harmless from all damages, losses and expenses arising directly or indirectly from your acts and omissions to act in using the Product pursuant to the terms of this Agreement.

MISCELLANEOUS. This Agreement represents the complete agreement concerning this license between the parties and supersedes all prior agreements and representations between them. It may be amended only by a writing executed by both parties. If any provision of this Agreement is held to be unenforceable for any reason, such provision shall be reformed only to the extent necessary to make it enforceable and the remaining provisions of this Agreement shall not be affected. This Agreement shall be construed under California law as such law is applied to agreements between California residents entered into and to be performed within California, except as governed by federal law and you consent to the exclusive jurisdiction of the state and federal courts in Los Angeles, California.

If you have any questions concerning this license, you may contact Activision at 3100 Ocean Park Boulevard, Santa Monica, California 90405, (310) 255-2000, Attn. Business and Legal Affairs, legal@activision.com.

ESRB RATING

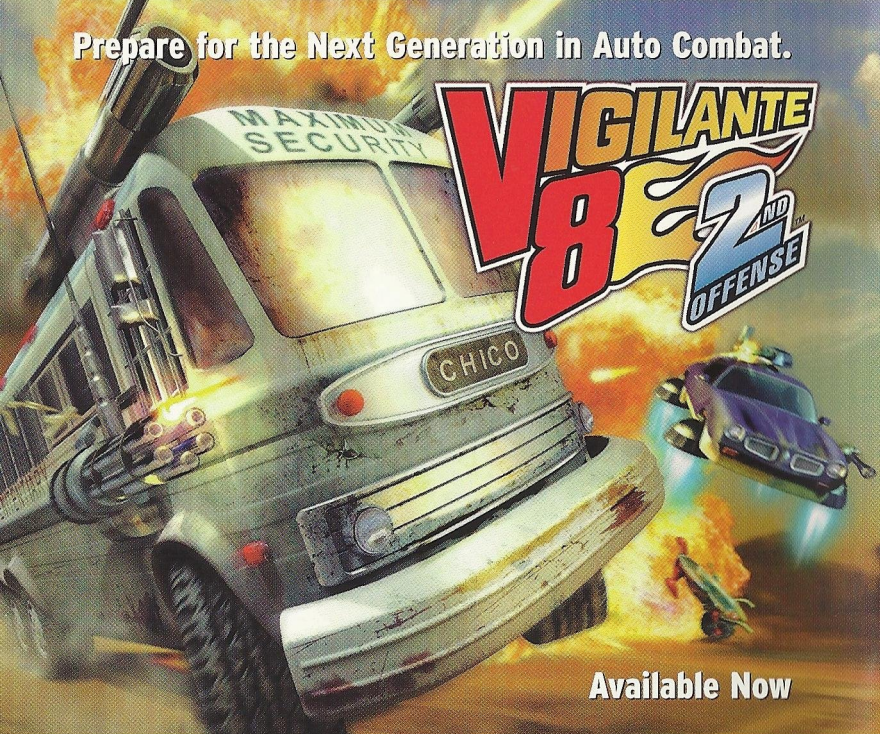
This product has been rated by the Entertainment Software Rating Board. For information about the ESRB rating, or to comment about the appropriateness of the rating, please contact the ESRB at 1-800-771-3772

Sega is registered in the US Patent and Trademark Office. Sega Dreamcast, the Dreamcast Swirl, are trademarks of SEGA. Sega of America, P.O. Box 7639, San Francisco, CA 94120. All Rights Reserved. Programmed in Japan. Made and printed in the USA. WARNING: Operates only with NTSC televisions and Sega Dreamcast systems purchased in North and South America (except Argentina, Paraguay and Uruguay). Will not operate with any other televisions or Sega Dreamcast systems. Product covered under one or more of the following U.S. Patents: 5,460,374; 5,325,770; 5,627,895; 5,688,173; 4,442,486; 4,454,594; 4,462,076. Re. 35,839. Japanese Patent No.2879538, (Patents pending in U.S. and other countries); Canada Patent No. 1,163,276. The ratings icon is a trademark of the Interactive Digital Software Association.

SEGA®

Prepare for the Next Generation in Auto Combat.

VIGILANTE 8 2ND OFFENSE



Available Now

www.activision.com

ACTIVISION

Luxoflux

Activision, Inc. P.O. Box 67713, Los Angeles, CA 90067

Activision is a registered trademark and Vigilante 8 and Vigilante 8: 2nd Offense are trademarks of Activision, Inc. © 1998, 1999 Activision, Inc. Luxoflux is a trademark of Luxoflux Corp. All rights reserved.

Virtual-On: Dragoon, Virtual-On: Dragoon 2, and Virtual-On: Dragoon 2+ are trademarks of Sega Enterprises, Ltd. All rights reserved. Virtual-On: Dragoon 2+ is a registered trademark of Sega Enterprises, Ltd. This game is licensed for use on the Sega Dreamcast System only. Published and distributed by Activision, Inc. All rights reserved. All other trademarks and trade names are properties of their respective owners.

Sega is registered in the U.S. Patent and Trademark Office. Sega Dreamcast, the Dreamcast Swirl, are trademarks of SEGA. Sega of America, P.O. Box 7639, San Francisco, CA 94120. All Rights Reserved. Programmed in Japan. Made and printed in the USA. WARNING: Operates only with NTS-G televisions and Sega Dreamcast systems purchased in North and South America (except Argentina, Paraguay and Uruguay). Will not operate with any other televisions or Sega Dreamcast systems. Product covered under one or more of the following U.S. Patents: 5,460,374; 5,525,770; 5,627,895; 5,688,173; 4,442,485; 4,454,584; 4,462,076; Re. 35,839. Japanese Patent No. 2870538. Patents pending in U.S. and other countries; Canada Patent No. 1,183,276. The ratings icon is a trademark of the Interactive Digital Software Association.



1002227.221.US

SEGA